

Lidded Coffee Table with Storage Compartments

Do It Yourself Storage Ideas 2015, page 24



HOW TO BUILD A LIDDED COFFEE TABLE WITH STORAGE COMPARTMENTS

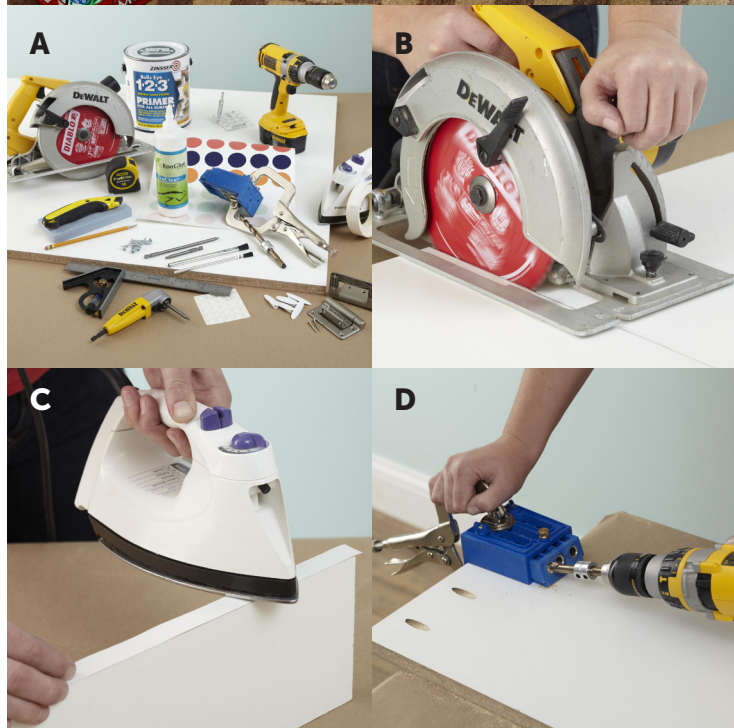
WHAT YOU'LL NEED:

- Two 4x8-foot sheets of $\frac{3}{4}$ -inch melamine plywood
- Tape measure
- Safety glasses
- Circular saw with fine-tooth melamine blade
- 220-grit sanding block
- Utility knife
- Iron-on edge banding
- Household iron
- Kreg pocket screw system
- Kreg $1\frac{1}{4}$ -inch Hi-Lo Pocket-Hole Screws
- Kreg Pocket-Hole Plugs
- Drill
- Right-angle drill (optional)
- Melamine glue
- Disposable glue brushes
- Clamps
- Rockler Lid-Stay Torsion Hinge Lid Support
- Rockler Lid-Stay Torsion Hinge Jig
- Latex primer
- Paintbrush
- Vinyl bumpers
- Vinyl decals (optional)

STEP 1 Gather your materials (a). Referring to the Cutting Diagram, measure and cut the pieces for the table from the melamine plywood using a circular saw with a fine-tooth melamine blade (b). Sand edges with a 220-grit sanding block.

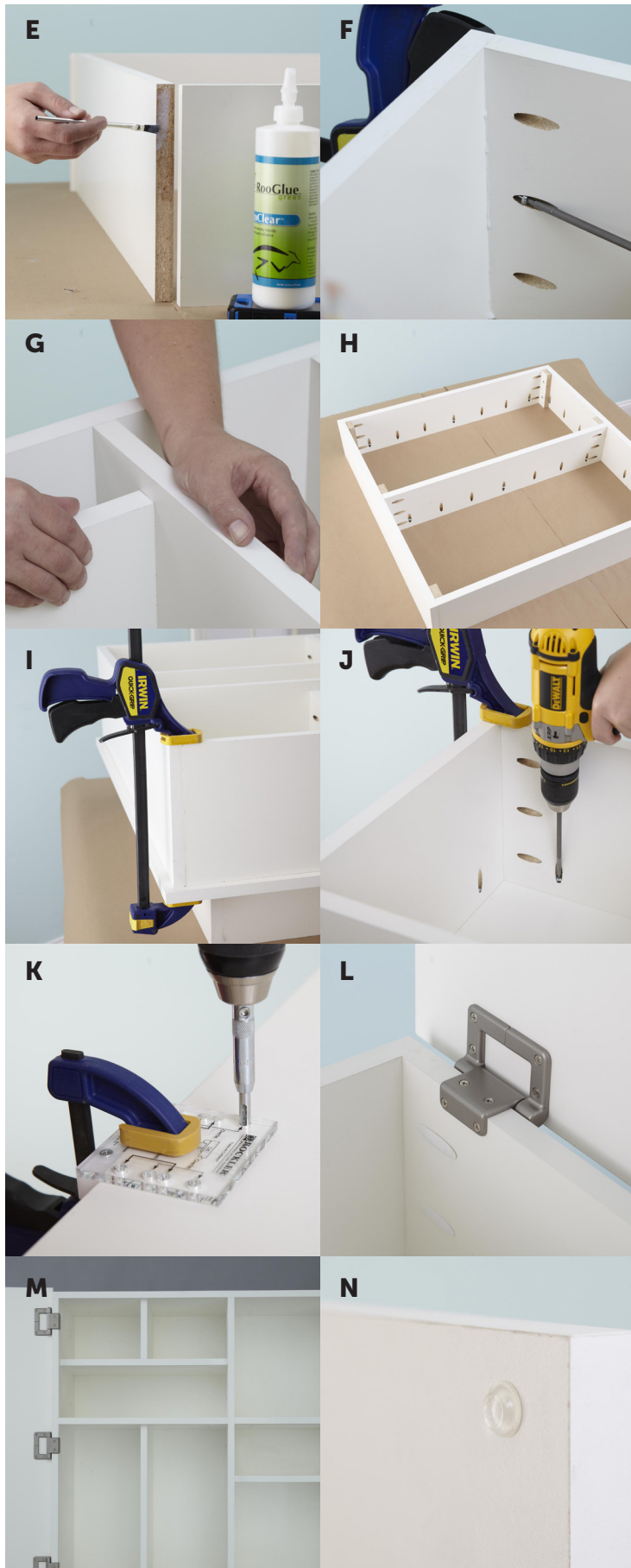
STEP 2 Gather the three $34\frac{1}{2}\times 9$ -inch and the two 36×9 -inch melamine pieces. Using an iron, apply edge banding to one long side of each board (c).

STEP 3 Referring to Assembly Diagram A and using the pocket screw system, drill one hole in the center of each end of each short board. Line the system up with the edges to drill two more holes in each end of each short board (d).



Lidded Coffee Table with Storage Compartments

Do It Yourself Storage Ideas 2015, page 24



STEP 4 Referring to Assembly Diagram B, assemble the 36-inch-square tabletop box frame. Apply glue to the cut ends of the shorter boards (e), then align the ends with the longer boards, making sure to position the holes facing inward and the banded edges up. Clamp; repeat with remaining corners. Secure corners with pocket screws in each pocket hole (f).

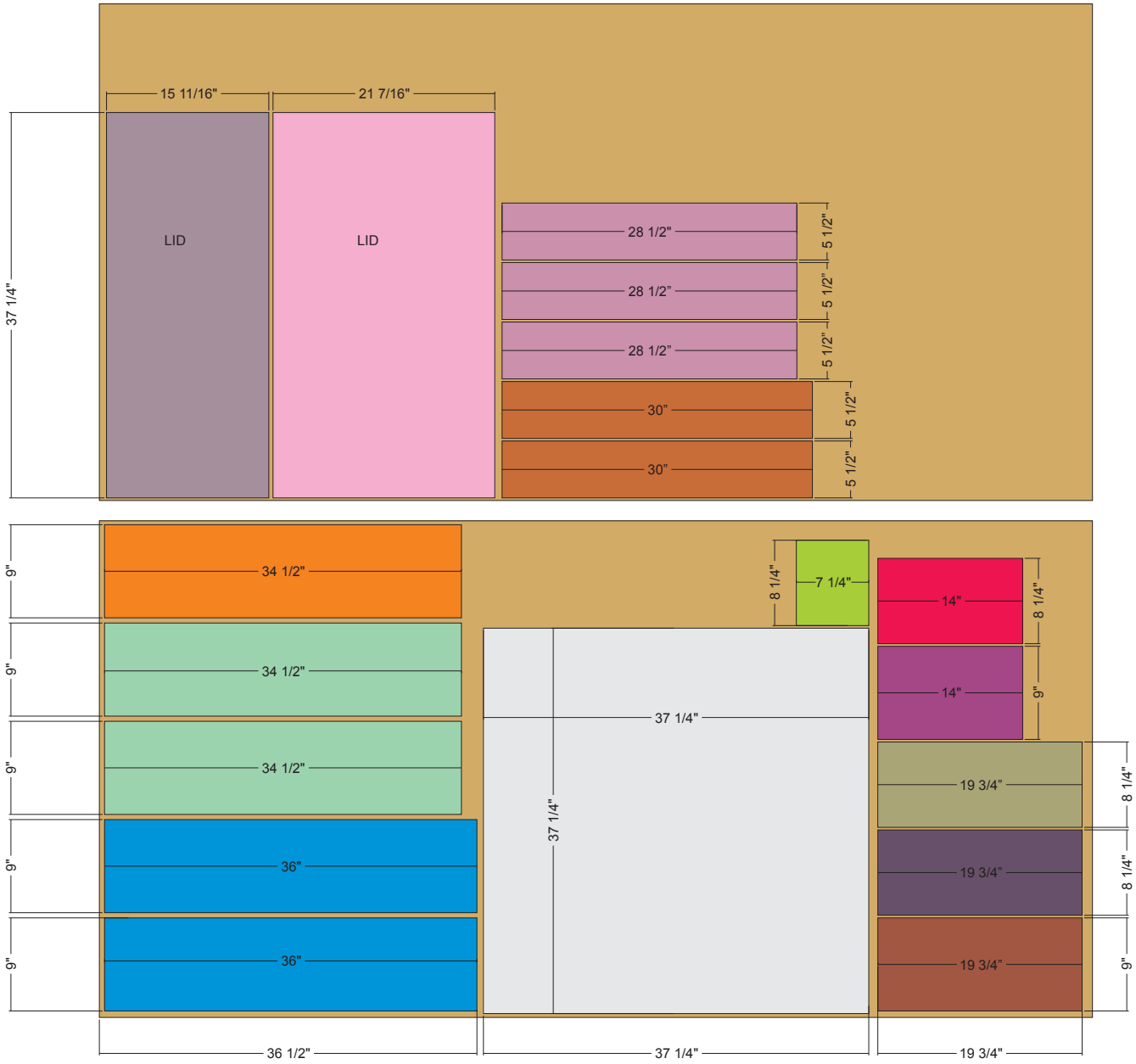
STEP 5 Referring to Assembly Diagram B for placement, position the remaining 34½x9-inch board inside the square; glue, clamp, and screw in place. Using the diagram for reference, add remaining compartments to the tabletop box frame, drilling pocket screw holes and securing with screws (g). Tighten pocket screws in all boards, and fit holes with pocket hole plugs. Add edge banding to the top exposed edges of the compartment walls. Drill pocket screw holes along the bottom edge of the assembled tabletop box frame.

STEP 6 Gather the three 28½x5½-inch and the two 30x5½-inch melamine pieces. Referring to Assembly Diagram C, repeat steps 3 and 4 to make the 30-inch-square toe-kick box. Center the remaining 28½x5½-inch board vertically inside the square; glue, clamp, and screw in place. Tighten pocket screws in all boards, and fit holes with pocket hole plugs. Cut 2x5½-inch reinforcement blocks from melamine scraps, and secure with screws at each corner as shown in diagram. Drill pocket holes approximately every 6-8 inches along the bottom edge of the assembled box (h).

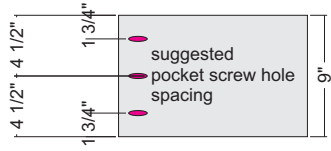
STEP 7 Add edge banding to all edges of the 37¼-inch-square table bottom and the two lids. Place bottom surface wrong side up. Apply glue to the exposed edges (the side with the pocket holes) of the assembled toe-kick box frame and center it on the table bottom. Clamp and screw together using predrilled pocket holes. Turn the assembly over. Apply glue to the bottom edges of the tabletop box, and center it on the assembly. Clamp and secure using predrilled pocket holes and screws (i, j).

STEP 8 Referring to Assembly Diagram D, locate and mark hinge locations (denoted in red). Using the hinge jig, predrill hinge holes (k), and attach torsion hinges to each lid and to the walls of the table. Secure each lid to table (l, m). (Torsion hinges prevent the lids from slamming shut and allow the lids to open without overextending.) Fill any remaining pocket holes with hole plugs, securing them with glue. Touch up any nicks in the melamine using primer. Apply vinyl bumpers at the corners of the lids (n). Apply vinyl decals as desired.

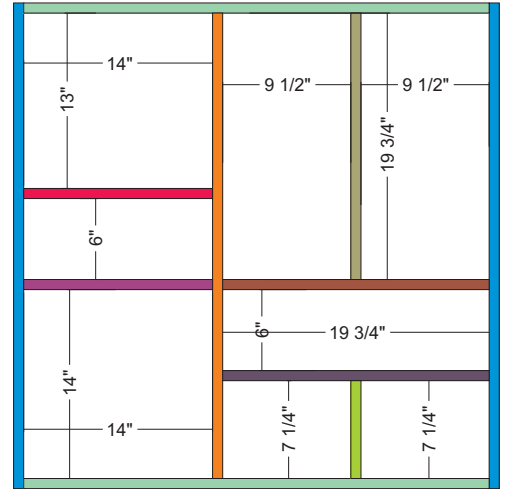
CUTTING DIAGRAM



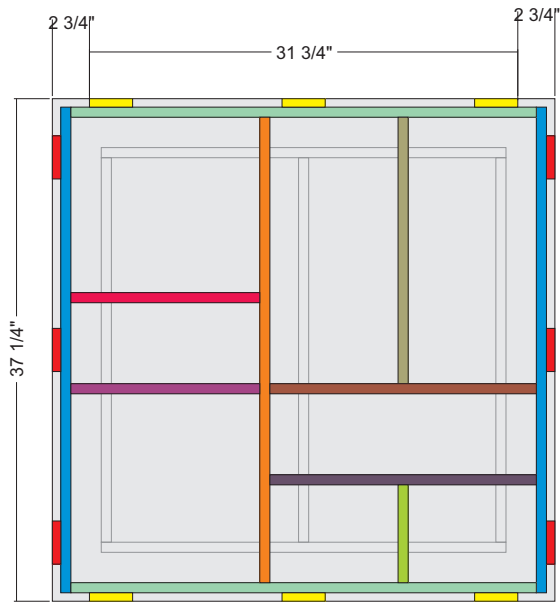
ASSEMBLY DIAGRAM A



ASSEMBLY DIAGRAM B



ASSEMBLY DIAGRAM D



ASSEMBLY DIAGRAM C

