

SEW SIMPLE  
GRAB BAG PATTERN  
Part 1 of 5

A

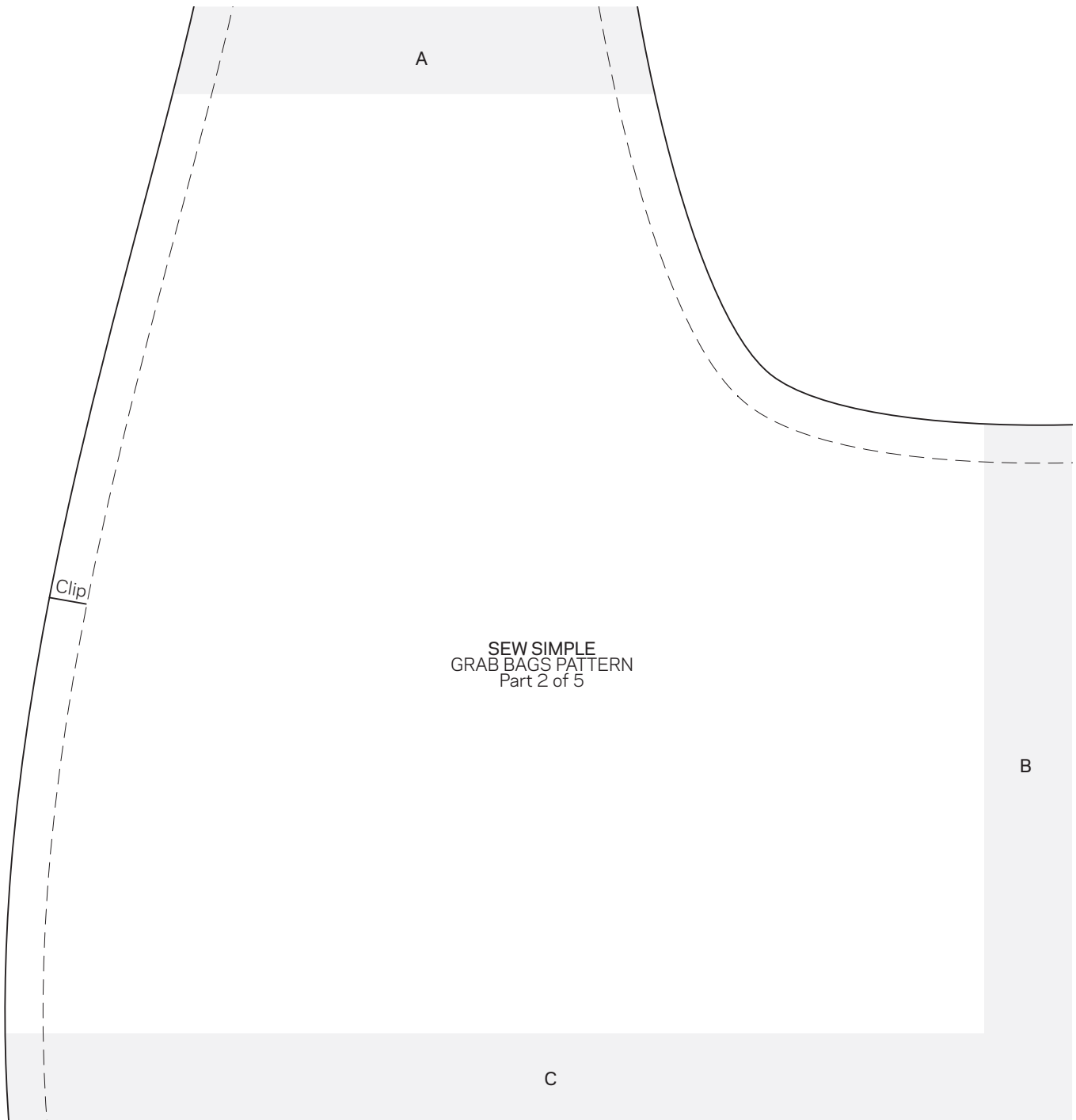
**To make an entire pattern,**  
cut out partial patterns on  
outside lines and tape together,  
overlapping shaded areas.

This box should  
measure 1".

← 1" →

**\* NOTE:**

When printing a downloadable  
pdf, set Page Scaling preference  
to NONE to print patterns at  
100%. Do NOT "Shrink to Fit"  
or "Fit to Printable Area."



SEW SIMPLE  
GRAB BAGS PATTERN  
Part 2 of 5

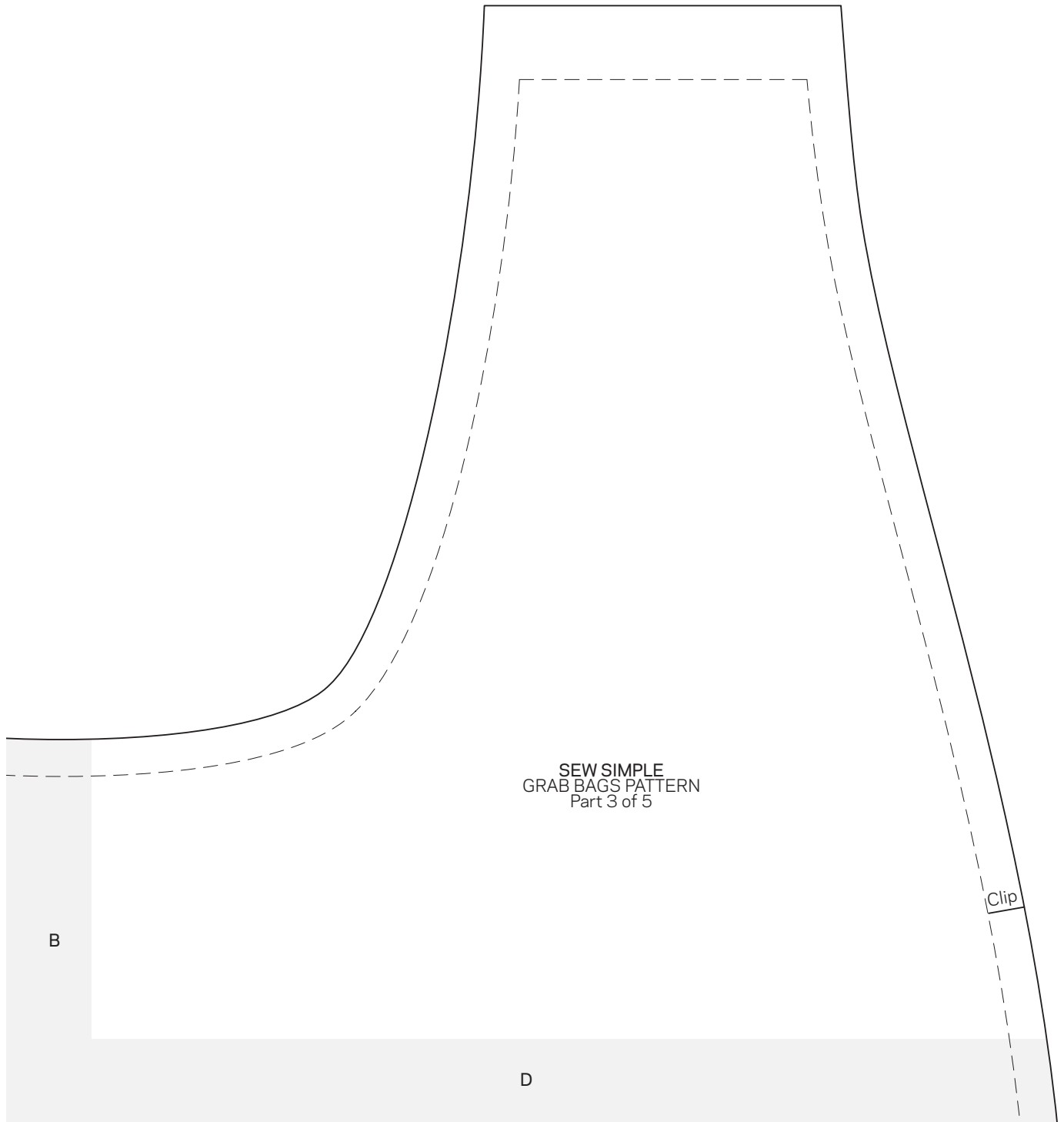
**To make an entire pattern,**  
cut out partial patterns on  
outside lines and tape together,  
overlapping shaded areas.

This box should  
measure 1".

← 1" →

**\* NOTE:**

When printing a downloadable  
pdf, set Page Scaling preference  
to NONE to print patterns at  
100%. Do NOT "Shrink to Fit"  
or "Fit to Printable Area."



SEW SIMPLE  
GRAB BAGS PATTERN  
Part 3 of 5

B

D

Clip

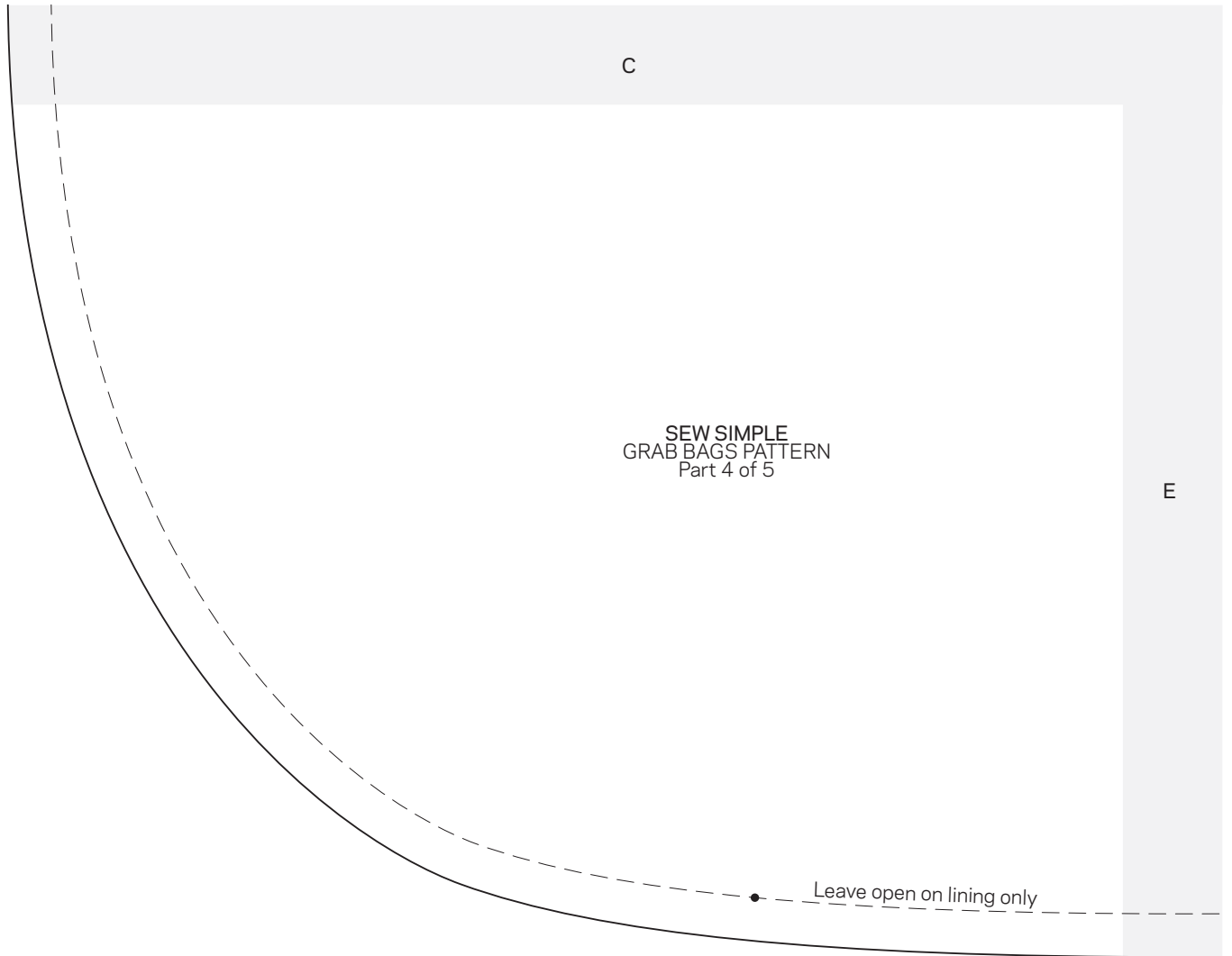
**To make an entire pattern,**  
cut out partial patterns on  
outside lines and tape together,  
overlapping shaded areas.

This box should  
measure 1".

← 1" →

**\* NOTE:**

When printing a downloadable  
pdf, set Page Scaling preference  
to NONE to print patterns at  
100%. Do NOT "Shrink to Fit"  
or "Fit to Printable Area."



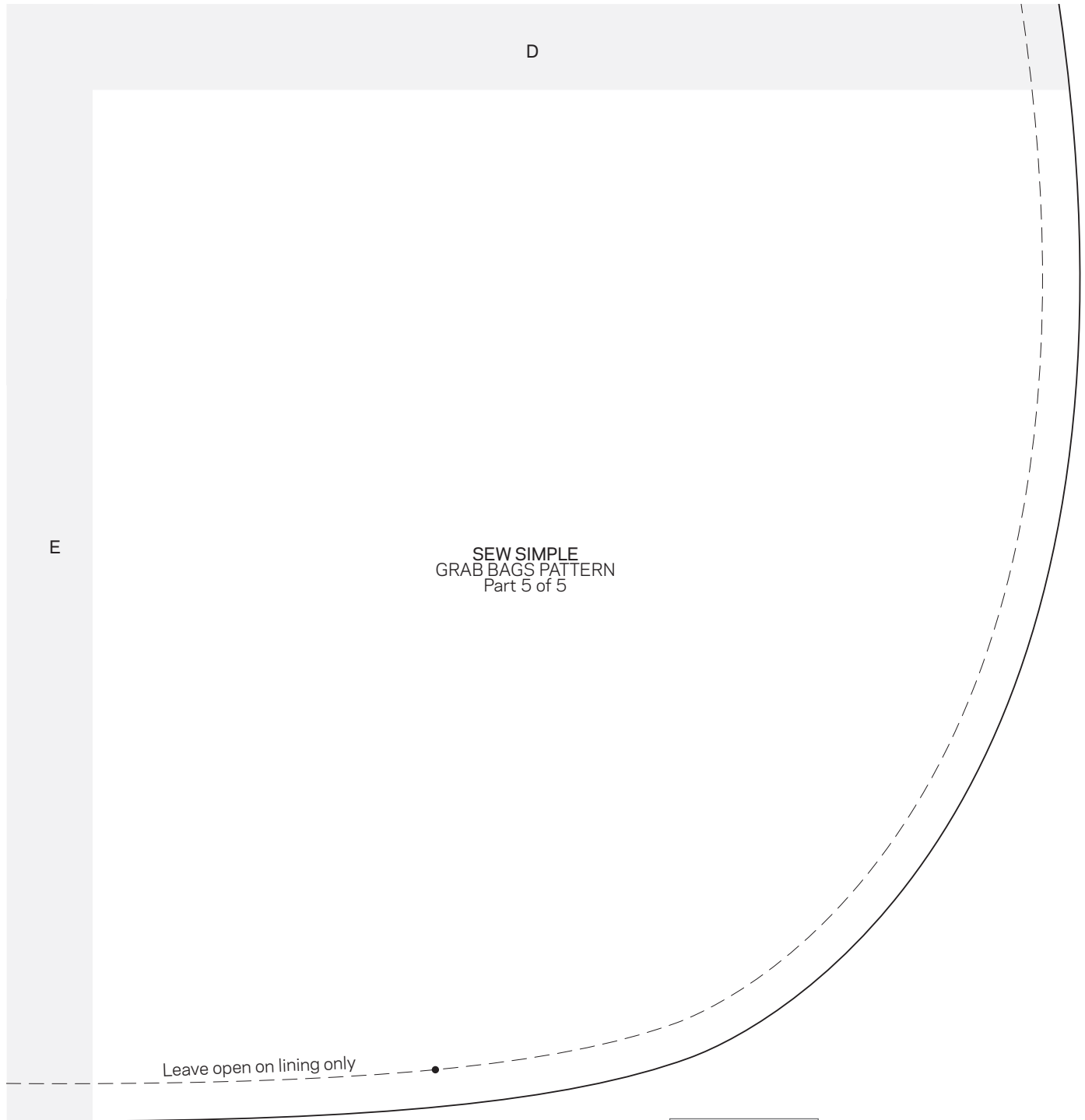
**To make an entire pattern,** cut out partial patterns on outside lines and tape together, overlapping shaded areas.

This box should measure 1".

← 1" →

**\* NOTE:**

When printing a downloadable pdf, set Page Scaling preference to NONE to print patterns at 100%. Do NOT "Shrink to Fit" or "Fit to Printable Area."



SEW SIMPLE  
GRAB BAGS PATTERN  
Part 5 of 5

Leave open on lining only

**To make an entire pattern,**  
cut out partial patterns on  
outside lines and tape together,  
overlapping shaded areas.

This box should  
measure 1".

← 1" →

**\* NOTE:**

When printing a downloadable  
pdf, set Page Scaling preference  
to NONE to print patterns at  
100%. Do NOT "Shrink to Fit"  
or "Fit to Printable Area."