

Project: Wee Wonder

INSPIRED BY TINY TREASURES FROM DESIGNER MONIQUE DILLARD (OPENGATEQUILTS.COM)

QUILT TESTER: JODY SANDERS



FABRICS are from the New Hope collection by Jo Morton for Moda Fabrics (modafabrics.com).

Try a scrappy mini quilt featuring small prints in creatively arranged small units.

Project: Wee Wonder

Materials

- 18×21" (fat quarter) cream print (blocks)
- 10" square yellow print (blocks)
- ¼ yard each assorted green, red, and black prints (blocks)
- 9×21" (fat eighth) tan print (sashing)
- 9×21" (fat eighth) red floral (sashing, inner border)
- 18×21" (fat quarter) black print (outer border)
- 18×21" (fat quarter) binding fabric
- ⅔ yard backing fabric
- 22" square batting

Finished quilt: 15½" square

Finished block: 5" square

Yardages and cutting instructions are based on 42" of usable fabric width.

Measurements include ¼" seam allowances. Sew with right sides together unless otherwise stated.

Press seams in directions indicated by arrows on diagrams. If no direction is specified, press seam toward darker fabric.

Cut Fabrics

Cut pieces in the following order.

From cream print, cut:

- 80—1½" squares

From yellow print, cut:

- 20—1½" squares

From assorted green prints, cut:

- 16—1½×2½" rectangles

From assorted red prints, cut:

- 16—1½×2½" rectangles

From assorted black prints, cut:

- 16—1½×2½" rectangles

From tan print, cut:

- 4—1½×5½" sashing strips

From red floral, cut:

- 2—1×12½" inner border strips
- 2—1×11½" inner border strips
- 1—1½" square

From black print, cut:

- 2—2×15½" outer border strips
- 2—2×12½" outer border strips

From binding fabric, cut:

- 4—2½×21" binding strips

Assemble Flying Geese Units

1. Mark a diagonal line on wrong side of all cream print 1½" squares and 16 yellow print 1½" squares.
2. Align a marked cream print square with one end of an assorted green print 1½×2½" rectangle (**Diagram 1**; note direction of marked line). Sew on marked line. Trim seam allowance to ¼" and press open attached triangle. Add a second marked cream print square to opposite end of rectangle to make a Flying Geese Unit A. Repeat to make 16 A units total.
3. Using marked cream print squares and assorted red print 1½×2½" rectangles, repeat Step 2 to make 16 Flying Geese B units total (**Diagram 2**).
4. Using marked cream print and yellow print squares, and assorted black print 1½×2½" rectangles, repeat Step 2 to make 16 Flying Geese C units total (**Diagram 3**).

Assemble Blocks

1. Gather four Flying Geese A units, four Flying Geese B units, four Flying Geese C units, and one yellow print 1½" square.
2. Referring to **Block Assembly Diagram**, lay out pieces in three rows. Sew together pieces in rows. Join rows to make a block (**Diagram 4**). The block should

be 5½" square including seam allowances.

3. Repeat steps 1 and 2 to make four blocks total.

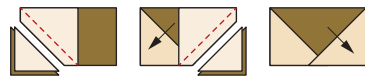
Assemble Quilt Top

1. Referring to **Quilt Assembly Diagram**, lay out blocks, tan print 1½×5½" sashing strips, and red floral 1½" square in three rows. Sew together pieces in rows. Press seams toward sashing strips. Join rows to make quilt center. Press seams in one direction. The quilt center should be 11½" square including seam allowances.
2. Sew red floral 1×11½" inner border strips to opposite edges of quilt top. Add red floral 1×12½" inner border strips to remaining edges. Press all seams toward inner border.
3. Sew black print 2×12½" outer border strips to opposite edges of quilt top. Add black print 2×15½" outer border strips to remaining edges to complete quilt top. Press all seams toward outer border.

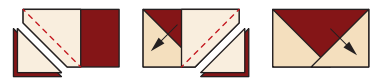
Finish Quilt

1. Layer quilt top, batting, and backing; baste. Quilt as desired.
2. Bind with binding strips.

Project: Wee Wonder



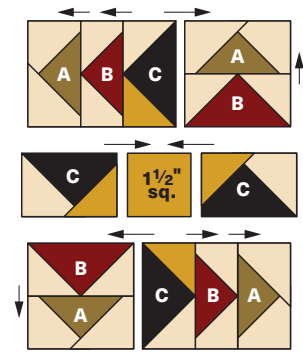
Unit A
Diagram 1



Unit B
Diagram 2



Unit C
Diagram 3



Block Assembly Diagram

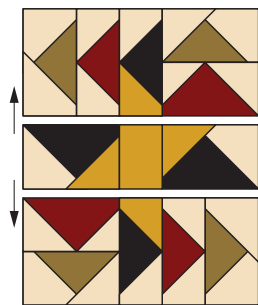
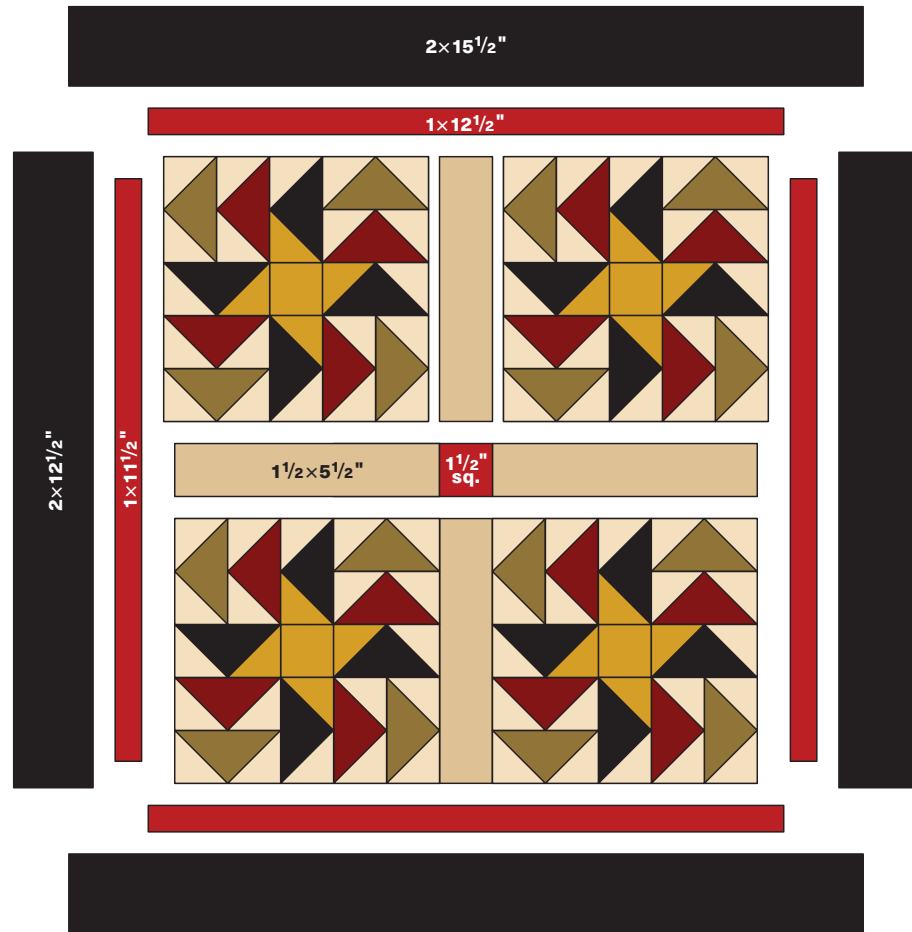


Diagram 4

Project: Wee Wonder



Quilt Assembly Diagram