

Project: Personalized Appliqué Band

AMERICAN PATCHWORK & QUILTING

1 MILLION
PILLOWCASE CHALLENGE

Pattern 87



FABRICS are from the Abby Rose collection by Robin Pickens for Moda Fabrics (modafabrics.com).

Project: Personalized Appliqué Band

Materials

FOR ONE PILLOWCASE

- ¼ yard white tone-on-tone (appliqué)
- ⅜ yard green tone-on-tone (pillowcase band)
- ⅞ yard floral print (pillowcase body)
- Lightweight fusible web

Finished pillowcase: 30×20"
(fits a standard-size pillow)

Yardages and cutting instructions are based on 42" of usable fabric width.

Measurements include ¼" seam allowances for piecing blocks and pillowcase construction. Sew with right sides together unless otherwise stated.

Cut Fabrics

Appliqué shapes are cut with an AccuQuilt GO! fabric cutter using the GO! Classic 2" Alphabet Uppercase Set Die (#55559). If you wish to use scissors instead, the patterns are on *pages 4–8*.

To cut out appliqués with an AccuQuilt fabric cutter, complete the following steps.

1. Place fusible web, paper side up, on the wrong side of white tone-on-ton. Press according to manufacturer's instructions; let cool.
2. Following manufacturer's instructions, use fabric cutting die to cut out two of each desired letter from prepared fabrics. Peel off paper backings.

To cut out appliqués with scissors, complete the following steps.

1. Lay fusible web, paper side up, over desired patterns. Use

a pencil to trace each pattern twice, leaving ½" between tracings. Cut out each fusible-web shape roughly ¼" outside traced lines.

2. Following manufacturer's instructions, press fusible-web shapes onto wrong side of white tone-on-tone; let cool. Cut out fabric shapes on drawn lines. Peel off paper backings.

From white tone-on-tone, cut:

- 2 each of desired letters

From green tone-on-tone, cut:

- 2—6¼×40½" strips

From floral print, cut:

- 1—25½×41" rectangle

Appliqué Band

1. Referring to **Appliqué Placement Diagram**, center prepared appliqué letters on right side of one green tone-on-tone 6¼×40½" strip. Following manufacturer's instructions, peel off paper backings and press appliqué letters in place; let cool.
2. Using a zigzag or blanket stitch, machine-stitch around each appliqué shape.

Assemble Band

Use a ¼" seam allowance for the following steps.

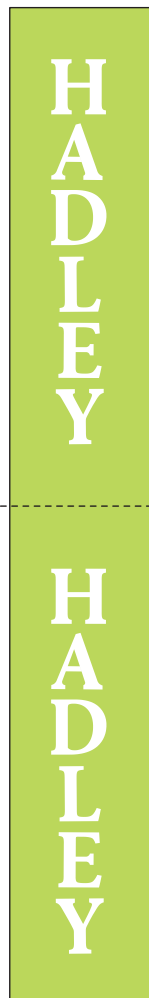
1. Referring to **Band Assembly Diagram**, sew together appliquéd strip and remaining green tone-on-tone 6¼×40½" strip.
2. Join short edges of Step 1 unit to make a loop. Fold loop in half with wrong side inside; press to make pillowcase band.

Assemble Pillowcase

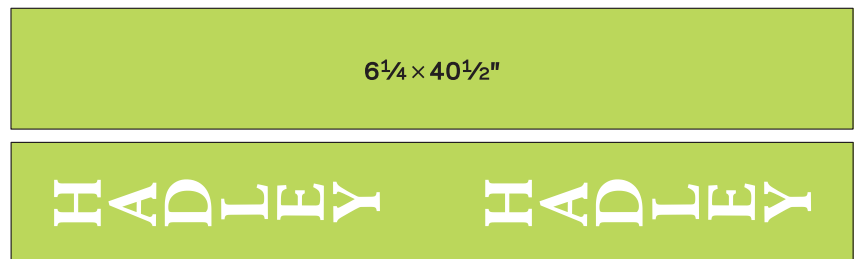
Use a ½" seam allowance for the following steps.

1. Fold floral print 25½×41" rectangle in half to form a 25½×20½" rectangle. Sew together set of long edges and one set of short edges to make pillowcase body. Turn right side out; press flat.
2. Matching raw edges and seams, slide pillowcase band over pillowcase body with appliqué side of band facing right side of pillowcase body (**Diagram 1**); pin. Sew together band and pillowcase body.
3. Press pillowcase band open, pressing seam allowances toward pillowcase body. Topstitch ⅛" from band edge on pillowcase body (**Diagram 2**) to secure seam allowance and complete pillowcase.

Project: Personalized Appliqué Band



APPLIQUÉ PLACEMENT DIAGRAM



BAND ASSEMBLY DIAGRAM



DIAGRAM 1

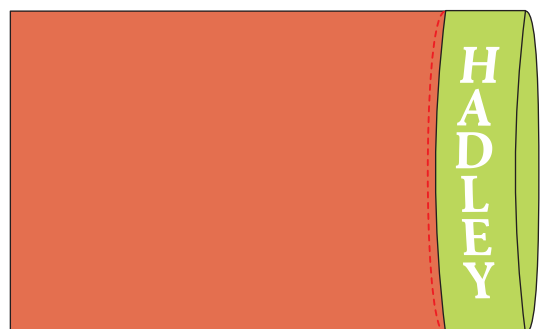
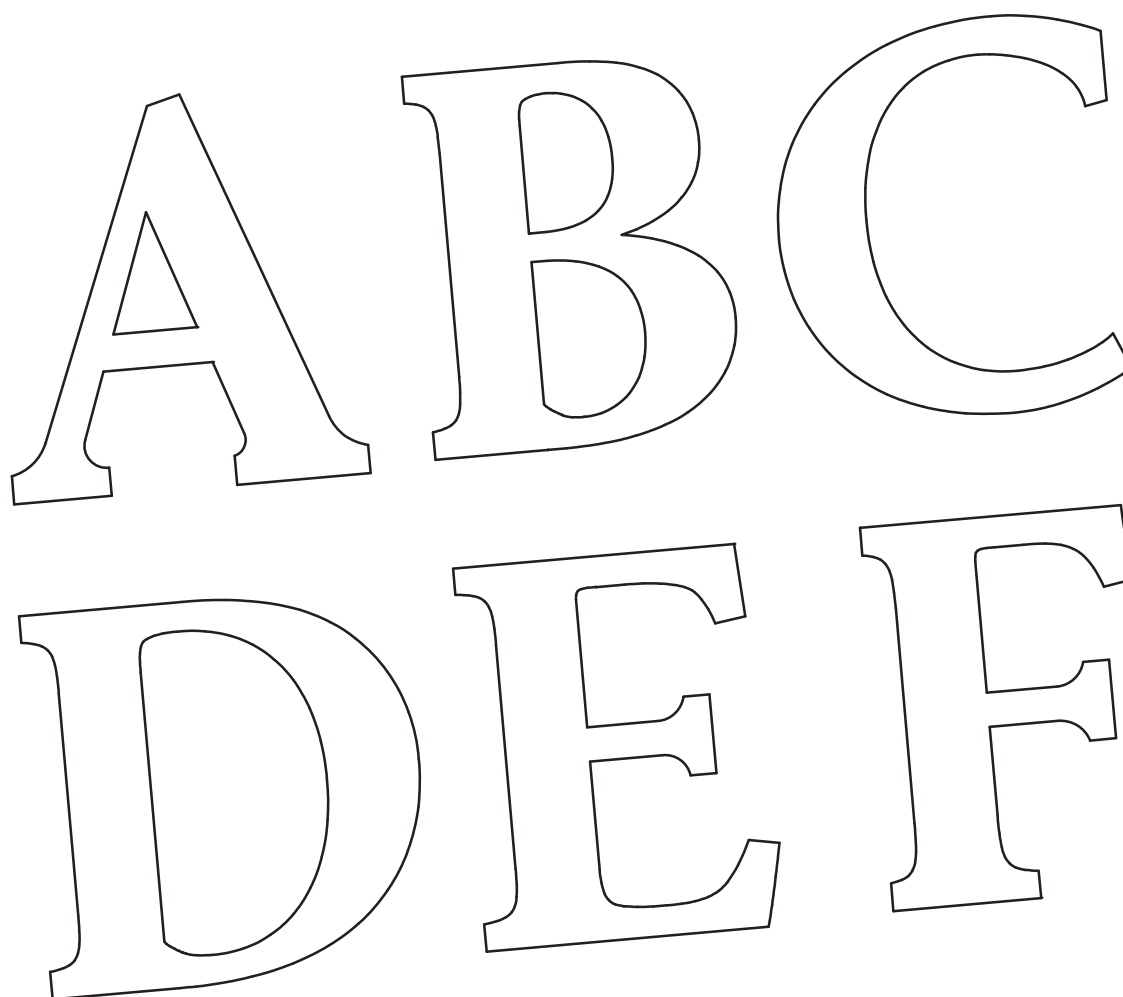


DIAGRAM 2

Project: Personalized Appliqué Band



GO! Classic 2" Alphabet Uppercase Set Die (#55559).
Shape design © AccuQuilt. Used with permission.



This box should
measure 1".

← 1" →

*** NOTE:**

When printing a downloadable PDF, set Page Scaling preference to None to print patterns at 100%. Do not use Shrink to Fit or Fit to Printable Area.

Project: Personalized Appliqué Band



GO! Classic 2" Alphabet Uppercase Set Die (#55559).
Shape design © AccuQuilt. Used with permission.



This box should
measure 1".



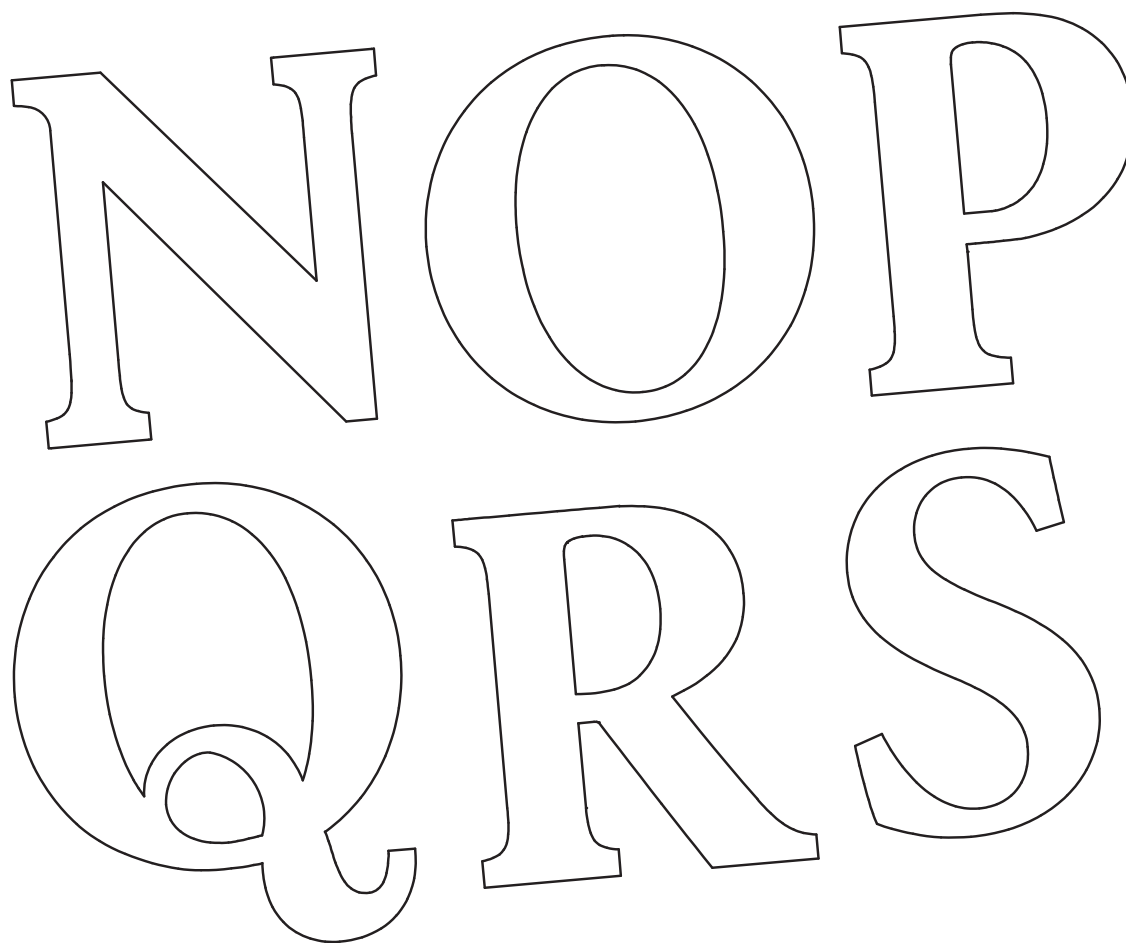
*** NOTE:**

When printing a downloadable PDF, set Page Scaling preference to None to print patterns at 100%. Do not use Shrink to Fit or Fit to Printable Area.

Project: Personalized Appliqué Band



GO! Classic 2" Alphabet Uppercase Set Die (#55559).
Shape design © AccuQuilt. Used with permission.



This box should
measure 1".



*** NOTE:**

When printing a downloadable PDF, set Page Scaling preference to None to print patterns at 100%. Do not use Shrink to Fit or Fit to Printable Area.

Project: Personalized Appliqué Band



GO! Classic 2" Alphabet Uppercase Set Die (#55559).
Shape design © AccuQuilt. Used with permission.



This box should
measure 1".

← 1" →

*** NOTE:**

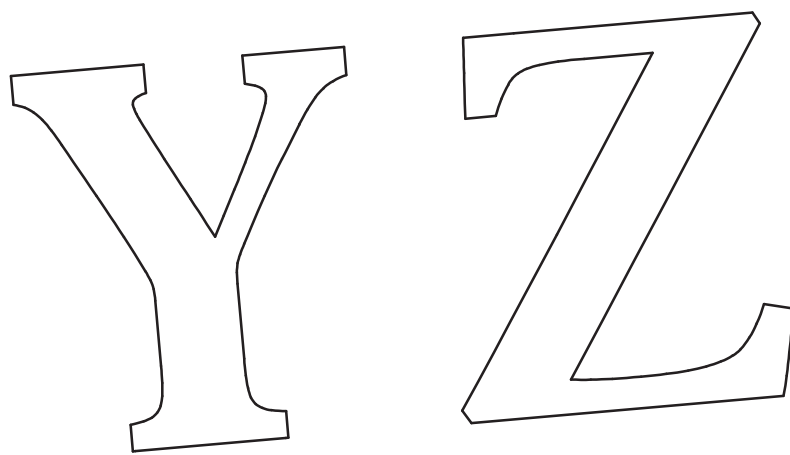
When printing a downloadable PDF, set Page Scaling preference to None to print patterns at 100%. Do not use Shrink to Fit or Fit to Printable Area.

Project: Personalized Appliqué Band

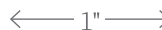


GO! Classic 2" Alphabet Uppercase Set Die (#55559).

Shape design © AccuQuilt. Used with permission.



This box should
measure 1".



*** NOTE:**

When printing a downloadable PDF, set Page Scaling preference to None to print patterns at 100%. Do not use Shrink to Fit or Fit to Printable Area.