

1 MILLION PILLOWCASE CHALLENGE



- With the “burrito” method, a banded pillowcase is easy to create. Follow these simple step-by-step photos to roll your own pillowcase in a jiffy!

1

1



From band fabric, cut:

□ 1— 10×41" strip

From pillowcase body fabric, cut:

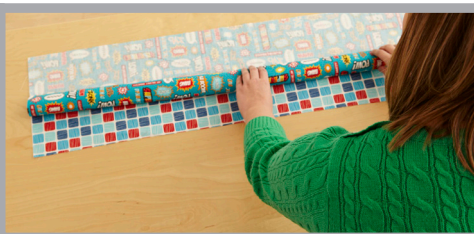
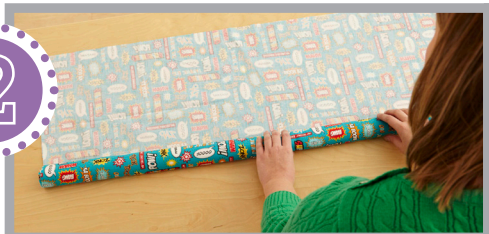
□ 1— 26½×41" rectangle

Unfold and place the band strip printed side up on a table. Matching up the long edges, put the pillowcase body rectangle printed side down on top of the band strip.

TIP: You can pin the long edges together if you want, but usually the fabrics will stick together if you just smooth them out with your hand.

* When you're laying out the pieces on the table, you stand on this side of them.

2



Beginning at lower long edge, roll the pillowcase body toward the band that is underneath it. When you get to the band, don't roll it up. Just keep on rolling the pillowcase body only.

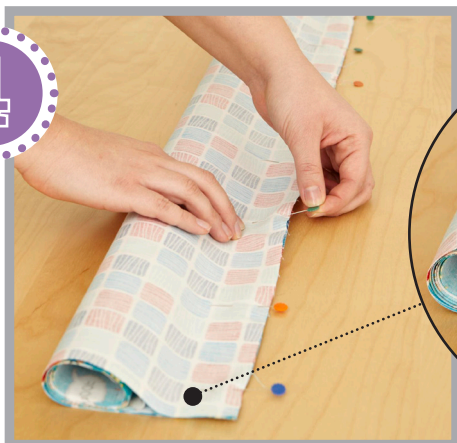
* When you're rolling up the pillowcase body, stand on this side with the band underneath it along the top edge.

3



Stop rolling when you reach a point about halfway up the band. The long edges that you matched up in Step 1 should still be straight and together.

4



Bring the band's bottom edge up and over the pillowcase body roll to form a tube. Match up all three long edges. Pin the three long edges together, making sure the rolled pillowcase body is out of the way (*inset*) and doesn't get caught by your pins. When you have it all pinned, peek in the tube and check to make sure that all the layers are lined up evenly. If they're not, remove a few pins, adjust the layers to even them out, and repin.

5



NOTE: With the machine's presser foot down, backstitch at the beginning and ending of each seam.

Sew along the pinned edges with a straight seam using a $\frac{1}{2}$ " seam allowance. The bulk of the tube will be in your lap when you start sewing this seam.

TIP: Use layers of painter's tape or masking tape as a guide to keep your seam straight. Position it so the right edge of the tape is $\frac{1}{2}$ " from the needle.

Do not sew over pins. Instead, remove each pin just before it reaches the sewing machine's presser foot.

TIP: Sew at a slow speed so that you can control your fabric layers and keep the seamline straight. If you have to stop to readjust the layers, stop with your sewing machine needle down in the fabric so it won't shift as you adjust the pieces.

6

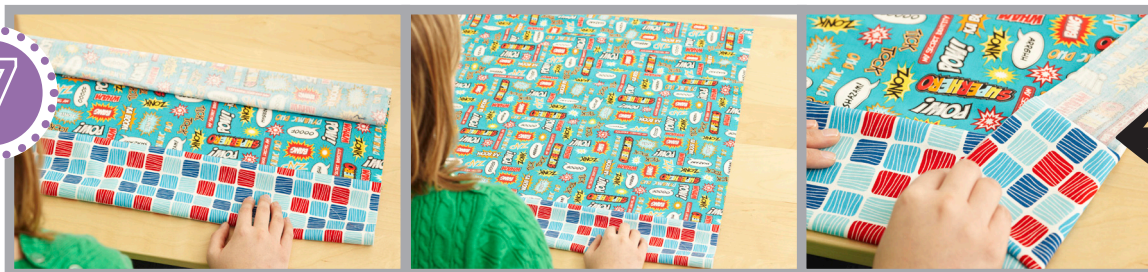


Now for the magic! It's time to turn the tube so the printed side is out. To do this, fold over a cuff at one end of the band.

With your fingers holding on to the band and gently pulling it down, pull up on the roll inside the

tube. Continue pulling the band and the roll in opposite directions, as if you were pulling a sleeve from a sweater, until you've turned it completely right side out.

7



Unroll the pillowcase body. All the seam allowances should be enclosed inside the pillowcase band.

Look! No raw edges on either side of the band!

8



For this next step, a little adult help is good. With an adult tugging slightly on the folded edge of the band, press the seam flat on the printed side where the band and body come together. The seam allowances should be going toward the band. Turn over and repeat to press the seam on the faded (wrong) side.

FINISH THE PILLOWCASE

9

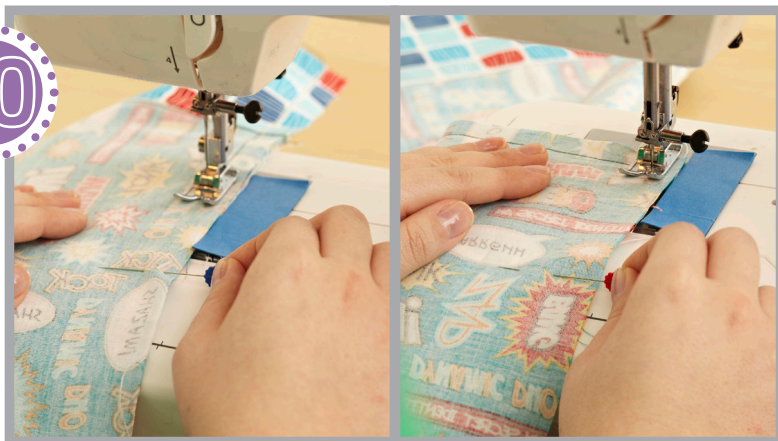


To complete your pillowcase, finish it with side and bottom seams.

Fold the pillowcase in half with printed sides together. Pin along side and bottom edges. Make sure the heads of the pins are sticking off the edge so you can take them out as you sew.

First pin the long edges together, beginning at the band and working toward the opposite end. To make sure it matches up properly, pin the intersection where the band meets the body. Then, pin across the short end at the bottom of the pillowcase. Using a ruler and marking pen, mark a dot on the bottom corner $\frac{1}{2}$ " from each edge.

10



Using a $\frac{1}{2}$ " seam allowance, begin at the top edge of the band and backstitch to secure the start of the seam. (The bulk of the pillowcase will be in your lap as you begin to sew this seam.) Sew a straight seam to join the long raw edges of the pillowcase.

When you get to the dot marked $\frac{1}{2}$ " from the bottom corner, stop with your needle down in the fabric. Lift the presser foot and pivot the fabric and continue sewing across the bottom of the pillowcase. Backstitch to secure the end of the seam.

11



To make sure the seam allowance doesn't fray, zigzag stitch in the seam allowance (to the right of the line of stitching you did in Step 10) across the pillowcase side and bottom.

12



Turn the pillowcase printed side out and press the seam allowance flat. For best results, you may need to roll the seam between your fingers to nudge it to the edge before pressing it.