

Project: Snowball Pillowcase



American Patchwork & Quilting

1 MILLION
PILLOWCASE CHALLENGE

Pattern 34

FABRICS are from the Rockets and Robots collection by Blue Sky Studios for Benartex (benartex.com).

Project: Snowball Pillowcase

Materials

- 8—5½" squares assorted prints (band)
- ⅜ yard solid (band)
- ⅞ yard print (pillowcase body)

Finished pillowcase: 30×20"
(fits a standard-size bed pillow)

Yardages and cutting instructions are based on 42" of usable fabric width.

Measurements include ¼" seam allowances for piecing blocks and ½" seam allowances for pillowcase construction. Sew with right sides together unless otherwise stated.

Cut Fabrics**From solid, cut:**

- 1—5½×40½" strip
- 32—1⅞" squares

From print, cut:

- 1—25¾×41" rectangle

Assemble Band

1. Use a pencil to mark a diagonal line on wrong side of each solid 1⅞" square. To prevent fabric from stretching as you draw the lines, place 220-grit sandpaper under each square.
2. Align a marked 1⅞" square with one corner of an assorted print 5½" square (**Diagram 1**). Sew on drawn line; trim excess fabric, leaving ¼" seam allowance. Press open attached triangle.
3. Repeat Step 2 to add marked 1⅞" squares to remaining corners of print 5½" square to make a Snowball block (**Diagram 2**). The block should be 5½" square including seam allowances.
4. Repeat Steps 2 and 3 to make eight Snowball blocks total.

5. Lay out blocks in a horizontal row as shown in **Band Assembly Diagram**. Sew together blocks to make a Snowball strip. Press seams in one direction. The strip should be 40½×5½" including seam allowances.
6. Referring to **Band Assembly Diagram**, sew together solid 5½×40½" strip and Snowball strip along a pair of long edges.
7. Join short edges of Step 6 unit to make a loop. Fold loop in half with wrong side inside; press to make pillowcase band.

Assemble Pillowcase

1. Fold print 25¾×41" rectangle in half widthwise to form a 25¾×20½" rectangle. Using a ½" seam allowance, sew together long edges and a pair of short edges to make pillowcase body. Turn right side out and press flat.
2. Matching raw edges, slide pillowcase band over pillowcase body with Snowball blocks facing pillowcase body (**Diagram 3**); pin. Using a ¼" seam allowance, sew together through all layers.
3. Press pillowcase band open, pressing seams toward pillowcase body. Topstitch ⅞" from band edge on pillowcase body to secure seam allowances and complete pillowcase (**Diagram 4**).

Project: Snowball Pillowcase

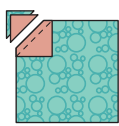


DIAGRAM 1

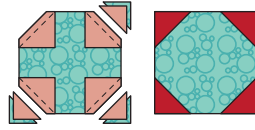
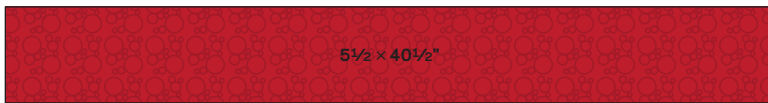
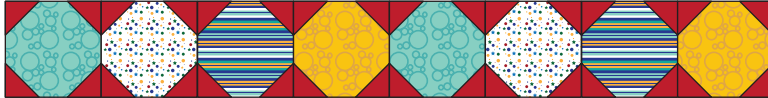


DIAGRAM 2



BAND ASSEMBLY DIAGRAM

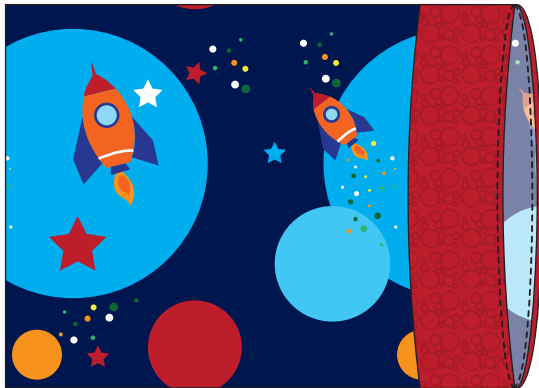


DIAGRAM 3

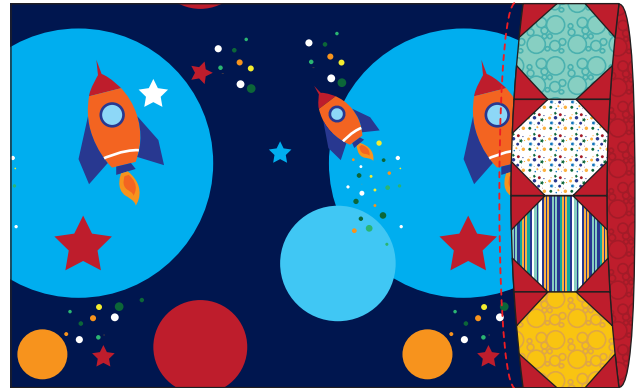


DIAGRAM 4