

Project: Pillowcase with Crazy Quilt Band

AMERICAN PATCHWORK & QUILTING

1 MILLION
PILLOWCASE CHALLENGE

Pattern 89



FABRICS are from the Stonehenge Savanna collection by Linda Ludovico for Northcott (northcott.com).

Project: Pillowcase with Crazy Quilt Band

Materials

FOR ONE PILLOWCASE

- $\frac{7}{8}$ yard total assorted animal prints (blocks)
- 10" square brown print (pillowcase band)
- $\frac{1}{4}$ yard dark green animal print (pillowcase band)
- $\frac{3}{4}$ yard large animal scene print (pillowcase body)

Finished pillowcase: 30 $\frac{3}{4}$ ×20"
(fits a standard-size bed pillow).

Yardages and cutting instructions are based on 42" of usable fabric width.

Measurements include $\frac{1}{4}$ " seam allowances for piecing strips and $\frac{1}{2}$ " seam allowances for pillowcase construction. Sew with right sides together unless otherwise stated.

Cut Fabrics

Pillowcase band shapes were cut with the AccuQuilt GO! Crazy Quilt 6" Finished Die (#55226). If you wish to use templates instead, the patterns are on pages 5–6.

From assorted animal prints, cut:

- 6 each of all patterns (A, B, C, D, E, F, G, H, I, J)

From brown print, cut:

- 1—2 $\frac{1}{2}$ ×6 $\frac{1}{2}$ " rectangle
- 2—1 $\frac{1}{2}$ ×6 $\frac{1}{2}$ " rectangles

From dark green animal print, cut:

- 1—6 $\frac{1}{2}$ ×40 $\frac{1}{2}$ " strip

From animal scene print, cut:

- 1—26×41" rectangle

Assemble Blocks

Press seams out from center.

1. Sew together an A piece and a B piece (**Diagram 1**). Add a C piece (**Diagram 2**).
2. Sew together a D piece and an E piece (**Diagram 3**).

3. Sew together an F piece and a G piece (**Diagram 4**).

4. Sew together an H piece and an I piece (**Diagram 5**). Add a J piece (**Diagram 6**).

5. Sew together Step 3 and Step 4 units (**Diagram 7**).

6. Sew together Step 5 and Step 2 units (**Diagram 8**).

7. Sew together Step 6 and Step 1 units to make a block (**Diagram 9**).

8. Repeat steps 1–7 to make six blocks total.

Assemble Band

Use a $\frac{1}{4}$ " seam allowance for the following steps.

1. Referring to **Band Assembly Diagram**, lay out in a row brown print 1 $\frac{1}{2}$ ×6 $\frac{1}{2}$ " and 2 $\frac{1}{2}$ ×6 $\frac{1}{2}$ " rectangles and blocks. Join pieces to make a pieced strip. The strip should be 6 $\frac{1}{2}$ ×40 $\frac{1}{2}$ " including seam allowances.
2. Sew together pieced strip and dark green animal print 6 $\frac{1}{2}$ ×40 $\frac{1}{2}$ " strip (**Band Assembly Diagram**).
3. Join short ends of Step 2 unit to make a loop. Press seam open. Fold loop in half with wrong side inside; press to make pillowcase band.

and one set of short edges to make pillowcase body. Turn right side out; press flat.

2. Matching raw edges and seams, slide pillowcase band over pillowcase body with pieced side of band facing right side of pillowcase body (**Diagram 11**); pin. Sew together band and pillowcase body.
3. Press pillowcase band open, pressing seam allowances toward pillowcase body. Topstitch $\frac{1}{8}$ " from band edge to secure seam allowance and complete pillowcase (**Diagram 12**).

Assemble Pillowcase

Use a $\frac{1}{2}$ " seam allowance for the following steps.

1. Fold animal scene print 26×41" rectangle in half to form a 26×20 $\frac{1}{2}$ " rectangle. Sew together the set of long edges

Project: Pillowcase with Crazy Quilt Band

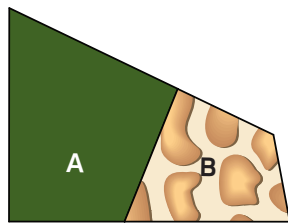


DIAGRAM 1

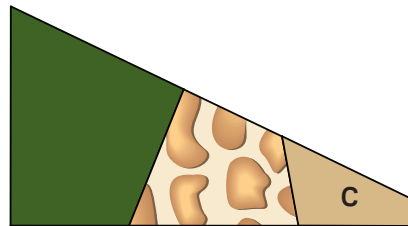


DIAGRAM 2

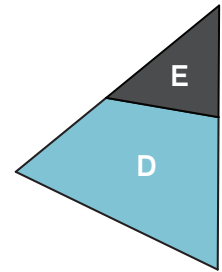


DIAGRAM 3

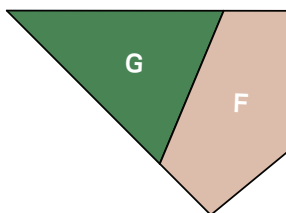


DIAGRAM 4

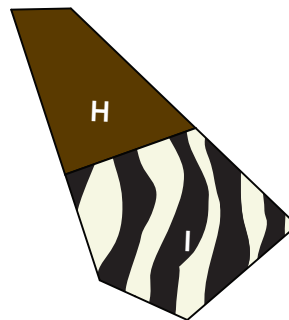


DIAGRAM 5

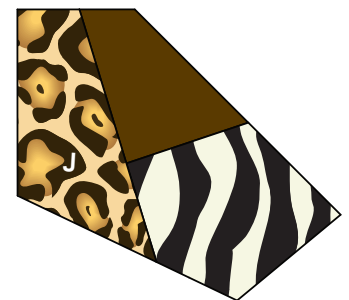


DIAGRAM 6

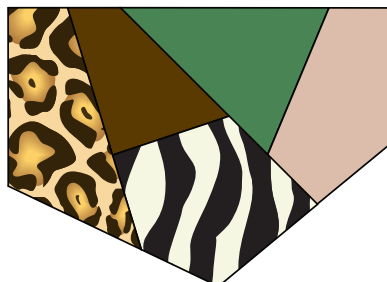


DIAGRAM 7

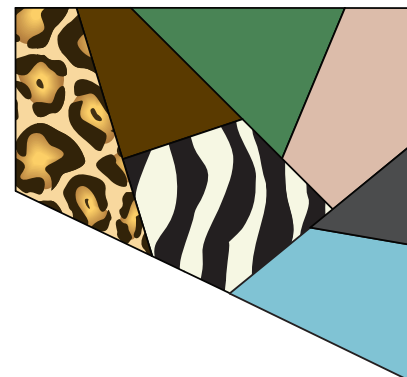
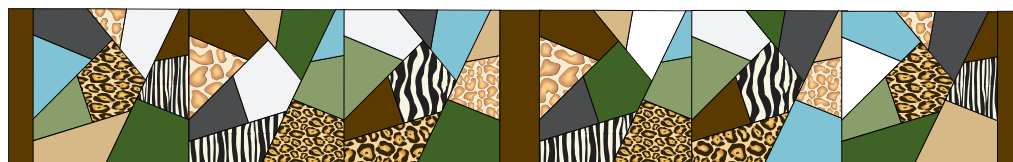
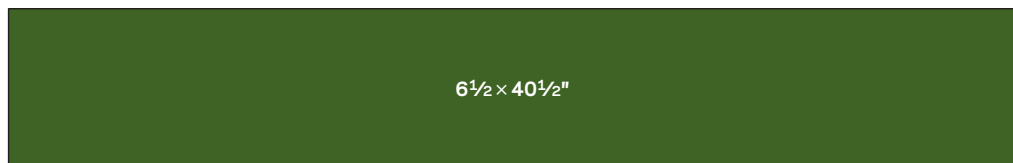
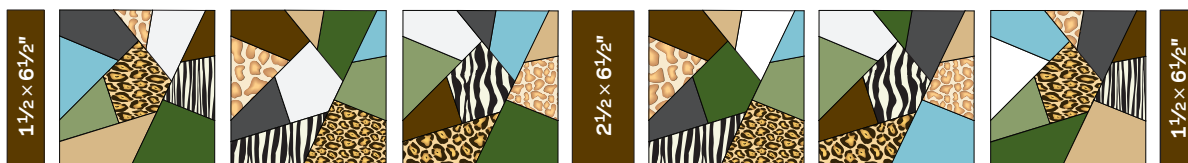


DIAGRAM 8



DIAGRAM 9

Project: Pillowcase with Crazy Quilt Band



BAND ASSEMBLY DIAGRAM

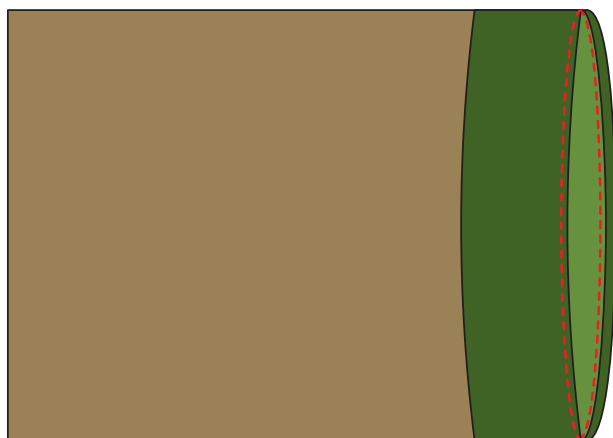


DIAGRAM 11



DIAGRAM 12

Project: Pillowcase with Crazy Quilt Band



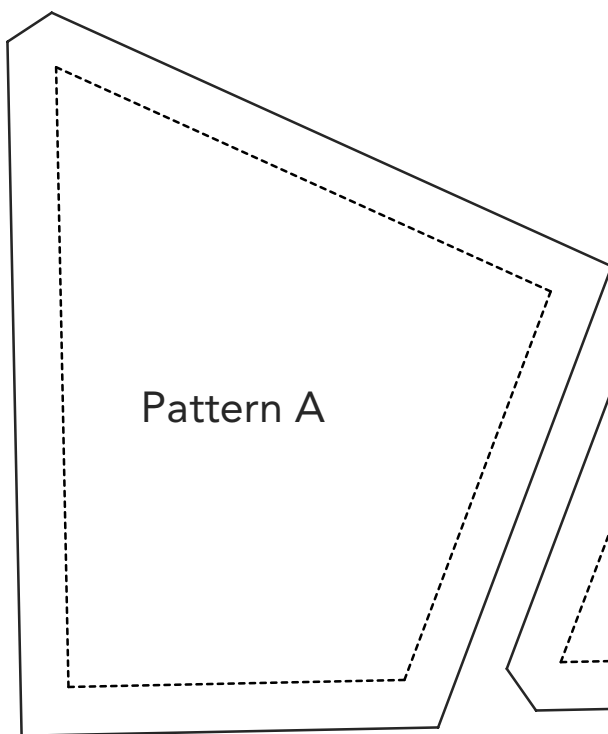
GO! Crazy Quilt - 6" Finished (55226)
Shape design copyright by AccuQuilt.
Used with permission.

This box should
measure 1".

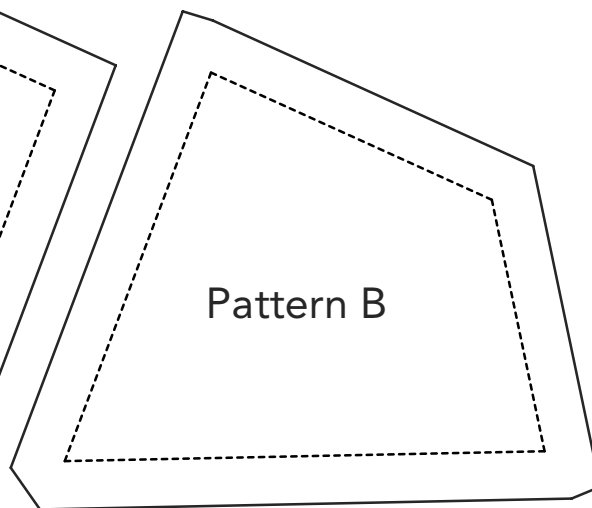
← 1" →

*** NOTE:**

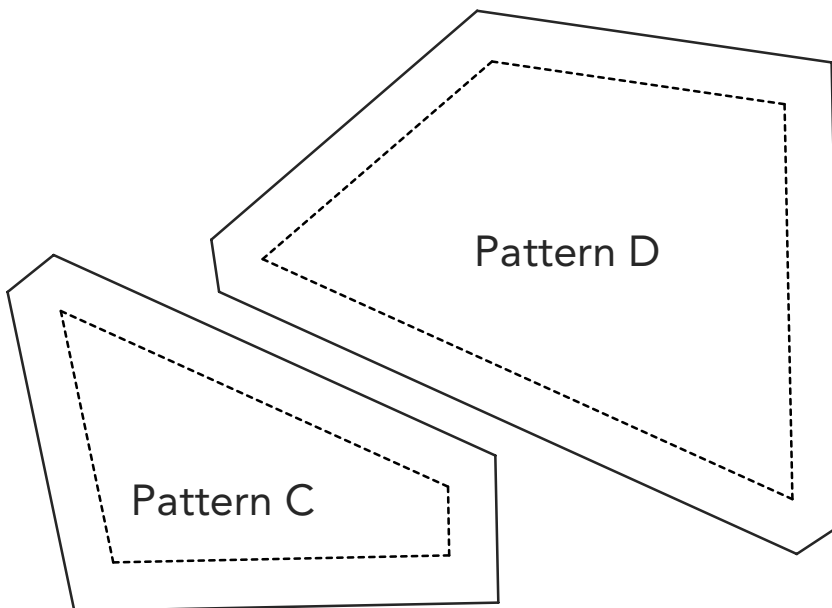
When printing a download-
able pdf, set Page Scaling
preference to NONE to print
patterns at 100%.
Do NOT "Shrink to Fit"
or "Fit to Printable Area."



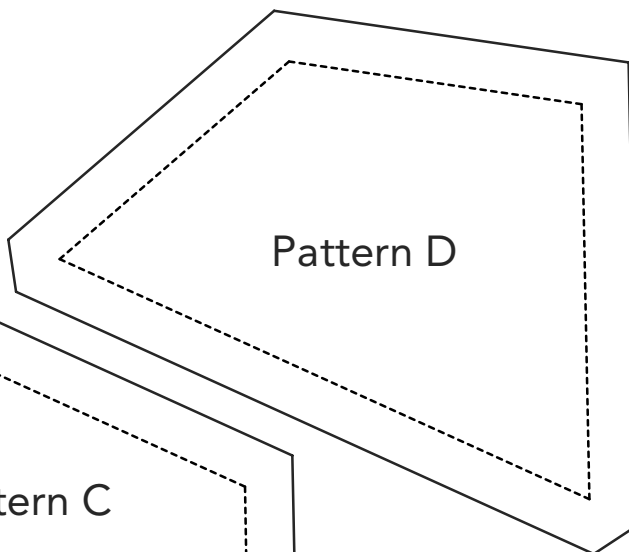
Pattern A



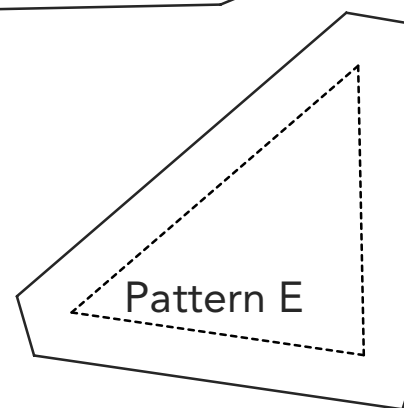
Pattern B



Pattern C



Pattern D



Pattern E

Project: Pillowcase with Crazy Quilt Band

