

PROJECT: Show-Off Wall Quilt

English paper piece elongated hexagons that show off large prints and striking machine-quilting.

INSPIRED BY: *All for One* from quilt collector Jody Sanders

QUILT TESTER: Diane Tomlinson



FABRICS are from the Niwa collection by P&B Textiles (pbtex.com).

FINISHED QUILT: 32½×46¾"

MATERIALS

Yardages and cutting instructions are based on 42" of usable fabric width.

- 2½ yards total assorted prints (quilt top)
- ½ yard black print (binding)
- 1⅝ yards backing fabric
- 41×55" batting
- Cardstock or sturdy paper
- Water-soluble glue stick

MAKE TEMPLATES

You will need a paper template for each elongated hexagon fabric piece.

To make paper templates, trace the Elongated Hexagon Pattern on *page 5* onto cardstock or sturdy paper 110 times. Carefully and accurately cut out paper templates on traced lines.

CUT FABRICS

Cut pieces in the following order.

From assorted prints, cut:

- 110 of Elongated Hexagon Pattern, adding a ⅜" seam allowance to each edge (To get the look of this quilt, cut 18 sets of 4 matching hexagons, 10 sets of 3 matching hexagons, and 4 sets of 2 matching hexagons.)

From black print, cut:

- 5–2½×42" binding strips

MAKE GLUE-BASTED HEXAGONS

1 Center an elongated hexagon paper template on wrong side of an elongated hexagon fabric piece. Place a small amount of water-soluble glue just inside one paper template edge (**Diagram 1**). Fold fabric seam allowance over template edge, finger-press, and hold so glue secures the fabric in place.

2 In the same manner, apply glue to an adjacent edge, fold fabric seam allowance over, and hold in place. Repeat gluing, folding, and holding with remaining edges to make a basted hexagon (**Diagram 2**).

3 Repeat steps 1 and 2 to make 110 basted hexagons total.

ENGLISH PAPER PIECE QUILT TOP

In English paper piecing, paper templates stabilize the fabric pieces, making it possible to work in any direction.

1 Using a design wall and referring to **Quilt Assembly Diagram**, lay out basted elongated hexagons in 13 alternating rows of eight or nine hexagons. Form diamond shapes in the quilt center with multiple sets of four matching hexagons. Position sets of three matching hexagons along the edges and sets of two matching hexagons in each corner.

2 Layer first two Row 1 basted hexagons with right sides together and a pair of edges aligned. Hold aligned edges together with your fingers or a clip.

3 Hand-sew aligned edges together from corner to corner using tiny whipstitches that catch a few threads of each fabric fold (**Diagram 3**). You'll feel the templates with your needle, but do not stitch through them. Backstitch at beginning and end of seam; knot thread.

4 Finger-press joined hexagons open (**Diagram 4**). Check seam from right side. If your stitches show, redo seam with smaller whipstitches.

5 In the same manner, join remaining Row 1 hexagons.

6 Repeat steps 2–4 to assemble 13 rows total. Offset rows as shown in **Quilt Assembly Diagram**.

7 Join rows, setting in seams as needed. To set in a piece, pin a pair of edges together and hand-sew. Reposition so next seam is aligned and repeat.

8 Remove paper templates. Along outer edges, open seam allowances and press flat.

9 Referring to **Diagram 5**, trim side edges even with raw edges of hexagons in adjacent rows. Trim top and bottom edges through horizontal center of hexagons to complete quilt top.

FINISH QUILT

1 Layer quilt top, batting, and backing; baste

2 Quilt as desired. Handi Quilter Studio Educator Kristina Whitney used gold metallic thread from Superior Threads to free-motion quilt S-shape swirls radiating from the center of each set of four matching hexagons (**Quilting Diagram**).

3 Bind with black print binding strips.

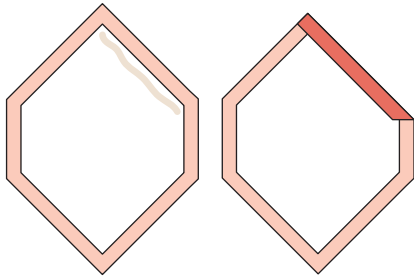


Diagram 1

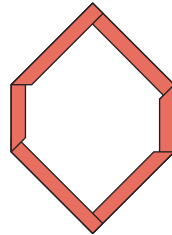


Diagram 2

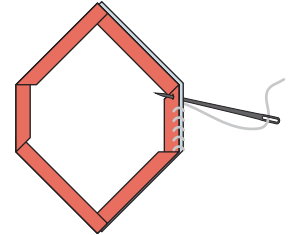


Diagram 3

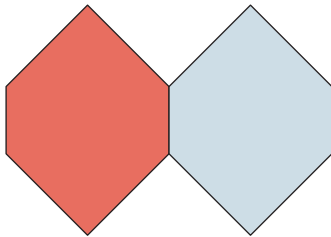


Diagram 4

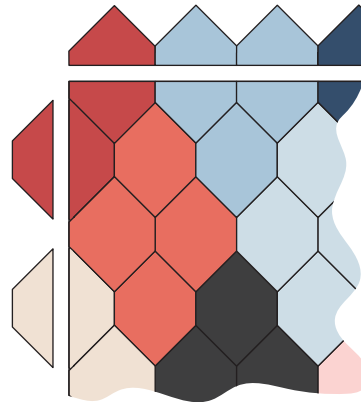
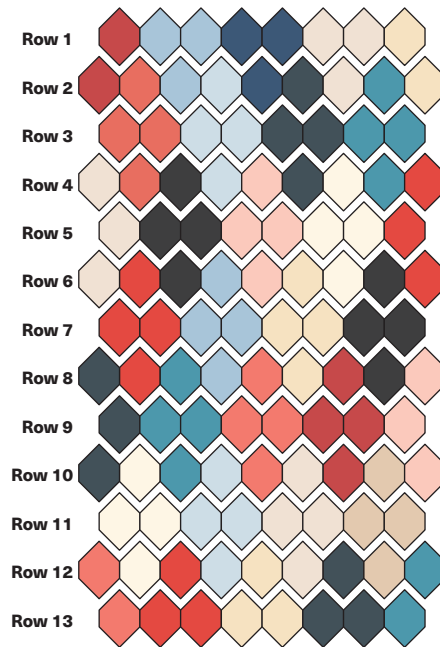
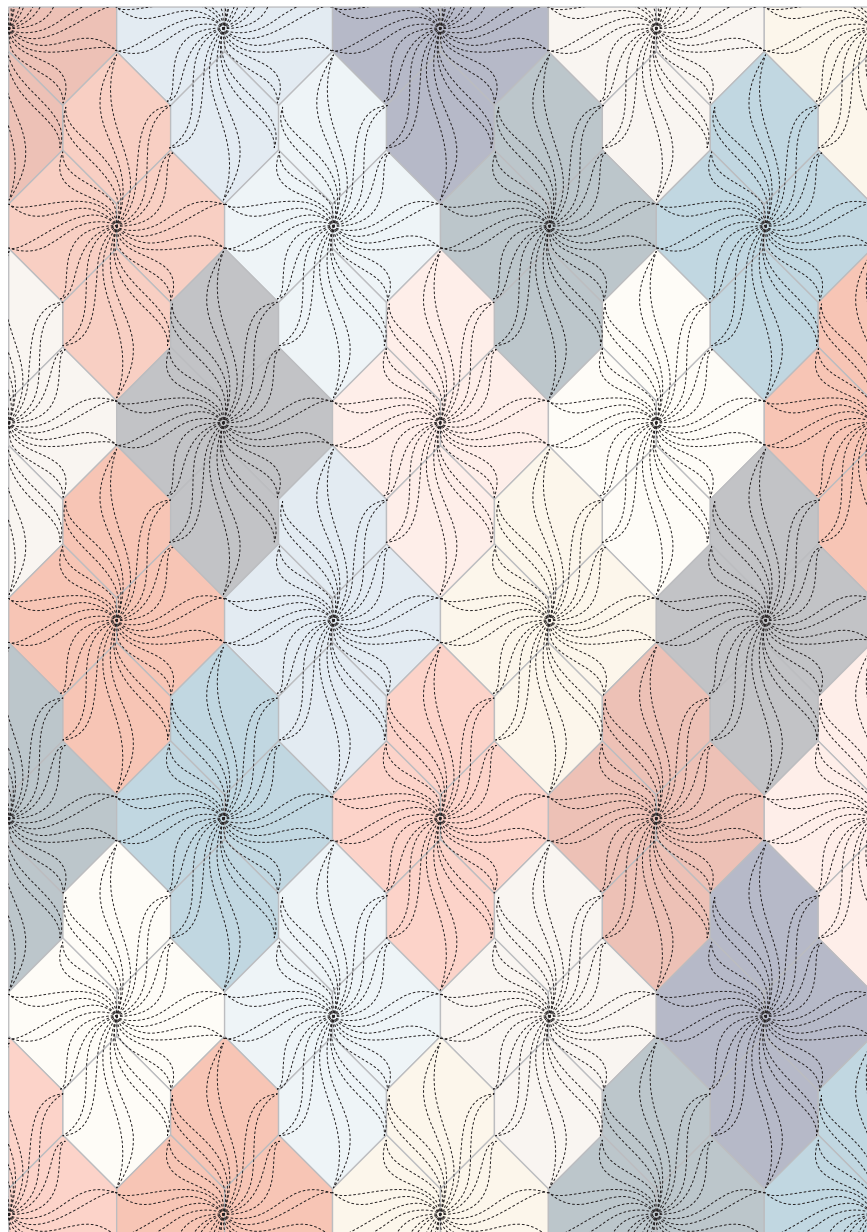


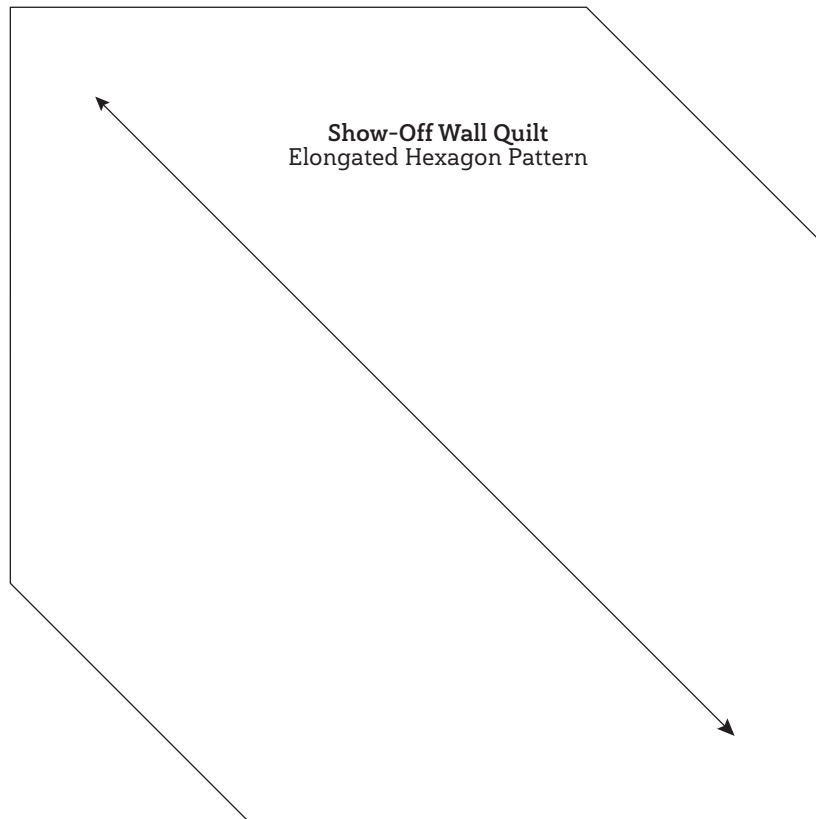
Diagram 5



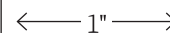
Quilt Assembly Diagram



Quilting Diagram



This box should
measure 1".



*** NOTE:**

When printing a
downloadable PDF, set Page
Scaling preference to None
to print patterns at 100%. Do
not use Shrink to Fit or Fit to
Printable Area.