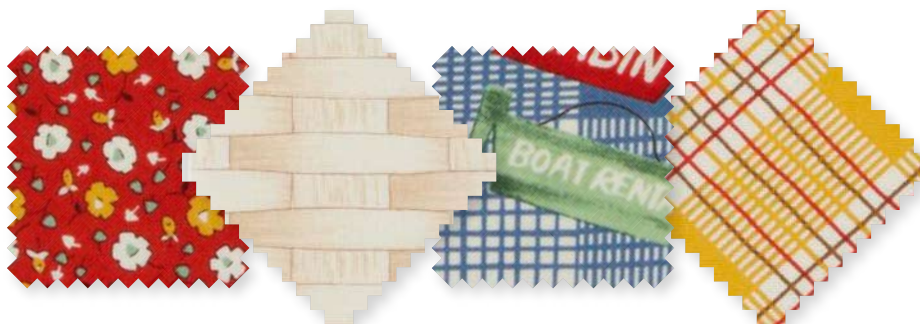


Project: Friendship Star Log Cabins

INSPIRED BY "LOG CABIN STARS" FROM DESIGNER FLAVIN GLOVER
QUILTMAKER: LAURA BOEHNKE



The vivid red points jump off the quilt while the muted gold points recede to form a single Friendship Star. A four-in-one print from the Happy Campers collection by American Jane for Moda Fabrics provided a fussy-cut middle border featuring the ABCs.

Project: Friendship Star Log Cabins

Materials

- 8" square gold print (block centers)
- $\frac{1}{4}$ yard total assorted red prints (blocks A, C, and D)
- $\frac{1}{3}$ yard cream print (blocks A, B, and E)
- $\frac{1}{4}$ yard total assorted yellow prints (Block B)
- $\frac{1}{6}$ yard light blue floral (Block C)
- $\frac{7}{8}$ yard blue dot (Block D, inner and outer borders, binding)
- $\frac{1}{6}$ yard blue plaid (Block F)
- $\frac{1}{6}$ yard dark blue print (Block F)
- $\frac{1}{4}$ yard alphabet print* (middle border)

*The featured quilt uses yellow print and red multiprint panels that are separated into four sections by a strip of alphabet print that runs parallel to the selvages. If using these particular fabrics, you will need $\frac{1}{2}$ yard *each* of red print and yellow print.

- $1\frac{1}{6}$ yards backing fabric
- 37" square batting

Finished quilt: 30 $\frac{1}{4}$ " square

Finished blocks: 5 $\frac{1}{4}$ " square

Quantities are for 44/45"-wide, 100% cotton fabrics.

Measurements include $\frac{1}{4}$ " seam allowances. Sew with right sides together unless otherwise stated.

Cut Fabrics

Cut pieces in the following order. For easy piecing, sort pieces into separate bags according to position number (1-7).

From gold print, cut:

- 24—1 $\frac{1}{4}$ " squares for positions 1 and 2

From assorted red prints, cut:

- 8—1 $\frac{1}{4}$ ×5 $\frac{3}{4}$ " rectangles for position 7
- 16—1 $\frac{1}{4}$ ×4 $\frac{1}{4}$ " rectangles for positions 5 and 6
- 16—1 $\frac{1}{4}$ ×2 $\frac{3}{4}$ " rectangles for positions 3 and 4
- 8—1 $\frac{1}{4}$ " squares for position 2

From cream print, cut:

- 12—1 $\frac{1}{4}$ ×5 $\frac{3}{4}$ " rectangles for position 7
- 24—1 $\frac{1}{4}$ ×4 $\frac{1}{4}$ " rectangles for positions 5 and 6
- 24—1 $\frac{1}{4}$ ×2 $\frac{3}{4}$ " rectangles for positions 3 and 4
- 10—1 $\frac{1}{4}$ " squares for positions 1 and 2

From assorted yellow prints, cut:

- 4—1 $\frac{1}{4}$ ×5 $\frac{3}{4}$ " rectangles for position 7
- 8—1 $\frac{1}{4}$ ×4 $\frac{1}{4}$ " rectangles for positions 5 and 6
- 8—1 $\frac{1}{4}$ ×2 $\frac{3}{4}$ " rectangles for positions 3 and 4
- 4—1 $\frac{1}{4}$ " squares for position 2

From light blue floral, cut:

- 2—1 $\frac{1}{4}$ ×5 $\frac{3}{4}$ " rectangles for position 7
- 4—1 $\frac{1}{4}$ ×4 $\frac{1}{4}$ " rectangles for positions 5 and 6
- 4—1 $\frac{1}{4}$ ×2 $\frac{3}{4}$ " rectangles for positions 3 and 4
- 2—1 $\frac{1}{4}$ " squares for position 2

From blue dot, cut:

- 4—2 $\frac{1}{2}$ ×42" binding strips
- 2—2×30 $\frac{1}{4}$ " outer border strips
- 2—2×27 $\frac{1}{4}$ " outer border strips
- 2—2×25 $\frac{1}{4}$ " inner border strips
- 2—2×22 $\frac{1}{4}$ " inner border strips
- 2—1 $\frac{1}{4}$ ×5 $\frac{3}{4}$ " rectangles for position 7
- 4—1 $\frac{1}{4}$ ×4 $\frac{1}{4}$ " rectangles for positions 5 and 6
- 4—1 $\frac{1}{4}$ ×2 $\frac{3}{4}$ " rectangles for positions 3 and 4
- 2—1 $\frac{1}{4}$ " squares for position 2

From blue plaid, cut:

- 8—1 $\frac{1}{4}$ ×4 $\frac{1}{4}$ " rectangles for position 5
- 16—1 $\frac{1}{4}$ ×2 $\frac{3}{4}$ " rectangles for positions 3 and 4
- 4—1 $\frac{1}{4}$ " squares for position 1

From dark blue print, cut:

- 8—1 $\frac{1}{4}$ ×5 $\frac{3}{4}$ " rectangles for position 7
- 8—1 $\frac{1}{4}$ ×4 $\frac{1}{4}$ " rectangles for position 6

From alphabet print, cut and piece enough 1 $\frac{1}{2}$ "-wide strips to make:

- 2—1 $\frac{1}{2}$ ×27 $\frac{1}{4}$ " middle border strips
- 2—1 $\frac{1}{2}$ ×25 $\frac{1}{4}$ " middle border strips

Assemble Log Cabin Block A

1. For Block A, gather one each of the following pieces: gold print position 1 square for block center; assorted red print position 2 square and positions 3, 4, 5, 6, and 7 rectangles; and cream print position 2 square and positions 3, 4, 5, 6, and 7 rectangles.
2. Referring to **Diagram 1**, sew red print and cream print position 2 squares to opposite edges of gold print position 1 block center; press seams away from block center.
3. Add red print and cream print position 3 rectangles to long edges of Step 2 unit (**Diagram 2**). Press seams away from block center.
4. Referring to **Diagram 3**, continue adding rectangles in numerical order to make Log Cabin Block A. Press all seams away from block center. The block should be 5 $\frac{3}{4}$ " square including seam allowances.
5. Repeat steps 1-4 to make four total of Log Cabin Block A.

Project: Friendship Star Log Cabins

Assemble Log Cabin Block B

1. For Block B, gather one each of the following pieces: gold print position 1 square for block center; cream print position 2 square and positions 3, 4, 5, 6, and 7 rectangles; and assorted yellow print position 2 square and positions 3, 4, 5, 6, and 7 rectangles.
2. Using pieces from Step 1, refer to **Diagram 4** and Assemble Block A, steps 2-4, to make a Log Cabin Block B.
3. Repeat steps 1 and 2 to make four total of Log Cabin Block B.

Assemble Log Cabin Block C

1. For Block C, gather one each of the following pieces: gold print position 1 square for block center; assorted red print position 2 square and positions 3, 4, 5, 6, and 7 rectangles; and light blue floral position 2 square and positions 3, 4, 5, 6, and 7 rectangles.
2. Using pieces from Step 1, refer to **Diagram 5** and Assemble Block A, steps 2-4, to make a Log Cabin Block C.
3. Repeat steps 1 and 2 to make a second Log Cabin Block C.

Assemble Log Cabin Block D

1. For Block D, gather one each of the following pieces: gold print position 1 square for block center; assorted red print position 2 square and positions 3, 4, 5, 6, and 7 rectangles; and blue dot position 2 square and positions 3, 4, 5, 6, and 7 rectangles.

2. Using pieces from Step 1, refer to **Diagram 6** and Assemble Block A, steps 2-4, to make a Log Cabin Block D.
3. Repeat steps 1 and 2 to make a second Log Cabin Block D.

Assemble Remaining Log Cabin Blocks and Setting Triangles

1. For Block E, gather one cream print position 1 square for block center and two each of the following pieces: gold print position 2 squares; and cream print positions 3, 4, 5, 6, and 7 rectangles.
2. Using pieces from Step 1, refer to **Diagram 7** and Assemble Block A, steps 2-4, to make a Log Cabin Block E.
3. Repeat steps 1 and 2 to make a second Log Cabin Block E.
4. Referring to **Diagram 8**, cut a Log Cabin Block E in half diagonally to make two E Setting Triangles. Repeat to make four E Setting Triangles total.

5. For Block F, gather one blue plaid position 1 square for block center, and two each of the following pieces: blue plaid positions 3, 4, and 5 rectangles; gold print position 2 squares; and navy blue print positions 6 and 7 rectangles.

6. Using pieces from Step 5, refer to **Diagram 9** and Assemble Block A, steps 2-4, to make a Log Cabin Block F.
7. Repeat steps 5 and 6 to make four total of Log Cabin Block F.

8. Referring to **Diagram 9**, cut each Log Cabin Block F in half diagonally to make eight F Setting Triangles total.

Assemble Quilt Center

1. Referring to **Quilt Assembly Diagram** for placement, lay out all blocks and setting triangles in diagonal rows, rotating blocks as shown.
2. Sew together pieces in each diagonal row. (Where each setting triangle joins a Log Cabin block, match up a straight edge of the setting triangle with the block; in this quilt, the point of the setting triangle does not extend beyond the edge of the block.) Press seams in one direction, alternating direction with each row.
3. Join rows to complete quilt center. Press all seams toward bottom right-hand corner. Trim points of Log Cabin blocks that extend beyond edges of setting triangles. The quilt center should be $22\frac{1}{4}$ " square including seam allowances.

Add Borders

1. Sew blue dot $2 \times 22\frac{1}{4}$ " inner border strips to opposite edges of quilt center. Add blue dot $2 \times 25\frac{1}{4}$ " inner border strips to remaining edges. Press all seams toward inner border.
2. Sew short alphabet print middle border strips to opposite edges of quilt center. Add long alphabet print middle border strips to remaining edges. Press all seams toward inner border.

Project: Friendship Star Log Cabins

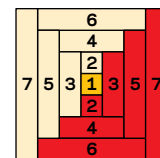
- Sew blue dot $2 \times 27\frac{1}{4}$ " outer border strips to opposite edges of quilt center. Add blue dot $2 \times 30\frac{1}{4}$ " outer border strips to remaining edges to complete quilt top. Press all seams toward outer border.



DIAGRAM 1



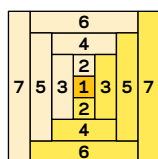
DIAGRAM 2



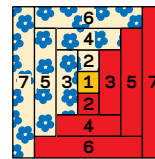
BLOCK A
DIAGRAM 3

Finish Quilt

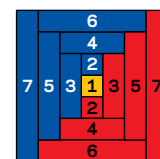
- Layer quilt top, batting, and backing; baste. Quilt as desired.
- Bind with blue dot binding strips.



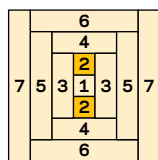
BLOCK B
DIAGRAM 4



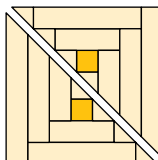
BLOCK C
DIAGRAM 5



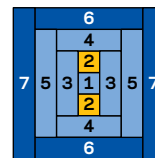
BLOCK D
DIAGRAM 6



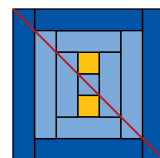
BLOCK E
DIAGRAM 7



E SETTING TRIANGLES
DIAGRAM 8

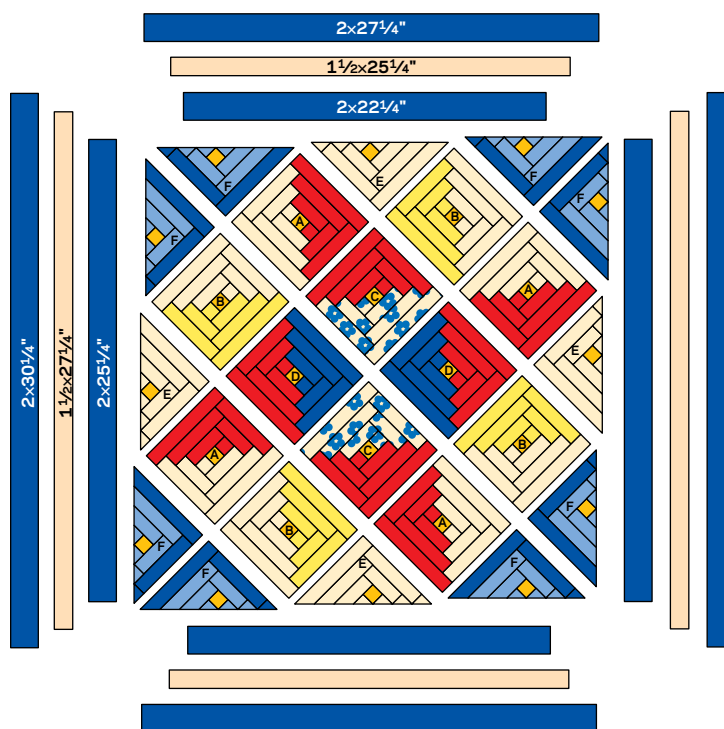


BLOCK F



F SETTING TRIANGLES

DIAGRAM 9



QUILT ASSEMBLY DIAGRAM