

PATTERN
BROUGHT
TO YOU BY:

Quilts & more™

allpeoplequilt.com

PROJECT: Bright Bloom Pincushion

Practice your embroidery with a flower pincushion featuring both machine- and hand-stitched embellishments.

INSPIRED BY: *Bright Blooms* from designer Kim Schaefer (littlequiltcompany.com)

PROJECT TESTER: Martha Gamm



FABRICS are from various Tonga batik collections by Timeless Treasures Fabrics (ttfabrics.com).

PROJECT: Bright Bloom Pincushion

PINCUSHION

Finished size: 6×7×2"

Finished block: 6×7"

MATERIALS

Yardages and cutting instructions are based on 42" of usable fabric width.

- ❑ 5" square each red, yellow, orange, and green batik (appliqué)
- ❑ ¼ yard blue batik (pincushion)
- ❑ Lightweight iron-on fusible web
- ❑ Perle cotton or embroidery floss (optional)
- ❑ Polyester fiberfill

CUT FABRICS

Cut pieces in the following order.

Patterns are on *page 4*. To use fusible web for appliquéing, complete the following steps.

- 1) Lay fusible web, paper side up, over patterns. Use a pencil to trace each pattern once, leaving ¼" between tracings. Cut out each fusible-web shape roughly ⅛" outside traced lines.
- 2) Following manufacturer's instructions, press each fusible-web shape onto designated fabric; let cool. Cut out shapes on drawn lines. Peel off paper backings.

From red batik, cut:

- 1 of Pattern A

From yellow batik, cut:

- 1 of Pattern B

From orange batik, cut:

- 1 of Pattern C

From green batik, cut:

- 1 each of patterns D, E, and F

From blue batik, cut:

- 2—6½×7½" rectangles
- 2—2×8" rectangles
- 2—2×7" rectangles

APPLIQUÉ AND EMBROIDER FLOWER BLOCK

To embellish the flower block, project tester Martha Gamm used a variety of hand-embroidery stitches and decorative machine stitches.

- 1) Referring to **Appliqué Placement Diagram**, position prepared appliqué pieces on a blue batik 6½×7½" rectangle, layering pieces as shown. Fuse pieces in place following manufacturer's instructions.
- 2) Stitch appliqué pieces in place; embellish using machine and/or hand stitches. Experiment with your own stitches or, to duplicate the project as shown, trace the Full-Size Embroidery Diagram on *page 5*.
- 3) Referring to **Appliqué Placement Diagram**, mark a small dot in each corner of appliqué rectangle a scant ¼" from edges.

ASSEMBLE PINCUSHION

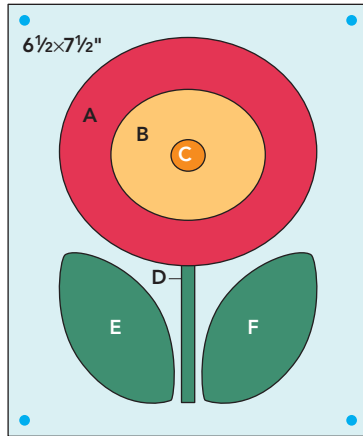
Measurements include ¼" seam allowances. Sew with right sides together unless otherwise stated.

Press seams in directions indicated by arrows on diagrams. If no direction is specified, press seam toward darker fabric.

- 1) On wrong side of blue batik 2×8" and 2×7" rectangles, mark a small dot in each corner ¼" from edges (**Diagram 1**). Use sharp scissors to clip into seam allowance of each rectangle at marked dots.
- 2) Sew together Step 1 rectangles in a row. Press seams open to make a side unit. The side unit should be 2×28½" including seam allowances.

- 3) Fold side unit in half crosswise. Sew short ends together (**Diagram 2**). Press seam open.
- 4) Lay Step 3 unit atop appliqué rectangle; match dots along one edge (**Diagram 3**). Sew between dots, beginning and ending with a backstitch. Repeat to join remaining edges.
- 5) On wrong side of remaining blue batik 6½×7½" rectangle, mark a dot in each corner ¼" from edges.
- 6) Lay marked blue batik 6½×7½" rectangle atop Step 4 unit; match dots along one edge (**Diagram 4**). Sew between dots, beginning and ending with a backstitch. Repeat with remaining edges, leaving a 2" opening in one edge, to make pincushion cover.
- 7) Turn pincushion cover right side out. Push polyester fiberfill through opening to firmly stuff cover. Hand-sew opening closed to complete pincushion.

PROJECT: Bright Bloom Pincushion



APPLIQUÉ PLACEMENT DIAGRAM

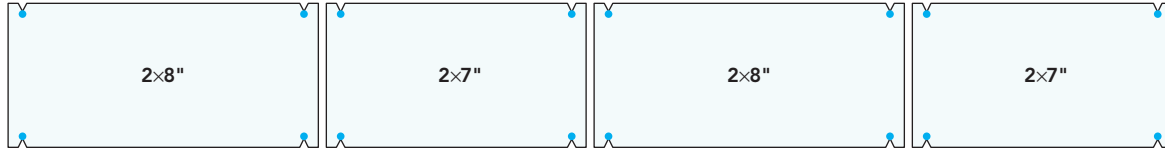


DIAGRAM 1

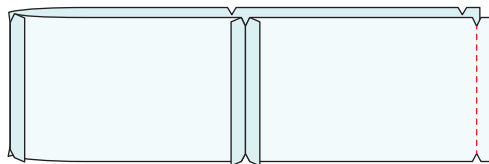


DIAGRAM 2

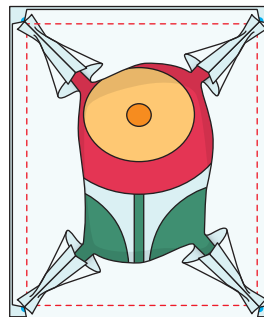


DIAGRAM 3

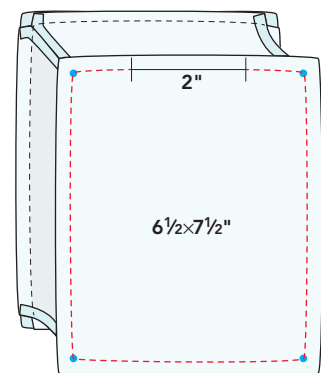


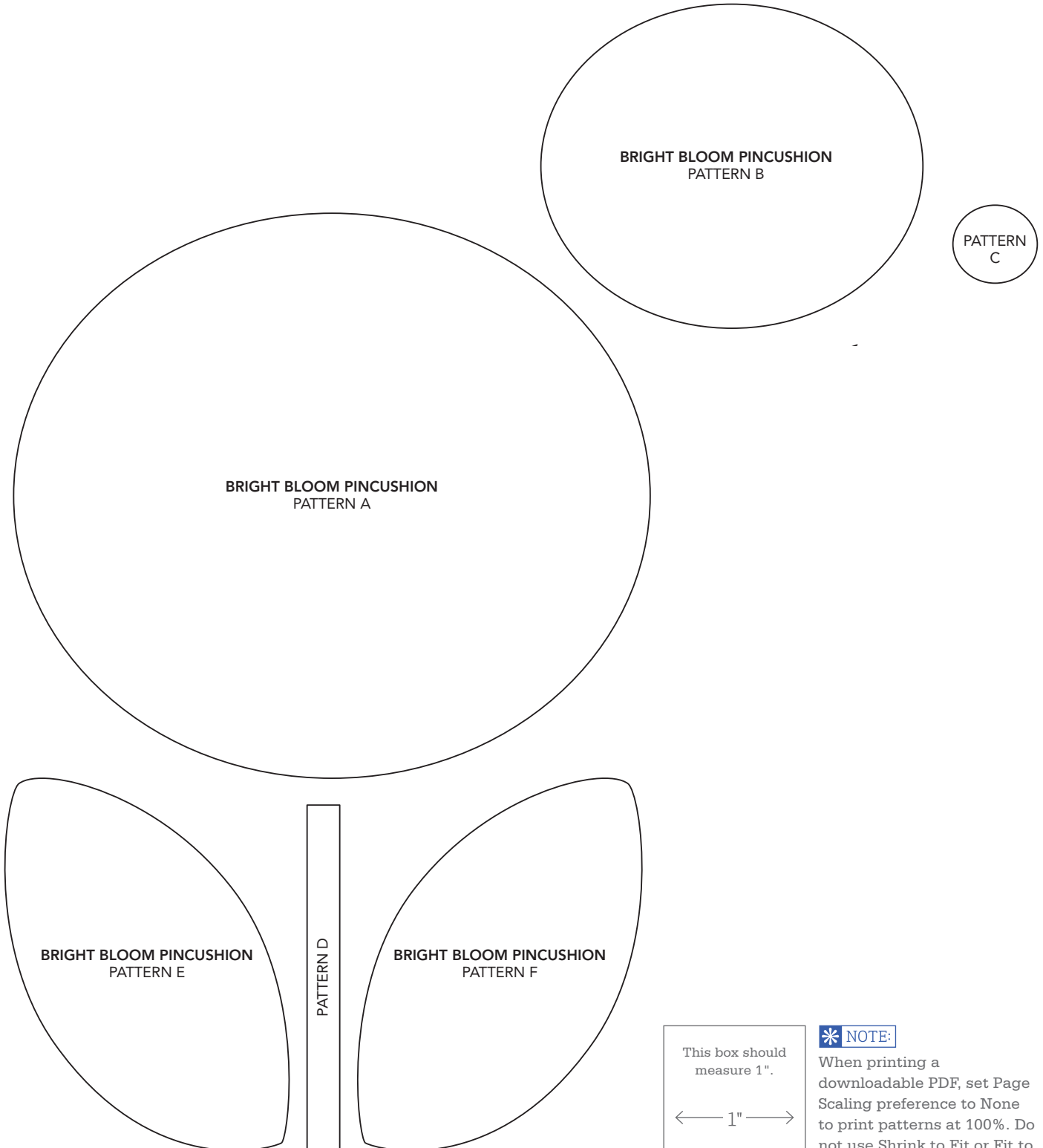
DIAGRAM 4

PATTERN
BROUGHT
TO YOU BY:

Quilts & more™

allpeoplequilt.com

PROJECT: Bright Bloom Pincushion

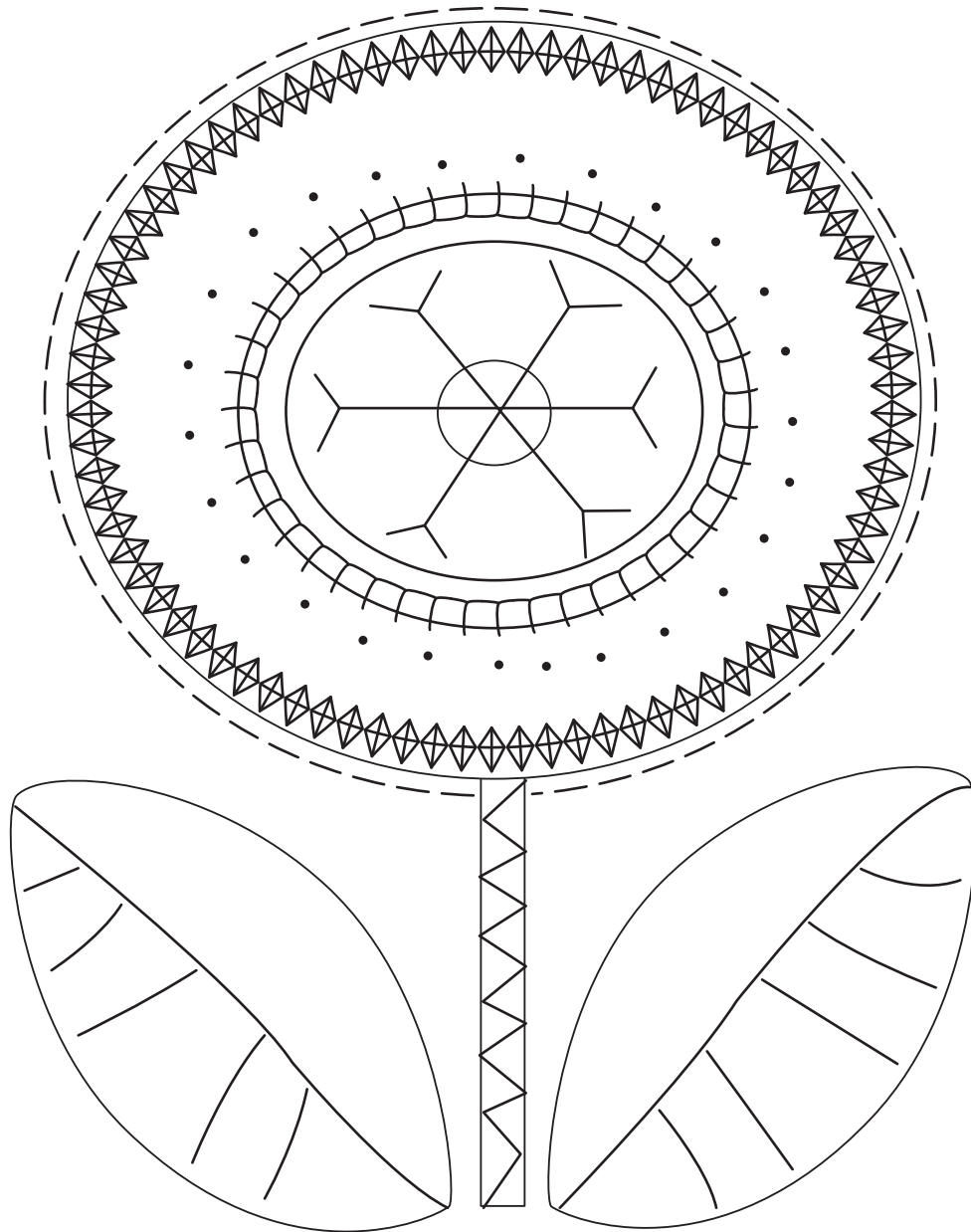


PATTERN
BROUGHT
TO YOU BY:

Quilts & more

allpeoplequilt.com

PROJECT: Bright Blooms Pincushion



BRIGHT BLOOM PINCUSHION
FULL-SIZE EMBROIDERY DIAGRAM