

PATTERN
BROUGHT
TO YOU BY:

AMERICAN
PATCHWORK &
quilting[®]

allpeoplequilt.com

PROJECT: Spring to Life Tote

Personalize a purchased reusable carryall by machine-appliquéing whimsical shapes on one side.

INSPIRED BY: *The Birds & the Bee* from designer Kim Schaefer of Little Quilt Company (littlequiltcompany.com)

PROJECT TESTER: Diane Tomlinson



FABRICS are from the Bee Basics collection by Lori Holt for Riley Blake Designs (rileyblakedesigns.com).

PROJECT: Spring to Life Tote

MATERIALS

Yardages and cutting instructions are based on 42" of usable fabric width.

- 3x11" piece dark green print (stem and leaf accent appliqués)
- 5" square yellow print (tulip appliqué)
- 3x6" piece light green print (leaf appliqués)
- 5" square *each* aqua print and coral print (bird body appliqués)
- Scrap of orange print (bird beak appliqués)
- 3x6" piece solid white (bird eye appliqués)
- 3" square each light blue print and pink print (bird wing appliqués)
- 4x8" piece dark blue print (bird feather and bird tail appliqués)
- 16" square canvas tote
- 1/3 yard 17"-wide lightweight fusible web
- Perle cotton No. 8: orange, yellow, green, and brown

CUT FABRICS

Cut pieces in the following order.

Patterns are on page 4. To use fusible web for appliquéing, complete the following steps.

- 1.** Lay fusible web, paper side up, over patterns. Use a pencil to trace each pattern the number of times indicated in cutting instructions, leaving 1/4" between tracings. Cut out each fusible-web shape roughly 1/8" outside traced lines.
- 2.** Following manufacturer's instructions, press each fusible-web shape onto designated fabric; let cool. Cut out shapes on drawn lines. Peel off paper backings.

From dark green print, cut:

- 1 each of patterns A, D, and D reversed

From yellow print, cut:

- 1 of Pattern B

From light green print, cut:

- 2 of Pattern C

From aqua print, cut:

- 1 of Pattern E

From coral print, cut:

- 1 of Pattern E reversed

From orange print, cut:

- 1 each of patterns F and F reversed

From solid white, cut:

- 2 of Pattern G

From light blue print, cut:

- 1 of Pattern H

From pink print, cut:

- 1 of Pattern H reversed

From dark blue print, cut:

- 1 each of patterns I, J, and K

APPLIQUÉ AND EMBROIDER TOTE

For stitch instructions, refer to diagrams on page 3. Use one strand of perle cotton No. 8 for embroidery.

1 Referring to **Appliqué Placement**

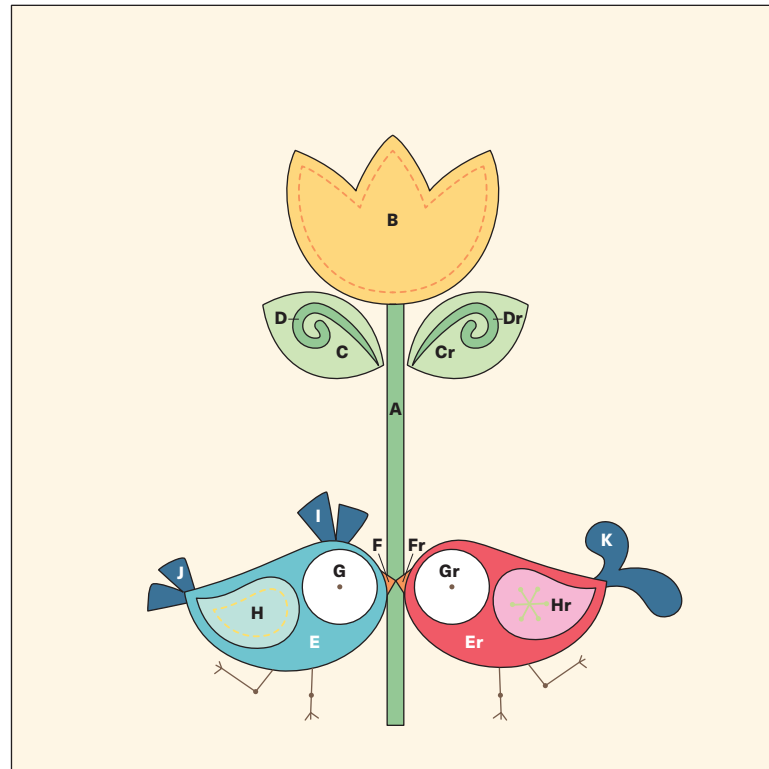
Diagram, center appliqué shapes on tote, making sure pieces are at least 1" from edges. Fuse pieces in place following manufacturer's instructions.

2. Using thread in colors that match appliqués, machine-zigzag-stitch appliqués in place.

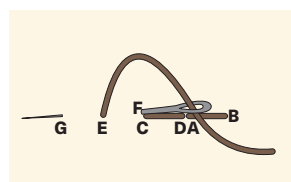
3. Referring to **Appliqué Placement**

Diagram, use orange perle cotton to add a running stitch just inside edges of B tulip. Use yellow perle cotton to add a running stitch just inside blue bird wing. In pink bird wing use green perle cotton to make a star stitch and to add a French knot at the end of each star point. Use brown perle cotton to backstitch bird legs and to add French knots for bird knees and pupils.

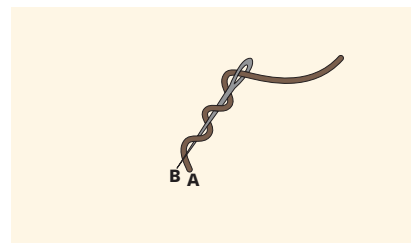
PROJECT: Spring to Life Tote



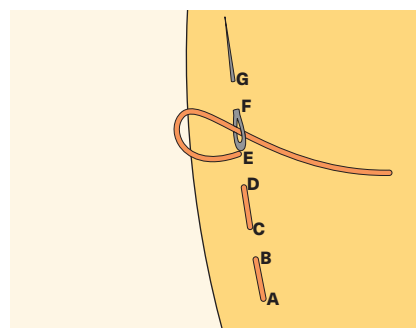
Appliqué Placement Diagram



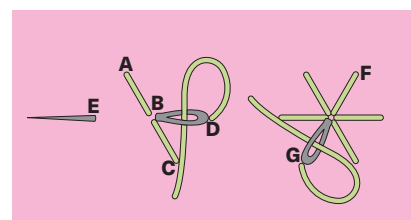
Backstitch Diagram



French Knot Stitch Diagram



Running Stitch Diagram

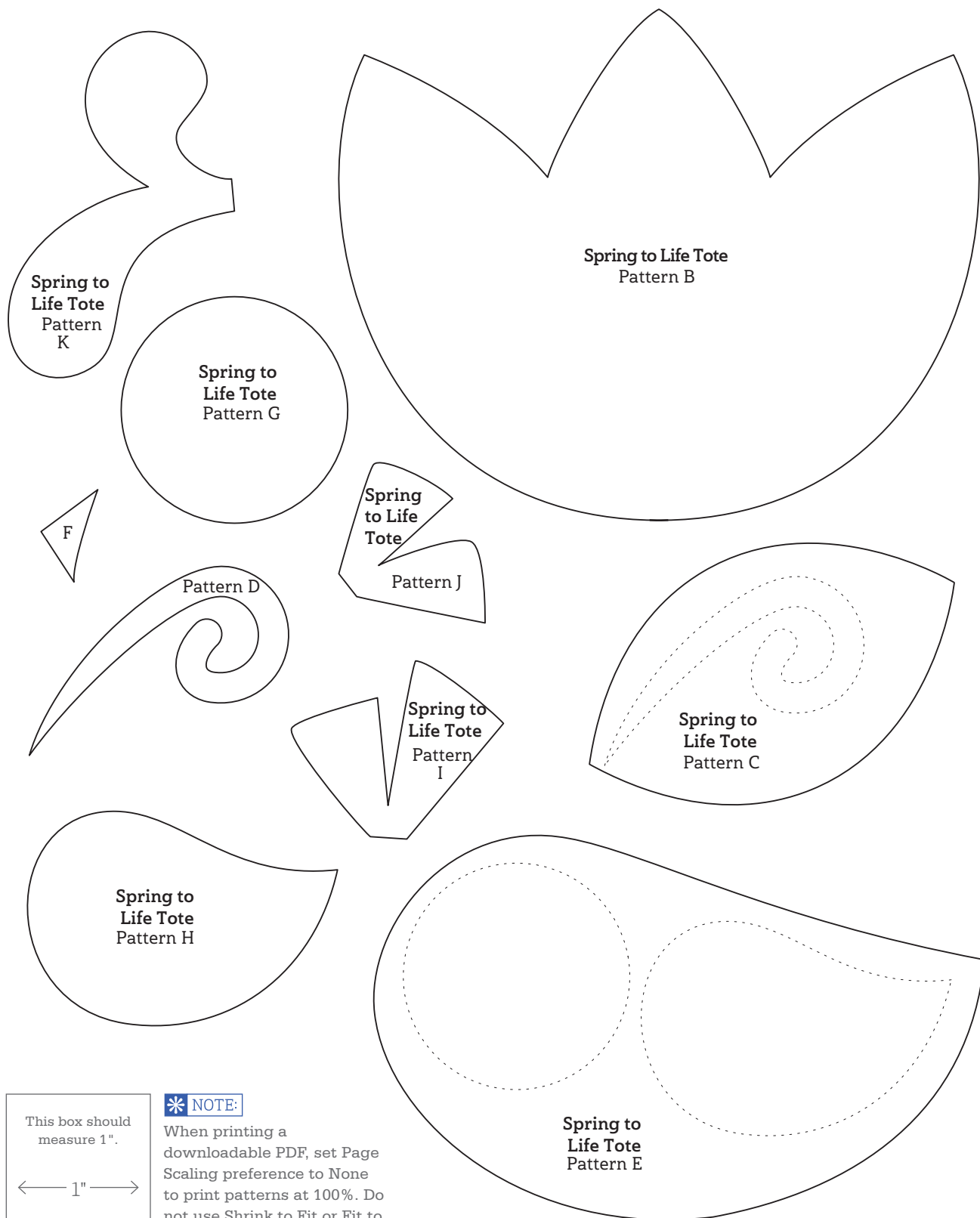


Star Stitch Diagram

**PATTERN
BROUGHT
TO YOU BY:**

AMERICAN
PATCHWORK &
quilting[®]

PROJECT: Spring to Life Tote



Spring to Life Tote
Pattern A

This box should
measure 1".

← 1" →

* NOTE:

When printing a
downloadable PDF, set Page
Scaling preference to None
to print patterns at 100%. Do
not use Shrink to Fit or Fit to
Printable Area.