



# So Many Squares

Designer Sarah Maxwell and Dolores Smith of Homestead Hearth ([homesteadhearth.com](http://homesteadhearth.com))



What's better than squares? How about squares that form squares! In this quilt, a plethora of 1800s reproduction prints unite in a king-size Square-in-a-Square design.

## materials

- ▶ 2½ yards total assorted tan prints (quilt top)
- ▶ 2½ yards total assorted cream prints (quilt top)
- ▶ 3 yards total assorted red prints (quilt top)

- ▶ 7 yards total assorted dark prints in black, blue, gold, and brown (quilt top)
- ▶ 7⁄8 yard brown print (binding)
- ▶ 10 yards backing fabric
- ▶ 119" square batting

**Finished quilt:** 110¾" square (king-size with 17" drop)

**Yardages and cutting instructions** are based on 42" of usable fabric width.

**Measurements include ¼"** seam allowances. Sew with right sides together unless otherwise stated.

## cut fabrics

Cut pieces in the following order.

### From assorted tan prints, cut:

- ▶ 144—2¾" squares

### From assorted cream prints and remaining assorted tan prints, cut:

- ▶ 576—2¾" squares

### From assorted red prints, cut:

- ▶ 121—2¾" squares

### From assorted dark prints and remaining assorted red prints, cut:

- ▶ 1,560—2¾" squares

### From brown print, cut:

- ▶ 11—2½×42" binding strips

## ABOUT THE Quilt

Designer Sarah Maxwell used more than 150 fabrics, pulling from her collection of reproduction print fat quarters, for *So Many Squares*.

From each fat quarter she cut two or three 2¾"-

wide strips, then cut the strips into 2¾" squares, which created 14 to 21 squares per fat quarter. (For a less scrappy quilt, cut five or six 2¾"-wide strips from each fat quarter.) Sarah stashed the

fat quarter remainders to use in other projects.

Before stitching, she laid out all rows to make sure no print was next to itself.

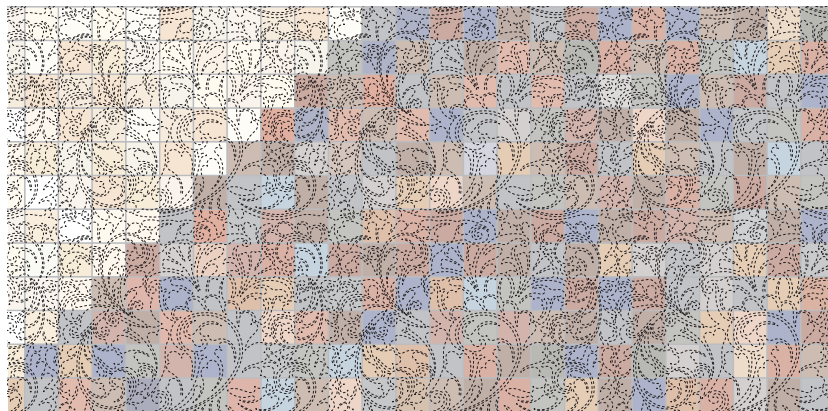


QUILT ASSEMBLY DIAGRAM

## assemble quilt top

**1.** Referring to **Quilt Assembly Diagram** for color placement, lay out assorted print  $2\frac{3}{4}$ " squares in 49 horizontal rows of 49 squares each. In the featured quilt, tan and cream prints form the outer diamond, tan prints form the inner diamond, and red prints form the center square. Assorted dark and red prints fill the remaining areas.

**2.** Sew together squares in each row. Press seams in one direction, alternating direction with each row. Join rows to complete quilt top. Press seams in one direction.



QUILTING DIAGRAM

## finish quilt

**1.** Layer quilt top, batting, and backing; baste.

**2.** Quilt as desired. Connie Gresham machine-quilted an all-over paisley

design across the quilt top (**Quilting Diagram**).

**3.** Bind with brown print binding strips.