

PATTERN  
BROUGHT  
TO YOU BY:

# Quilts & more™

[allpeoplequilt.com](http://allpeoplequilt.com)

---

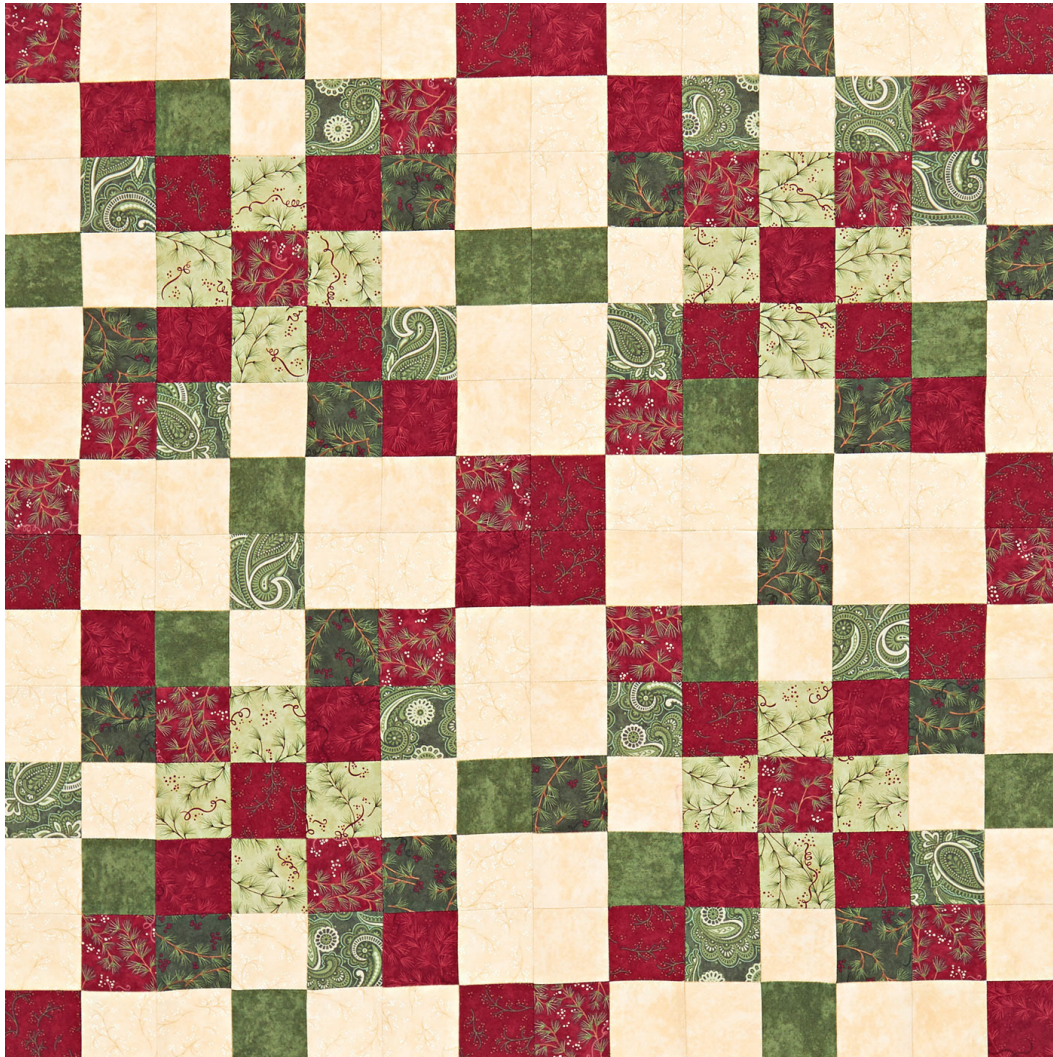
## PROJECT: Traditional Holiday Table Topper

---

Sew a fast and festive table topper using scraps of traditional holiday fabrics.

INSPIRED BY: *Square Dancing* from designer Stephanie Luiere

QUILT TESTER: Martha Gamm



**FABRICS** are from the Once Upon a Memory collection by Holly Taylor for Moda Fabrics ([modafabrics.com](http://modafabrics.com)).

## PROJECT: Traditional Holiday Table Topper

### QUILT

Finished size: 28" square  
Finished block: 14" square

### MATERIALS

Yardages and cutting instructions are based on 42" of usable fabric width.

- ❑ 3/8 yard total assorted red prints (Four-Patch and Nine-Patch units)
- ❑ 1/2 yard cream print (Four-Patch, Six-Patch, and Nine-Patch units)
- ❑ 1/3 yard total assorted green prints (Six-Patch units)
- ❑ 1/8 yard light green print (Nine-Patch units)
- ❑ 1/4 yard binding fabric
- ❑ 1 1/8 yards backing fabric
- ❑ 37"-square batting

### CUT FABRICS

Cut pieces in the following order.

#### From assorted red prints, cut:

- 52—2 1/2" squares

#### From cream print, cut:

- 80—2 1/2" squares

#### From assorted green print, cut:

- 48—2 1/2" squares

#### From light green print, cut:

- 16—2 1/2" squares

#### From binding, cut:

- 2—2 1/2×42" binding strips

### ASSEMBLE BLOCKS

Measurements include 1/4" seam allowances. Sew with right sides together unless otherwise stated.

Press seams in directions indicated by arrows on diagrams. If no direction is specified, press seam toward darker fabric.

- 1) Referring to **Diagram 1**, sew together two assorted red print 2 1/2" squares and two cream print 2 1/2" squares in

pairs. Join pairs to make a Four-Patch unit. The unit should be 4 1/2" square including seam allowances. Repeat to make 16 Four-Patch units total.

- 2) Referring to **Diagram 2**, sew together three assorted green print 2 1/2" squares and three cream print 2 1/2" squares in two rows. Join rows to make a Six-Patch unit. The unit should be 4 1/2×6 1/2" including seam allowances. Repeat to make 16 Six-Patch units total.
- 3) Referring to **Diagram 3**, sew together five assorted red print 2 1/2" squares and four light green print 2 1/2" squares in three rows. Join rows to make a Nine-Patch unit. The unit should be 6 1/2" square including seam allowances. Repeat to make four Nine-Patch units total.
- 4) Referring to **Diagram 4**, lay out four Four-Patch units, four Six-Patch units, and one Nine-Patch unit in three rows. Sew together units in rows. Join rows to make a block. The block should be 14 1/2" square including seam allowances. Repeat to make four blocks total.

### ASSEMBLE QUILT TOP

- 1) Referring to **Quilt Assembly Diagram**, lay out blocks in two rows.
- 2) Sew together blocks in rows. Press seams in opposite directions.
- 3) Join rows to complete quilt top. Press seams in one direction.

### FINISH QUILT

- 1) Layer quilt top, batting, and backing; baste. Quilt as desired.
- 2) Bind with binding strips.

## PROJECT: Traditional Holiday Table Topper

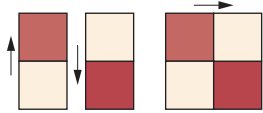


DIAGRAM 1

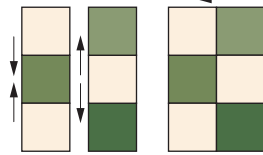


DIAGRAM 2

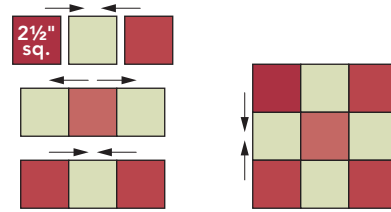


DIAGRAM 3

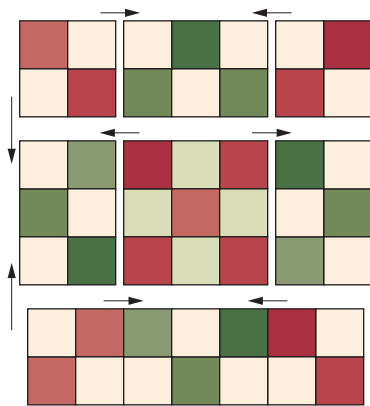
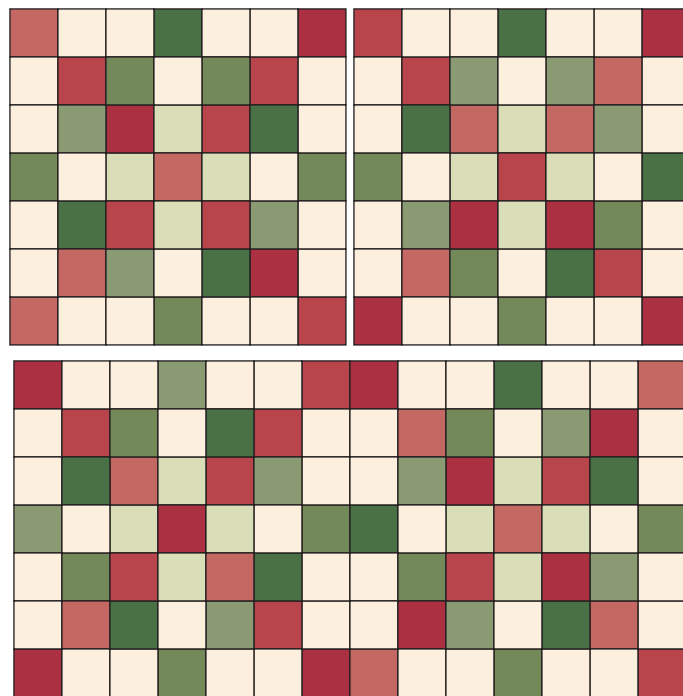


DIAGRAM 4



QUILT ASSEMBLY DIAGRAM