

PATTERN
BROUGHT
TO YOU BY:

AMERICAN
PATCHWORK &
quilting[®]

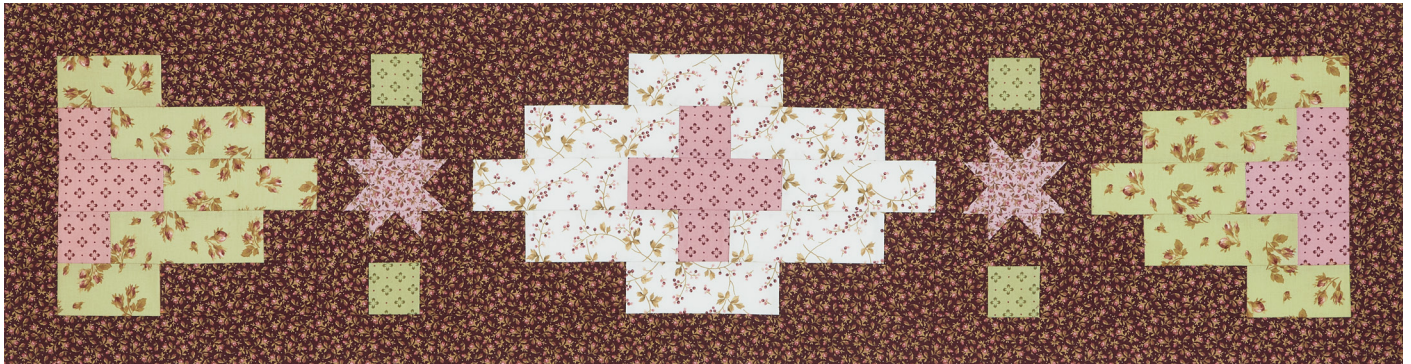
allpeoplequilt.com

PROJECT: Easy Floral Table Runner

Subtle florals in simple strip-set blocks compose a springtime table runner.

INSPIRED BY: *Be Bold* from designer Jo Kramer and Kelli Hanken of Jo's Country Junction (joscountryjunction.com)

QUILT TESTER: Colleen Tauke



FABRICS are from the Burgundy & Blush collection by Maywood Studio (maywoodstudio.com).

PROJECT: Easy Floral Table Runner

FINISHED QUILT: 14½×54½"
FINISHED BLOCKS: 10" square,
6×10", 10×18"

MATERIALS

Yardages and cutting instructions are based on 42" of usable fabric width.

- ⅔ yard brown print (blocks, border)
- 9×21" piece (fat eighth) *each* of green floral, pink print, pink floral, green print, and white floral (blocks)
- ⅜ yard binding fabric
- 1¾ yards backing fabric
- 23×63" batting

CUT FABRICS

Cut pieces in the following order.

From brown print, cut:

- 4–2½×42" strips for border
- 8–2½×6½" rectangles
- 32–2½" squares

From green floral, cut:

- 6–2½×6½" rectangles
- 4–2½×4½" rectangles

From pink print, cut:

- 1–2½×6½" rectangle
- 2–2½×4½" rectangles
- 6–2½" squares

From pink floral, cut:

- 2–2½" squares
- 16–1½" squares

From green print, cut:

- 4–2½" squares

From white floral, cut:

- 8–2½×6½" rectangles

From binding fabric, cut:

- 4–2½×42" binding strips

ASSEMBLE A BLOCKS

Measurements include ¼" seam allowances. Sew with right sides together unless otherwise stated.

Press seams in directions indicated by arrows on diagrams. If no direction is specified, press seam toward darker fabric.

1. Gather two brown print 2½" squares, two brown print 2½×6½" rectangles, two green floral 2½×4½" rectangles, three green floral 2½×6½" rectangles, two 2½" pink print squares, and one pink print 2½×4½" rectangle.

2. Referring to **Diagram 1**, lay out pieces in five rows. Sew together pieces in rows. Join rows to make Block A. The block should be 10½" square including seam allowances.

3. Repeat steps 1 and 2 to make a second Block A.

ASSEMBLE B BLOCKS

1. Use a pencil to mark a diagonal line on wrong side of each pink floral 1½" square.

2. Align a marked pink floral square with one corner of a brown print 2½" square (**Diagram 2**). Sew on marked line. Trim seam allowance to ¼"; press open attached triangle. Repeat to add a second marked pink floral square to adjacent corner of brown print square to make a star point unit. The unit should be 2½" square including seam allowances. Repeat to make eight star point units total.

3. Referring to **Diagram 3**, lay out eight brown print 2½" squares, two green print 2½" squares, four star point units, and one pink floral 2½" square in five rows. Sew together pieces in rows. Join rows to make Block B. The block should be 6½×10½" including seam allowances.

4. Repeat steps 2 and 3 to make a second Block B.

ASSEMBLE C BLOCK

1. Gather remaining brown print 2½×6½" rectangles, remaining brown print 2½" squares, white floral 2½×6½" rectangles, remaining pink print 2½" squares, and pink print 2½×6½" rectangle.

2. Referring to **Diagram 4**, lay out pieces in five rows. Sew together pieces in rows, pressing seams toward the white floral pieces. Join rows to make Block C. The block should be 10½×18½" including seam allowances.

ASSEMBLE QUILT TOP

1. Referring to **Quilt Assembly Diagram**, join blocks in a row to complete quilt center. Press seams in one direction. The quilt center should be 10½×50½" including seam allowances.

2. Cut and piece brown print 2½×42" strips to make:

- 2–2½×50½" strips
- 2–2½×14½" strips

3. Sew brown print 2½×50½" strips to long edges of the quilt center (**Quilt Assembly Diagram**). Sew brown print 2½×14½" strips to remaining edges to complete quilt top. Press seams toward borders. The quilt top should be 14½×54½" including seam allowances.

FINISH QUILT

1. Layer quilt top, batting, and backing; baste. Quilt as desired.

2. Bind with binding strips.

PROJECT: Easy Floral Table Runner

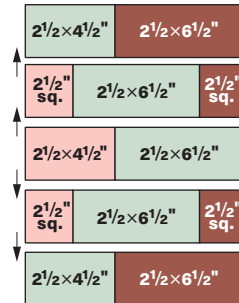


Diagram 1

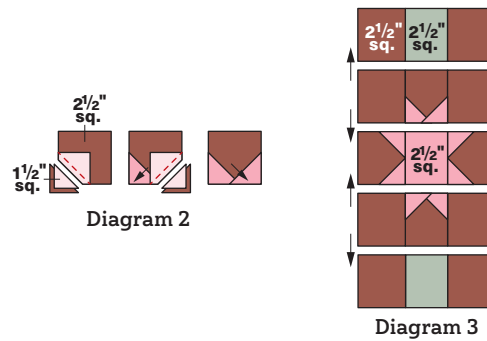


Diagram 2

Diagram 3

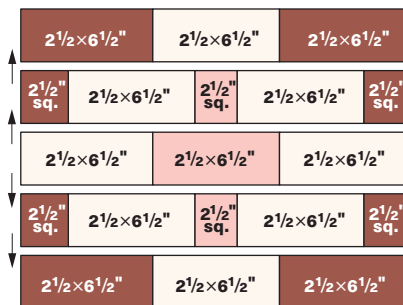
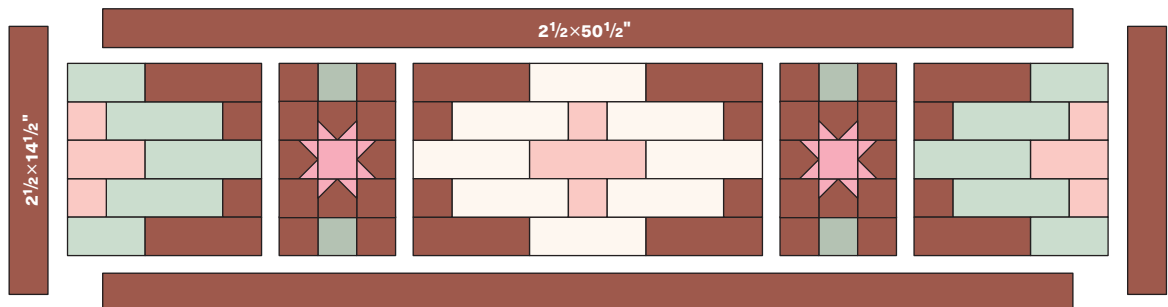


Diagram 4



Quilt Assembly Diagram