

PATTERN  
BROUGHT  
TO YOU  
FROM:

AMERICAN  
PATCHWORK &  
**quilting**<sup>®</sup>

[allpeoplequilt.com](http://allpeoplequilt.com)

PROJECT: I-Spy



41"-square quilt ↷

Quilters often give their time and talents to make quilts for charity. The instructions include yardage and cutting lists for four popular charity sizes (in addition to the original quilt size).

Quiltmaker **Kat Tichenor**

## PROJECT: I-Spy

### PLAN YOUR QUILT

Choose your quilt size on the chart on *page 3*. The instructions that follow are for the 41"-square quilt. Referring to the chart, substitute the materials, cutting instructions, and quilt assembly as needed in the instructions below.

### MATERIALS

Yardages and cutting instructions are based on 42" of usable fabric width.

- 9— $\frac{1}{8}$ -yard pieces assorted solids in tan, yellow, pink, cream, green, blue, peach, gray, and lavender (blocks)
- 81—5" squares assorted novelty prints in cotton, flannel, and corduroy (blocks)
- $\frac{1}{2}$  yard green tone-on-tone (binding)
- $2\frac{3}{4}$  yards backing fabric
- 49" square batting

**FINISHED QUILT:** 41" square

**FINISHED BLOCKS:**  $13\frac{1}{2}$ " square

### CUT FABRICS

Cut pieces in the following order.

**From each assorted solid, cut:**

- 36— $1\frac{3}{4}$ " squares

**From green tone-on-tone, cut:**

- 5— $2\frac{1}{2}\times 42$ " binding strips

### ASSEMBLE BLOCKS

Measurements include  $\frac{1}{4}$ " seam allowances. Sew with right sides together unless otherwise stated.

Press seams in directions indicated by arrows on diagrams. If no direction is specified, press seam toward darker fabric.

**1.** Gather 36 matching solid  $1\frac{3}{4}$ " squares and nine assorted novelty print 5" squares. Use a pencil to mark a diagonal line on wrong side of each solid  $1\frac{3}{4}$ " square.

**2.** Align a marked solid square with one corner of a novelty print 5" square (**Diagram 1**; note direction of marked line). Sew on marked line; trim excess fabric, leaving  $\frac{1}{4}$ " seam allowance. Press open attached triangle. In same manner, add marked solid squares to remaining corners of novelty print square to make a Snowball unit (**Diagram 2**; again note direction of marked lines). The unit still should be 5" square including seam allowances. Repeat to make nine Snowball units total.

**3.** Referring to **Diagram 3**, lay out Snowball units in three rows, orienting novelty print motifs as desired. Sew together units in rows. Join rows to make a block. The block should be 14" square including seam allowances.

**4.** Repeat to make nine blocks total or the number of blocks indicated in Optional Sizes chart on *page 3* for your chosen quilt size.

### ASSEMBLE QUILT TOP

**1.** Referring to **Quilt Assembly Diagram**, lay out blocks in three rows or the number of rows indicated in Optional Sizes chart.

**2.** Sew together blocks in rows. Press seams in one direction, alternating direction with each row. Join rows to complete quilt top. Press seams in one direction.

### FINISH QUILT

**1.** Layer quilt top, batting, and backing; baste.

**2.** Quilt as desired. Quiltmaker Kat Tichenor machine-quilted interlocking circles across the featured quilt top (**Quilting Diagram**).

**3.** Bind with green tone-on-tone binding strips.

PROJECT: I-Spy

## Optional Sizes

### 41×54½"

Number of 13½"-square finished blocks: 12  
Number of rows: 4 of 3 blocks each

#### MATERIALS:

- 12—⅛-yard pieces assorted solids in tan, yellow, pink, cream, green, blue, peach, gray, and lavender (blocks)
- 108—5" squares assorted novelty prints in cotton, flannel, and corduroy (blocks)
- ½ yard green tone-on-tone (binding)
- 2¾ yards backing fabric
- 49×63" batting

#### CUT FABRICS:

**From each assorted solid, cut:**

- 36—1¾" squares

**From green tone-on-tone, cut:**

- 5—2½×42" binding strips

### 54½×68"

Number of 13½"-square finished blocks: 20  
Number of rows: 5 of 4 blocks each

#### MATERIALS:

- 20—⅛-yard pieces assorted solids in tan, yellow, pink, cream, green, blue, peach, gray, and lavender (blocks)
- 180—5" squares assorted novelty prints in cotton, flannel, and corduroy (blocks)
- ⅝ yard green tone-on-tone (binding)
- 3½ yards backing fabric
- 63×76" batting

#### CUT FABRICS:

**From each assorted solid, cut:**

- 36—1¾" squares

**From green tone-on-tone, cut:**

- 7—2½×42" binding strips

### 68×81½"

Number of 13½"-square finished blocks: 30  
Number of rows: 6 of 5 blocks each

#### MATERIALS:

- 30—⅛-yard pieces assorted solids in tan, yellow, pink, cream, green, blue, peach, gray, and lavender (blocks)
- 270—5" squares assorted novelty prints in cotton, flannel, and corduroy (blocks)
- ¾ yard green tone-on-tone (binding)
- 5 yards backing fabric
- 76×90" batting

#### CUT FABRICS:

**From each assorted solid, cut:**

- 36—1¾" squares

**From green tone-on-tone, cut:**

- 8—2½×42" binding strips

PATTERN  
BROUGHT  
TO YOU  
FROM:

PROJECT: I-Spy

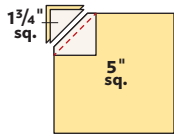


Diagram 1

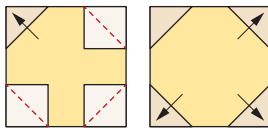


Diagram 2

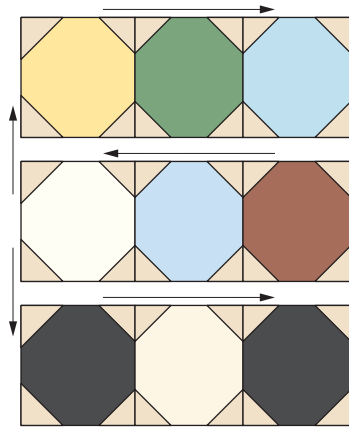
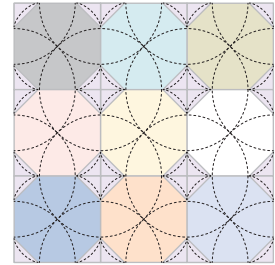
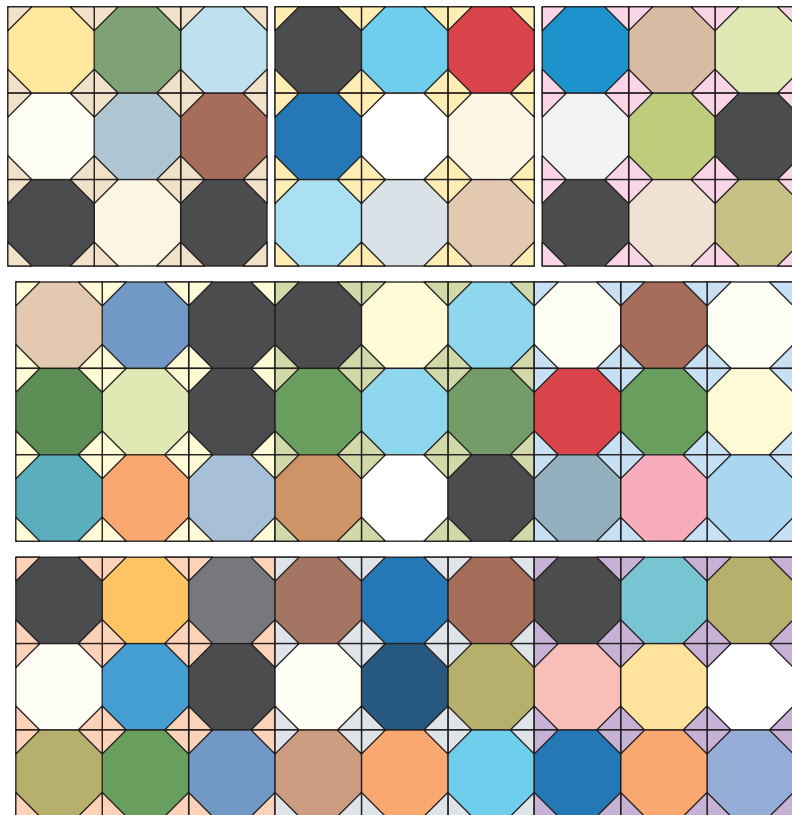


Diagram 3



Quilting Diagram



Quilt Assembly Diagram