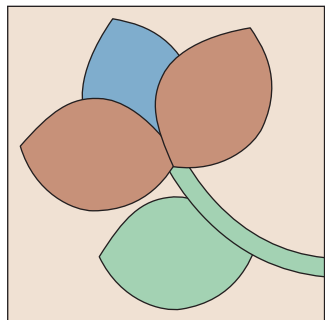


Project: Petal Perfect



Appliqué Placement Diagram

Materials

- 6½" square of tan print
- Green print, rust print, and blue print scraps

Finished block: 6" square

Cut the Fabrics

Before beginning, read All About Appliqué on pages 2-3. Choose a method of appliqué, then refer to the instructions for your chosen appliqué method to make templates (if necessary), cut fabric pieces, and prepare them.

From green print, cut:

- 1 of Flower Pattern
- 1 ⅞×5" bias strip

From rust print, cut:

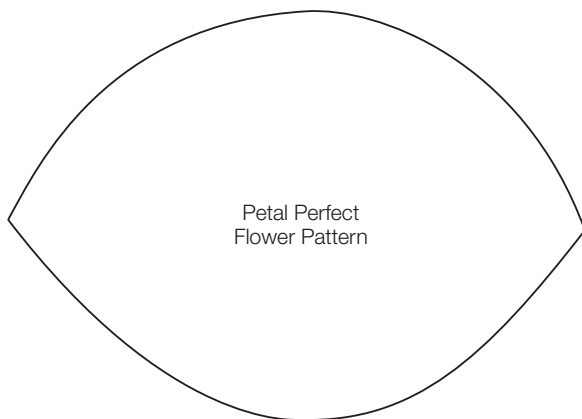
- 2 of Flower Pattern

From blue print, cut:

- 1 of Flower Pattern

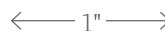
Assemble the Block

1. Prepare and position the appliqué pieces on the tan print 6½" square (**Appliqué Placement Diagram**). Fold the green print 1 ⅞×5" bias strip in half lengthwise with the wrong side inside; press. Stitch ¼" in from the raw edges to keep them aligned. Fold the strip in half again, hiding the raw edges behind the first folded edge to create the flower stem; press.
2. Using small slip stitches and threads in colors that match the fabrics, appliqué the pieces in place, working from the bottom pieces to the top.



Petal Perfect Flower Pattern

This box should measure 1".



* NOTE:

When printing a downloadable pdf, set Page Scaling preference to NONE to print patterns at 100%. Do NOT "Shrink to Fit" or "Fit to Printable Area."

All About Appliqué

The beauty of appliquéd quilts attracts the attention of quilters. But to many, appliqué sounds too difficult or time-consuming to attempt. We've offered three appliqué techniques that are sure to meet your every appliqué need.

Choose An Appliqué Method

Appliqué can be done by hand or machine. What follows are three methods. Needle-turn appliqué is the traditional hand-stitched method. Fusible web offers the quiltmaker speed and ease in tracing and securing the shapes to a foundation. The edges of the appliqué can be finished by hand and or machine. Freezer-paper appliqué is a method that uses a specific product to prepare your appliqué pieces. Once the pieces are prepared, they can be appliquéd by hand or machine.

How to Use Freezer-Paper Templates

A template is a pattern used to trace the appliqué shape onto fabric. Freezer paper works well for appliqué templates because it is inexpensive and is available at grocery stores or some quilt shops. Freezer paper has a shiny coating on one side that temporarily adheres to fabric when pressed with a warm iron.

1. To make a template, lay the freezer paper, shiny side down, over a printed pattern and trace the pattern using a permanent marker (Photo 1). Mark each template with its letter designation; cut out the shape on the drawn lines.
2. Place freezer-paper template dull side up on the right side of the fabric. While holding the freezer paper in place, cut the shape from fabric, adding a $\frac{3}{16}$ " seam allowance to all edges (Photo 2).
3. Turn the freezer-paper template shiny side up and place on the wrong side of the appliqué shape. Clip the inside curves or points on the shapes (Photo 3). When clipping inside curves, clip halfway through the seam allowances. Make clips on the bias grain of the seam allowance. Some clips will be on the diagonal, rather than perpendicular to the seam line. Diagonal clipping prevents fabric from raveling while you're working on the edges.
4. Use the tip of a hot, dry iron to push the seam allowance over the edge of the freezer paper (Photo 4). The seam allowance will adhere to the shiny side of the paper. Make sure the appliqué fabric is pressed taut against the template. After

all the edges are pressed, let the appliqué shape cool, then remove the freezer-paper template. Or, if desired, you can remove the freezer paper after sewing the appliqué to the foundation.

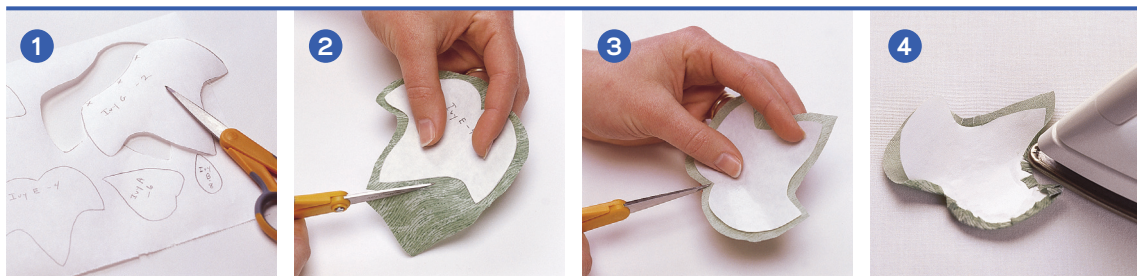
5. Appliqué the shape to the foundation, using hand or machine stitching.

How to Do Needle-turn Appliqué

For needle-turn appliqué, we recommend making templates from template plastic, which is available at quilting and crafts supply stores. Because it is sturdy and durable, template plastic is a good choice if you want to make permanent templates of a design you expect to use over and over again.

1. To make templates, lay the plastic over a printed pattern. Trace the pattern onto the plastic using a permanent marker. Make the template the exact size that finished pieces will be (without seam allowances). Cut out shapes on the drawn lines.
2. Place your templates faceup on the right side of the fabric, positioning them at least $\frac{1}{2}$ " apart; trace.

USING FREEZER-PAPER TEMPLATES



All About Appliqué

3. Cut out the appliqué shapes with scissors, adding a $\frac{3}{16}$ " seam allowance to all edges.
4. Use pins, large hand stitches, or washable appliqué glue to baste shapes in place on the foundation. Appliqué the shapes to the foundation, using your needle to turn under the seam allowances as you work. Use the needle tip to turn under the fabric just ahead of the section being stitched.
1. Position fusible web, paper side up, over appliqué patterns and place on a light box or sunny window. Use a pencil to trace each pattern the specified number of times. If you are tracing multiple pieces at one time, leave at least $\frac{1}{2}$ " between tracings.
2. To reduce the stiffness of the finished project, consider cutting away the center of your fusible-web shapes. Cut $\frac{1}{4}$ " inside the traced lines and discard the centers.

How to Use Fusible Web

Use lightweight fusible web with appliqué pieces that will be hand- or machine-stitched to the foundation fabric.

If you're not using an appliqué pattern designed for fusible web, you will need to create a mirror image of the pattern before tracing it. If you don't, your appliqués will be reversed once you cut them from fabric. To create a reverse image, tape the pattern facedown on a light box or sunny window and trace. Be sure to mark the name and the word "reversed" on the pattern to remind you that you've already reversed the image.

3. Place the fusible-web shapes, paper side up, on the back of the designated appliqué fabrics. Press in place following manufacturer's instructions. Do not slide the iron, but pick it up to move it from one area to the next. Let the shapes cool.
4. Cut out the fabric shapes on the drawn lines. Peel off the paper backings.
5. Follow manufacturer's instructions to fuse the appliqués in place on the foundation. Hand- or machine-stitch around the appliqué edges.

USING FUSIBLE WEB

