

PROJECT: Winter Woods

Deck your door or a wall with a wintry quilt featuring pine trees and a snowflake.

INSPIRED BY: *A Walk in the Woods* from designer Katie Hennagir (*baywindowquiltshop.com*)

QUILT TESTER: Diane Tomlinson



FABRICS are from the Shimmer Frost collection by Deborah Edwards for Northcott (*northcott.com*).

FINISHED QUILT: 21½×48½"
FINISHED BLOCKS: 12" square

MATERIALS

Yardages and cutting instructions are based on 42" of usable fabric width.

- ⅔ yard total assorted white prints (blocks)
- ⅔ yard total assorted blue prints (blocks)
- ⅔ yard mottled blue (sashing, inner border, binding)
- ½ yard white snowflake print (outer border)
- 1⅔ yards backing fabric
- 30×57" batting

CUT FABRICS

Cut pieces in the following order.

From assorted white prints, cut:

- 6-3⅞" squares
- 4-3½×5" rectangles
- 16-3½" squares

From assorted blue prints, cut:

- 14-3⅞" squares
- 4-3½×6½" rectangles
- 6-3½" squares

From mottled blue, cut:

- 4-2½×42" binding strips
- 2-2×39½" inner border strips
- 2-2×15½" inner border strips
- 2-2×12½" sashing strips

From white snowflake print, cut:

- 4-3½×42" strips for outer border

ASSEMBLE A BLOCKS

Measurements include ¼" seam allowances. Sew with right sides together unless otherwise stated.

Press seams in directions indicated by arrows on diagrams. If no direction is specified, press seam toward darker fabric.

1 Mark a diagonal line on wrong side of assorted white print 3⅞" squares and four assorted blue print 3⅞" squares.

2 Layer a marked white print square atop an unmarked blue print 3⅞" square. Sew together with two seams, stitching ¼" on each side of marked line (**Diagram 1**). Cut apart on marked line to make two triangles. Press triangles open to make two white-blue triangle-squares. Each triangle-square should be 3½" square including seam allowances. Repeat to make 12 white-blue triangle-squares total.

3 Using marked blue print squares and remaining unmarked blue print 3⅞" squares, repeat Step 2 to make eight blue triangle-squares (**Diagram 2**).

4 Referring to **Diagram 3**, lay out two white print 3½" squares, six white-blue triangle-squares, four blue triangle-squares, two white print 3½×5" rectangles, and one blue print 3½" square in four rows. Sew together pieces in rows. Join rows to make Block A. The block should be 12½" square including seam allowances. Repeat to make a second A block.

ASSEMBLE B BLOCK

1 Sew together a white print 3½" square and a blue print 3½" square to make Unit 1 (**Diagram 4**). The unit should be 3½×6½" including seam allowances. Repeat to make four total of Unit 1.

2 Use a pencil to mark a diagonal line on wrong side of remaining assorted white print 3½" squares.

3 Align a marked white print square with one end of a blue print 3½×6½" rectangle (**Diagram 5**; note direction of marked line). Sew on marked line. Trim seam allowance to ¼". Press open attached triangle. Repeat

with opposite end of rectangle to make Unit 2. The unit should be 3½×6½" including seam allowances. Repeat to make four total of Unit 2.

4 Sew together one each of units 1 and 2 to make Unit 3 (**Diagram 6**). The unit should be 6½" square including seam allowances. Repeat to make four total of Unit 3.

5 Referring to **Diagram 7** for unit orientation, sew together all four of Unit 3 in pairs. Join pairs to make Block B. The block should be 12½" square including seam allowances.

ASSEMBLE QUILT TOP

1 Referring to **Quilt Assembly Diagram**, lay out blocks and mottled blue 2×12½" sashing strips in a row. Sew row together to make quilt center; press seams toward sashing. The quilt center should be 12½×39½" including seam allowances.

2 Sew mottled blue 2×39½" inner border strips to long edges of quilt center. Add mottled blue 2×15½" inner border strips to remaining edges. Press seams toward inner border.

3 Piece and cut white snowflake print 3½×42" strips to make:

- 2-3½×42½" outer border strips
- 2-3½×21½" outer border strips

4 Sew long outer border strips to long edges of quilt center. Add short outer border strips to remaining edges to complete quilt top. Press seams toward outer border to complete quilt.

FINISH QUILT

1 Layer quilt top, batting, and backing; baste. Quilt as desired.

2 Bind with mottled blue binding strips.

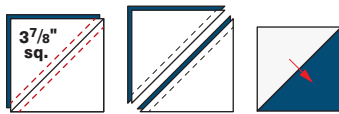
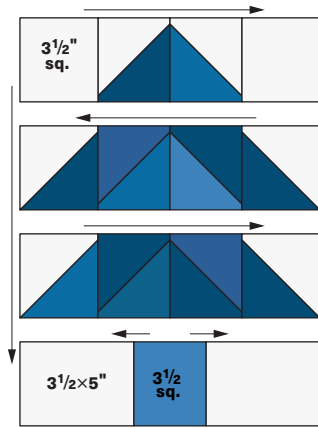


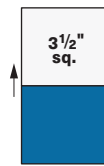
Diagram 1



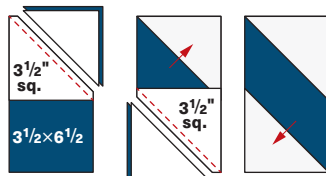
Diagram 2



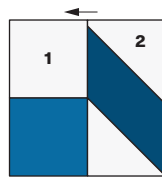
Block A
Diagram 3



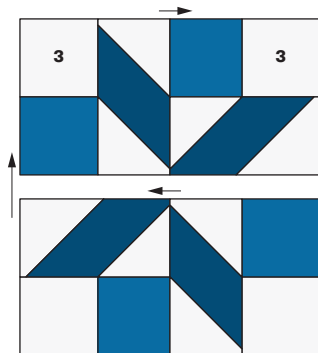
Unit 1
Diagram 4



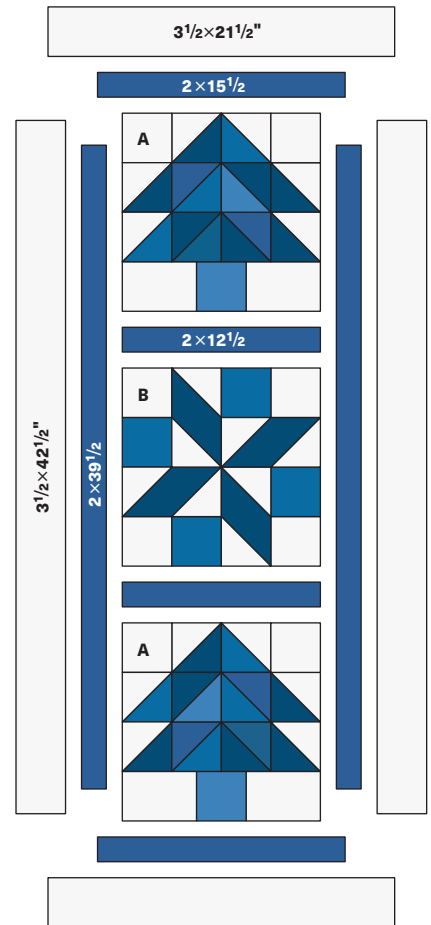
Unit 2
Diagram 5



Unit 3
Diagram 6



Block B
Diagram 7



Quilt Assembly Diagram