

Project: Pet Perch

DESIGNER: ANNA GRIFFIN (ANNAGRIFFIN.COM)



You won't have to beg your furry friend to take a seat on a plush pillow made just for him (or her).

Project: Pet Perch

Materials

- 1½ yards animal print (pillow top and bottom)
- ⅓ yard black print (pillow side, covered buttons)
- 2¼ yards solid black lip cording (½"-wide lip)
- Polyester fiberfill
- 2—1⅛"-diameter buttons to cover
- Dollmaker's needle

Finished Pillow: 24" diameter, 3¼" high

Quantities are for 44/45"-wide, 100% cotton fabrics.

Measurements include ½" seam allowances. Sew with right sides together unless otherwise stated.

Cut Fabrics

Cut pieces in the following order. The Circle Pattern is on pages 5–8. To make a template of the pattern, trace onto a large sheet of folded paper, cut out on drawn lines, and unfold.

From animal print, use template to cut:

- 2 of Circle Pattern

From black print, cut:

- 2—4¼×39" strips

Add Cording

1. Pin cording to one animal print circle, matching edge of lip with raw edge of circle. Clip cording lip to ease around curve of circle (**Diagram 1**).
2. Lap cording ends, pushing tails into seam allowance (**Diagram 2**).
3. Using a zipper foot, stitch close to cord to secure it and make pillow top (**Diagram 3**).

Assemble Pillow

1. Layer black print 4¼×39" strips with right sides together. Sew across each short end to make a loop. Press seams open.
2. Using sharp scissors, clip into seam allowances along long edges of black print loop, but do not cut into or beyond seam lines.
3. With raw edges aligned and right sides together, pin pillow top to one long edge of black print loop. Using a zipper foot, stitch just inside previous stitching line, as close to cord as possible (**Diagram 4**).
4. Repeat Step 3, joining remaining animal print circle to remaining edge of black print loop, leaving a 6" opening for turning (**Diagram 5**).
5. Turn right side out. Stuff firmly with fiberfill. Hand-sew opening closed.
6. Following manufacturer's instructions, use black print scraps to cover each button.
7. Thread dollmaker's needle with double length of thread; knot end. Stitch down through center of pillow; sew through button shank of first button and back through center of pillow. Sew through button shank of second button on opposite side of pillow. Repeat as needed, pulling thread tight to gather pillow at center. Tie off ends of thread to complete pillow.

Project: Pet Perch



Project: Pet Perch

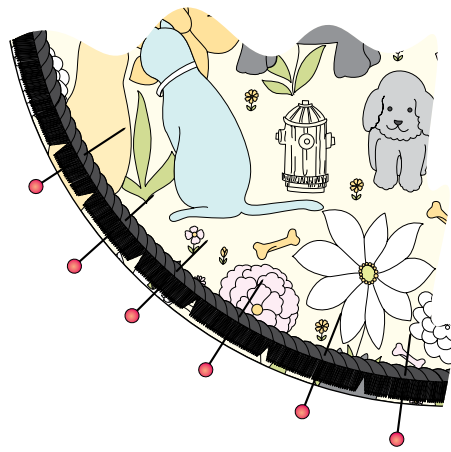


DIAGRAM 1

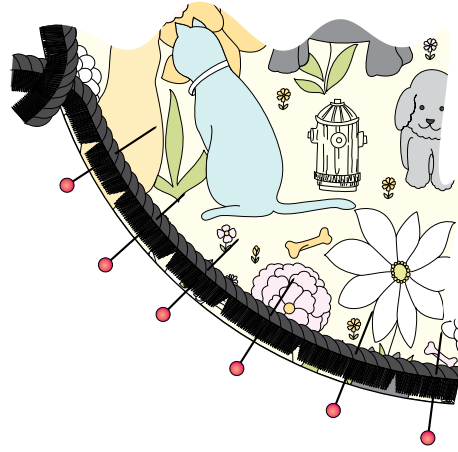


DIAGRAM 2

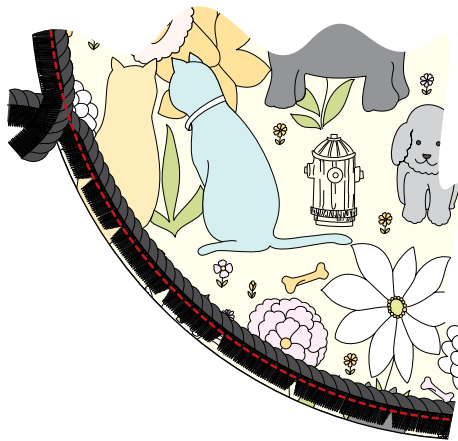


DIAGRAM 3

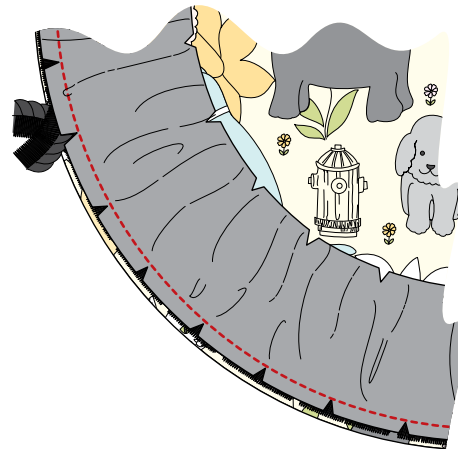


DIAGRAM 4

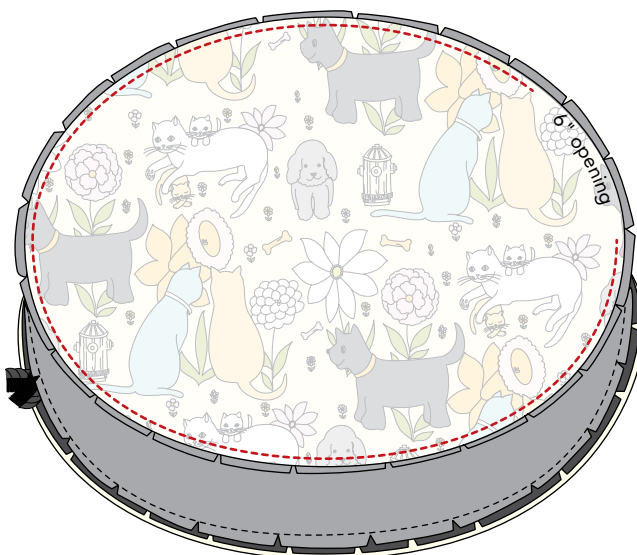


DIAGRAM 5

Project: Pet Perch

Pet Perch
Top and Bottom
1 of 4

Place on fold

To make an entire pattern, cut out partial patterns on outside lines and tape together, matching dots and letters.

This box should measure 1".

← 1" →

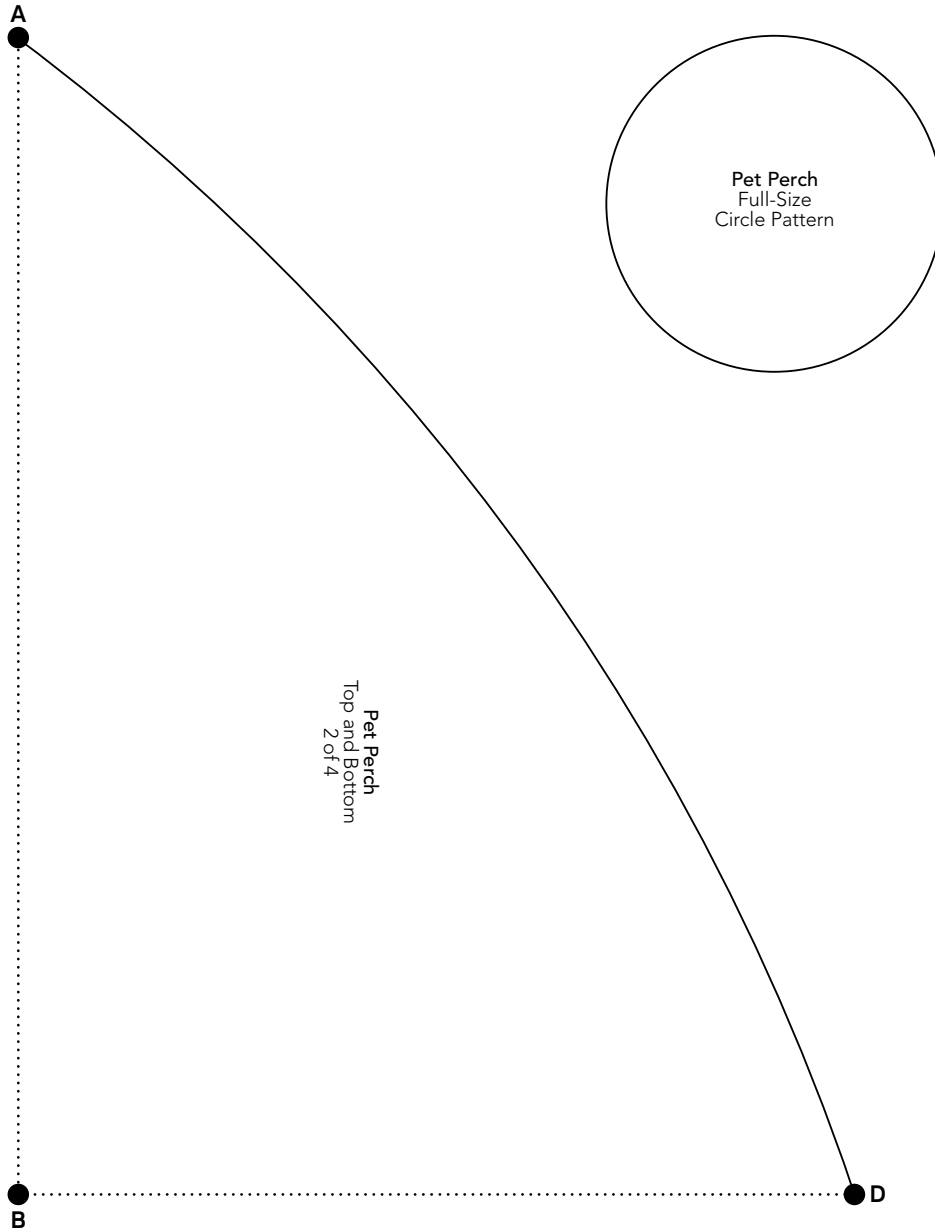
*** NOTE:**

When printing a downloadable pdf, set Page Scaling preference to NONE to print patterns at 100%. Do NOT "Shrink to Fit" or "Fit to Printable Area."

C

B

Project: Pet Perch



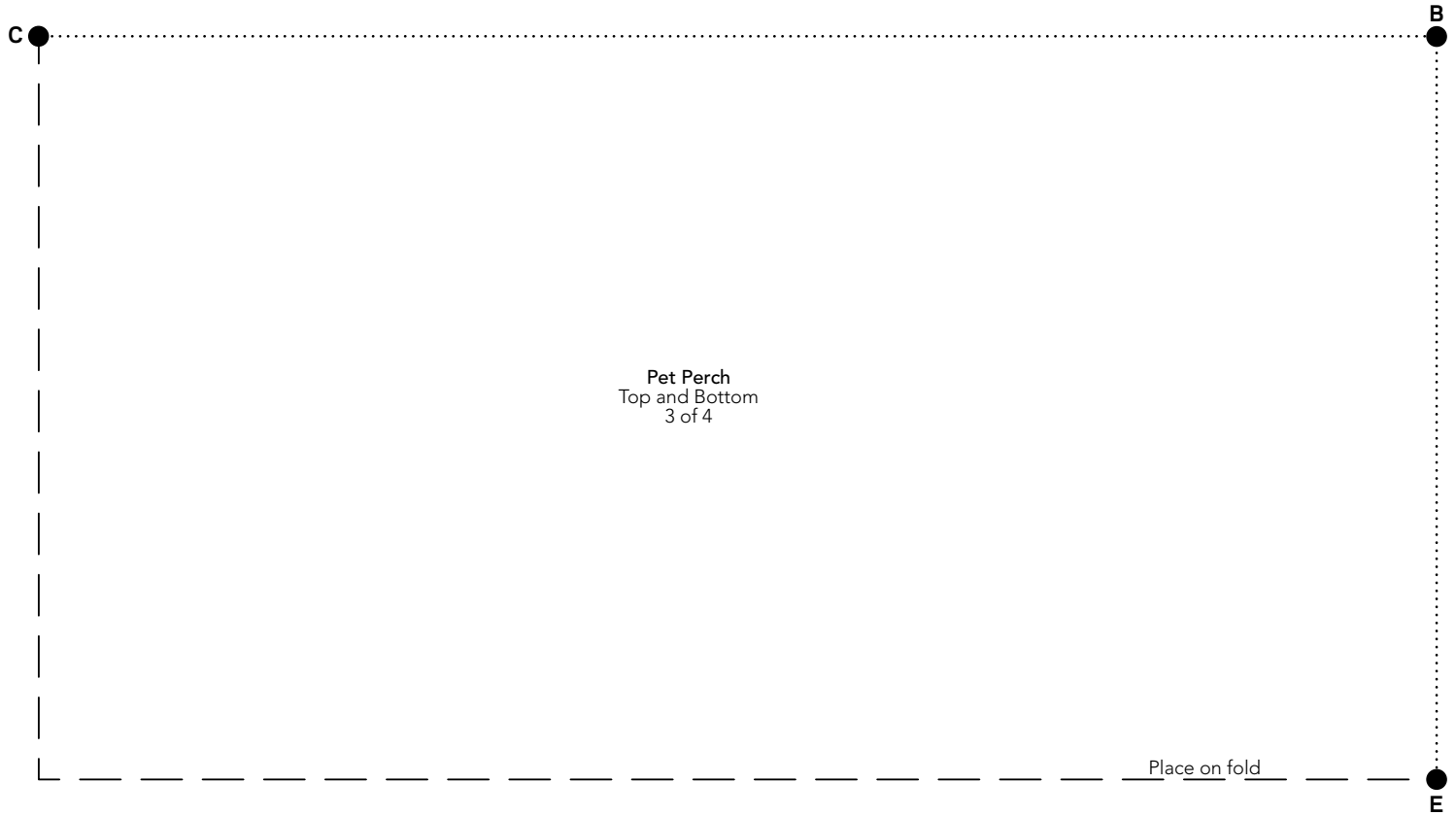
To make an entire pattern, cut out partial patterns on outside lines and tape together, matching dots and letters.

This box should measure 1".

← 1" →

*** NOTE:** When printing a downloadable pdf, set Page Scaling preference to NONE to print patterns at 100%. Do NOT "Shrink to Fit" or "Fit to Printable Area."

Project: Pet Perch



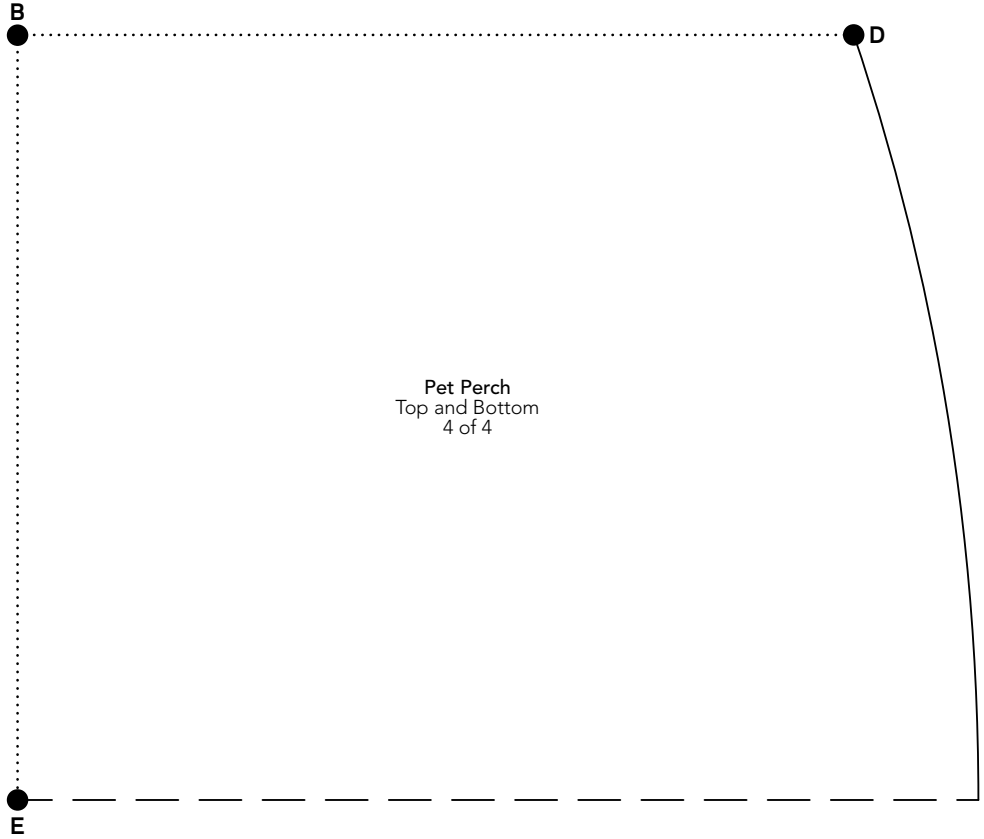
To make an entire pattern, cut out partial patterns on outside lines and tape together, matching dots and letters.

This box should measure 1".

← 1" →

*** NOTE:** When printing a downloadable pdf, set Page Scaling preference to NONE to print patterns at 100%. Do NOT "Shrink to Fit" or "Fit to Printable Area."

Project: Pet Perch



To make an entire pattern, cut out partial patterns on outside lines and tape together, matching dots and letters.

This box should measure 1".
← 1" →

*** NOTE:** When printing a downloadable pdf, set Page Scaling preference to NONE to print patterns at 100%. Do NOT "Shrink to Fit" or "Fit to Printable Area."