

Project: Tic-Tac-Toe

INSPIRED BY *IN THE LOOP* FROM DESIGNER CARL HENTSCH OF 3 DOG DESIGN CO. (3DOGDESIGNCO.COM)
QUILT TESTER: LAURA BOEHNKE



FABRICS are from the Fontaine collection by Yvette Marie Jones and Suede Medley collection, both from P&B Textiles (pbtext.com).



Play with Xs and Os in a wall hanging that showcases fussy-cut sashing and blocks in a kaleidoscope of fresh colors.

Project: Tic-Tac-Toe

Materials

If you plan to fussy-cut, you may need more fabric than the yardages specified here*. It depends on the fabric repeats.

- ½ yard fuchsia print (blocks)
- 1 yard assorted green, pink, and white prints* (blocks)
- ¾ yard green print (blocks, outer border)
- 7/8 yard light gray (blocks)
- ½ yard gray print* (sashing)
- ½ yard green square print* (sashing squares)
- ½ yard purple print (inner border)
- ½ yard binding fabric
- 1 5/8 yards backing fabric
- 43x56" batting

Finished quilt: 47½x34¾"

Finished block: 9" square

Yardages and cutting instructions are based on 42" of usable fabric width.

Measurements include ¼" seam allowances. Sew with right sides together unless otherwise stated.

Press seams in directions indicated by arrows on diagrams. If no direction is specified, press toward darker fabric.

Cut Fabrics

Cut pieces in the following order. Patterns are on pages 6–9. To make templates of patterns, see *Make and Use Templates*, page 10. Be sure to transfer dots and center marks to templates, then to fabric pieces.

Quilt tester Laura Boehnke fussy-cut some of the fabrics: She centered the gray print squares in the sashing strips, centered a green square in each green print sashing square, and cut three sets of four matching A wedges from a panel print.

From fuchsia print, cut:

- 12 of Pattern B

From assorted green, pink, and white prints, cut:

- 24 of Pattern A (6 sets of 4 matching pieces)

From green print, cut:

- 4—2½x42" strips for outer border

From light gray print, cut:

- 7 of Pattern C
- 10 of Pattern D

From gray print, cut:

- 6—2x20" sashing strips
- 12—2x9½" sashing strips

From green square print, cut:

- 12—2" sashing squares

From purple print, cut:

- 4—¾x42" strips for inner border

From binding, cut:

- 5—2½x42" binding strips

Assemble Blocks

1. With right sides together, match center notches of a fuchsia print B arc and a green, pink, or white print A piece (**Diagram 1**). Pin together at center, at seam ends, and then liberally in between, gently easing edges as needed to align (**Diagram 2**).
2. Sew together curved edges to make a corner unit (**Diagram 3**). Clip into seam allowance of the edge that curves in (the concave edge) as needed to get it to lie flat. Do not cut into or beyond seam lines, and do not clip convex edge (the edge that curves out).
3. Repeat steps 1 and 2 to make 12 fuchsia corner units total (three sets of four matching corner units).
4. Using green print B arcs and remaining assorted green, pink,

and white print A pieces, repeat steps 1 and 2 to make 12 green corner units total (three sets of four matching corner units).

5. Lay out all corner units in sets of four to create six circles (**Quilt Assembly Diagram**).
6. Referring to your layout and the **Quilt Assembly Diagram**, sew two adjacent inside corner units to a light gray print C piece to make a block (**Diagram 4**). The block should be 9½" square including seam allowances. Repeat to make seven blocks total.
7. Sew a remaining corner unit to a light gray print D piece to make a setting triangle (**Diagram 5**). Repeat to make 10 setting triangles total.

Assemble Quilt Center

1. Referring to **Quilt Assembly Diagram**, lay out blocks, setting triangles, gray print sashing strips, and green square print sashing squares in 11 diagonal rows. Sew together pieces in each row. Press seams toward sashing strips.
2. Join rows. Press D seams toward sashing strips.
3. Referring to **Diagram 6**, trim sashing squares and light gray print D pieces ¼" beyond points of sashing strips (see inset) to complete quilt center. Quilt center should measure 43x30¾" including seam allowances.

Add Borders

1. Cut and piece purple print ¾x42" strips to make:

Project: Tic-Tac-Toe

- 2— $\frac{3}{4}$ × $43\frac{1}{2}$ " inner border strips
- 2— $\frac{3}{4}$ × $30\frac{3}{4}$ " inner border strips

2. Sew short purple print inner border strips to short edges of quilt center. Add long purple print inner border strips to remaining edges. Press all seams toward border.

3. Cut and piece green print $2\frac{1}{2}$ × 42 " strips to make:

- 2— $2\frac{1}{2}$ × $47\frac{1}{2}$ " outer border strips
- 2— $2\frac{1}{2}$ × $30\frac{3}{4}$ " outer border strips

4. Sew short green print outer border strips to short edges of quilt center. Add long green print outer border strips to remaining edges. Press all seams toward border.

Finish Quilt

- 1.** Layer quilt top, batting, and backing; baste. Quilt as desired.
- 2.** Bind with binding strips.

Project: Tic-Tac-Toe

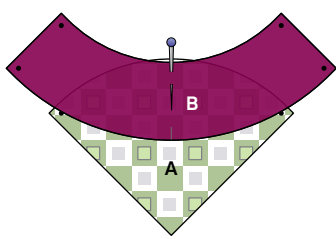


DIAGRAM 1

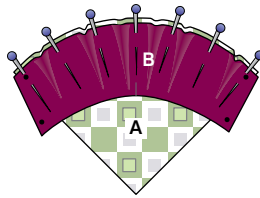


DIAGRAM 2

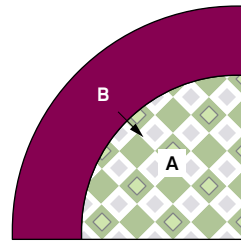


DIAGRAM 3

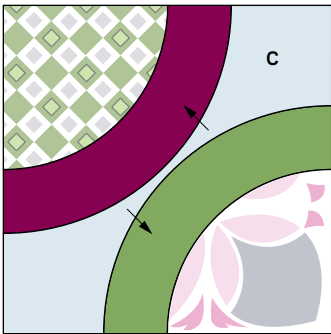


DIAGRAM 4

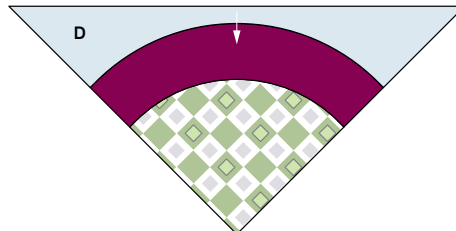


DIAGRAM 5

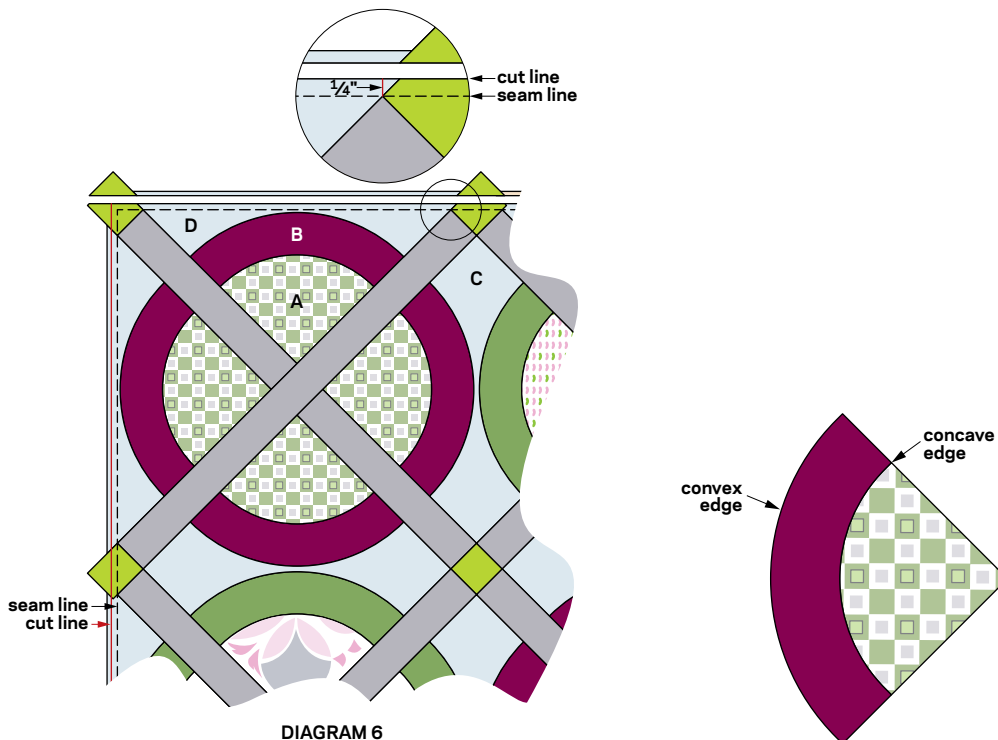
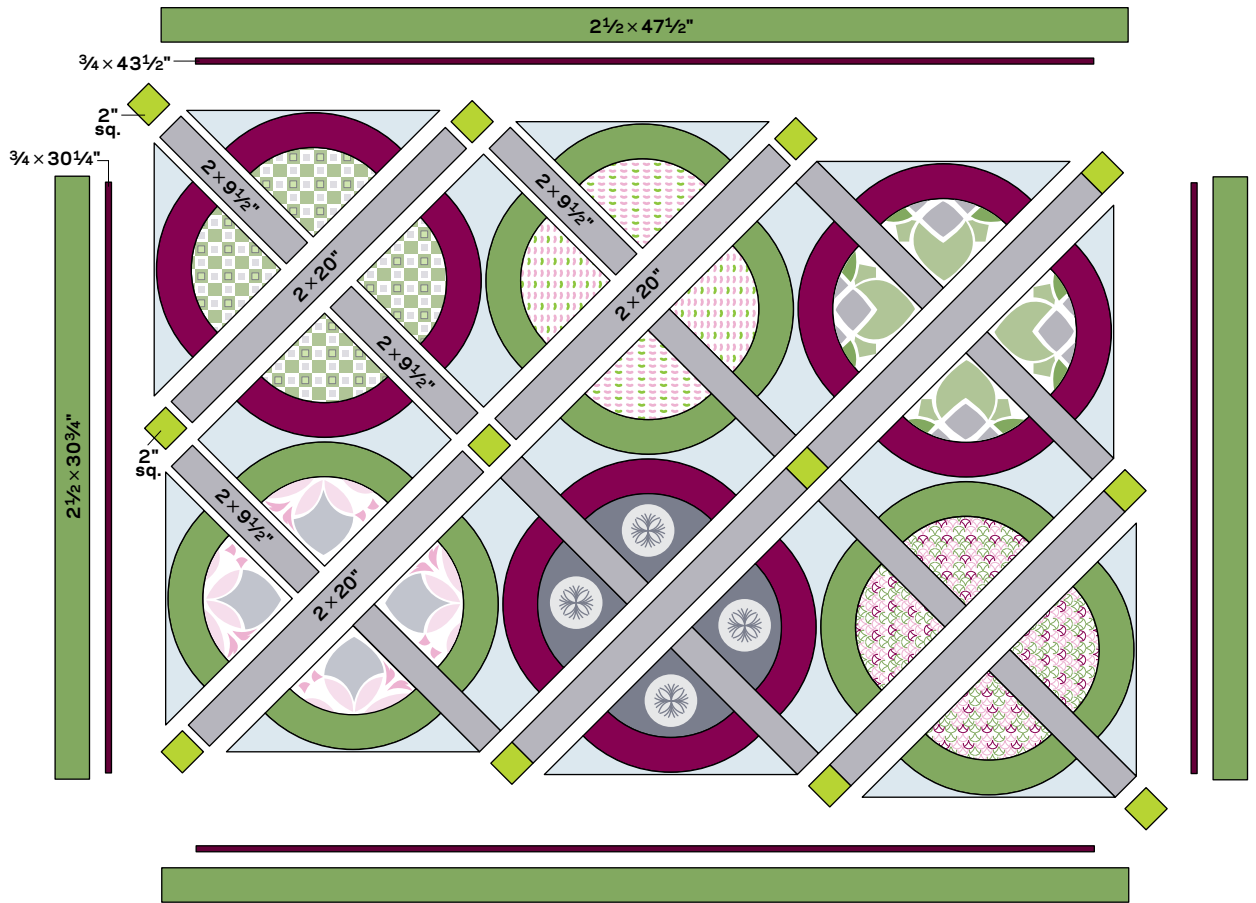


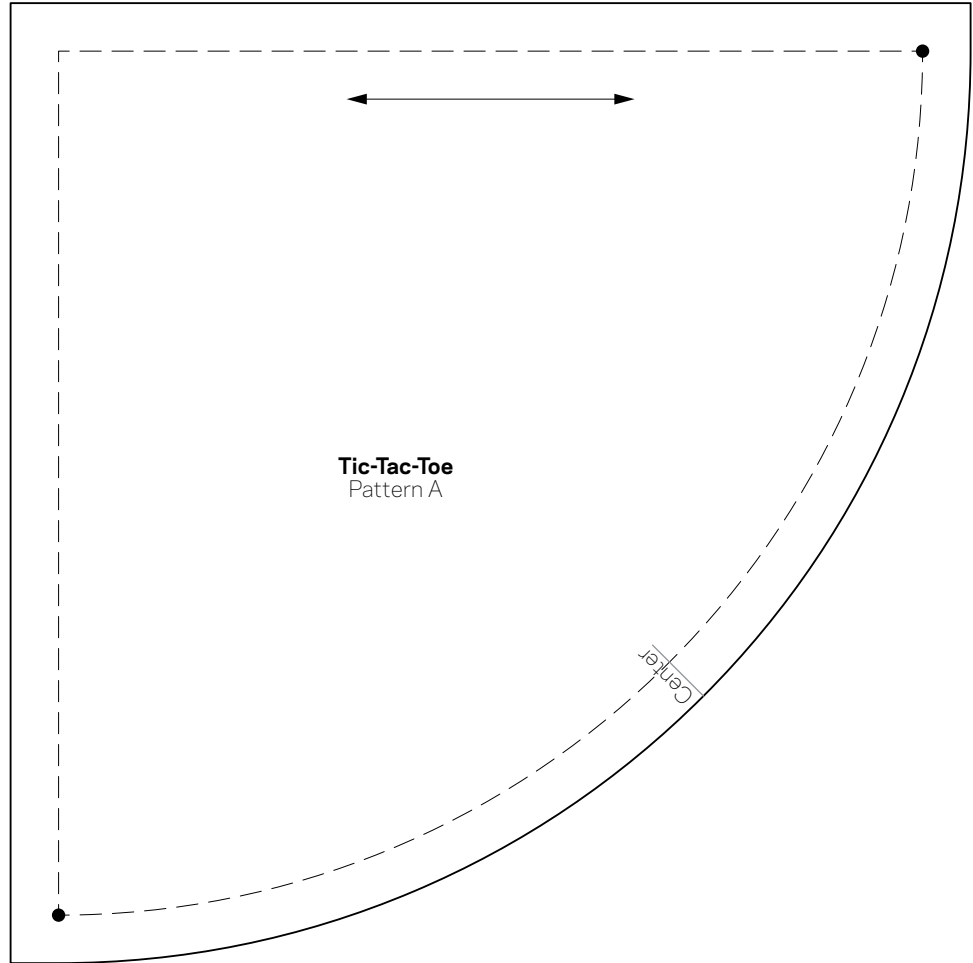
DIAGRAM 6

Project: Tic-Tac-Toe

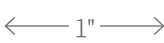


QUILT ASSEMBLY DIAGRAM

Project: Tic-Tac-Toe

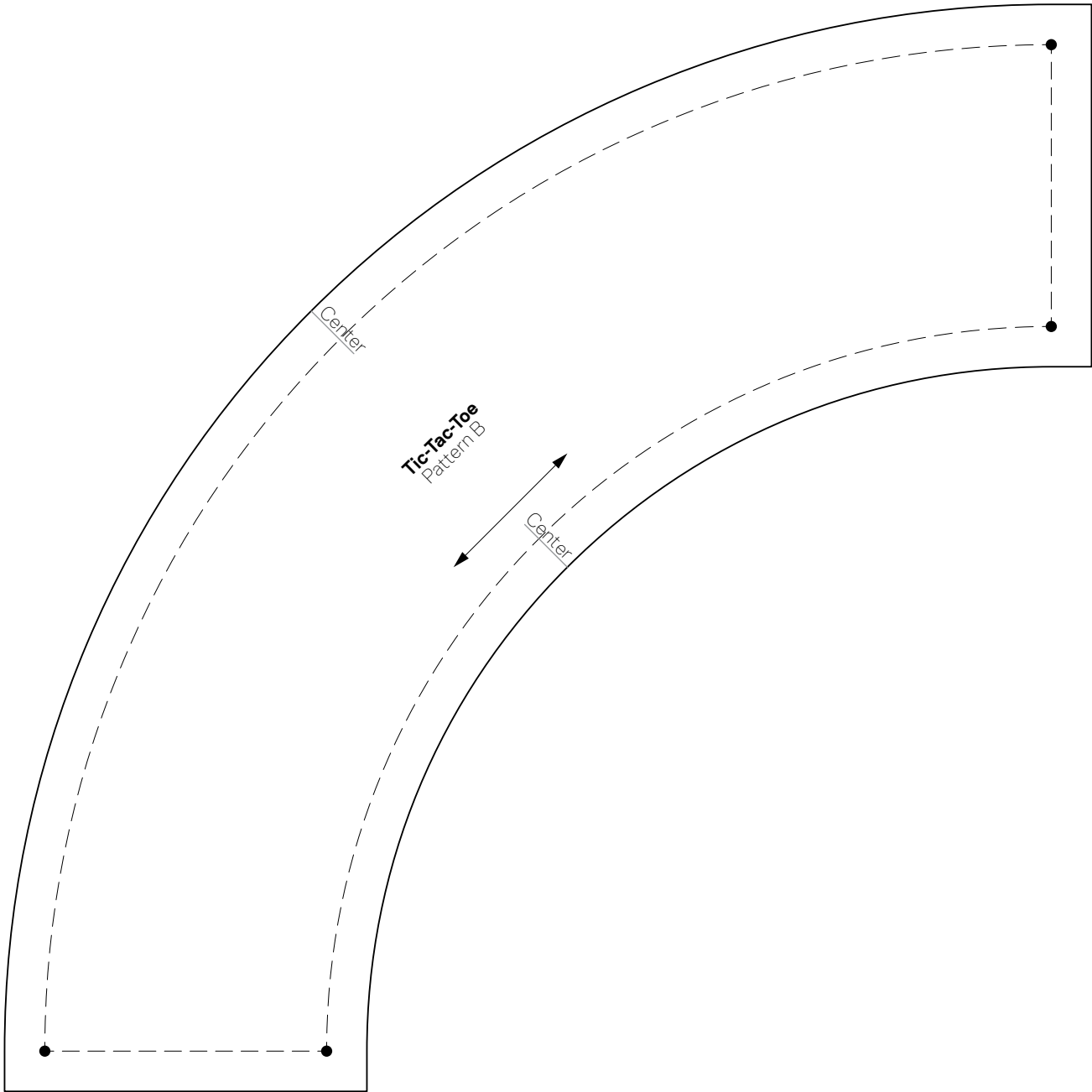


This box should measure 1".



*** NOTE:** When printing a downloadable pdf, set Page Scaling preference to NONE to print patterns at 100%. Do NOT "Shrink to Fit" or "Fit to Printable Area."

Project: In the Loop



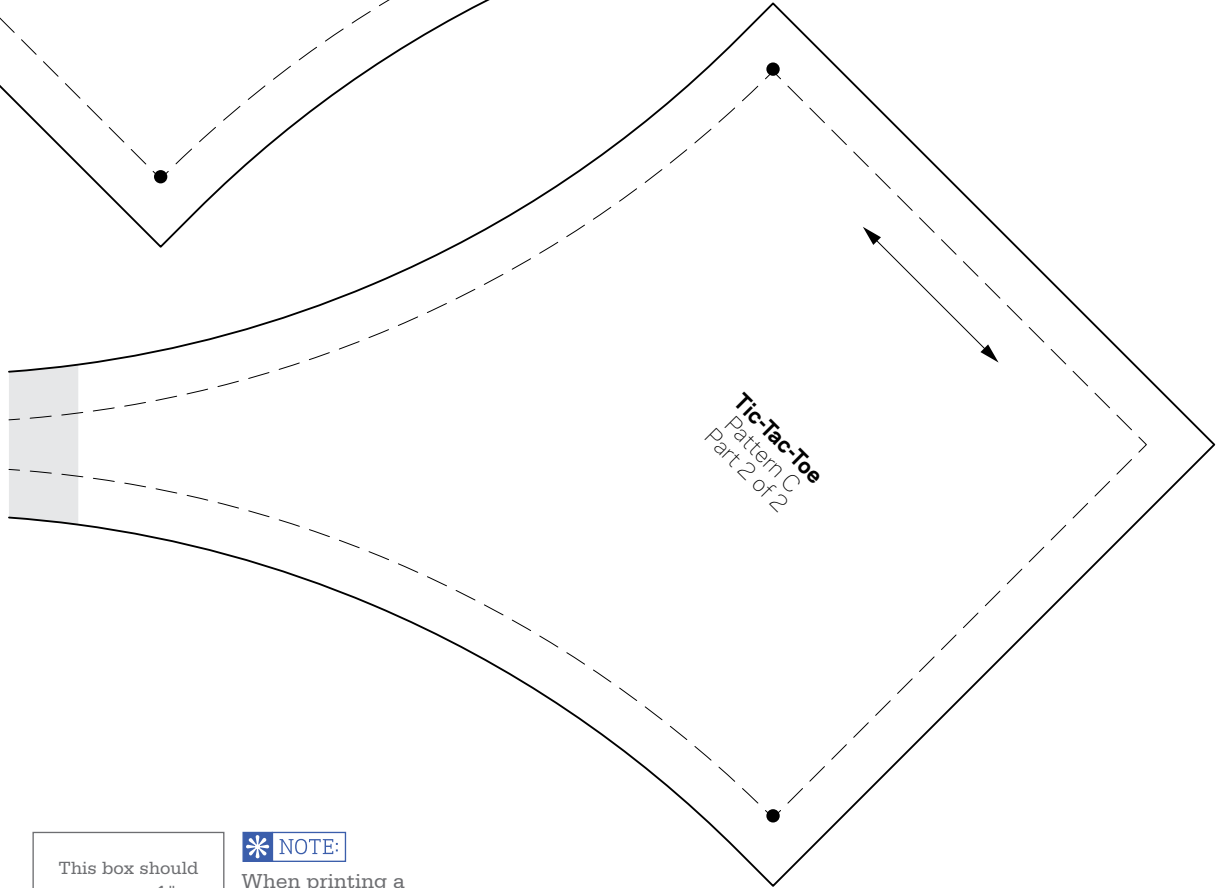
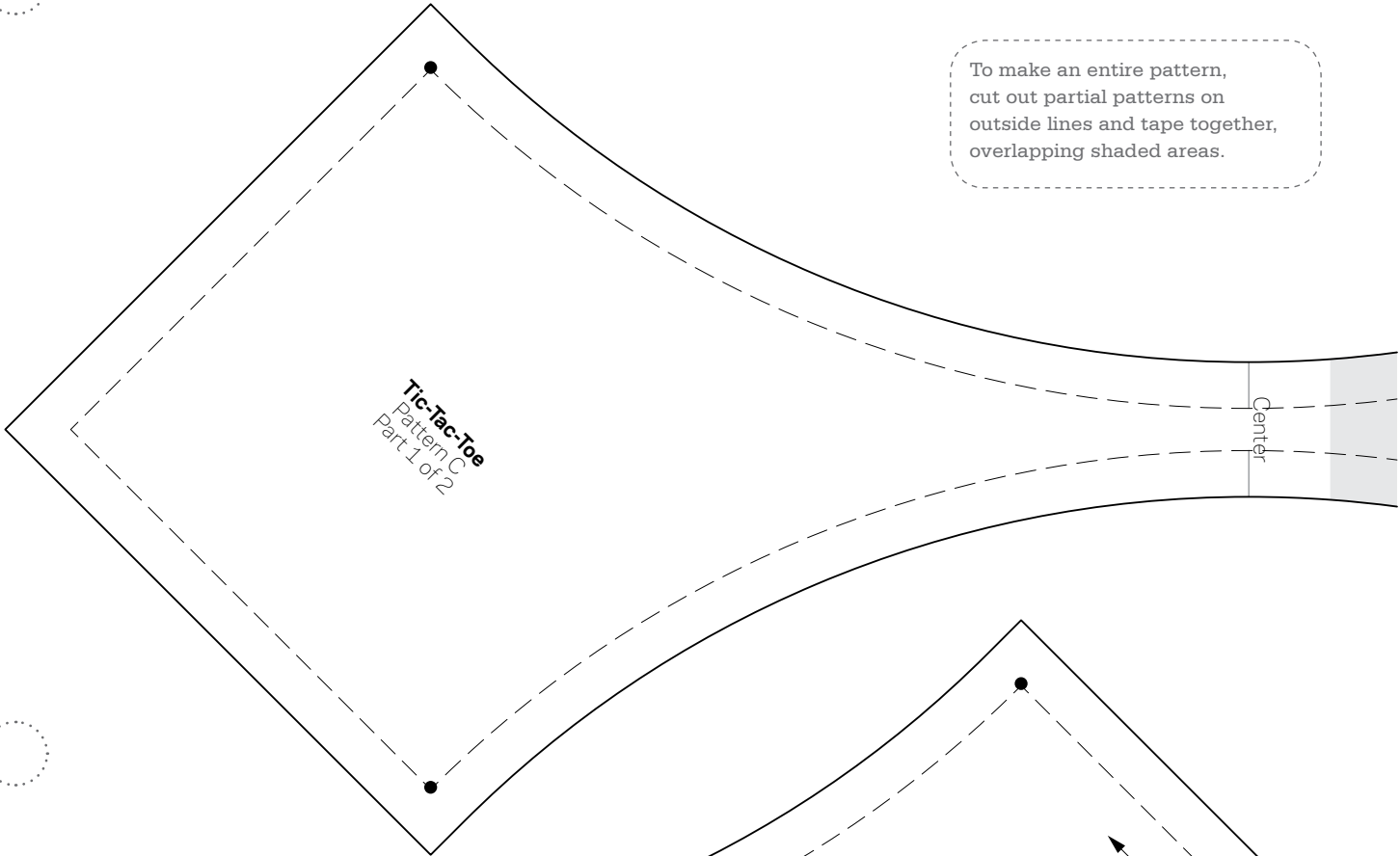
This box should measure 1".

← 1" →

*** NOTE:**
When printing a downloadable pdf, set Page Scaling preference to NONE to print patterns at 100%. Do NOT "Shrink to Fit" or "Fit to Printable Area."

Project: In the Loop

To make an entire pattern, cut out partial patterns on outside lines and tape together, overlapping shaded areas.

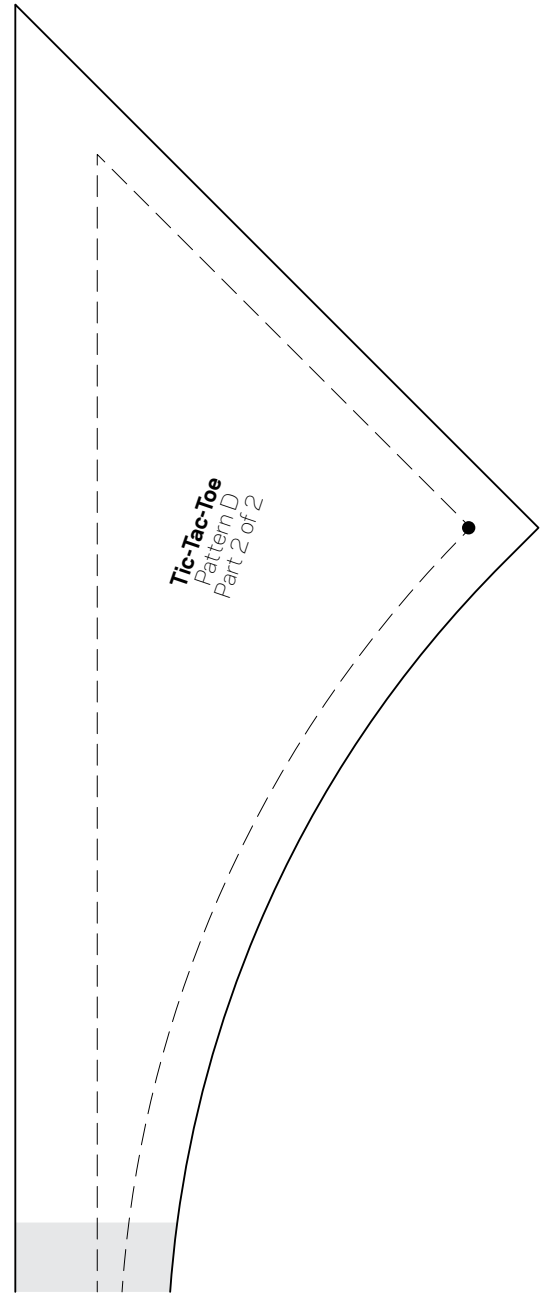
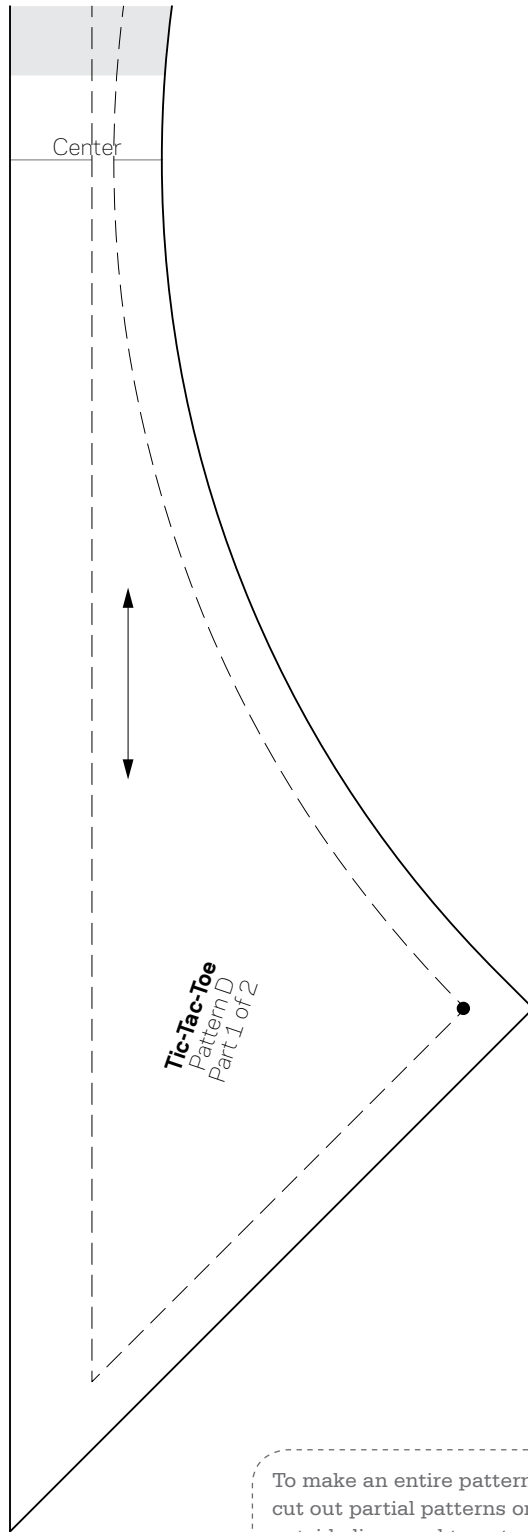


This box should measure 1".

← 1" →

*** NOTE:**
 When printing a downloadable pdf, set Page Scaling preference to NONE to print patterns at 100%. Do NOT "Shrink to Fit" or "Fit to Printable Area."

Project: Tic-Tac-Toe



To make an entire pattern, cut out partial patterns on outside lines and tape together, overlapping shaded areas.

This box should measure 1".

← 1" →

*** NOTE:** When printing a downloadable pdf, set Page Scaling preference to NONE to print patterns at 100%. Do NOT "Shrink to Fit" or "Fit to Printable Area."

Make and Use Templates

Make Templates

A template is a pattern made from extra-sturdy material so you can trace around it many times without wearing away the edges. Acrylic templates for many common shapes are available at quilt shops. Or you can make your own by duplicating printed patterns on template plastic.

To make permanent templates, purchase easy-to-cut template plastic, available at quilt shops and crafts supply stores. Lay the plastic over a printed pattern. Trace the pattern onto the plastic using a ruler and a permanent marker to ensure straight lines, accurate corners, and permanency.

For hand piecing and appliqué, make templates the exact size finished pieces will be (without seam allowances). For piecing, this means tracing the patterns' dashed lines.

For machine piecing, make templates that include seam allowances by tracing the patterns' solid and dashed lines onto the template plastic.

For easy reference, mark each template with its letter designation, grain line (if noted on the pattern), and block name. Cut out the traced shapes on their outside lines. Verify each template's shape and size by placing it over its printed pattern. Templates must be accurate; errors, however small, will compound many times as you assemble a quilt. To check templates' accuracy, make a test block before cutting the fabric pieces for an entire quilt.

Use Templates

To mark on fabric, use a pencil, white dressmaker's pencil, chalk, or a special fabric marker that makes a thin, accurate line. Do not use a ballpoint or ink pen; it may bleed if washed. Test all marking tools on a fabric scrap before using them.

To make pieces for hand piecing or appliqué, place a template facedown on the wrong side of the fabric and trace. Then reposition the template at least $\frac{1}{2}$ " away from the previous tracing (**Diagram 1**), trace again, and repeat. The lines you trace on the fabric are sewing lines. Mark cutting lines $\frac{1}{4}$ " away from the sewing lines, or estimate the distance by eye when cutting out the pieces with scissors. For hand piecing, add a $\frac{1}{4}$ " seam allowance; for hand appliqué, add a $\frac{3}{16}$ " seam allowance.

Because templates used to make pieces for machine piecing have seam allowances included, you can use common tracing lines for efficient cutting. Place a template facedown on the wrong side of the fabric and trace. Then reposition the template without a space between it and the previous tracing (**Diagram 2**); trace again and repeat. Using a rotary cutter and ruler, cut pieces out, cutting precisely on the drawn lines.

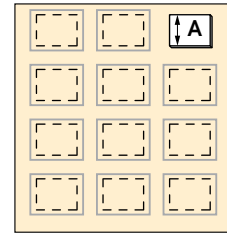


DIAGRAM 1

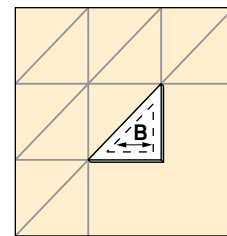


DIAGRAM 2