

## Project: Mitten Stocking

DESIGNER: AMY BARICKMAN OF INDYGO JUNCTION ([INDYGOJUNCTION.COM](http://INDYGOJUNCTION.COM))



Hand-stitch holiday motifs to a mitten shape for a stocking to hide presents or a cute gift for friends!

## Project: Mitten Stocking

### Materials

- 9×12" pieces wool felt: 3 of red, 1 each of turquoise and yellow
- Fine-point marker
- Clear template plastic
- Scissors
- Sewing machine
- Embroidery floss to match wool felt pieces
- Embroidery needle
- Use a ½" seam allowance unless otherwise stated.

### Step 1

Patterns are on pages 5–6. Using a fine-point marker, trace patterns onto clear template plastic. Cut out templates on drawn lines (photo 1).

### Step 2

From red felt, cut two of Pattern A mitten and one 2½×12" rectangle for handle. From turquoise felt, cut one of Pattern B tree. From yellow felt, cut three of Pattern C star (photo 2).

### Step 3

Position the B tree piece 2" from bottom edge of one A mitten piece; pin (photo 3).

### Step 4

Cut an 18" length of turquoise embroidery floss. Thread all six strands through embroidery needle; knot at end. Bring needle up from wrong side of mitten piece, about ¼" from edge of tree piece (photo 4).

### Step 5

Hand-stitch around tree piece to attach to mitten piece. Knot floss end on wrong side and trim off excess floss (photo 5).

**TIP:** If desired, use a pencil to lightly mark stitching lines ¼" from edge of appliqué pieces.

### Step 6

Using three C star pieces and yellow embroidery floss, hand-stitch stars ½" from bottom edge of mitten piece to make mitten top (photo 6).

### Step 7

With right sides together, use a ½" seam allowance to machine-sew together mitten top and remaining mitten piece, leaving top edge open, to make mitten body (photo 7).

**TIP:** For smooth edges, slow down when sewing around curves.

### Step 8

Clip seams around thumb and inner curve of mitten to reduce bulk (and to make turning right side out easier) (photo 8).

### Step 9

Fold top edge of mitten body ½" to wrong side; pin. Using red floss, hand-stitch to hem top edge. Turn right side out (photo 9).

### Step 10

Fold red felt 2½×12" rectangle in half lengthwise; crease. Open and refold so each long edge meets at center crease; fold again to make a ⅝×12" piece. Machine-stitch along double-fold edge through all layers to make handle (photo 10).

### Step 11

Place ends of handle on inside of mitten body along side seams. Hand-stitch in place to secure handle and complete mitten (photo 11).

Project: Mitten Stocking



PHOTO 1



PHOTO 2



PHOTO 3



PHOTO 4

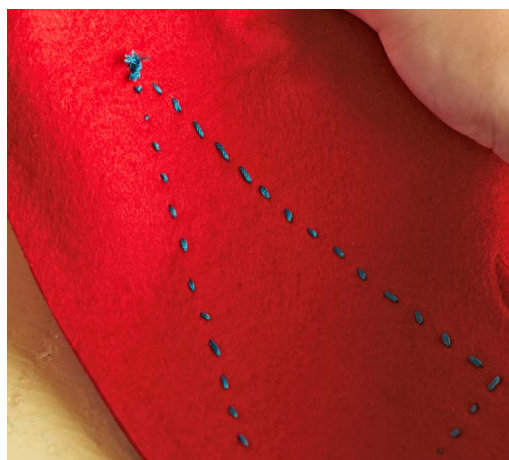


PHOTO 5



PHOTO 6

Project: Mitten Stocking



PHOTO 7



PHOTO 8



PHOTO 9



PHOTO 10

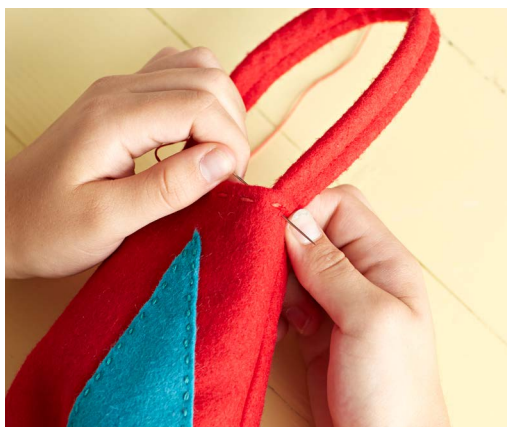
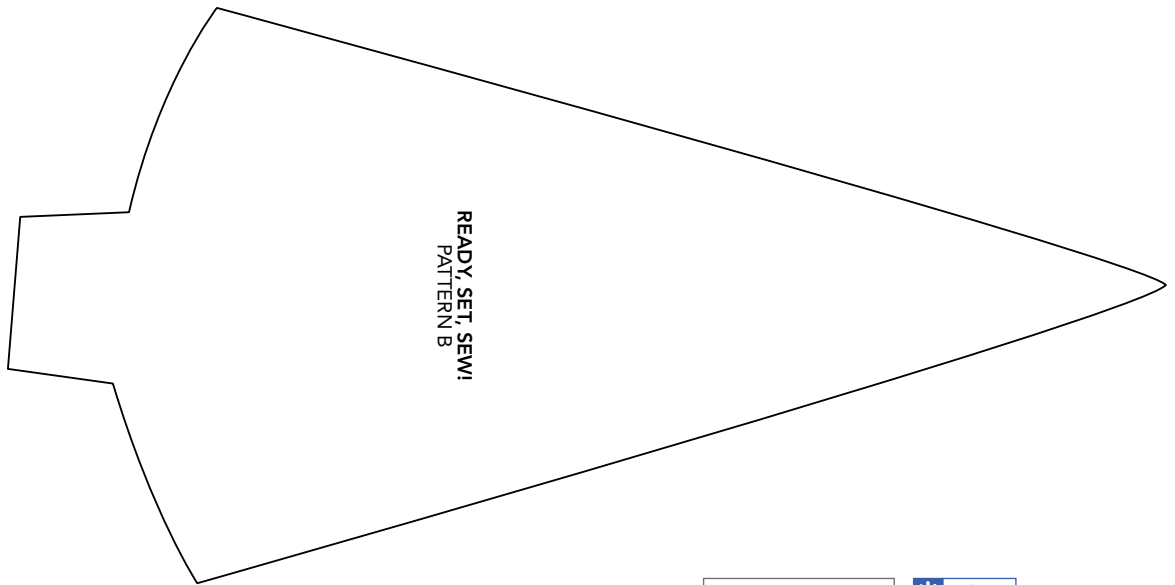
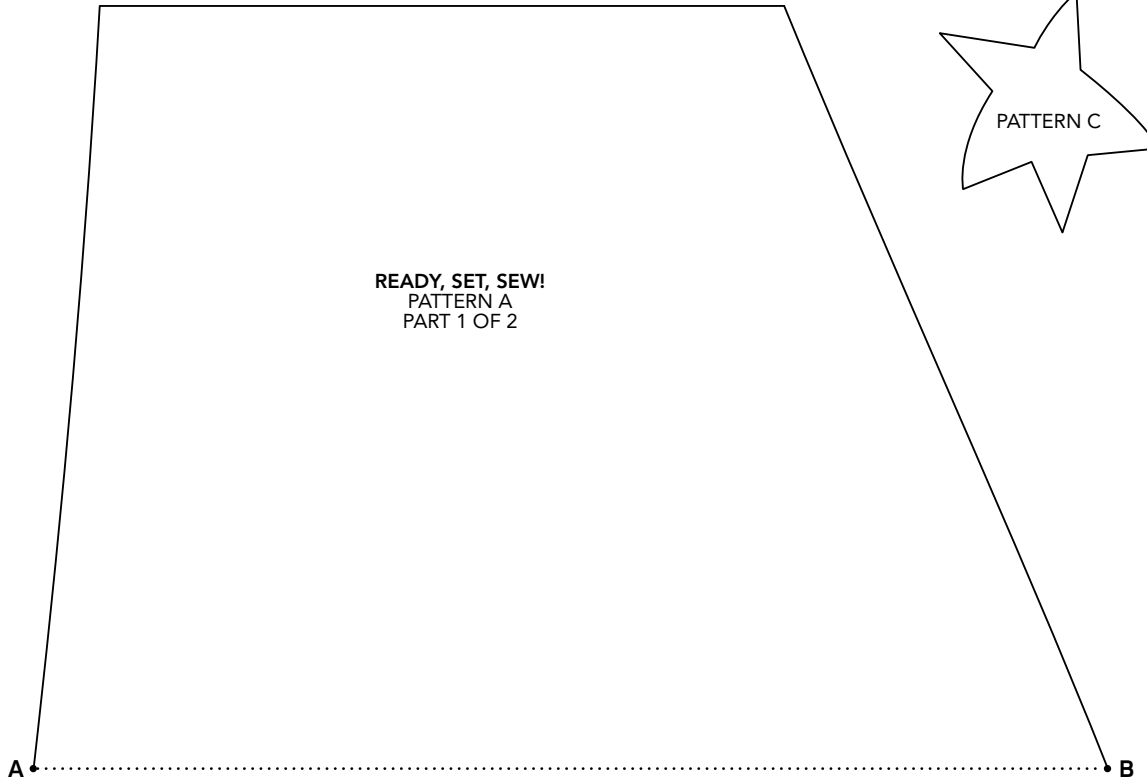
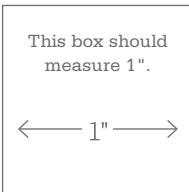


PHOTO 11

Project: Mitten Stocking

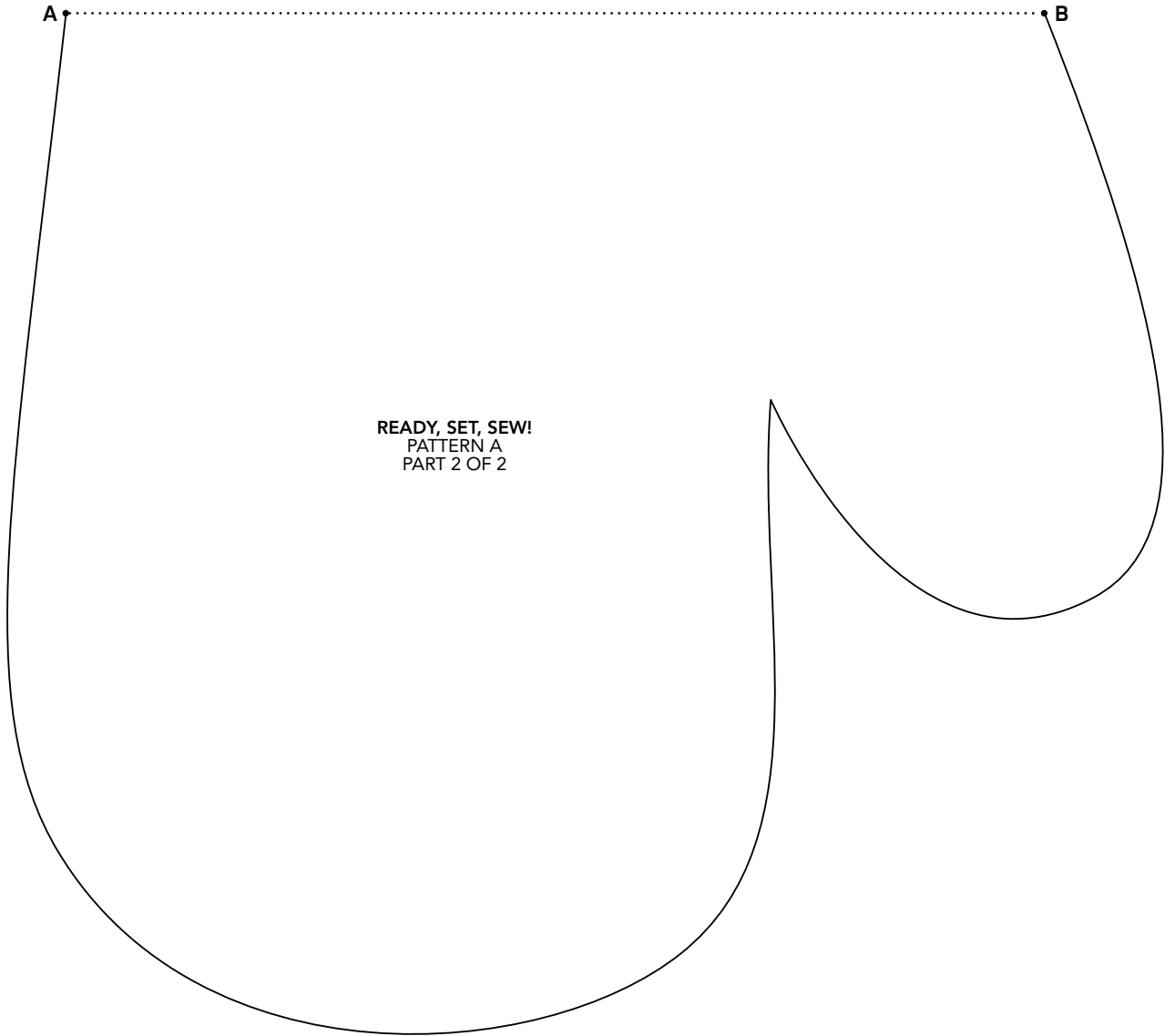


To make an entire pattern, cut out partial patterns on outside lines and tape together, matching dots and letters.



**\* NOTE:**  
When printing a downloadable pdf, set Page Scaling preference to NONE to print patterns at 100%. Do NOT "Shrink to Fit" or "Fit to Printable Area."

Project: Ready, Set, Sew



READY, SET, SEW!  
PATTERN A  
PART 2 OF 2

To make an entire pattern,  
cut out partial patterns on outside  
lines and tape together, matching  
dots and letters.

This box should  
measure 1".



**\* NOTE:**

When printing a  
downloadable pdf, set Page  
Scaling preference to NONE  
to print patterns at 100%.  
Do NOT "Shrink to Fit"  
or "Fit to Printable Area."