

Project: Joyful Stocking

DESIGNER: LINDA LUM DEBONO



Set aside a few hours to adorn the mantel with stockings styled for everyone in the family.

## Project: Joyful Stocking

### Materials

- $\frac{3}{4}$  yard purple tone-on-tone
- $\frac{1}{4}$  yard multicolor geometric
- Scraps of assorted green dot
- 1 yard lining fabric
- 25×34" batting or crafts fleece
- $\frac{1}{2}$  yard  $\frac{5}{8}$ "-wide black-and-white check, wire-edge ribbon
- Clear monofilament thread
- Lightweight fusible web
- Fabric stabilizer
- Machine-embroidery thread to match appliqués

Finished stockings: 13 $\frac{1}{2}$ ×22"

Yardages and cutting instructions are based on 42" of usable fabric width.

Measurements include a  $\frac{1}{4}$ " seam allowance. Sew with right sides together unless otherwise stated.

### Cut Fabric

Cut pieces in the following order. Patterns are on pages 3-9. To make and use templates, see "Make and Use Templates" on page 10.

To use fusible web for appliquéd letters J, O, Y, complete the following steps.

1. Lay fusible web, paper side up, over letters J, O, and Y. Use a pencil to trace each letter once, leaving at least  $\frac{1}{2}$ " between tracings.
2. Cut out each fusible-web letter roughly  $\frac{1}{4}$ " outside traced lines. Following manufacturer's instructions, press fusible-web letters onto backs of assorted green dot scraps. Let cool, then cut out fabric letters on drawn lines; peel off paper backings.

### From purple tone-on-tone, cut:

- 1 each of Patterns A and A reversed

### From multicolor geometric, cut:

- 1—4 $\frac{1}{2}$ ×22 $\frac{1}{2}$ " strip

### From lining fabric, cut:

- 1 each of Patterns A and A reversed

### Assemble Joy Stocking

1. Layer stocking front over fabric stabilizer. Arrange letters J, O, and Y on stocking front. Fuse in place; let cool.

2. Stitch around edges of each letter with a narrow zigzag stitch.

3. Layer stocking batting pieces on wrong side of stocking front A piece and purple A reversed stocking back. Machine-baste a scant  $\frac{1}{4}$ " from edges. Machine-quilt front and back as desired using clear monofilament thread.

4. Sew together stocking front and lining A reversed piece along straight edge (**Diagram 2**). Repeat for stocking back and lining A piece. Open each shape flat and press seams toward lining. Layer a front/lining piece on top of a back/lining piece.

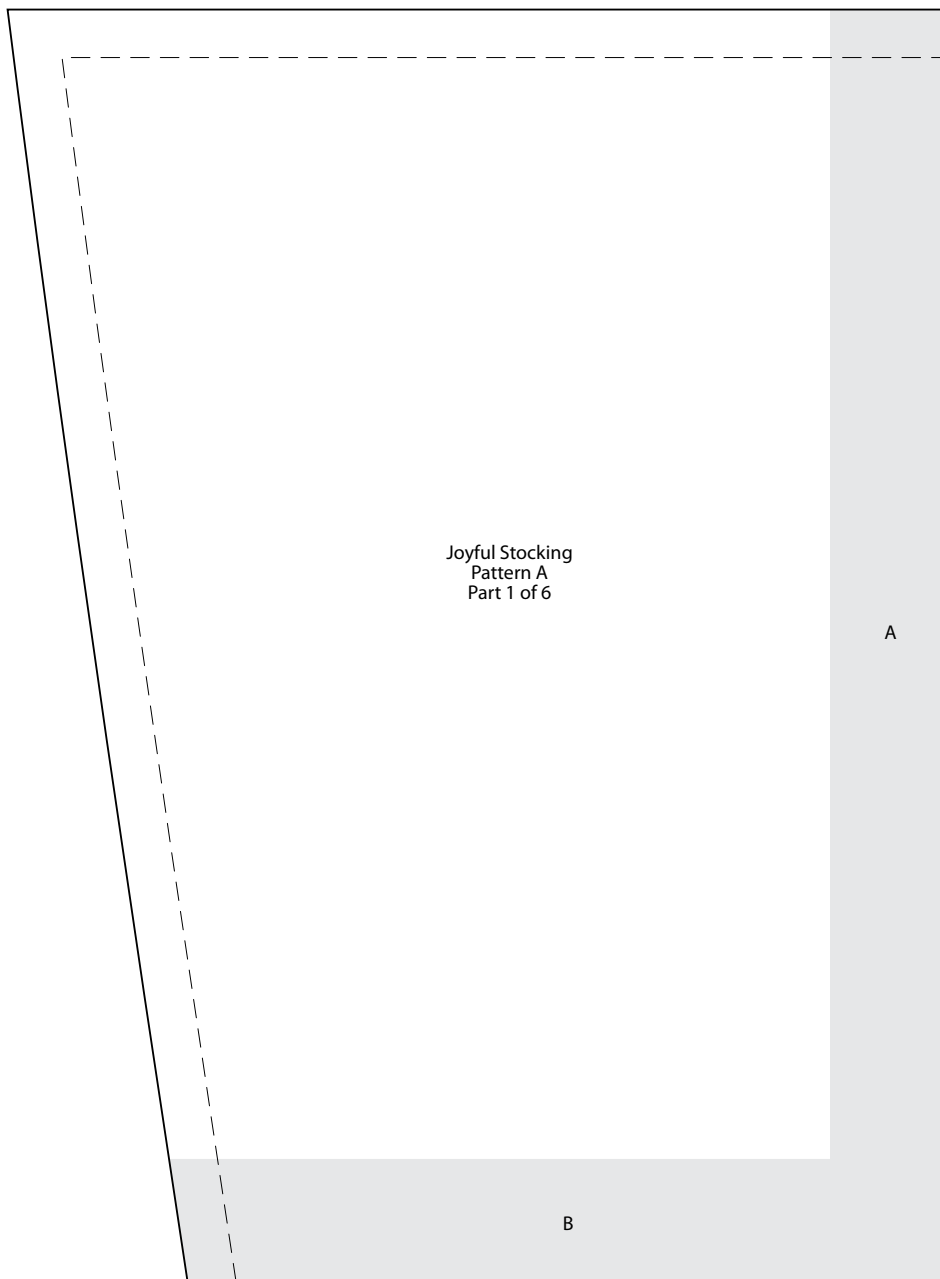
5. Sew together front/lining piece and back/lining piece, leaving an opening for turning in the lining (**Diagram 3**). Clip into seam allowance at  $\frac{1}{4}$ " intervals at curves. Turn stocking right side out through opening; press. Sew opening closed. Insert lining into stocking. Topstitch  $\frac{1}{8}$ " from edge around top of stocking.

6. Fold ribbon in half, matching raw

edges. Whipstitch fold to inside at top right of stocking. Knot ends of ribbon.

7. Fold multicolor geometric strip in half lengthwise with right sides together. Stitch along long raw edge. Turn strip right side out; press, turning under short raw edges  $\frac{1}{4}$ ". Topstitch along short edges. Pleat strip, pinning a  $\frac{1}{4}$ " pleat every 2" (you will have nine pleats total).

8. Pin pleated cuff around top edge of stocking with short ends meeting on right side. Topstitch cuff to stocking.



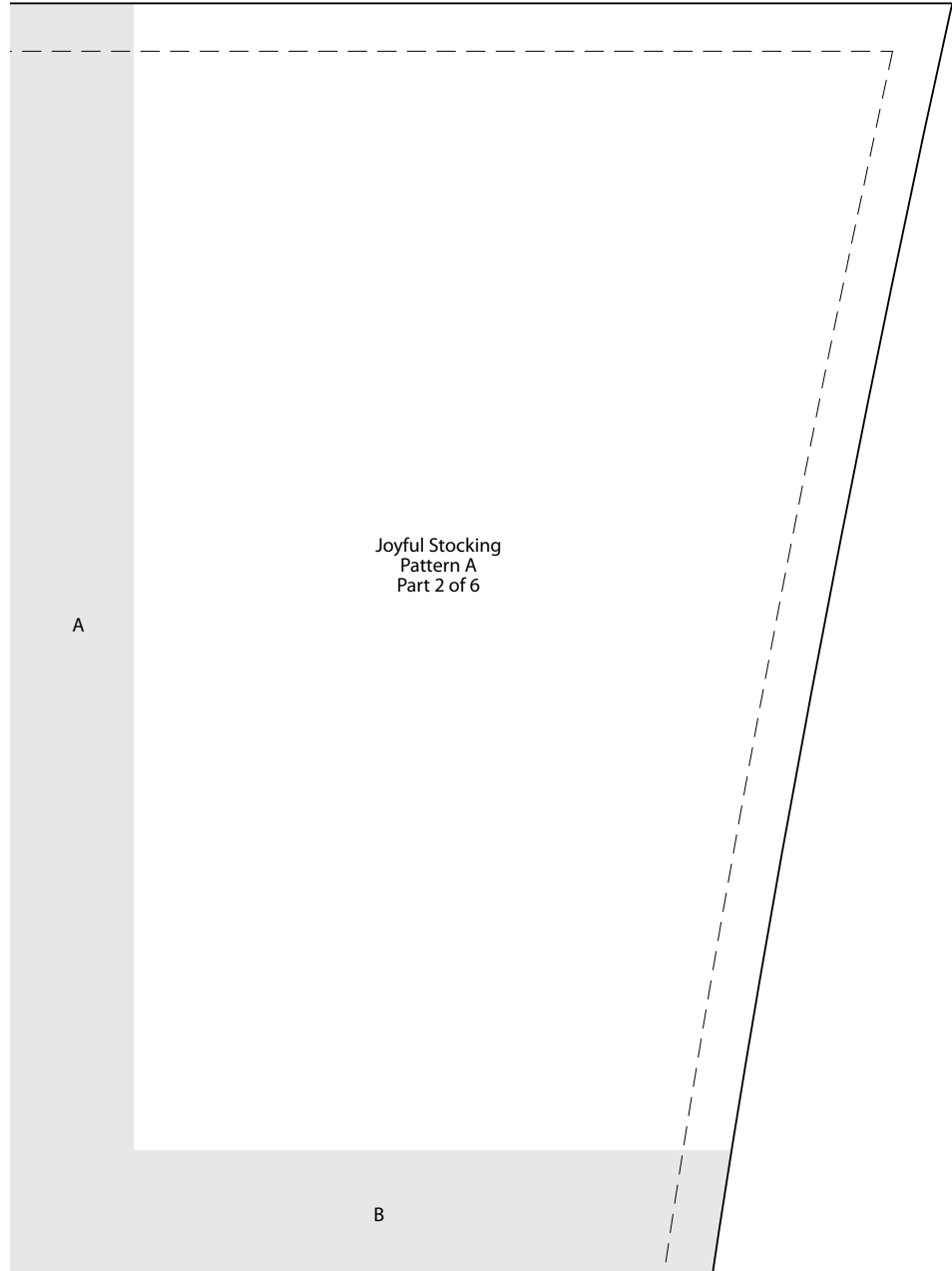
**To make an entire pattern,**  
cut out partial patterns on  
outside lines and tape together,  
overlapping shaded areas.

This box should  
measure 1".



**\* NOTE:**

When printing a downloadable  
pdf, set Page Scaling preference  
to NONE to print patterns at  
100%. Do NOT "Shrink to Fit"  
or "Fit to Printable Area."



**To make an entire pattern,**  
cut out partial patterns on  
outside lines and tape together,  
overlapping shaded areas.

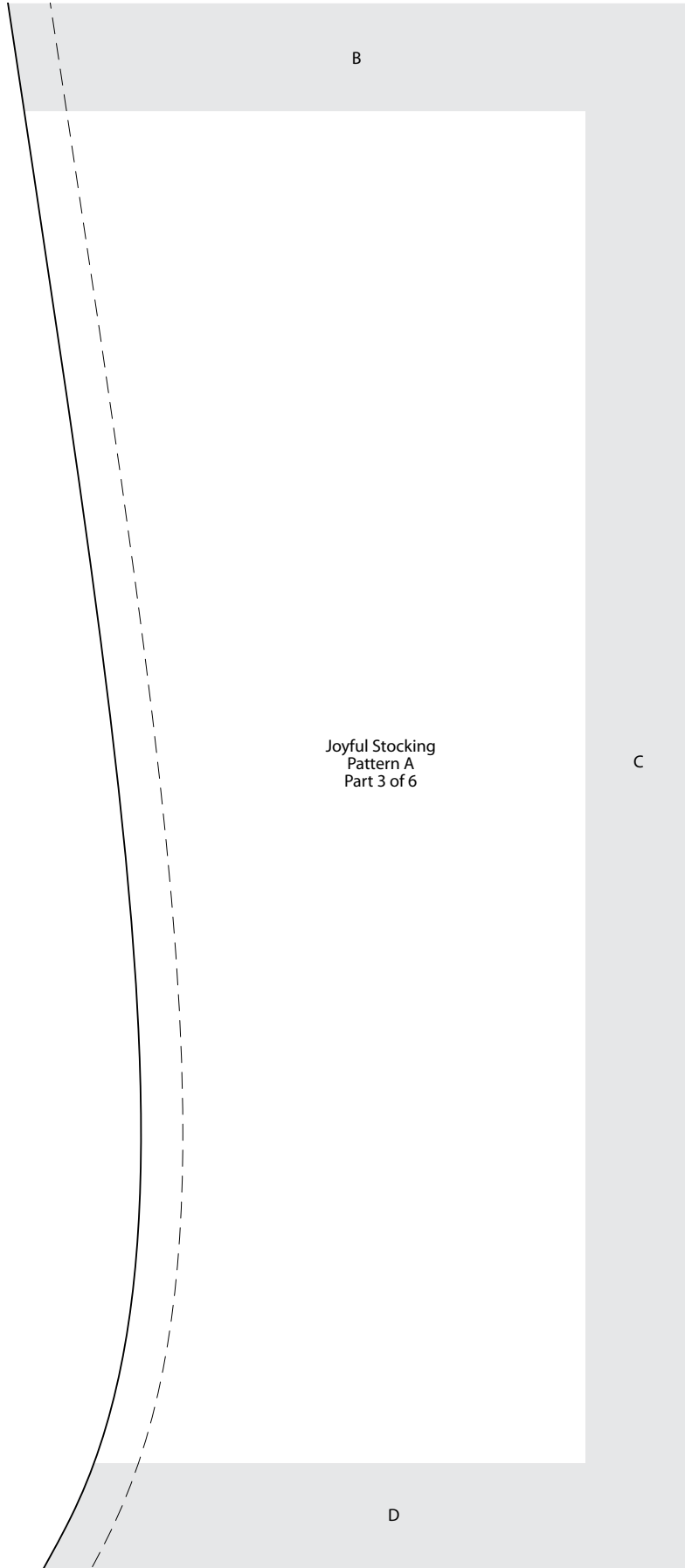
This box should  
measure 1".

← 1" →

**\* NOTE:**

When printing a downloadable  
pdf, set Page Scaling preference  
to NONE to print patterns at  
100%. Do NOT "Shrink to Fit"  
or "Fit to Printable Area."

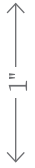
Pattern may be downloaded for personal use only. No electronic or printed reproduction permitted without the prior written consent of Meredith Corporation. ©Meredith Corporation 2012. All rights reserved.



**\* NOTE:**

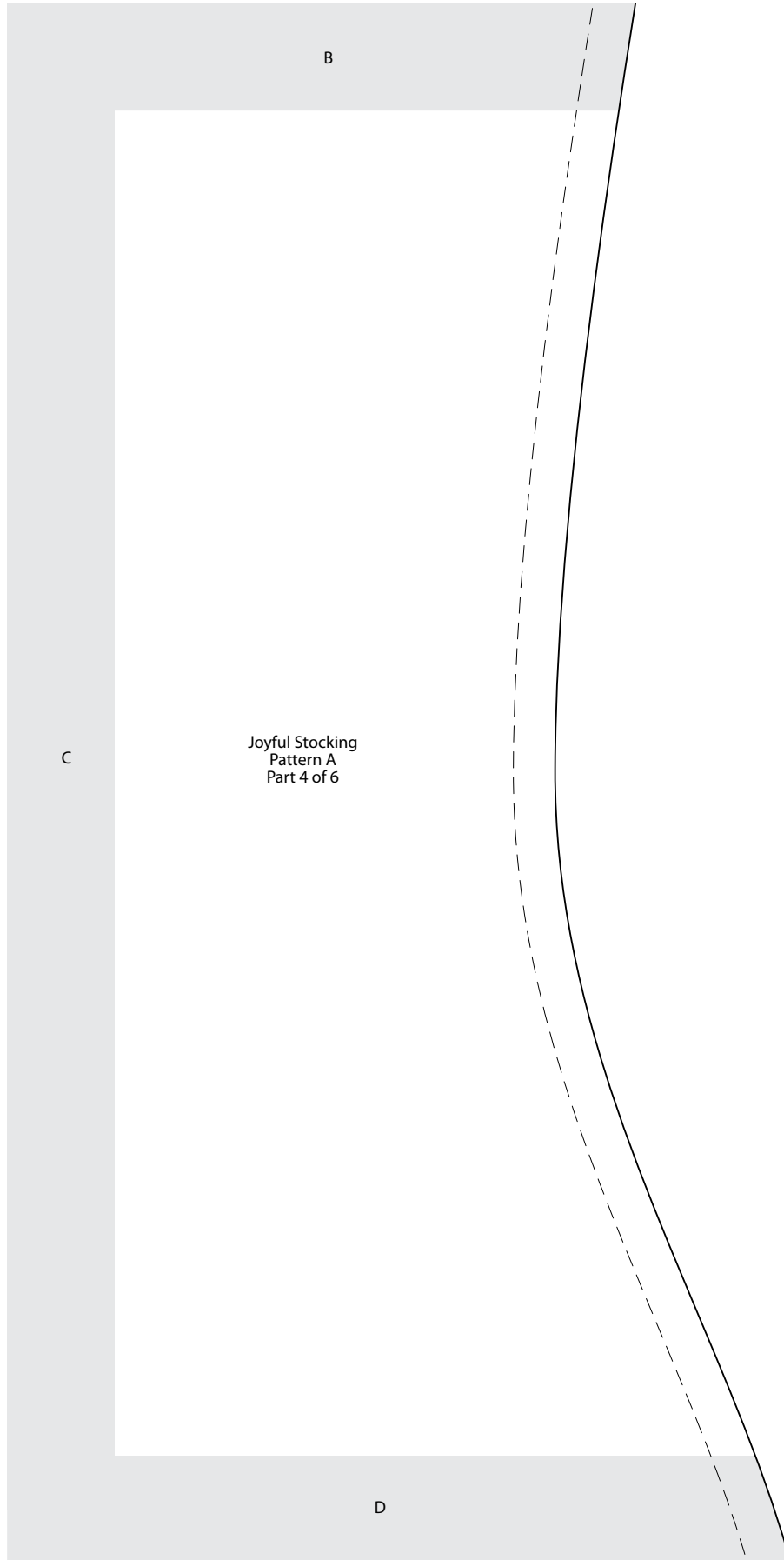
When printing a downloadable pdf, set Page Scaling preference to NONE to print patterns at 100%. Do NOT "Shrink to Fit" or "Fit to Printable Area."

This box should measure 1".



**To make an entire pattern,** cut out partial patterns on outside lines and tape together, overlapping shaded areas.

Pattern may be downloaded for personal use only. No electronic or printed reproduction permitted without the prior written consent of Meredith Corporation. ©Meredith Corporation 2012. All rights reserved.

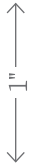


Joyful Stocking  
Pattern A  
Part 4 of 6

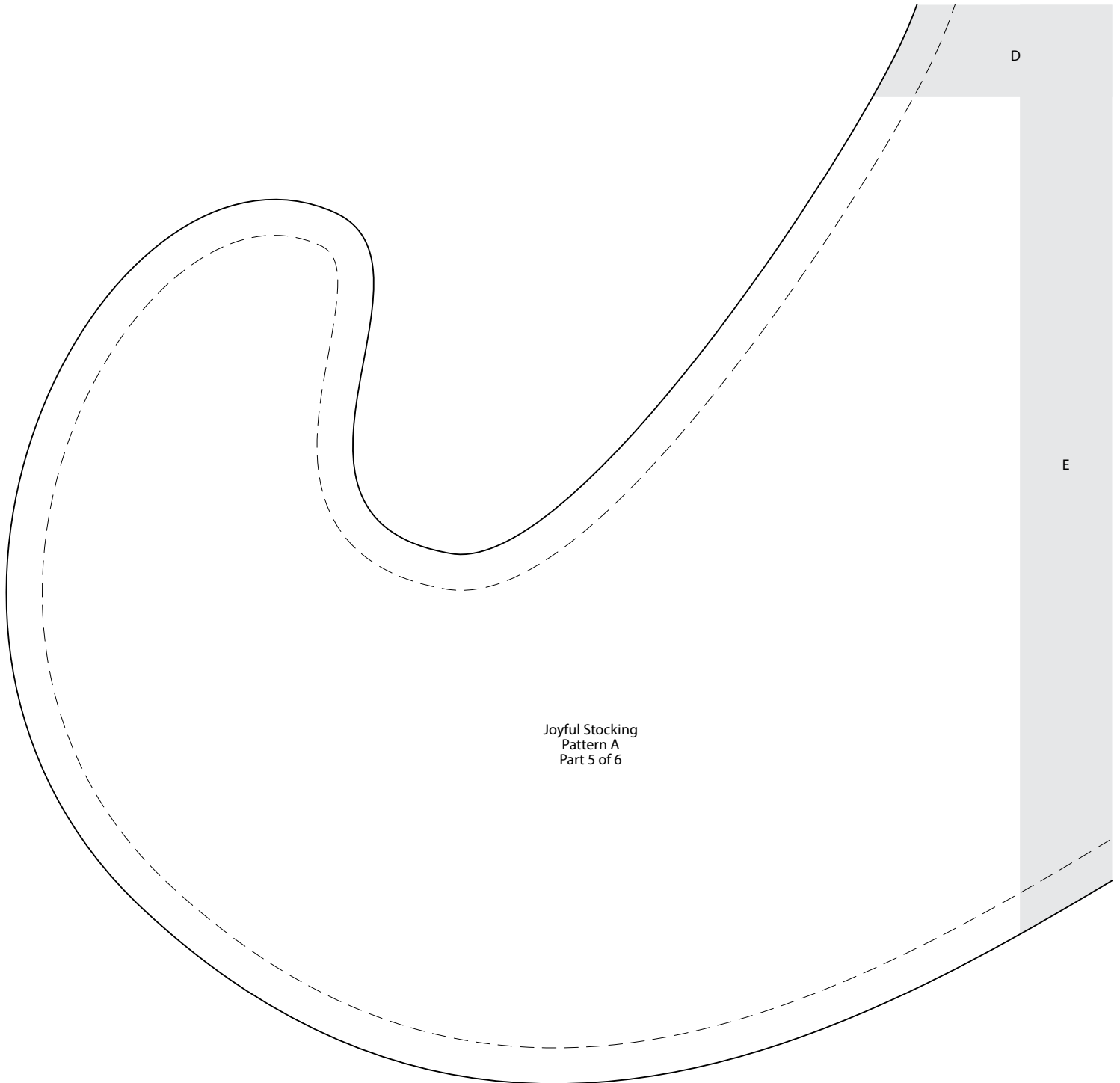
**\* NOTE:**

When printing a downloadable pdf, set Page Scaling preference to NONE to print patterns at 100%. Do NOT "Shrink to Fit" or "Fit to Printable Area."

This box should  
measure 1".



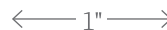
**To make an entire pattern,**  
cut out partial patterns on  
outside lines and tape together,  
overlapping shaded areas.



Joyful Stocking  
Pattern A  
Part 5 of 6

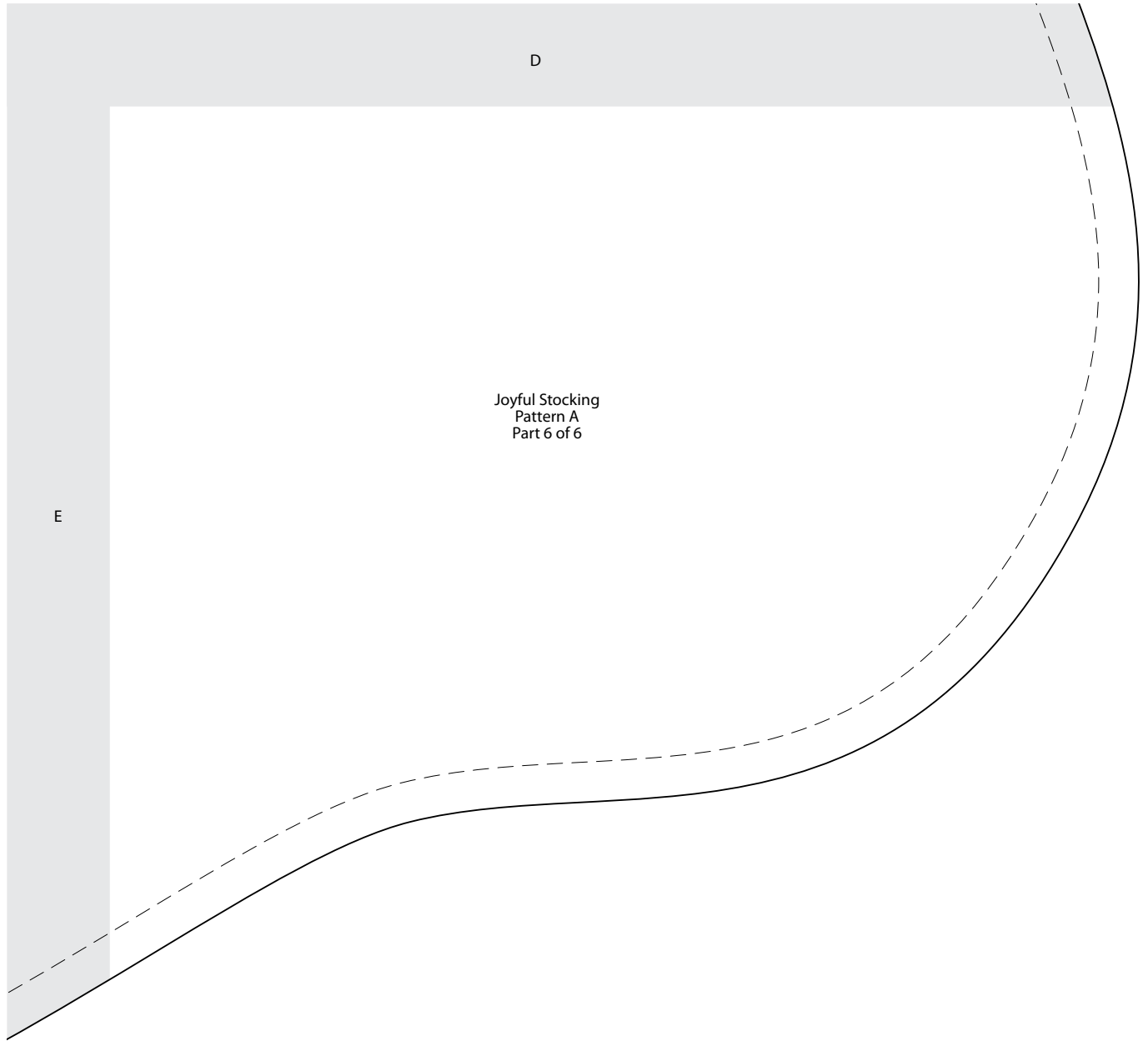
**To make an entire pattern,**  
cut out partial patterns on  
outside lines and tape together,  
overlapping shaded areas.

This box should  
measure 1".



**\* NOTE:**

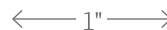
When printing a downloadable  
pdf, set Page Scaling preference  
to NONE to print patterns at  
100%. Do NOT "Shrink to Fit"  
or "Fit to Printable Area."



Joyful Stocking  
Pattern A  
Part 6 of 6

**To make an entire pattern,**  
cut out partial patterns on  
outside lines and tape together,  
overlapping shaded areas.

This box should  
measure 1".



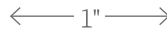
**\* NOTE:**

When printing a downloadable  
pdf, set Page Scaling preference  
to NONE to print patterns at  
100%. Do NOT "Shrink to Fit"  
or "Fit to Printable Area."



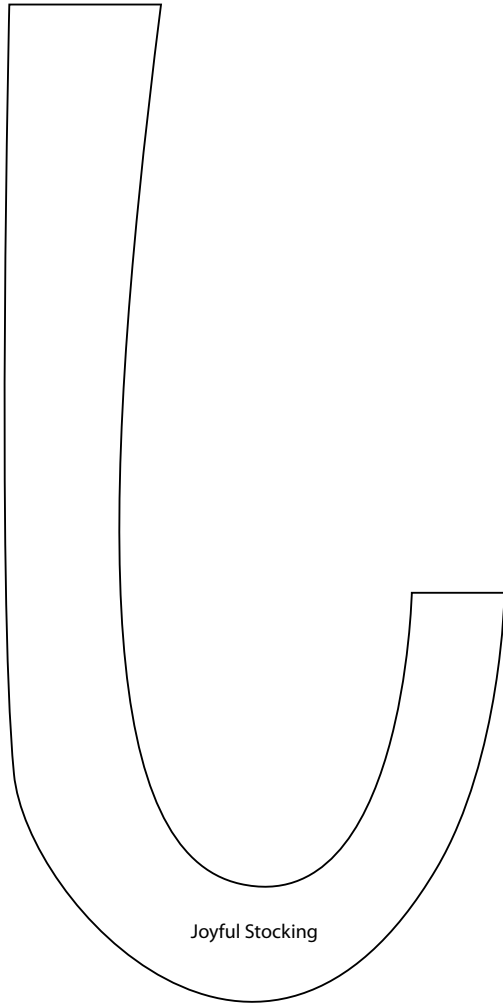
Project: Joyful Stocking

This box should  
measure 1".

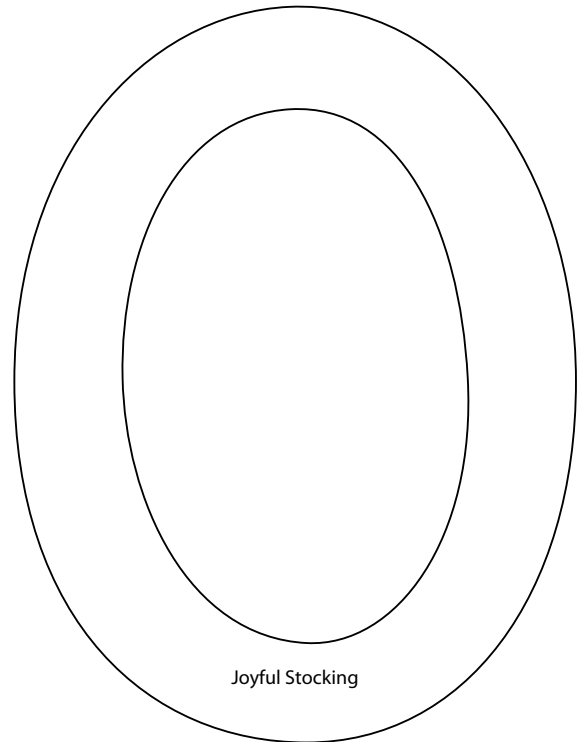


**\* NOTE:**

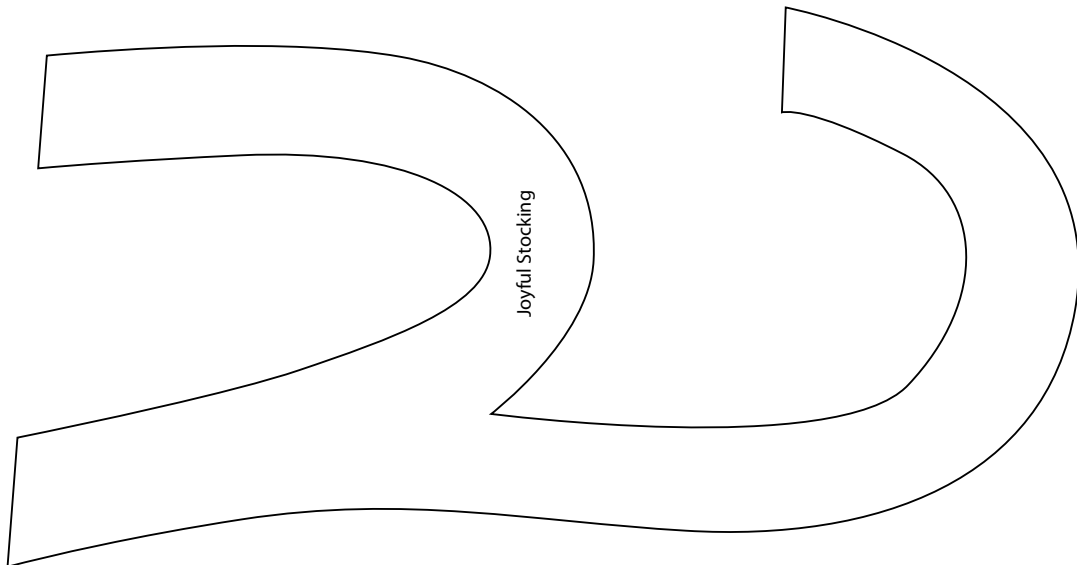
When printing a downloadable pdf, set Page Scaling preference to NONE to print patterns at 100%. Do NOT "Shrink to Fit" or "Fit to Printable Area."



Joyful Stocking



Joyful Stocking



Joyful Stocking

### Make Templates

A template is a pattern made from extra-sturdy material so you can trace around it many times without wearing away the edges. Acrylic templates for many common shapes are available at quilt shops. Or you can make your own by duplicating printed patterns on template plastic.

To make permanent templates, purchase easy-to-cut template plastic, available at quilt shops and crafts supply stores. Lay the plastic over a printed pattern. Trace the pattern onto the plastic using a ruler and a permanent marker to ensure straight lines, accurate corners, and permanency.

For hand piecing and appliqué, make templates the exact size finished pieces will be (without seam allowances). For piecing, this means tracing the patterns' dashed lines.

For machine piecing, make templates that include seam allowances by tracing the patterns' solid and dashed lines onto the template plastic.

For easy reference, mark each template with its letter designation, grain line (if noted on the pattern), and block name. Cut out the traced shapes on their outside lines. Verify each template's shape and size by placing it over its printed pattern. Templates must be accurate; errors, however small, will compound many times as you assemble a quilt. To check templates' accuracy, make a test block before cutting the fabric pieces for an entire quilt.

### Use Templates

To mark on fabric, use a pencil, white dressmaker's pencil, chalk, or a special fabric marker that makes a thin, accurate line. Do not use a ballpoint or ink pen; it may bleed if washed. Test all marking tools on a fabric scrap before using them.

To make pieces for hand piecing or appliqué, place a template facedown on the wrong side of the fabric and trace. Then reposition the template at least  $\frac{1}{2}$ " away from the previous tracing (**Diagram 1**), trace again, and repeat. The lines you trace on the fabric are sewing lines. Mark cutting lines  $\frac{1}{4}$ " away from the sewing lines, or estimate the distance by eye when cutting out the pieces with scissors. For hand piecing, add a  $\frac{1}{4}$ " seam allowance; for hand appliqué, add a  $\frac{3}{16}$ " seam allowance.

Because templates used to make pieces for machine piecing have seam allowances included, you can use common tracing lines for efficient cutting. Place a template facedown on the wrong side of the fabric and trace. Then reposition the template without a space between it and the previous tracing (**Diagram 2**); trace again and repeat. Using a rotary cutter and ruler, cut pieces out, cutting precisely on the drawn lines.

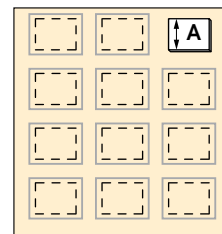


DIAGRAM 1

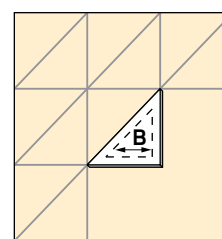


DIAGRAM 2