

Project: Winter Jewels Stocking Ornament

DESIGNER: JANN WILLIAMS



Embellish a handmade stocking ornament with bits of ribbon and beads this holiday season. The ornament has a small pocket, just the right size for a gift of folded cash or check.

Project: Winter Jewels Stocking Ornament

Materials

- 2—6×11" rectangles pink floral
- Polyester fiberfill
- 6"-long trim for cuff
- 12"-long $\frac{1}{8}$ "-wide ribbon: green
- Thread: light tan
- 14-millimeter bead
- 2—8-millimeter spacer beads
- 2—10-millimeter beads
- 3—5-millimeter beads
- Large-eye needle

Finished stocking ornament:
5 $\frac{1}{4}$ ×3 $\frac{1}{2}$ " (excluding hanging loop)

Make Stocking Template

Stocking Pattern is on page 3. For tips on making a pattern template, see "Make and Use Templates" on page 4.

Assemble Stocking

1. Place pink floral 6×11" rectangles right sides together on flat surface. Center Stocking Pattern on layered rectangles; trace, leaving approximately $\frac{1}{2}$ " on all sides for trimming.
2. Set your machine stitch length to 2.0 millimeter; sew together on pencil line, leaving an opening for turning (**Diagram 1**).
3. Cut out stocking shape a scant $\frac{1}{4}$ " outside of stitching line. Clip inner and outer curves and outer corner points.
4. Turn stocking right side out, gently working out points. Smooth edges and press flat.

5. Use eraser end of a pencil to push fiberfill into toe first, then loosely fill foot and leg to fold line (shown on pattern). Slip-stitch opening closed. Insert unstuffed top into stocking leg (**Diagram 2**). Press on fold line. Stitch 6"-long trim to right side of pressed edge. Fold trimmed edge down $\frac{1}{2}$ " to make cuff.
6. To make the beaded hanging loop (**Diagram 3**), use large-eye needle to pull $\frac{1}{8}$ "-wide ribbon through folded edge of stocking cuff, leaving a 2"-long tail. Knot ribbon tail in cuff to secure. Thread needle and ribbon above cuff through an 8-millimeter spacer bead, the 14-millimeter bead, then the remaining 8-millimeter spacer bead. Return needle and ribbon through beads, leaving 4" of ribbon free above beads, and pull through cuff, creating a second 2"-long tail below cuff. Knot second ribbon tail in cuff to secure. Tie an overhand knot in ribbon above and below beads to form hanging loop. Thread a 10-millimeter bead on each ribbon tail. Tie overhand knots to secure beads.

7. Referring to **Diagram 3**, sew 5-millimeter beads to stocking toe. If desired, embellish stocking with embroidery stitches, beads, or lace trim.

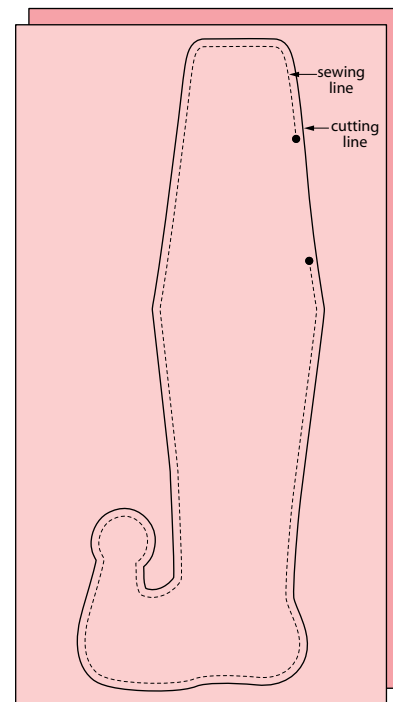


DIAGRAM 1

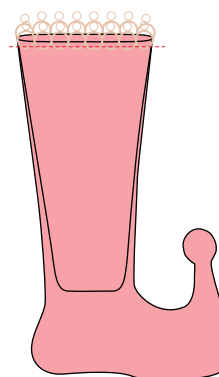
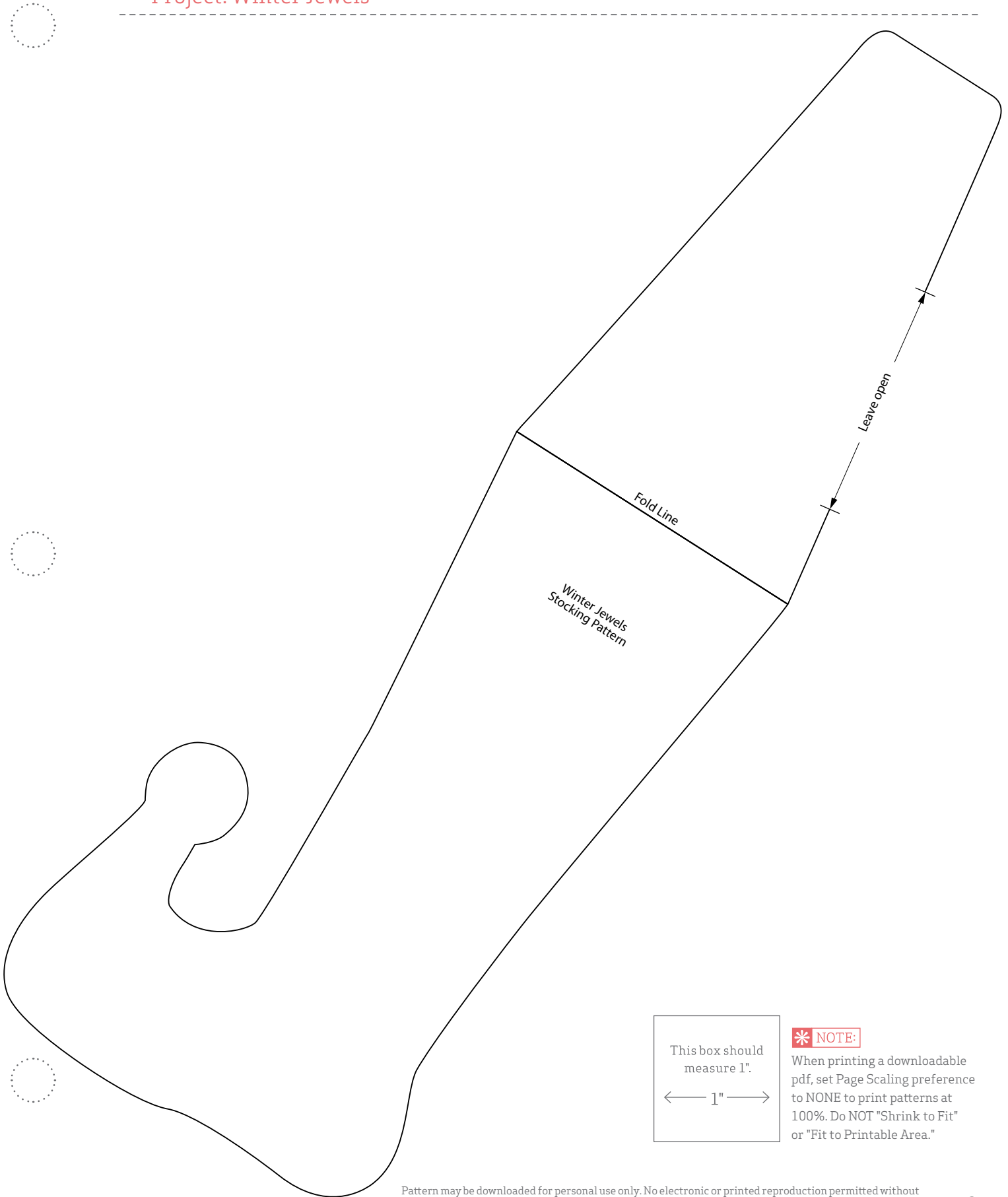


DIAGRAM 2



DIAGRAM 3

Project: Winter Jewels



This box should measure 1".
← 1" →

*** NOTE:**

When printing a downloadable pdf, set Page Scaling preference to NONE to print patterns at 100%. Do NOT "Shrink to Fit" or "Fit to Printable Area."

Make and Use Templates

Make Templates

A template is a pattern made from extra-sturdy material so you can trace around it many times without wearing away the edges. Acrylic templates for many common shapes are available at quilt shops. Or you can make your own by duplicating printed patterns on template plastic.

To make permanent templates, purchase easy-to-cut template plastic, available at quilt shops and crafts supply stores. Lay the plastic over a printed pattern. Trace the pattern onto the plastic using a ruler and a permanent marker to ensure straight lines, accurate corners, and permanency.

For hand piecing and appliqué, make templates the exact size finished pieces will be (without seam allowances). For piecing, this means tracing the patterns' dashed lines.

For machine piecing, make templates that include seam allowances by tracing the patterns' solid and dashed lines onto the template plastic.

For easy reference, mark each template with its letter designation, grain line (if noted on the pattern), and block name. Cut out the traced shapes on their outside lines. Verify each template's shape and size by placing it over its printed pattern. Templates must be accurate; errors, however small, will compound many times as you assemble a quilt. To check templates' accuracy, make a test block before cutting the fabric pieces for an entire quilt.

Use Templates

To mark on fabric, use a pencil, white dressmaker's pencil, chalk, or a special fabric marker that makes a thin, accurate line. Do not use a ballpoint or ink pen; it may bleed if washed. Test all marking tools on a fabric scrap before using them.

To make pieces for hand piecing or appliqué, place a template facedown on the wrong side of the fabric and trace. Then reposition the template at least $\frac{1}{2}$ " away from the previous tracing (**Diagram 1**), trace again, and repeat. The lines you trace on the fabric are sewing lines. Mark cutting lines $\frac{1}{4}$ " away from the sewing lines, or estimate the distance by eye when cutting out the pieces with scissors. For hand piecing, add a $\frac{1}{4}$ " seam allowance; for hand appliqué, add a $\frac{3}{16}$ " seam allowance.

Because templates used to make pieces for machine piecing have seam allowances included, you can use common tracing lines for efficient cutting. Place a template facedown on the wrong side of the fabric and trace. Then reposition the template without a space between it and the previous tracing (**Diagram 2**); trace again and repeat. Using a rotary cutter and ruler, cut pieces out, cutting precisely on the drawn lines.

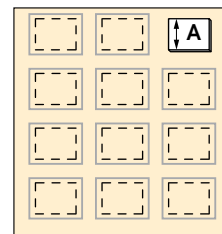


DIAGRAM 1

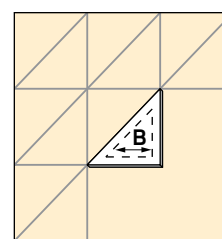


DIAGRAM 2