

Project: Scrappy Triangles

DESIGNER: MARI MARTIN FOR CONNECTING THREADS (CONNECTINGTHREADS.COM)



FABRICS are from the Mix It Up! collection by Jenni Calo for Connecting Threads (connectingthreads.com).

Triangle-squares in a vibrant mix of colors add plenty of texture to a small quilt. A bias-cut stripe binding serves as a modern frame.

Project: Scrappy Triangles

Materials

- 1 yard tan print
- 1½ yards total assorted prints in red, yellow, green, blue, and orange
- ½ yard gold stripe (binding)
- 1¼ yards backing fabric
- 38×45" batting

Finished quilt: 32×38¾"

Yardages and cutting instructions are based on 42" of usable fabric width.

Measurements include ¼" seam allowances. Sew with right sides together unless otherwise stated.

Cut Fabrics

Cut pieces in the following order.

From tan print, cut:

- 119—3⅞" squares, cutting each diagonally once for 238 triangles total

From assorted prints, cut:

- 119—3⅞" squares, cutting each diagonally once for 238 triangles total

From gold stripe, cut:

- Enough 2½"-wide bias strips to total 170" in length for binding

Assemble Triangle-Squares

1. With right sides together, sew together a tan print triangle and an assorted print triangle along long edges (Diagram 1).
2. Press seam allowance away from the tan print to make a triangle-square. The triangle-square should be 2¾" square, including seam allowance (Diagram 2).
3. Repeat steps 1 and 2 to make 238 triangle-squares total.

Assemble Quilt Top

1. Referring to **Quilt Assembly Diagram**, lay out triangle-squares in 17 horizontal rows.
2. Sew together triangle-squares in each row. Press seams in one direction, alternating direction with each row.
3. Join rows to complete quilt top. Press seams in one direction.

Finish Quilt

1. Layer quilt top, batting, and backing; baste. Quilt as desired.
2. Bind with gold stripe bias binding strips.

Project: Scrappy Triangles

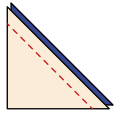


DIAGRAM 1

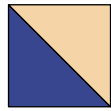
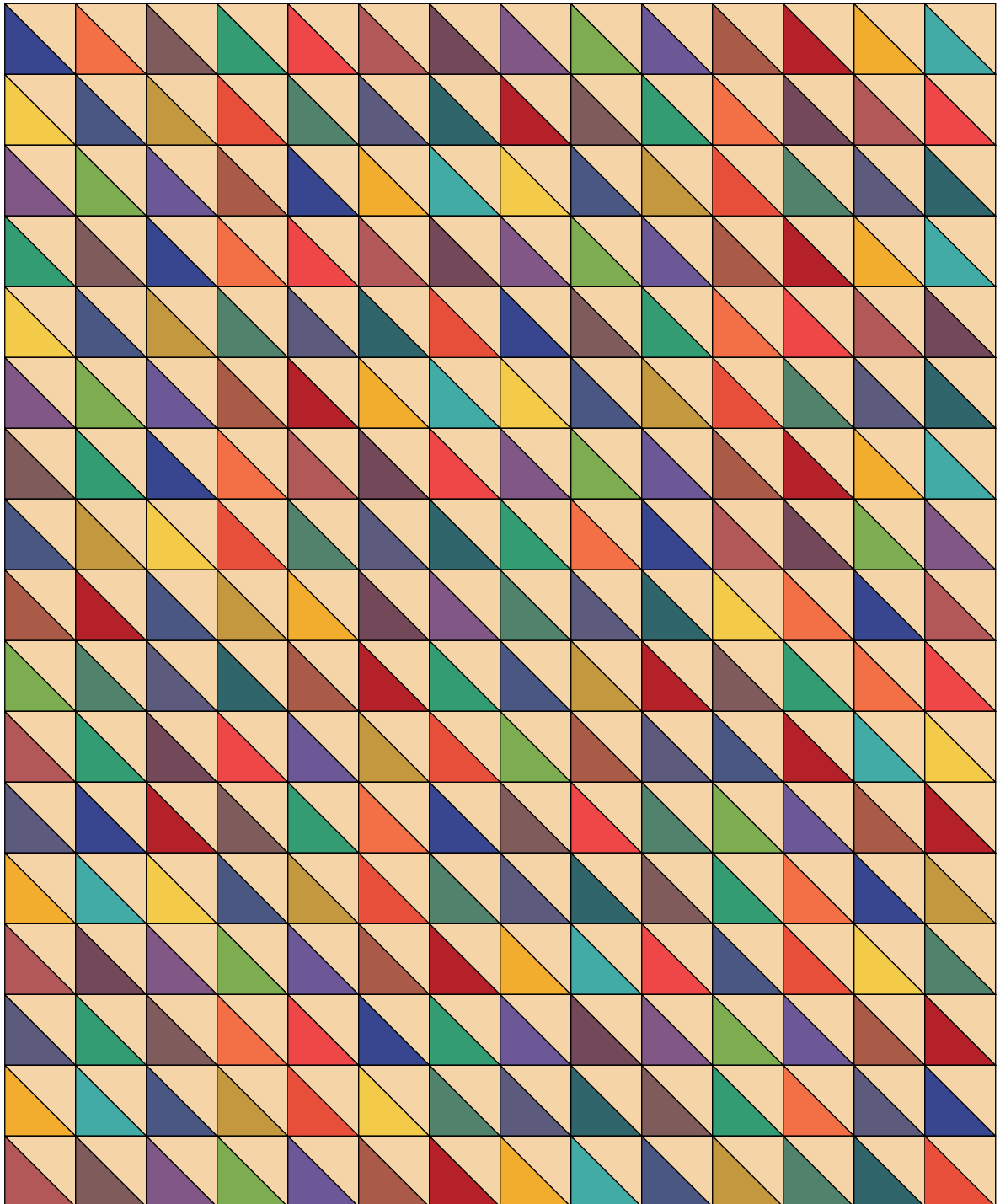


DIAGRAM 2



QUILT ASSEMBLY DIAGRAM