

## Project: Oh So Soothing

DESIGNER: LESLIE GLADMAN

Customize a spa bag by filling it with toiletries of your choosing to create a delightful token of affection.



## Project: Oh So Soothing

### Materials

- ½ yard yellow paisley (bag)
- ¾ yard blue print (lining)
- Scrap of batting
- 2⅓ yards narrow satin cording or ribbon
- 4—¾"-diameter buttons
- 1 package 1"-wide single-fold bias tape

**Finished bag:** 12×9×8"

**Yardages and cutting instructions** are based on 42" of usable fabric width.

**Measurements** include ¼" seam allowances. Sew with right sides together unless otherwise stated.

### Cut Fabrics

Cut pieces in the following order. Patterns are on pages 4–8. To make templates of the patterns, see *Make and Use Templates*, page 9.

#### From yellow paisley, cut:

- 4 each of patterns A and B
- 1 of Pattern C

#### From blue print, cut:

- 4 of Pattern A
- 1 of Pattern C

#### From batting scrap, cut:

- 1 of Pattern C

#### From single-fold bias tape, cut:

- 4—5"-long pieces

### Assemble Spa Bag

1. With wrong side inside, fold each yellow paisley B piece in half; press. Referring to marked dots on full-size pattern piece for placement, make an inverted box pleat along bottom raw edges of each folded B piece; stitch in place to make four pocket units.
2. Place a pocket unit atop right side of a yellow paisley A piece. Machine-baste pocket unit raw edges to A piece to make a spa bag unit (**Diagram 1**). Repeat to make four spa bag units total.
3. Press under ½" at each end of 5"-long pieces of single-fold bias tape.
4. Referring to **Diagram 2**, place a pressed bias tape strip atop right side of each spa bag unit as marked on full-size pattern. Topstitch close to long edges of bias strips, leaving ends open.
5. Sew together spa bag units in pairs, starting at marked dots and finishing at bottom edges (**Diagram 3**). In the same manner, join the pairs to make a pocket tube (**Diagram 4**). Press open seam allowances. Turn right side out.
6. Sew together blue print A pieces in pairs, starting at marked dots and finishing at bottom edges. Press seams open. In the same manner, join pairs to make a lining tube. Press seams open.
7. Place pocket tube inside lining tube with right sides together. Join top edges, stitching carefully to marked dots (**Diagram 5**). Trim seam allowance to ¼", clipping close to marked dots. Turn joined tubes right side out; press. Machine-baste around bottom raw edge of pocket/lining tube to secure layers together.
8. With wrong sides inside, layer batting C piece between yellow paisley C piece and blue print C piece; machine-baste to make bottom unit.
9. Matching arrows and seams of yellow paisley pieces, align pocket tube with bottom unit; sew together to make spa bag (**Diagram 6**). Turn bag right side out.
10. Stitch a button to each pocket intersection.
11. Cut cording in half and thread half through bias strips around bag. Knot ends together. Thread other cord half around bag in opposite direction and knot ends to complete spa bag.
12. Pull to draw up cords.

Project: Oh So Soothing

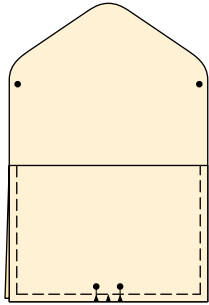


DIAGRAM 1

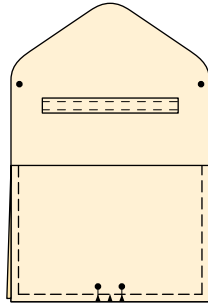


DIAGRAM 2

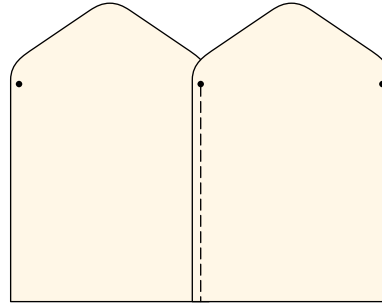


DIAGRAM 3

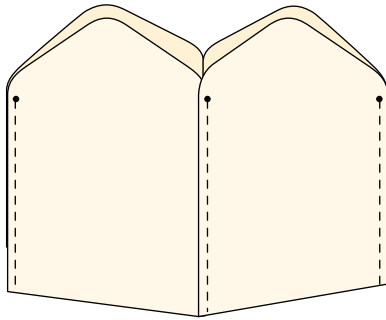


DIAGRAM 4

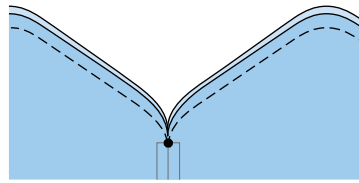


DIAGRAM 5

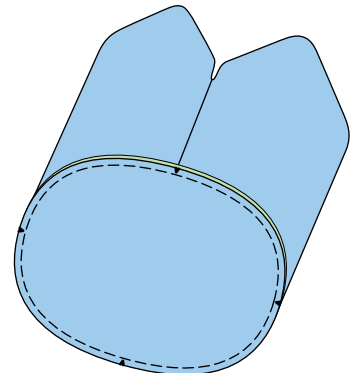


DIAGRAM 6

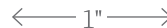
Project: Oh So Soothing

Oh So Soothing  
Pattern A  
Part 1 of 2



To make an entire pattern,  
cut out partial patterns on  
outside lines and tape together,  
overlapping shaded areas.

This box should  
measure 1".



**\* NOTE:**

When printing a  
downloadable pdf, set Page  
Scaling preference to NONE  
to print patterns at 100%.  
Do NOT "Shrink to Fit"  
or "Fit to Printable Area."

Project: Oh So Soothing

Oh So Soothing  
Pattern A  
Part 2 of 2

To make an entire pattern,  
cut out partial patterns on  
outside lines and tape together,  
overlapping shaded areas.

This box should  
measure 1".

← 1" →

**\* NOTE:**

When printing a  
downloadable pdf, set Page  
Scaling preference to NONE  
to print patterns at 100%.  
Do NOT "Shrink to Fit"  
or "Fit to Printable Area."

Project: Oh So Soothing

Oh So Soothing  
Pattern B  
Part 1 of 2

Fold

To make an entire pattern,  
cut out partial patterns on  
outside lines and tape together,  
overlapping shaded areas.

This box should  
measure 1".

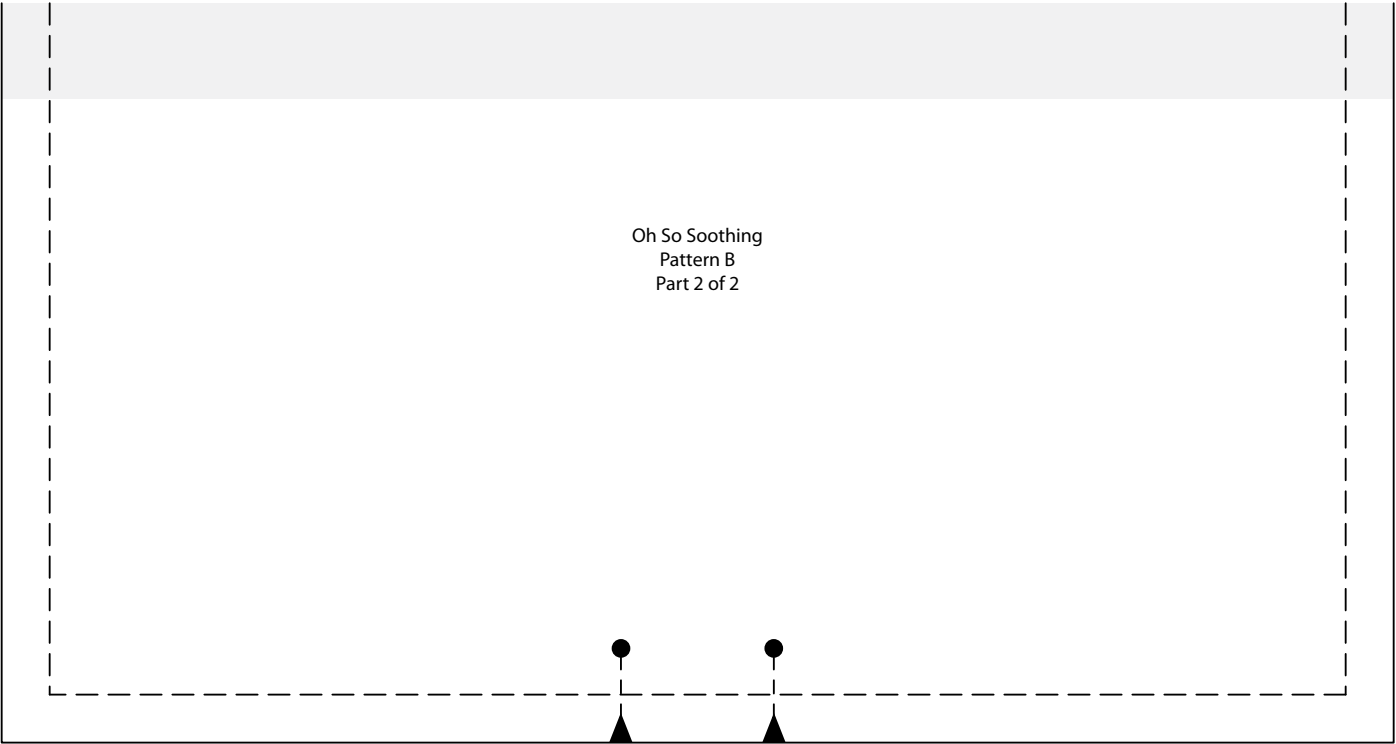
← 1" →

**\* NOTE:**

When printing a  
downloadable pdf, set Page  
Scaling preference to NONE  
to print patterns at 100%.  
Do NOT "Shrink to Fit"  
or "Fit to Printable Area."

Project: Oh So Soothing

Oh So Soothing  
Pattern B  
Part 2 of 2



To make an entire pattern,  
cut out partial patterns on  
outside lines and tape together,  
overlapping shaded areas.

This box should  
measure 1".  
← 1" →

**\* NOTE:**  
When printing a  
downloadable pdf, set Page  
Scaling preference to NONE  
to print patterns at 100%.  
Do NOT "Shrink to Fit"  
or "Fit to Printable Area."

Project: Oh So Soothing

Oh So Soothing  
Pattern C

This box should  
measure 1".

← 1" →

**\* NOTE:**

When printing a  
downloadable pdf, set Page  
Scaling preference to NONE  
to print patterns at 100%.  
Do NOT "Shrink to Fit"  
or "Fit to Printable Area."



## Make and Use Templates

### Make Templates

A template is a pattern made from extra-sturdy material so you can trace around it many times without wearing away the edges. Acrylic templates for many common shapes are available at quilt shops. Or you can make your own by duplicating printed patterns on template plastic.

To make permanent templates, purchase easy-to-cut template plastic, available at quilt shops and crafts supply stores. Lay the plastic over a printed pattern. Trace the pattern onto the plastic using a ruler and a permanent marker to ensure straight lines, accurate corners, and permanency.

For hand piecing and appliqué, make templates the exact size finished pieces will be (without seam allowances). For piecing, this means tracing the patterns' dashed lines.

For machine piecing, make templates that include seam allowances by tracing the patterns' solid and dashed lines onto the template plastic.

For easy reference, mark each template with its letter designation, grain line (if noted on the pattern), and block name. Cut out the traced shapes on their outside lines. Verify each template's shape and size by placing it over its printed pattern. Templates must be accurate; errors, however small, will compound many times as you assemble a quilt. To check templates' accuracy, make a test block before cutting the fabric pieces for an entire quilt.

### Use Templates

To mark on fabric, use a pencil, white dressmaker's pencil, chalk, or a special fabric marker that makes a thin, accurate line. Do not use a ballpoint or ink pen; it may bleed if washed. Test all marking tools on a fabric scrap before using them.

To make pieces for hand piecing or appliqué, place a template facedown on the wrong side of the fabric and trace. Then reposition the template at least  $\frac{1}{2}$ " away from the previous tracing (**Diagram 1**), trace again, and repeat. The lines you trace on the fabric are sewing lines. Mark cutting lines  $\frac{1}{4}$ " away from the sewing lines, or estimate the distance by eye when cutting out the pieces with scissors. For hand piecing, add a  $\frac{1}{4}$ " seam allowance; for hand appliqué, add a  $\frac{3}{16}$ " seam allowance.

Because templates used to make pieces for machine piecing have seam allowances included, you can use common tracing lines for efficient cutting. Place a template facedown on the wrong side of the fabric and trace. Then reposition the template without a space between it and the previous tracing (**Diagram 2**); trace again and repeat. Using a rotary cutter and ruler, cut pieces out, cutting precisely on the drawn lines.

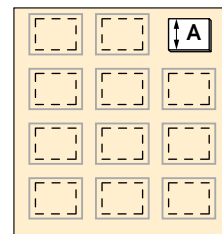


DIAGRAM 1

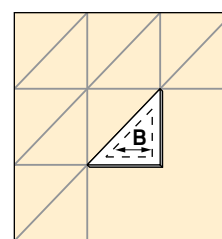


DIAGRAM 2