

Project: Chinese Fan

Materials

- Yellow print, red print, turquoise print, and cream print scraps

Finish block: 9" square

Cut the Fabrics

The patterns are on page 2-4. To make templates of patterns, see "Make and Use Templates" on page 5.

From yellow print, cut:

- 1 each of patterns A and A reversed
- 3 of Pattern C

From red print, cut:

- 4 of Pattern B

From turquoise print, cut:

- 1 of Pattern D

From cream print, cut:

- 1 of Pattern E

4. Add the arc unit to the cream print E piece (Diagram 4) to make a block (Block Assembly Diagram).

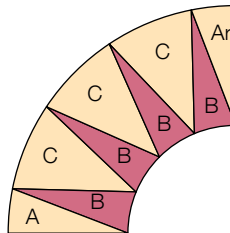


DIAGRAM 1

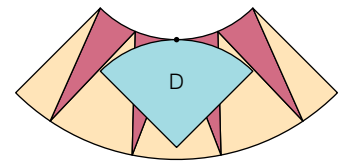


DIAGRAM 2

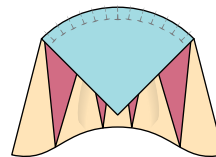


DIAGRAM 3

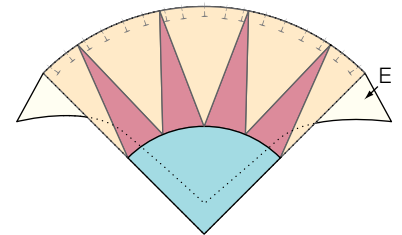
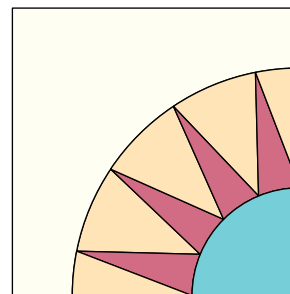


DIAGRAM 4

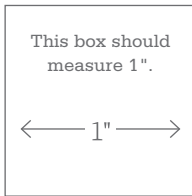
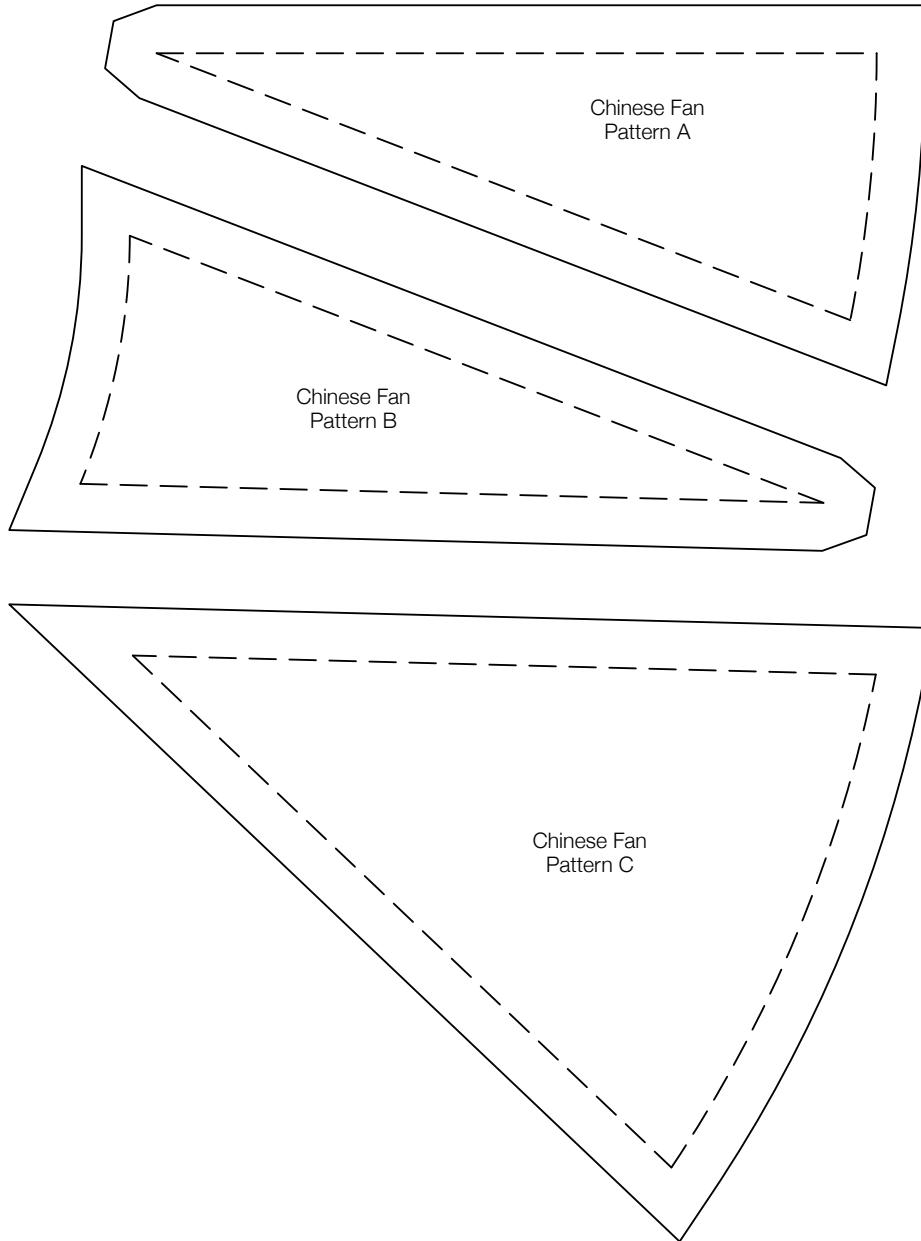
Assemble the Block

1. Sew together one yellow print A piece, one yellow print A reversed piece, one red print B piece, and three yellow print C pieces to make an arc unit (Diagram 1).
2. When pinning curved seams, use slender pins and pick up only a few threads at each position. With a turquoise D piece on top and right sides together, match the center mark on the curved edge of the D piece with the center mark on one curved edge of the arc unit (Diagram 2). After pinning the center of the seam, pin each end; then pin generously in between (Diagram 3).
3. Sew together the pieces, removing each pin just before the needle reaches it. Press the seam allowances toward the turquoise piece.



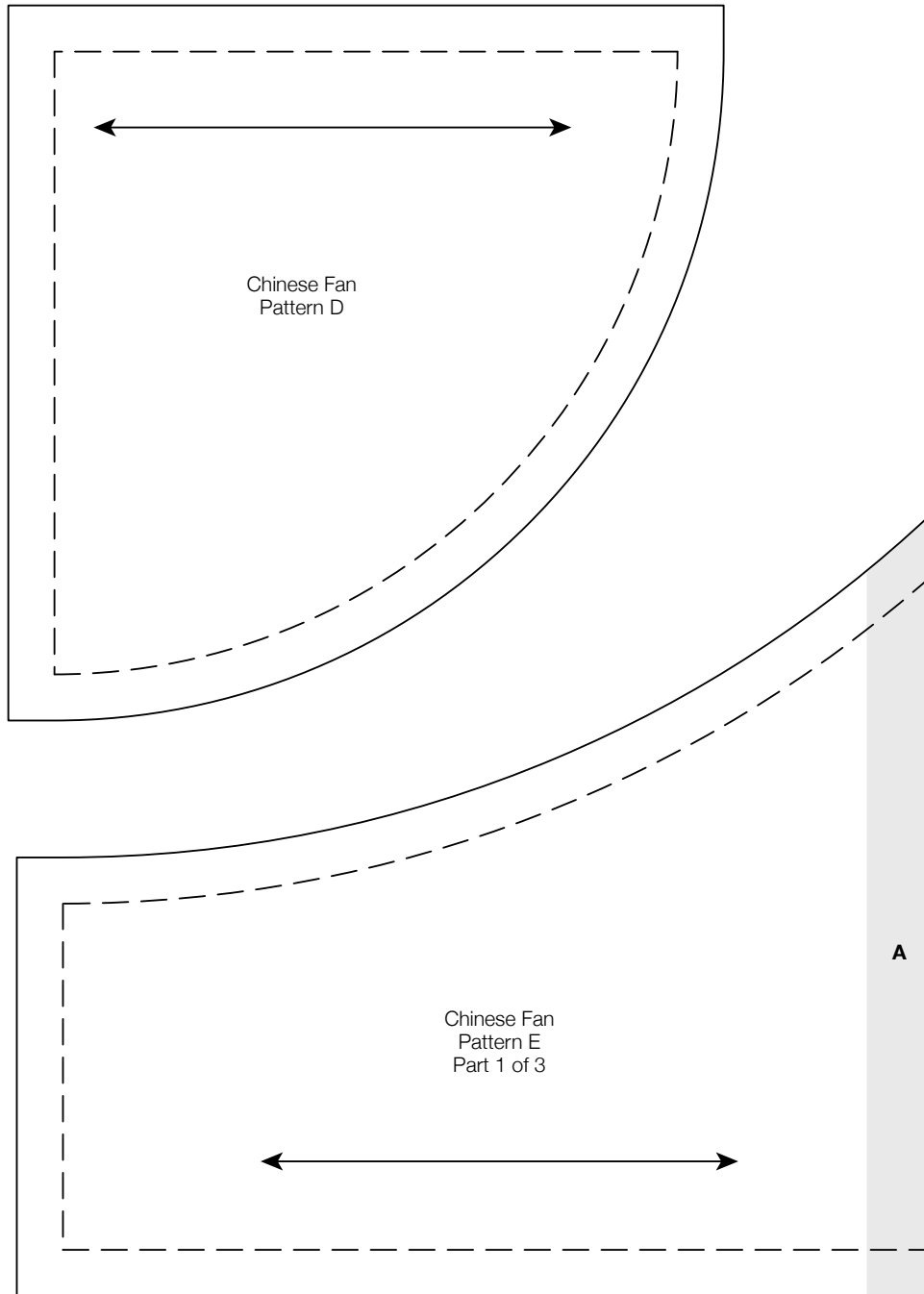
BLOCK ASSEMBLY DIAGRAM

Project: Chinese Fan



*** NOTE:**
When printing a downloadable pdf, set Page Scaling preference to NONE to print patterns at 100%. Do NOT "Shrink to Fit" or "Fit to Printable Area."

Project: Chinese Fan



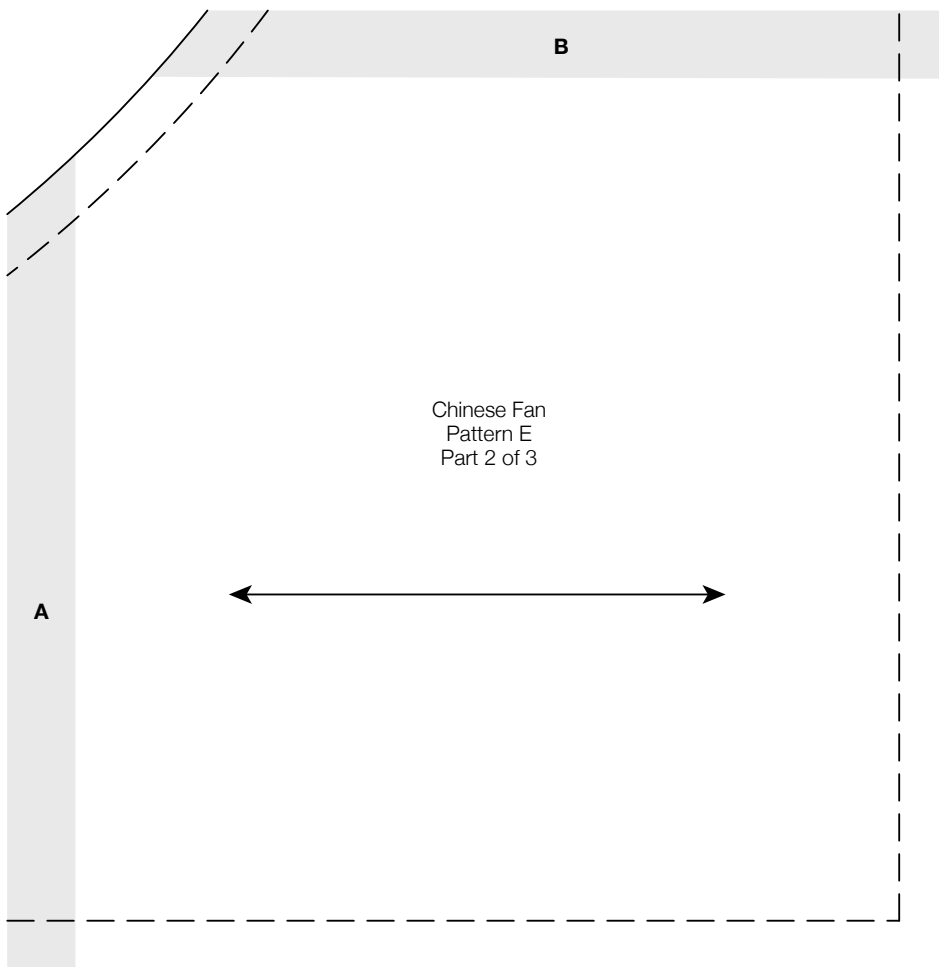
To make an entire pattern, cut out partial patterns on outside lines and tape together, overlapping shaded areas.

This box should measure 1".

← 1" →

*** NOTE:** When printing a downloadable pdf, set Page Scaling preference to NONE to print patterns at 100%. Do NOT "Shrink to Fit" or "Fit to Printable Area."

Project: Chinese Fan

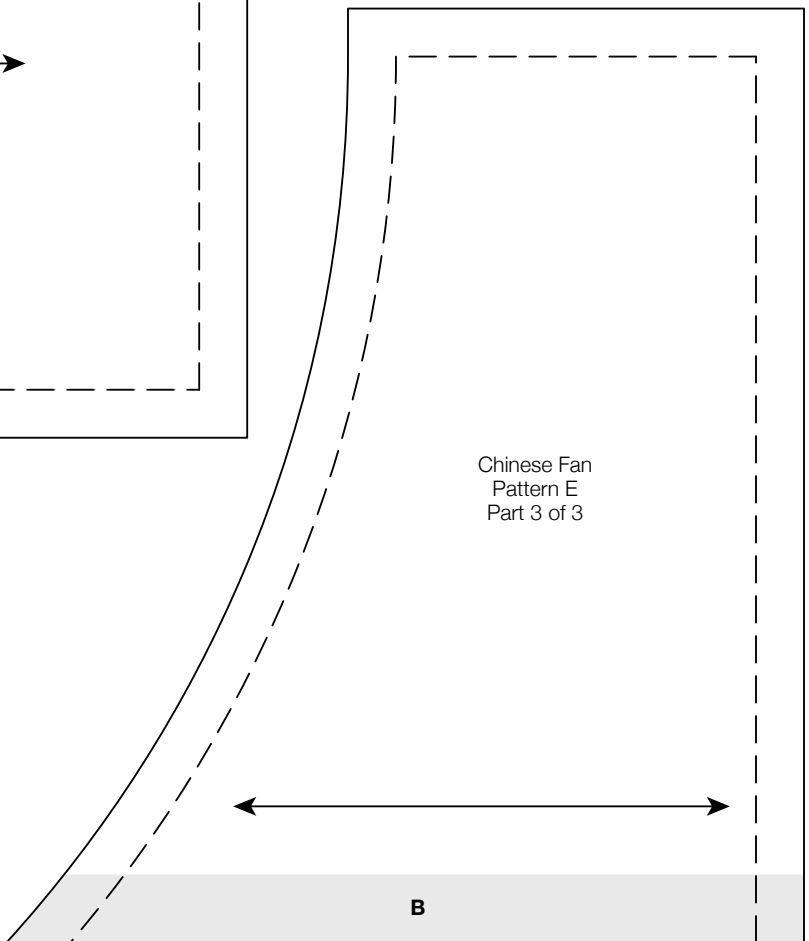


To make an entire pattern, cut out partial patterns on outside lines and tape together, overlapping shaded areas.

This box should measure 1".

← 1" →

*** NOTE:** When printing a downloadable pdf, set Page Scaling preference to NONE to print patterns at 100%. Do NOT "Shrink to Fit" or "Fit to Printable Area."



Make and Use Templates

Make Templates

A template is a pattern made from extra-sturdy material so you can trace around it many times without wearing away the edges. Acrylic templates for many common shapes are available at quilt shops. Or you can make your own by duplicating printed patterns on template plastic.

To make permanent templates, purchase easy-to-cut template plastic, available at quilt shops and crafts supply stores. Lay the plastic over a printed pattern. Trace the pattern onto the plastic using a ruler and a permanent marker to ensure straight lines, accurate corners, and permanency.

For hand piecing and appliqué, make templates the exact size finished pieces will be (without seam allowances). For piecing, this means tracing the patterns' dashed lines.

For machine piecing, make templates that include seam allowances by tracing the patterns' solid and dashed lines onto the template plastic.

For easy reference, mark each template with its letter designation, grain line (if noted on the pattern), and block name. Cut out the traced shapes on their outside lines. Verify each template's shape and size by placing it over its printed pattern. Templates must be accurate; errors, however small, will compound many times as you assemble a quilt. To check templates' accuracy, make a test block before cutting the fabric pieces for an entire quilt.

Use Templates

To mark on fabric, use a pencil, white dressmaker's pencil, chalk, or a special fabric marker that makes a thin, accurate line. Do not use a ballpoint or ink pen; it may bleed if washed. Test all marking tools on a fabric scrap before using them.

To make pieces for hand piecing or appliqué, place a template facedown on the wrong side of the fabric and trace. Then reposition the template at least $\frac{1}{2}$ " away from the previous tracing (**Diagram 1**), trace again, and repeat. The lines you trace on the fabric are sewing lines. Mark cutting lines $\frac{1}{4}$ " away from the sewing lines, or estimate the distance by eye when cutting out the pieces with scissors. For hand piecing, add a $\frac{1}{4}$ " seam allowance; for hand appliqué, add a $\frac{3}{16}$ " seam allowance.

Because templates used to make pieces for machine piecing have seam allowances included, you can use common tracing lines for efficient cutting. Place a template facedown on the wrong side of the fabric and trace. Then reposition the template without a space between it and the previous tracing (**Diagram 2**); trace again and repeat. Using a rotary cutter and ruler, cut pieces out, cutting precisely on the drawn lines.

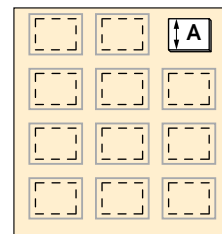


DIAGRAM 1

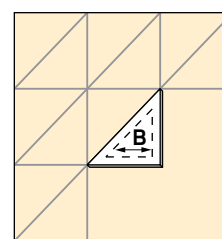


DIAGRAM 2