

Project: Double the Fun

INSPIRED BY RING AROUND FROM DESIGNER BRIGITTE HEITLAND OF ZEN CHIC (BRIGITTEHEITLAND.DE)
QUILT TESTER: LAURA BOEHNKE



FABRICS are from the Urban Oasis collection by Kitty Yoshida for Benartex (benartex.com).



Double your use of circles in a wall hanging that showcases fussy-cut circular motifs stacked on rings in a variety of fun prints.

Project: Double the Fun

Materials

- 17—7" squares of assorted prints (A, B, E, F, and G appliqués)
- 3—12" squares of assorted prints (C and D appliqués)
- ¾ yard purple print (appliqué foundation)
- ⅜ yard purple stripe (inner border)
- ¼ yard purple swirl (outer border)
- ½ yard paisley print (binding)
- 2½ yards backing fabric
- 43×58" batting
- Lightweight fusible web
- Clear monofilament thread (or thread to match appliqués)

Finished quilt: 34½×50"

Yardages and cutting instructions are based on 42" of usable fabric width.

Measurements include ¼" seam allowances. Sew with right sides together unless otherwise stated.

Cut Fabrics

Cut pieces in the following order.

Patterns are on pages 5-9.

Patterns A-D are quarter rings. To make a full ring pattern, fold a sheet of paper in fourths and trace a quarter ring pattern on folded paper. Cut out on traced lines and unfold.

To use fusible web for appliquéing, complete the following steps.

1. Lay fusible web, paper side up, over patterns. Use a pencil to trace each pattern the number of times indicated in cutting instructions, leaving ½" between tracings. Cut out each fusible-web shape roughly ¼" outside traced lines.

2. Following manufacturer's instructions, press fusible-web shapes onto wrong sides of designated fabrics; let cool. Cut out fabric shapes on drawn lines. Peel off paper backings.

From assorted print 7" squares, cut:

- 3 each of patterns A and E
- 4 each of patterns B and F
- 2 of Pattern G
- 1 of Pattern H

From assorted print 12" squares, cut:

- 2 of Pattern C
- 1 of Pattern D

From purple print, cut:

- 1—24½×40" rectangle

From purple stripe, cut:

- 2—1½×40" inner border strips
- 2—1½×26½" inner border strips

From purple swirl, cut:

- 2—4½×42" outer border strips
- 2—4½×34½" outer border strips

From paisley print, cut:

- 5—2½×42" binding strips

Assemble and Appliqué Quilt Top

1. Referring to **Quilt Assembly Diagram**, arrange assorted print rings and circles on purple print 24½×40" rectangle.
2. Fuse rings and circles in place following manufacturer's instructions. Using a satin stitch and clear monofilament thread or thread colors that match the appliqués, stitch around each appliqué to make quilt center.
3. Sew purple stripe 1½×40" inner border strips to long edges of quilt center. Add purple stripe 1½×26½" inner border strips to remaining edges. Press all seams toward border.

4. Sew purple swirl 4½×42" outer border strips to long edges of quilt center. Add purple swirl 4½×34½" outer border strips to remaining edges to complete quilt top. Press all seams toward outer border.

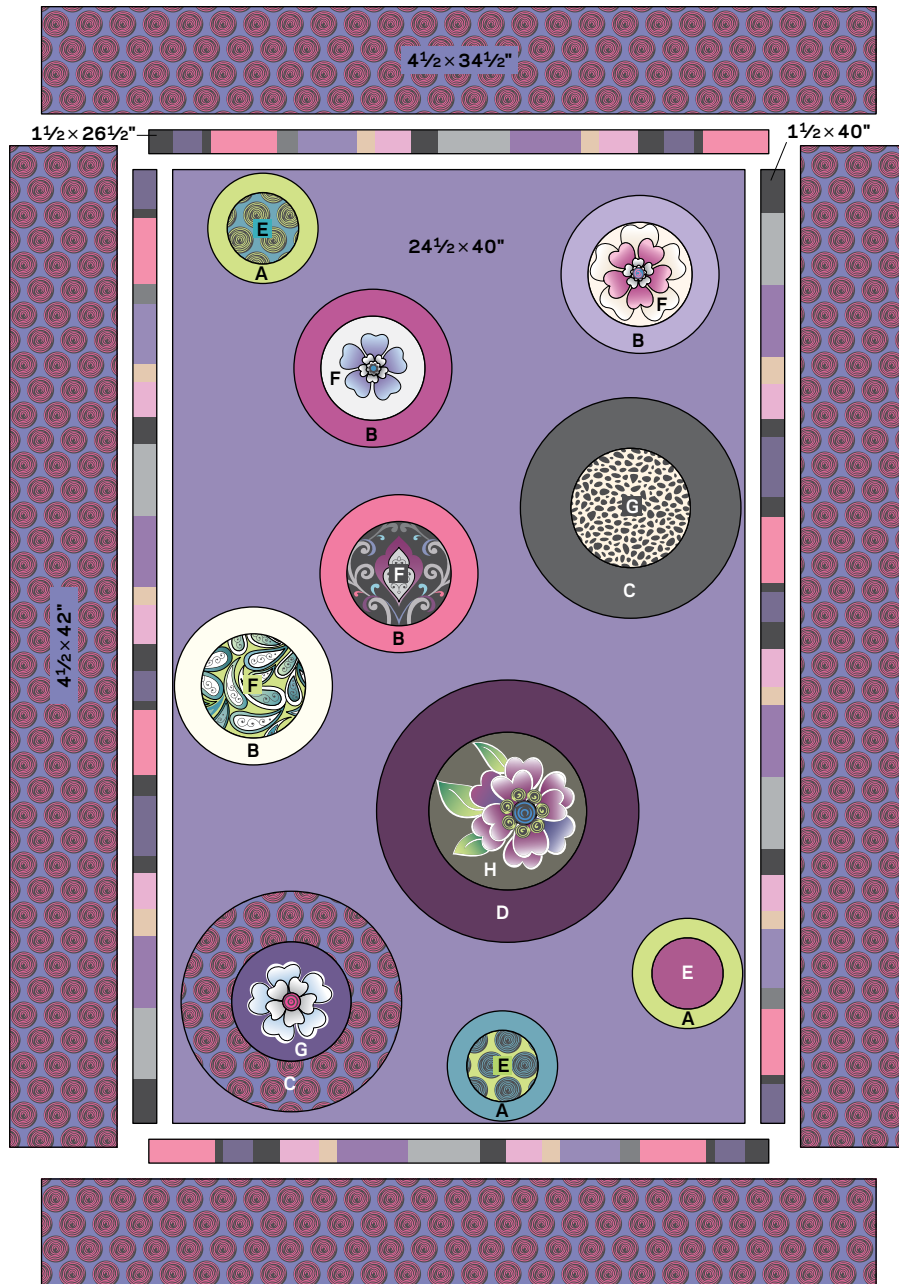
Finish Quilt

1. Layer quilt top, batting, and backing; baste.
2. Quilt as desired. Handi Quilter educator Vicki Hoth machine-quilted curved-line motifs, including feathers, ribbon candy, arcs, and lines that follow the fabric motifs inside each circle appliqué (**Quilting Diagram**).

TIP: To stitch continuous-line circles as Vicki did in the outer border, use a figure-eight pattern. Stitch around circles diagonally in one direction, then reverse directions, stitching the opposite way to complete the circles (**Border Quilting Diagram**).

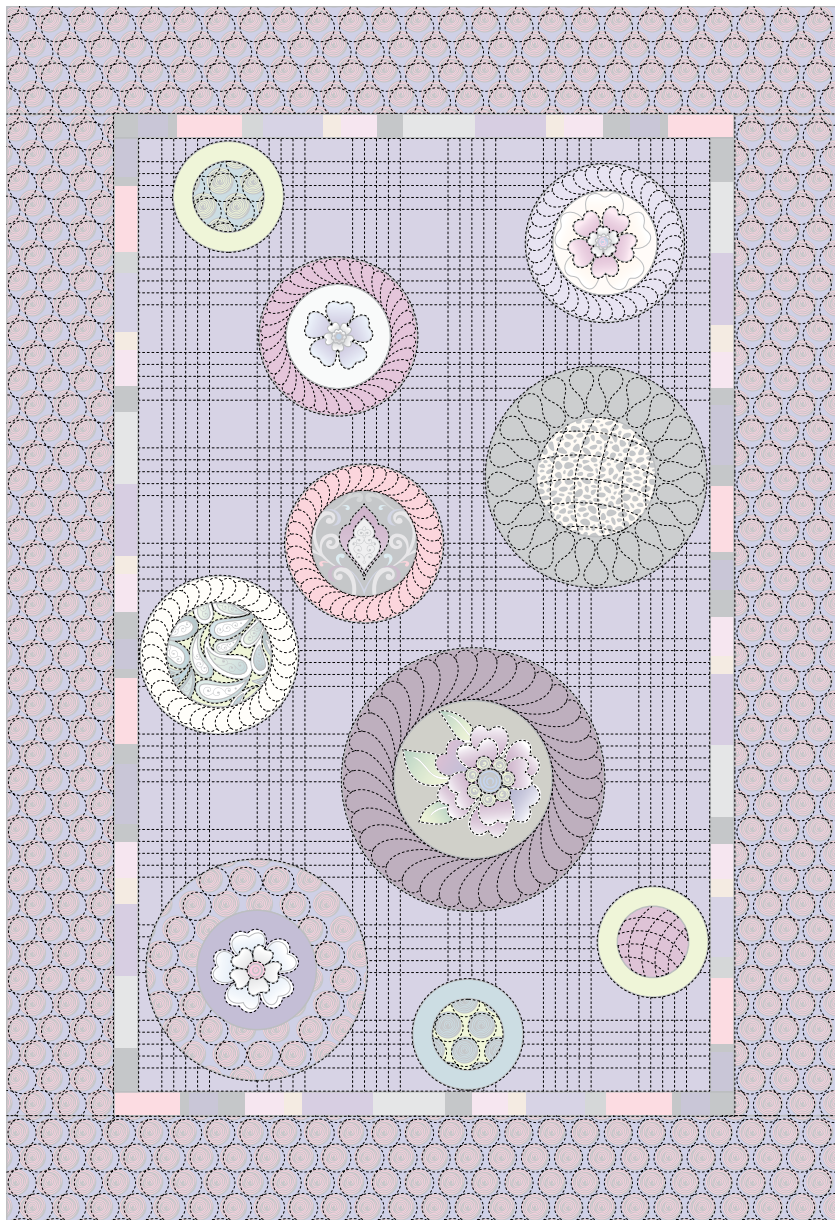
3. Bind with paisley print binding strips.

Project: Double the Fun

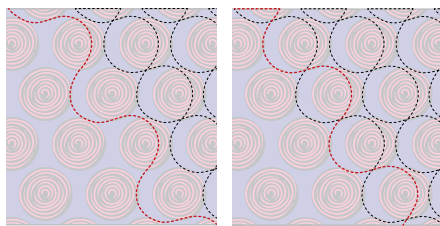


QUILT ASSEMBLY DIAGRAM

Project: Double the Fun

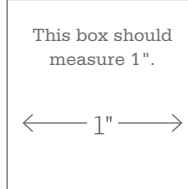
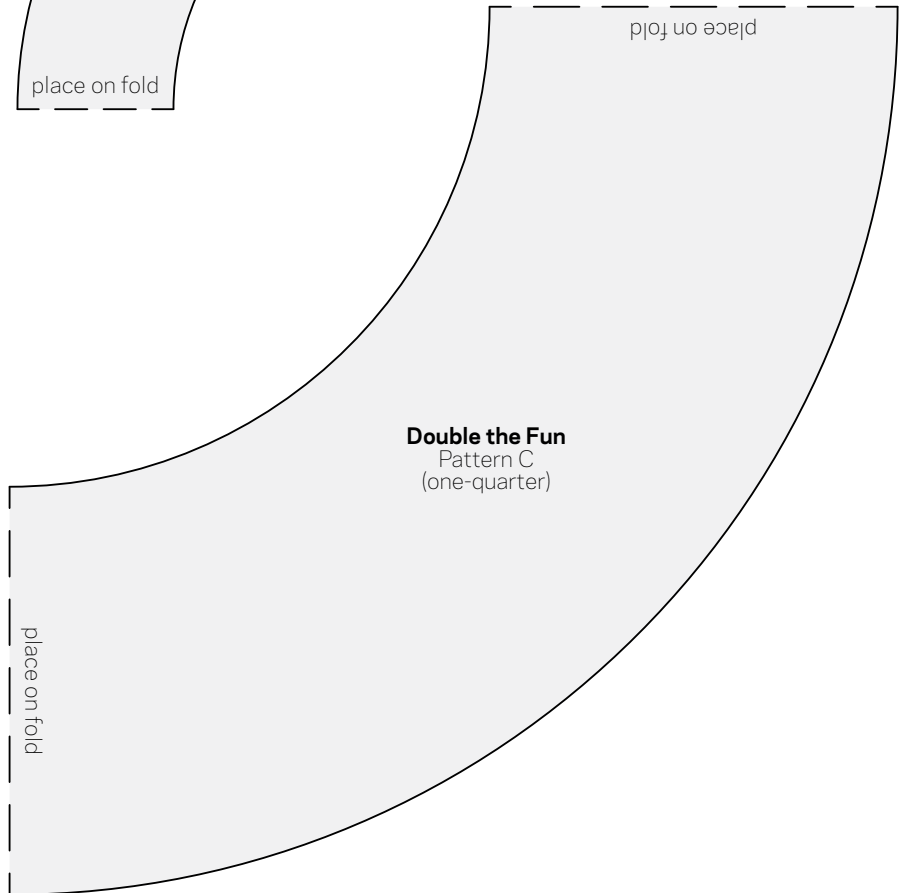
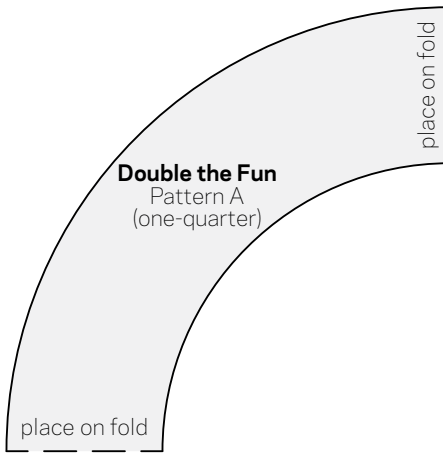
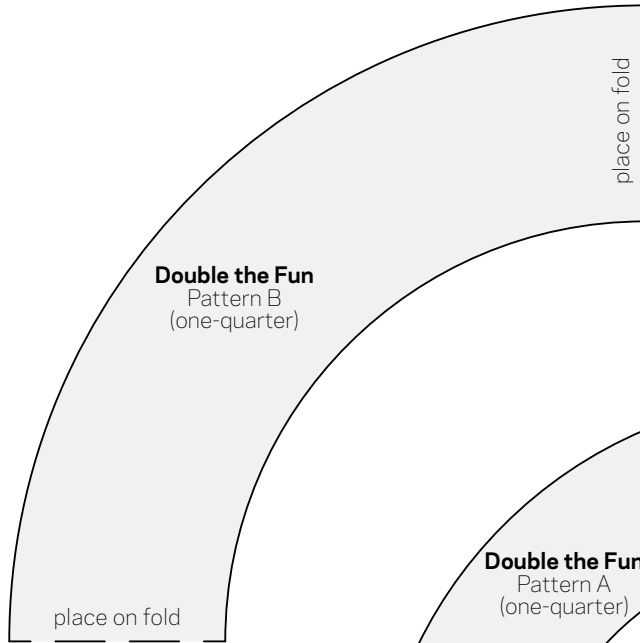


QUILTING DIAGRAM



BORDER QUILTING DIAGRAM

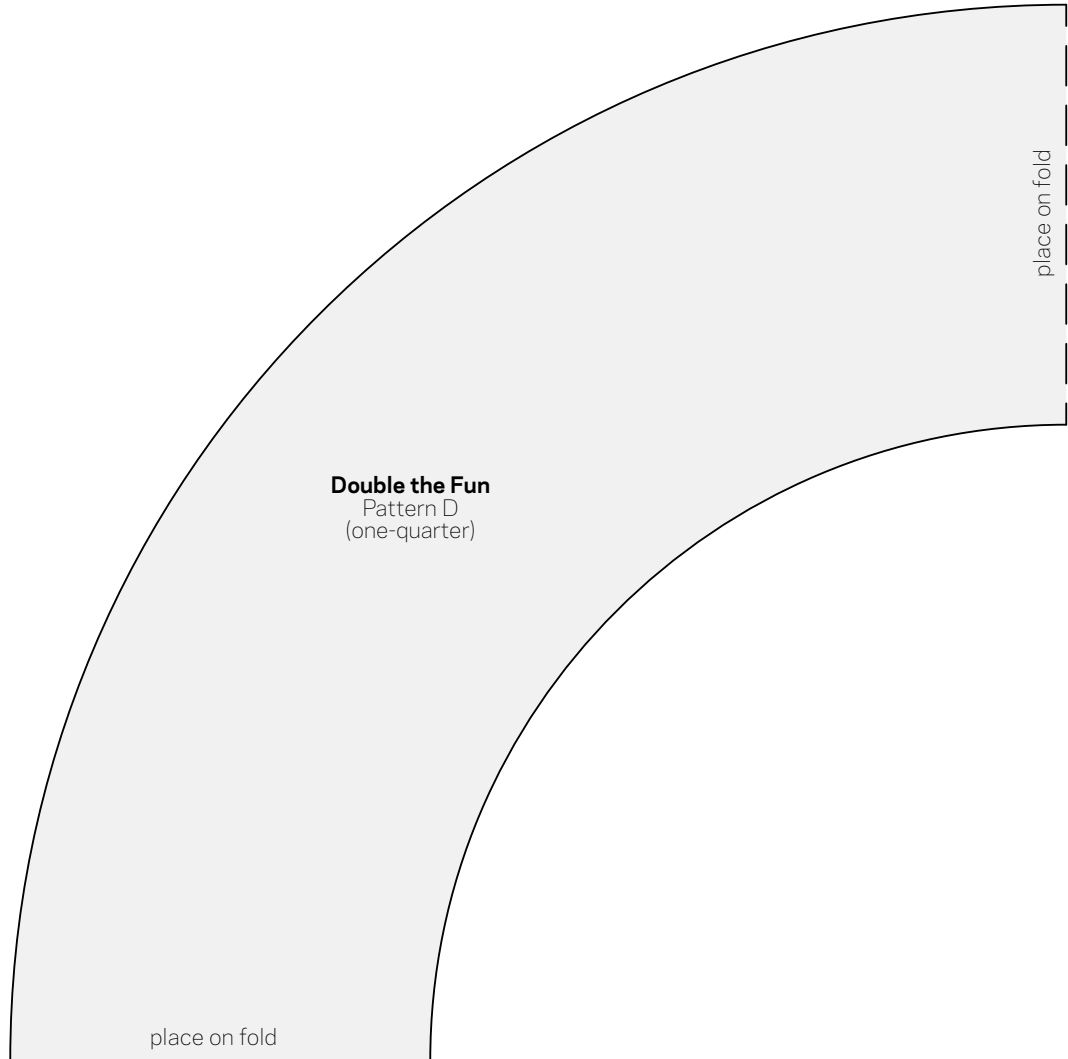
Project: Double the Fun



* NOTE:

When printing a downloadable pdf, set Page Scaling preference to NONE to print patterns at 100%. Do NOT "Shrink to Fit" or "Fit to Printable Area."

Project: Double the Fun



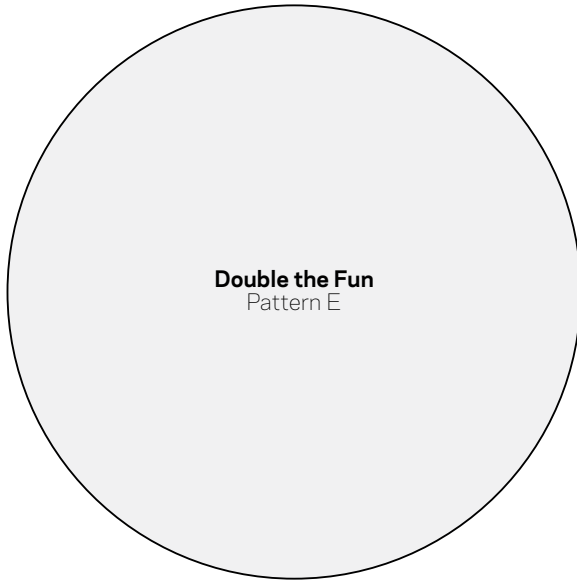
This box should measure 1".

← 1" →

*** NOTE:**

When printing a downloadable pdf, set Page Scaling preference to NONE to print patterns at 100%. Do NOT "Shrink to Fit" or "Fit to Printable Area."

Project: Double the Fun



This box should measure 1".

← 1" →

* NOTE:

When printing a downloadable pdf, set Page Scaling preference to NONE to print patterns at 100%. Do NOT "Shrink to Fit" or "Fit to Printable Area."

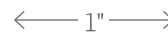


Project: Double the Fun



Double the Fun
Pattern G

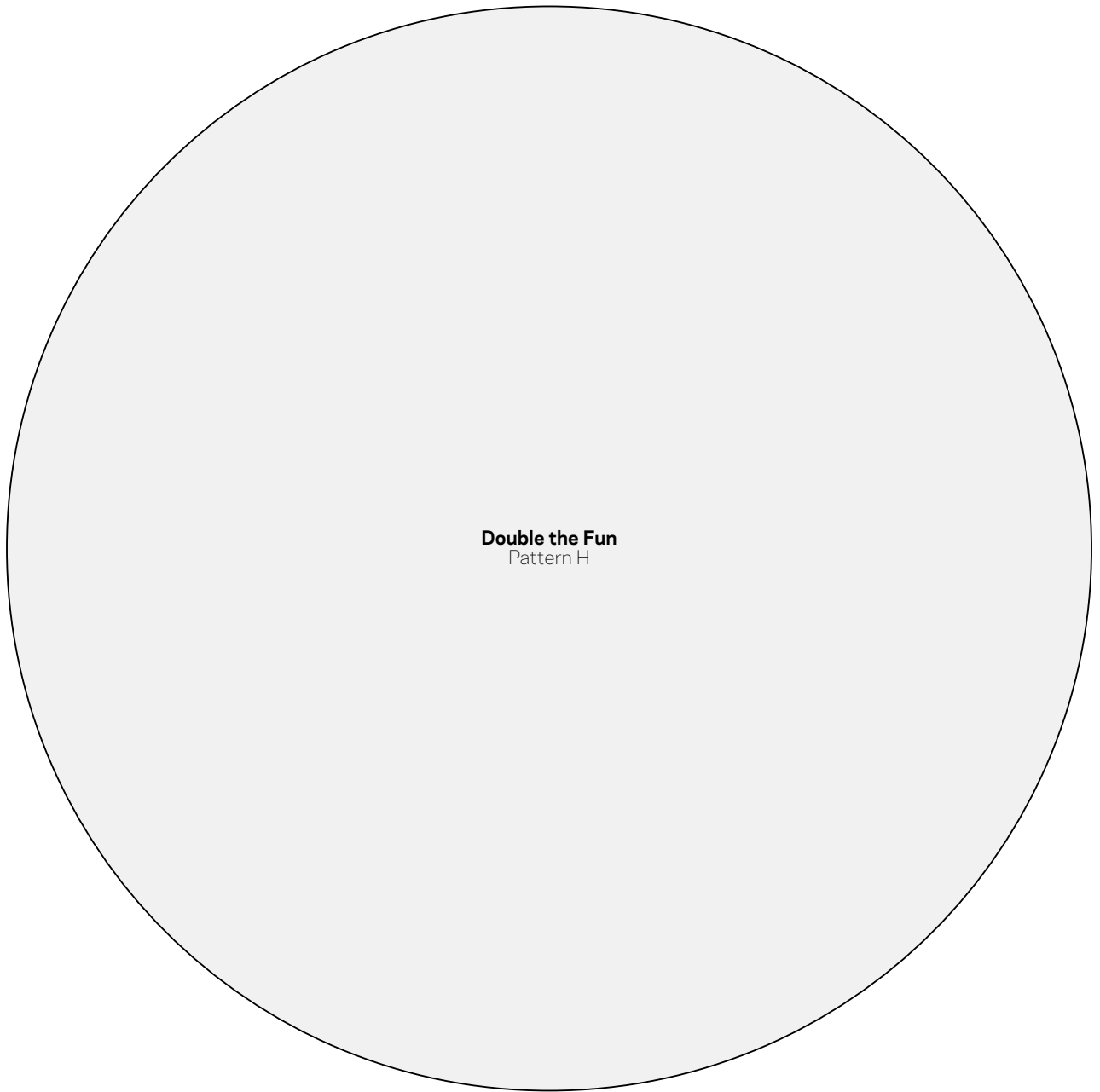
This box should
measure 1".



*** NOTE:**

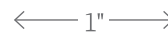
When printing a
downloadable pdf, set Page
Scaling preference to NONE
to print patterns at 100%.
Do NOT "Shrink to Fit"
or "Fit to Printable Area."

Project: Double the Fun



Double the Fun
Pattern H

This box should
measure 1".



*** NOTE:**

When printing a
downloadable pdf, set Page
Scaling preference to NONE
to print patterns at 100%.
Do NOT "Shrink to Fit"
or "Fit to Printable Area."

Make and Use Templates

Make Templates

A template is a pattern made from extra-sturdy material so you can trace around it many times without wearing away the edges. Acrylic templates for many common shapes are available at quilt shops. Or you can make your own by duplicating printed patterns on template plastic.

To make permanent templates, purchase easy-to-cut template plastic, available at quilt shops and crafts supply stores. Lay the plastic over a printed pattern. Trace the pattern onto the plastic using a ruler and a permanent marker to ensure straight lines, accurate corners, and permanency.

For hand piecing and appliqué, make templates the exact size finished pieces will be (without seam allowances). For piecing, this means tracing the patterns' dashed lines.

For machine piecing, make templates that include seam allowances by tracing the patterns' solid and dashed lines onto the template plastic.

For easy reference, mark each template with its letter designation, grain line (if noted on the pattern), and block name. Cut out the traced shapes on their outside lines. Verify each template's shape and size by placing it over its printed pattern. Templates must be accurate; errors, however small, will compound many times as you assemble a quilt. To check templates' accuracy, make a test block before cutting the fabric pieces for an entire quilt.

Use Templates

To mark on fabric, use a pencil, white dressmaker's pencil, chalk, or a special fabric marker that makes a thin, accurate line. Do not use a ballpoint or ink pen; it may bleed if washed. Test all marking tools on a fabric scrap before using them.

To make pieces for hand piecing or appliqué, place a template facedown on the wrong side of the fabric and trace. Then reposition the template at least $\frac{1}{2}$ " away from the previous tracing (**Diagram 1**), trace again, and repeat. The lines you trace on the fabric are sewing lines. Mark cutting lines $\frac{1}{4}$ " away from the sewing lines, or estimate the distance by eye when cutting out the pieces with scissors. For hand piecing, add a $\frac{1}{4}$ " seam allowance; for hand appliqué, add a $\frac{3}{16}$ " seam allowance.

Because templates used to make pieces for machine piecing have seam allowances included, you can use common tracing lines for efficient cutting. Place a template facedown on the wrong side of the fabric and trace. Then reposition the template without a space between it and the previous tracing (**Diagram 2**); trace again and repeat. Using a rotary cutter and ruler, cut pieces out, cutting precisely on the drawn lines.

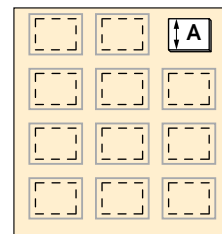


DIAGRAM 1

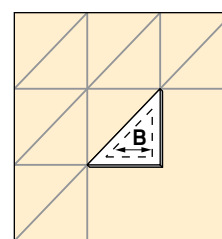


DIAGRAM 2