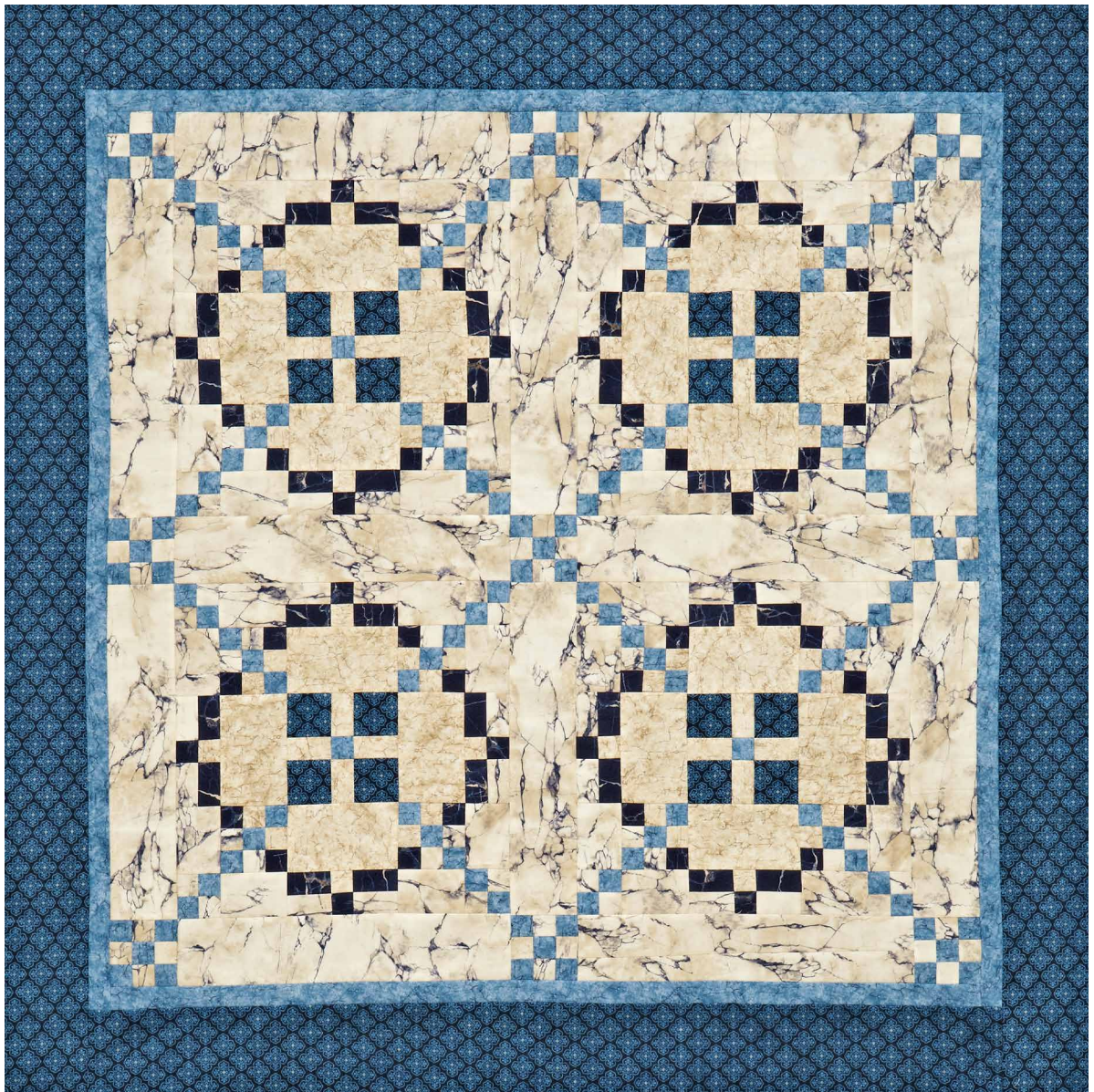
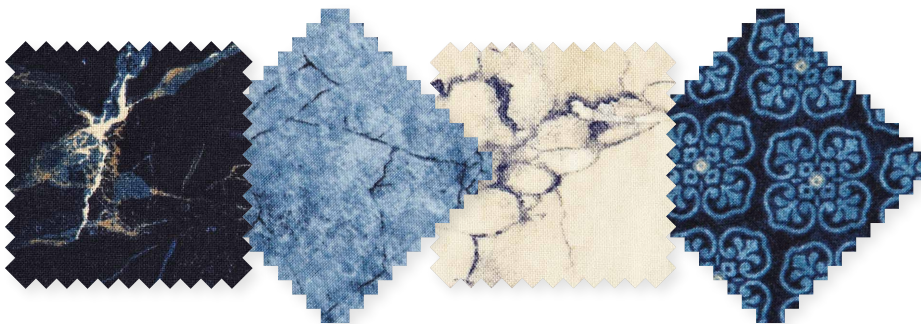


## Project: Marbled Elegance

INSPIRED BY *TONE IT DOWN* FROM DESIGNER LISSA ALEXANDER ([MODALISSA.BLOGSPOT.COM](http://MODALISSA.BLOGSPOT.COM))  
QUILT TESTER: LAURA BOEHNKE



FABRICS are from the Stonehenge Aphrodite collection by Deborah Edwards for Northcott ([northcott.net](http://northcott.net)).



Skinny chains of light, medium, and dark blue squares run through a marbled, creamy field, mimicking the blue veins in the background print.



## Project: Marbled Elegance

### Materials

- ½ yard light blue print (blocks, sashing, inner border)
- ⅞ yards blue floral (outer border)
- 1⅓ yards cream marble print (blocks, sashing)
- ⅓ yard dark blue print (blocks)
- ¼ yard medium blue print (blocks)
- ½ yard cream tone-on-tone (blocks)
- ½ yards binding print
- ¾ yards backing fabric
- 58" square batting

Finished quilt: 49½" square

Finished block: 15" square

Yardages and cutting instructions are based on 42" of usable fabric width.

Measurements include ¼" seam allowances. Sew with right sides together unless otherwise stated.

### Cut Fabrics

Cut pieces in the following order.

Refer to Cut and Assemble Blocks and Assemble Quilt Center to cut remaining fabrics.

#### From light blue print, cut:

- 2—1½×41½" inner border strips
- 2—1½×39½" inner border strips

#### From blue floral, cut:

- 5—4½×42" strips for outer border

#### From binding print, cut:

- 6—2½×42" strips

### Cut and Assemble Blocks

The following instructions use strip piecing to make one block. Repeat cutting and assembly steps to make four blocks total.

#### From light blue print, cut:

- 3—1½×10" strips
- 5—1½" squares

#### From cream marble print, cut:

- 8—2½×3½" rectangles
- 8—1½×10" strips

#### From dark blue print, cut:

- 5—1½×10" strips

#### From medium blue print, cut:

- 4—2½" squares

#### From cream tone-on-tone, cut:

- 4—3½×5½" rectangles
- 4—1½×2½" rectangles

1. Sew together a light blue print 1½×10" strip and a cream marble print 1½×10" strip to make Strip Set A (Diagram 1). Press seam away from cream marble print strip. Repeat to make three A strip sets total. Cut strip sets into sixteen 1½"-wide A segments.
2. Sew together a dark blue print 1½×10" strip and a cream marble print 1½×10" strip to make Strip Set B (Diagram 2). Press seam away from cream print. Repeat to make five B strip sets total. Cut strip sets into eight 2½"-wide B segments and twelve 1½"-wide C segments.
3. Sew together two A segments to make a Four-Patch unit (Diagram 3). Press seam in one direction. The unit should be 2½" square including seam allowances. Repeat to make eight Four-Patch units total.
4. Referring to Diagram 4, join two B segments and one C segment to make a side unit. Press seams in one direction. The unit should be 5½×2½" including seam allowances. Repeat to make four side units total.
5. Referring to Diagram 5, lay out a Four-Patch unit, two C segments, and a light blue print 1½" square in two rows. Sew together pieces in each row. Press seams in opposite directions. Join rows to make a Nine-Patch unit. Press seam in one direction. The unit should be 3½" square including seam allowances. Repeat to make four Nine-Patch units total.
6. Referring to Diagram 6, lay out medium blue print 2½" squares, four cream tone-on-tone 1½×2½" rectangles, and remaining light blue print 1½" square in three horizontal rows. Sew together pieces in each row. Press seams away from cream tone-on-tone pieces. Join rows to make center unit. Press seams away from middle row. The unit should be 5½" square including seam allowances.
7. Referring to Diagram 7 for orientation of units, lay out remaining Four-Patch units, cream marble print 2½×3½" rectangles, side units, Nine-Patch units, cream tone-on-tone 3½×5½" rectangles, and center unit in five horizontal rows. Sew together pieces in each row. Press seams toward cream marble and cream tone-on-tone rectangles. Join rows to make a Burgoyne Surrounded block; press seams in one direction. The block should be 15½" square including seam allowances.

### Assemble Quilt Center

From remaining light blue print, cut:

- 45—1½" squares

## Project: Marbled Elegance

### From remaining cream marble print, cut:

- 12— $3\frac{1}{2} \times 15\frac{1}{2}$ " sashing rectangles
- 36— $1\frac{1}{2}$ " squares

**1.** Referring to **Diagram 8**, lay out five light blue print  $1\frac{1}{2}$ " squares and four cream marble print  $1\frac{1}{2}$ " squares in three rows. Sew together squares in each row. Press seams away from cream marble print squares. Join rows to make a Nine-Patch sashing unit; press seams in one direction. The unit should be  $3\frac{1}{2}$ " square including seam allowances. Repeat to make nine Nine-Patch sashing units total.

**2.** Referring to **Quilt Assembly Diagram**, lay out Nine-Patch sashing units, cream marble print  $3\frac{1}{2} \times 15\frac{1}{2}$ " sashing rectangles, and blocks in five horizontal rows. Sew together pieces in each row. Press seams toward sashing rectangles. Join rows to make quilt center; press seams toward sashing rows. Quilt center should be  $39\frac{1}{2}$ " square including seam allowances.

**3.** Sew short blue floral outer border strips to opposite edges of quilt center. Add long blue floral outer border strips to remaining edges to complete quilt top. Press all seams toward outer border.

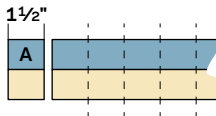
### Finish Quilt

- 1.** Layer quilt top, batting, and backing; baste. Quilt as desired.
- 2.** Bind with binding strips.

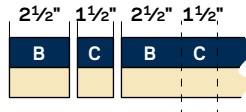
### Assemble and Add Borders

- 1.** Sew light blue print  $1\frac{1}{2} \times 39\frac{1}{2}$ " inner border strips to opposite edges of quilt center. Add light blue print  $1\frac{1}{2} \times 41\frac{1}{2}$ " inner border strips to remaining edges. Press all seams toward inner border.
- 2.** Cut and piece blue floral  $4\frac{1}{2} \times 42$ " strips to make:
  - 2— $4\frac{1}{2} \times 49\frac{1}{2}$ " outer border strips
  - 2— $4\frac{1}{2} \times 41\frac{1}{2}$ " outer border strips

Project: Marbled Elegance



STRIP SET A  
DIAGRAM 1



STRIP SET B  
DIAGRAM 2



DIAGRAM 3



DIAGRAM 4

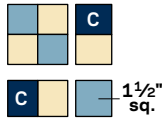


DIAGRAM 5

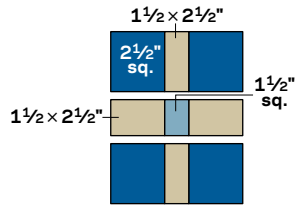


DIAGRAM 6

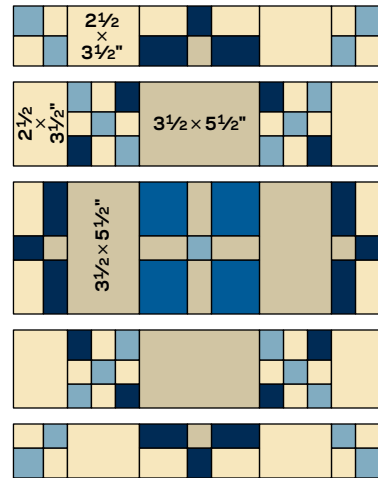


DIAGRAM 7

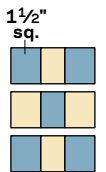
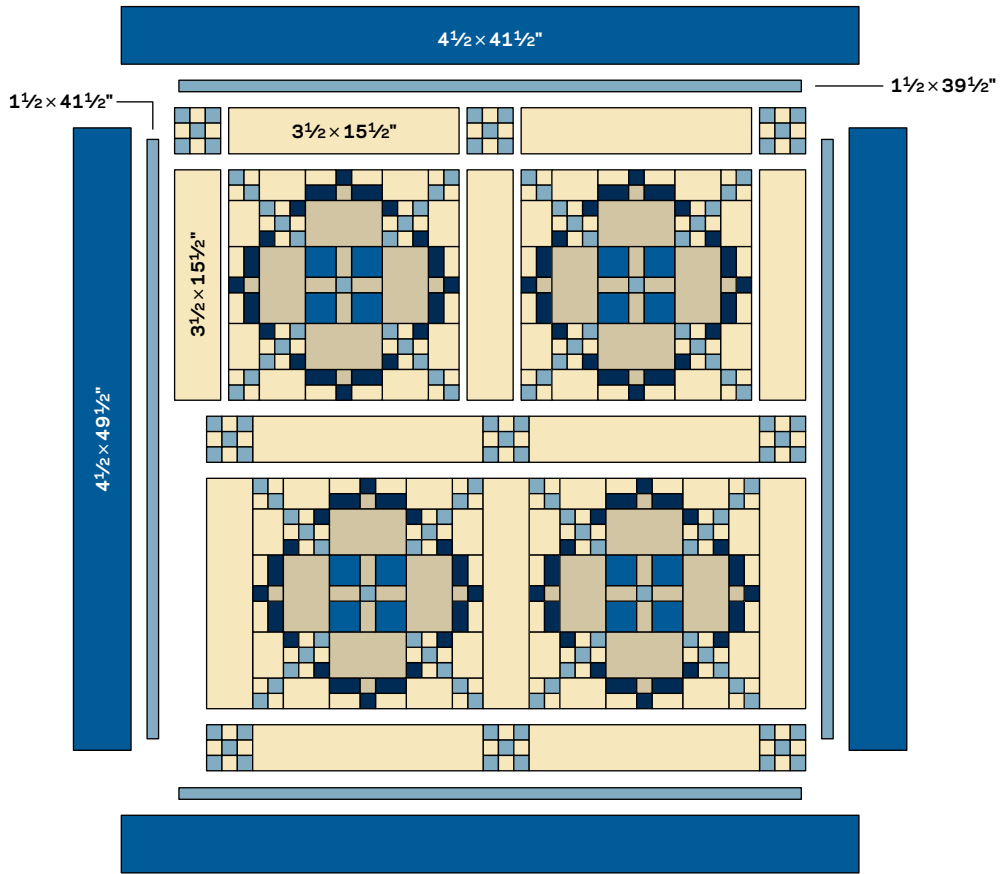


DIAGRAM 8

Project: Marbled Elegance



QUILT ASSEMBLY DIAGRAM