

Project: Radiating Diamonds

INSPIRED BY A DIFFERENT PATH FROM DESIGNER KATHIE HOLLAND (INSPIREDBYANTIQUQUILTS.BLOGSPOT.COM)
QUILT TESTER: LAURA BOEHNKE



FABRICS are from the Tea House collection by Benartex (benartex.com).

The Drunkard's Path blocks in this wall hanging form undulating diamonds that are both curved and jagged. Tone-on-tone prints allow ample space for beautiful quilting.

Project: Radiating Diamonds

Materials

- $\frac{3}{4}$ yard light blue print (block backgrounds)
- $\frac{5}{8}$ yard beige print (block backgrounds)
- $\frac{1}{2}$ yard white print (block backgrounds)
- $\frac{1}{4}$ yard each blue small floral, blue large floral, and teal teacup print (block appliqués)
- $1\frac{1}{8}$ yard blue wave print (block appliqués, outer border)
- $\frac{1}{3}$ yard orange print (block appliqués, inner border)
- $\frac{1}{2}$ yard blue tone-on-tone (binding)
- $3\frac{1}{8}$ yards backing fabric
- 55" square batting

Finished quilt: $46\frac{1}{2}$ " square

Finished block: $4\frac{1}{2}$ " square

Yardages and cutting instructions are based on 42" of usable fabric width.

Measurements include $\frac{1}{4}$ " seam allowances. Sew with right sides together unless otherwise stated.

Cut Fabrics

Cut pieces in the following order.

Instead of the curved piecing typical in Drunkard's Path blocks, these blocks are appliquéd with fusible web. The Arc Pattern is on page 3. To use fusible web for appliquing, complete the following steps.

1. Lay fusible web, paper side up, over Arc Pattern. Use a pencil to trace pattern 64 times, leaving at least $\frac{1}{2}$ " between tracings. Cut out each fusible-web shape roughly $\frac{1}{4}$ " outside traced lines.

2. Following manufacturer's instructions, press fusible-web shapes onto wrong sides of fabrics indicated in instructions that follow. Cut out fabric shapes on drawn lines. Peel off paper backings.

From light blue print, cut:

- 32—5" squares

From beige print, cut:

- 20—5" squares

From white print, cut:

- 12—5" squares

From blue small floral, cut:

- 14 of Arc Pattern

From blue large floral, cut:

- 14 of Arc Pattern

From teal teacup print, cut:

- 12 of Arc Pattern

From blue wave print, cut:

- 20 of Arc Pattern
- 5— 5×42 " strips for outer border

From orange print, cut:

- 4 of Arc Pattern
- 2— $1 \times 37\frac{1}{2}$ " strips for inner border
- 2— $1 \times 36\frac{1}{2}$ " strips for inner border

From blue tone-on-tone, cut:

- 5— $2\frac{1}{2} \times 42$ " binding strips

Appliqué Blocks

1. Referring to **Block Assembly Diagram**, position a blue small floral arc appliquéd in one corner of a light blue print 5" square, aligning straight edges. Following manufacturer's instructions, fuse in place.
2. Using a tiny zigzag stitch and thread that matches the arc appliquéd, machine-stitch curved edge of appliquéd in place to make a light blue block. The block still should be 5" square including seam allowances.

3. Using indicated fabrics, repeat steps 1 and 2 to make the following total number of blocks:
 - 10 with light blue print backgrounds/blue small floral arcs
 - 10 with light blue print backgrounds/blue large floral arcs
 - 4 with beige print backgrounds/blue large floral arcs
 - 4 with beige print backgrounds/blue small floral arcs
 - 12 with beige print backgrounds/teal teacup print arcs
 - 12 with light blue print backgrounds/blue wave print arcs
 - 8 with white print backgrounds/blue wave print arcs
 - 4 with white print backgrounds/orange print arcs

Assemble Quilt Top

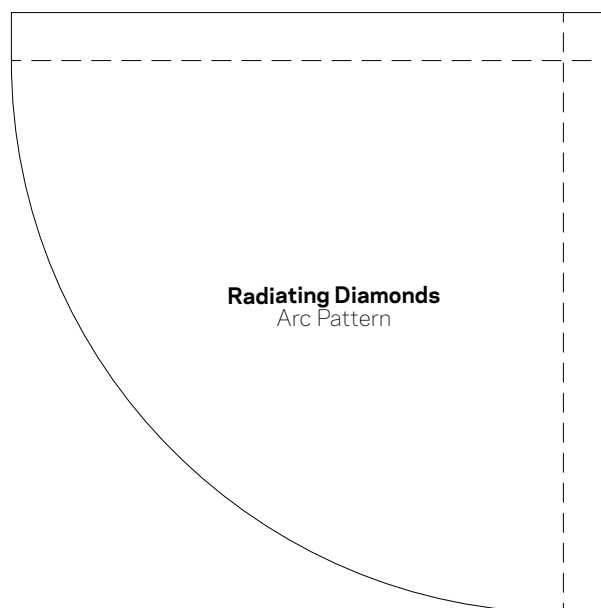
1. Referring to **Quilt Assembly Diagram** for block orientation, lay out blocks in eight rows. Sew together blocks in each row. Press seams in one direction, alternating direction with each row. Join rows to make quilt center. Press seams in one direction. The quilt center should be $36\frac{1}{2}$ " square including seam allowances.
2. Sew orange print $1 \times 36\frac{1}{2}$ " inner border strips to opposite edges of quilt center. Add orange print $1 \times 37\frac{1}{2}$ " inner border strips to remaining edges. Press all seams toward inner border.

Project: Radiating Diamonds

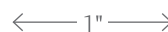
3. Cut and piece blue wave print strips to make:
 - 2—5×46½" outer border strips
 - 2—5×37½" outer border strips
4. Sew short outer border strips to opposite edges of quilt center. Add long outer border strips to remaining edges to complete quilt top. Press all seams toward outer border.

Finish Quilt

1. Layer quilt top, batting, and backing; baste.
2. Quilt as desired. To visually connect the light print block backgrounds, Handi Quilter educators Marie Eldredge and Angie Balling machine-quilted continuous designs of feathers in the light blue print and metallic gold swirls (which pick up on the metallic accents in the fabric) in the white and tan prints (**Quilting Diagram**). With clear monofilament thread, they stitched just outside each arc appliqué and continued that stitching in a small curve near the point of the adjacent arc appliqués.
3. Bind with blue tone-on-tone binding strips.



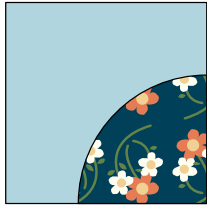
This box should measure 1".



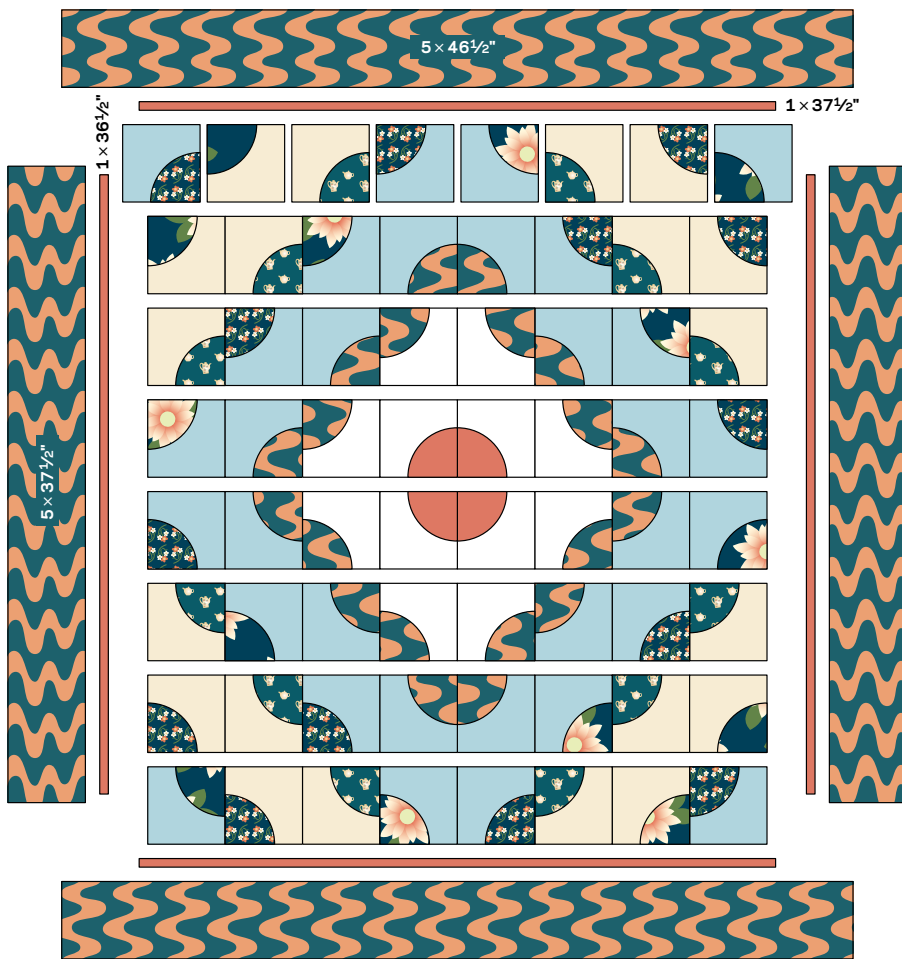
* NOTE:

When printing a downloadable pdf, set Page Scaling preference to NONE to print patterns at 100%. Do NOT "Shrink to Fit" or "Fit to Printable Area."

Project: Radiating Diamonds

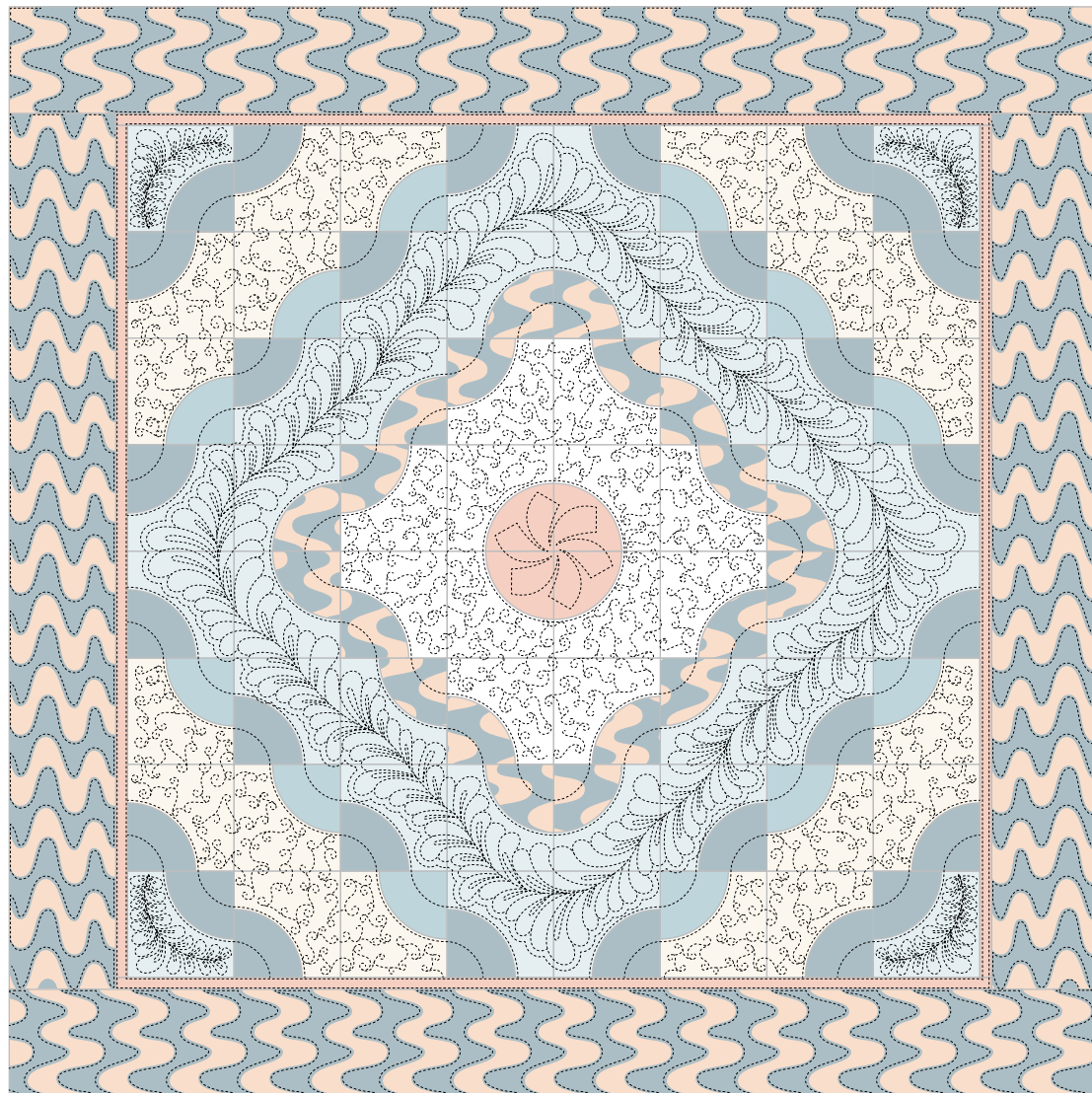


BLOCK ASSEMBLY DIAGRAM



QUILT ASSEMBLY DIAGRAM

Project: Radiating Diamonds



QUILTING DIAGRAM

Make and Use Templates

Make Templates

A template is a pattern made from extra-sturdy material so you can trace around it many times without wearing away the edges. Acrylic templates for many common shapes are available at quilt shops. Or you can make your own by duplicating printed patterns on template plastic.

To make permanent templates, purchase easy-to-cut template plastic, available at quilt shops and crafts supply stores. Lay the plastic over a printed pattern. Trace the pattern onto the plastic using a ruler and a permanent marker to ensure straight lines, accurate corners, and permanency.

For hand piecing and appliqué, make templates the exact size finished pieces will be (without seam allowances). For piecing, this means tracing the patterns' dashed lines.

For machine piecing, make templates that include seam allowances by tracing the patterns' solid and dashed lines onto the template plastic.

For easy reference, mark each template with its letter designation, grain line (if noted on the pattern), and block name. Cut out the traced shapes on their outside lines. Verify each template's shape and size by placing it over its printed pattern. Templates must be accurate; errors, however small, will compound many times as you assemble a quilt. To check templates' accuracy, make a test block before cutting the fabric pieces for an entire quilt.

Use Templates

To mark on fabric, use a pencil, white dressmaker's pencil, chalk, or a special fabric marker that makes a thin, accurate line. Do not use a ballpoint or ink pen; it may bleed if washed. Test all marking tools on a fabric scrap before using them.

To make pieces for hand piecing or appliqué, place a template facedown on the wrong side of the fabric and trace. Then reposition the template at least $\frac{1}{2}$ " away from the previous tracing (**Diagram 1**), trace again, and repeat. The lines you trace on the fabric are sewing lines. Mark cutting lines $\frac{1}{4}$ " away from the sewing lines, or estimate the distance by eye when cutting out the pieces with scissors. For hand piecing, add a $\frac{1}{4}$ " seam allowance; for hand appliqué, add a $\frac{3}{16}$ " seam allowance.

Because templates used to make pieces for machine piecing have seam allowances included, you can use common tracing lines for efficient cutting. Place a template facedown on the wrong side of the fabric and trace. Then reposition the template without a space between it and the previous tracing (**Diagram 2**); trace again and repeat. Using a rotary cutter and ruler, cut pieces out, cutting precisely on the drawn lines.

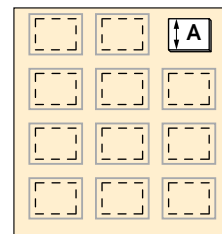


DIAGRAM 1

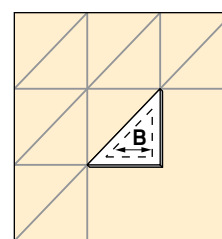


DIAGRAM 2