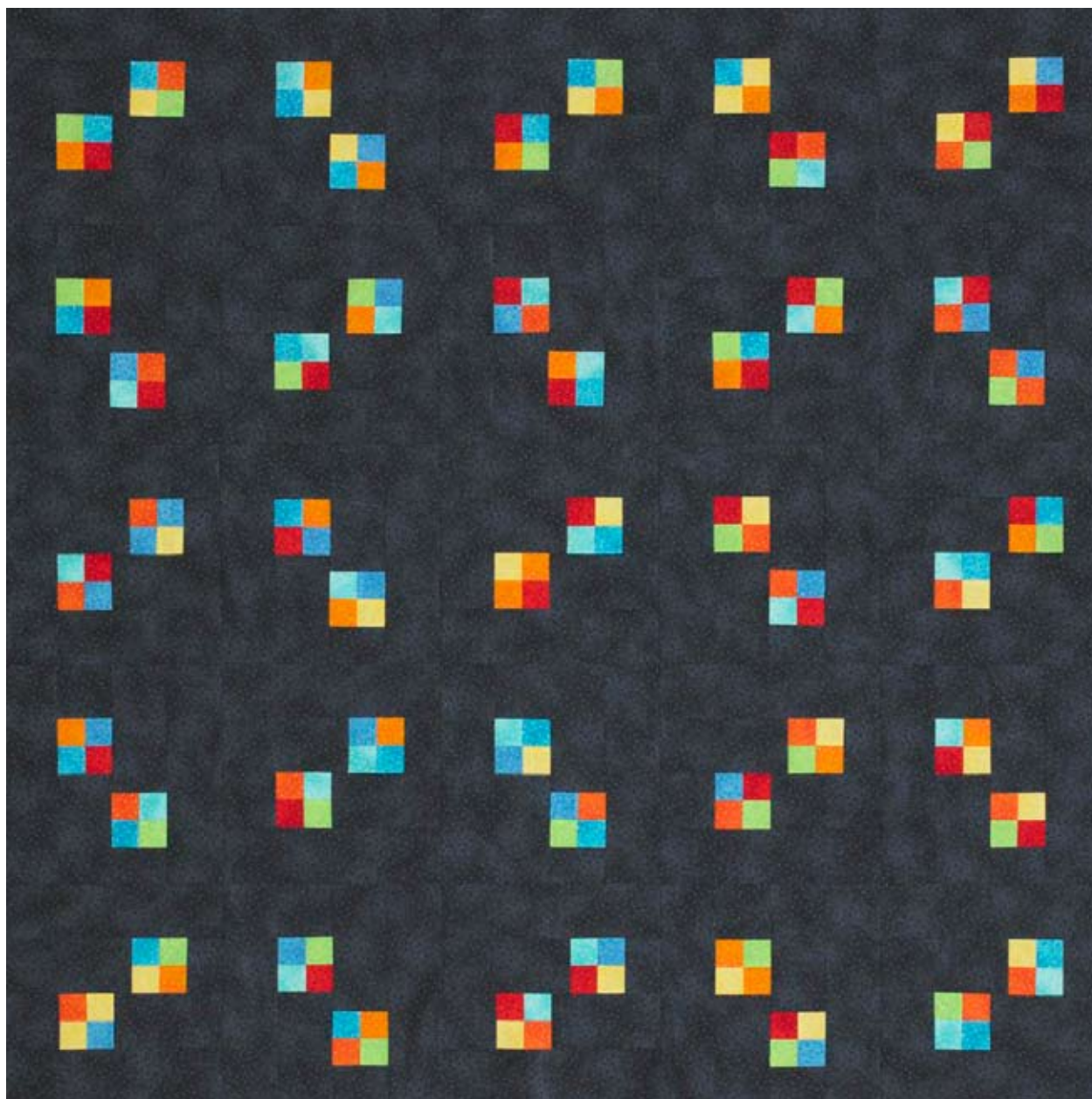


Project: Bright Four-Patch Throw

INSPIRED BY "SAND & SURF" FROM DESIGNER TRACI PAHL
QUILTMAKER: JAN RAGALLER



Rich black tone-on-tone background fabrics let lively Four-Patch units sparkle in this Amish-look quilt. Fabrics are a series of tone-on-tones from a Fusions collection for Robert Kaufman Fabrics (robertkaufman.com).

Project: Bright Four-Patch Throw

Materials

- 8—18×22" pieces (fat quarters) assorted red, red-orange, orange, yellow, blue, aqua, teal, and green tone-on-tones (blocks)
- 3½ yards black tone-on-tone (blocks, binding)
- 3¾ yards backing fabric
- 67" square batting

Finished quilt: 60½" square

Finished block: 12" square

Quantities are for 44/45"-wide, 100% cotton fabrics.

Measurements include ¼" seam allowances. Sew with right sides together unless otherwise stated.

Cut Fabrics

Cut pieces in the following order.

From red, red-orange, orange, yellow, blue, aqua, teal, and green tone-on-tones, cut:

- 26—2×18" strips

From black tone-on-tone, cut:

- 50—3½×12½" rectangles
- 25—3½×7½" rectangles
- 25—3½×6½" rectangles
- 25—3½" squares
- 25—3½×2½" rectangles
- 7—2½×42" binding strips

Assemble Four-Patch Units

1. Join two assorted tone-on-tone 2×18" strips to make a strip set. Press seam in one direction. Repeat to make 13 assorted strip sets total. Cut strip sets into 100—2"-wide segments (Diagram 1).
2. Sew together two assorted segments to make a Four-Patch unit (Diagram 2). Press seam in one direction. The unit should be 3½" square including seam allowances. Repeat to make 50 assorted Four-Patch units total.

Assemble Blocks

1. Referring to Diagram 3 for placement, lay out two Four-Patch units and the following black tone-on-tone pieces: two 3½×12½" rectangles, one 3½×7½" rectangle, one 3½×6½" rectangle, one 3½" square, and one 3½×2½" rectangle in four rows.
2. Sew together pieces in each row. Press seams toward rectangles. Join rows to make a block. Press seams in one direction. The block should be 12½" square including seam allowances.
3. Repeat steps 1 and 2 to make 25 assorted blocks total.

Assemble Quilt Top

1. Referring to Quilt Assembly Diagram, lay out blocks in five horizontal rows, rotating every other block 90 degrees.
2. Sew together blocks in each row. Press seams toward the blocks with the long rectangles in vertical position.
3. Join rows to complete quilt top. Press seams in one direction.

Finish Quilt

1. Layer quilt top, batting and backing; baste. Quilt as desired.
2. Bind with black tone-on-tone binding strips.

Project: Bright Four-Patch Throw

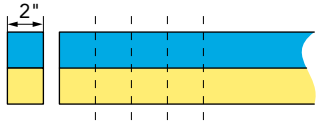


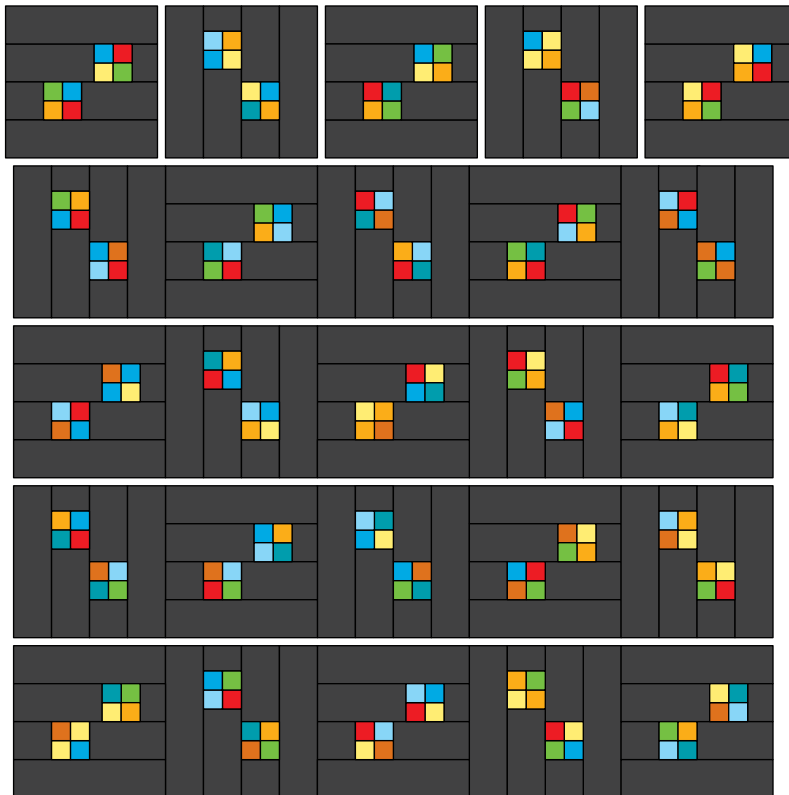
DIAGRAM 1



DIAGRAM 2



DIAGRAM 3



QUILT ASSEMBLY DIAGRAM