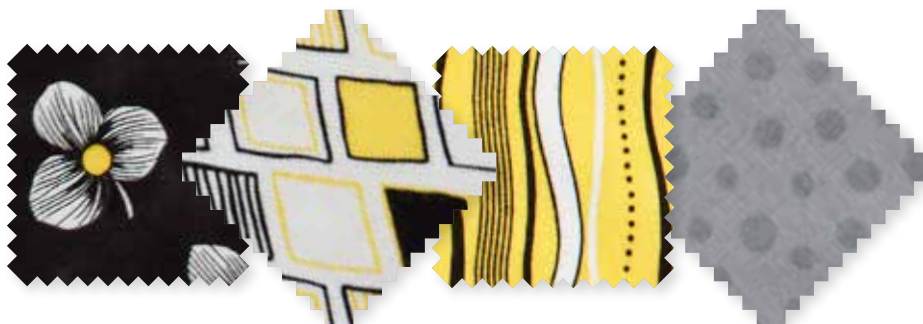


Project: Starring Diamonds Wall Hanging

INSPIRED BY MAKE THE CUT FROM DESIGNER WENCHE WOLFF HATLING OF NORTHERN QUILTS (NORTHERNQUILTS.NO)
QUILT TESTER: LAURA BOEHNKE



FABRICS are from the Sunburst collection by Studio 8 for Quilting Treasures (quiltingtreasures.com).



Fussy-cut motifs fill star centers in this bright wall hanging. Standout geometric prints mimic the diamond and hexagon shapes of the pieced quilt center.

Project: Starring Diamonds Wall Hanging

Materials

Amounts specified for the first three fabrics in this list are minimums. If you choose to fussy-cut prints, as quilt tester Laura Boehnke did, the yardage needed will depend on your chosen print or pattern.

- 8—3" squares assorted prints (star unit hexagons)
- 8—12" squares assorted light to dark prints (star points)
- 2—12" squares white dot (star unit diamonds)
- $\frac{5}{8}$ yard gray dot (star unit diamonds, quilt center background)
- 1 yard yellow dot (quilt center background, binding)
- $\frac{1}{4}$ yard black stripe (inner border)
- $\frac{3}{4}$ yard diamond print (middle border)
- $\frac{5}{8}$ yard black print (outer border)
- 2 $\frac{1}{2}$ yards backing fabric
- 45×61" batting

Finished quilt: 36 $\frac{1}{2}$ ×53"

Yardages and cutting instructions are based on 42" of usable fabric width.

Measurements include $\frac{1}{4}$ " seam allowance. Sew with right sides together unless otherwise stated.

About the Method

Because of the many set-in seams in this project, hand-piecing is the recommended assembly method. Careful machine-sewing from dot to dot also would work.

Cut Fabrics

Cut pieces in the following order.

Patterns are on pages 5–7. To speed the cutting process, Laura used acrylic templates to rotary-cut pieces A, B, and C.

To make your own templates, see *Make and Use Templates*, page 8. Be sure to transfer the dots to the templates, then to the fabric pieces. These dots are matching points and are used when joining and setting in pieces.

From each assorted print, cut:

- 1 of Pattern A

From each assorted light to dark print, cut:

- 6 of Pattern B

From white dot, cut:

- 12 of Pattern C
- 6 of Pattern D

From gray dot, cut:

- 36 of Pattern C
- 8 of Pattern D

From yellow dot, cut:

- 5—2 $\frac{1}{2}$ ×42" binding strips
- 6 of each of patterns D and E
- 4 of Pattern F

From black stripe, cut:

- 2—2×35" inner border strips
- 2—2×21 $\frac{1}{2}$ " inner border strips

From diamond print, cut:

- 2—5×38" middle border strips
- 2—5×30 $\frac{1}{2}$ " middle border strips

From black print, cut:

- 5—3 $\frac{1}{2}$ ×42" strips for outer border

Assemble Star Units

Whether you are hand- or machine-sewing, begin and end all star unit seams at the marked matching points. Not sewing the seam allowances down allows you to set in seams and to press finished units in the desired direction once an entire unit is pieced.

To match up dots when piecing, stab a pin through one dot from the wrong side of the fabric, then come up at the second dot.

1. Gather one print A hexagon, six B star points from a single light or dark print, and six white or gray dot C diamonds. Lay out pieces in their finished positions according to **Diagram 4**.
2. Layer A hexagon and one B star point with right sides together, aligning the edges to be joined. Join pieces with a $\frac{1}{4}$ " seam allowance, carefully sewing from dot to dot (**Diagram 1**). If you are hand-piecing, do not cut your thread; instead, take a tiny backstitch at the dot and sew seams that follow with the same thread. Open pieces and finger-press seam toward hexagon.
3. Sew an adjacent star point to an adjacent hexagon edge. Repeat to add remaining star points to hexagon (**Diagram 2**).
4. Starting from the hexagon, sew together short edges of two adjacent star points. Referring to **Diagram 3**, set a C diamond into the joined points. Use a continuous thread and start sewing from an outer corner; stitch toward the center, then away from the center. Repeat to join points and set in remaining diamonds to make a star unit. Press star unit flat.
5. Repeat steps 1–4 to make eight star units total.

Project: Starring Diamonds Wall Hanging

Assemble Quilt Center

1. Referring to quilt center top row in **Quilt Assembly Diagram**, lay out two star units, two yellow dot D triangles, two white dot D triangles, and two yellow dot E triangles. (If you want directional fussy-cut motifs to go in one direction, pay attention to hexagon orientation in star units.) Sew one white dot D triangle and one yellow dot D triangle to opposite edges of each star unit. Press seams toward D triangles. Then join all pieces in the row. Press seams toward right-hand end of row. Trim excess yellow dot D triangles even with long edges of E triangles to make a two-star row. Repeat to make three two-star rows total.

2. Referring to quilt center second row in **Quilt Assembly Diagram**, lay out one star unit, four gray dot D triangles, and two yellow dot F pieces. First sew two D triangles to opposite edges of star unit. Then sew a D triangle to each F piece. Press seams toward D triangles. Join all pieces in the row to make a one-star row. Press seams toward left-hand end of row. Repeat to make a second one-star row.

3. Referring to **Quilt Assembly Diagram**, join two-star rows and one-star rows to make quilt center. Press seams in one direction. The quilt center should be $18\frac{1}{2} \times 34\frac{3}{8}$ " including seam allowances.

Add Borders

- 1.** Sew black stripe 2×35 " inner border strips to long edges of quilt center. Add black stripe $2 \times 21\frac{1}{2}$ " inner border strips to remaining edges. Press all seams toward inner border.
- 2.** Sew diamond print 5×38 " middle border strips to long edges of quilt center. Add diamond print $5 \times 30\frac{1}{2}$ " middle border strips to remaining edges. Press all seams toward middle border.
- 3.** Cut and piece black print $3\frac{1}{2} \times 42$ " strips to make:
 - 2— $3\frac{1}{2} \times 47$ " outer border strips
 - 2— $3\frac{1}{2} \times 36\frac{1}{2}$ " outer border strips
- 4.** Sew long outer border strips to long edges of quilt center. Add short outer border strips to remaining edges to complete quilt top. Press all seams toward outer border.

Finish Quilt

- 1.** Layer quilt top, batting, and backing; baste. Quilt as desired.
- 2.** Bind with yellow dot binding strips.

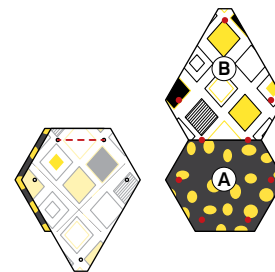


DIAGRAM 1

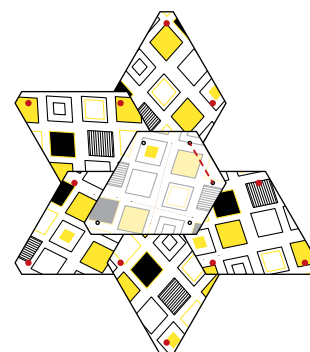


DIAGRAM 2

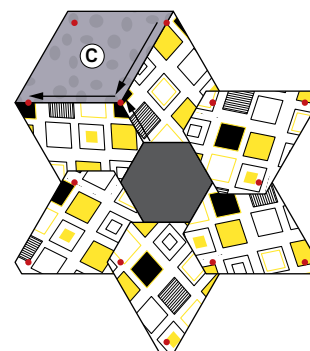


DIAGRAM 3

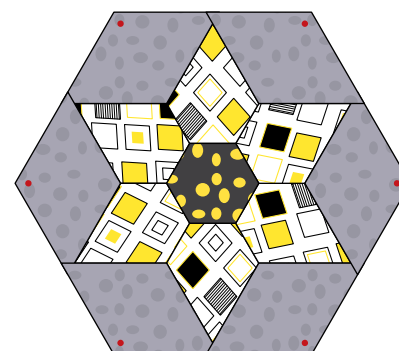
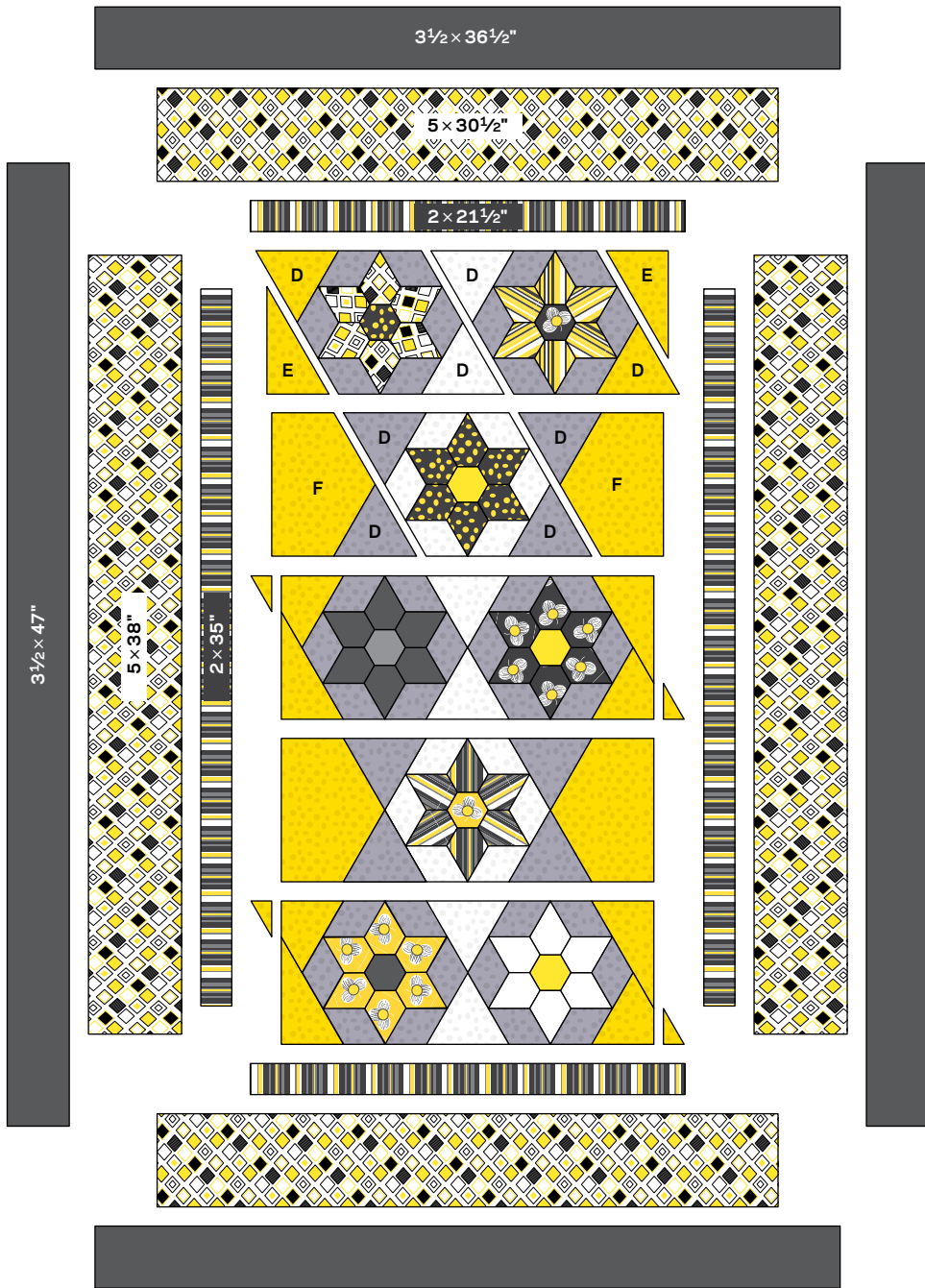


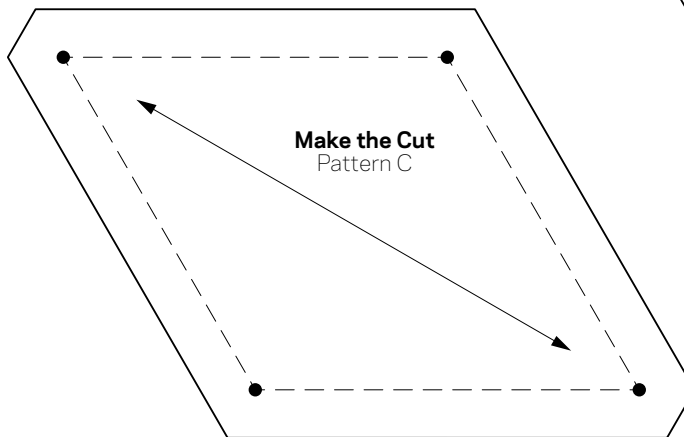
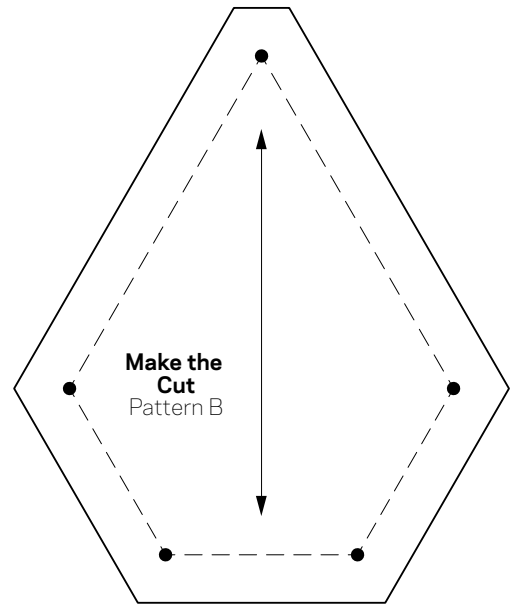
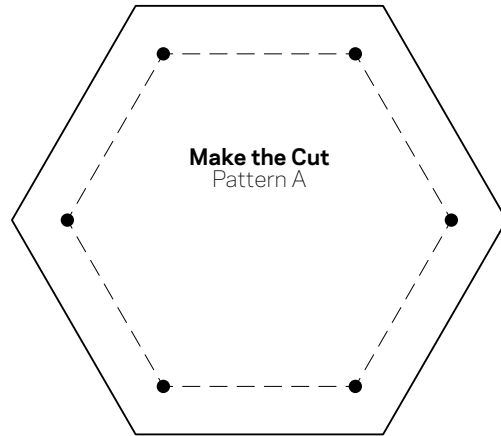
DIAGRAM 4

Project: Starring Diamonds Wall Hanging

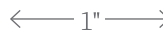


QUILT ASSEMBLY DIAGRAM

Project: Starring Diamonds Wall Hanging



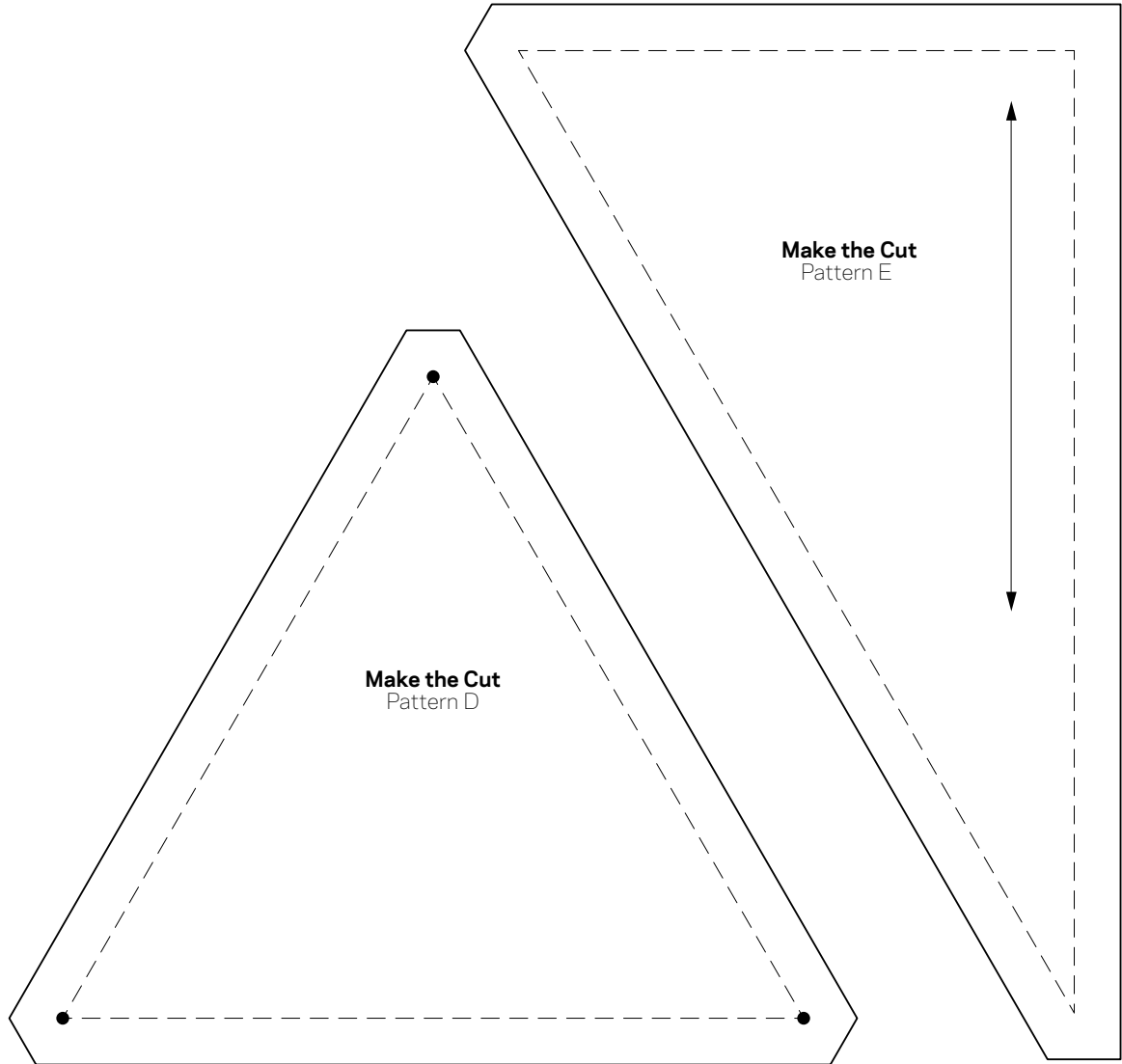
This box should measure 1".



*** NOTE:**

When printing a downloadable pdf, set Page Scaling preference to NONE to print patterns at 100%. Do NOT "Shrink to Fit" or "Fit to Printable Area."

Project: Starring Diamonds Wall Hanging

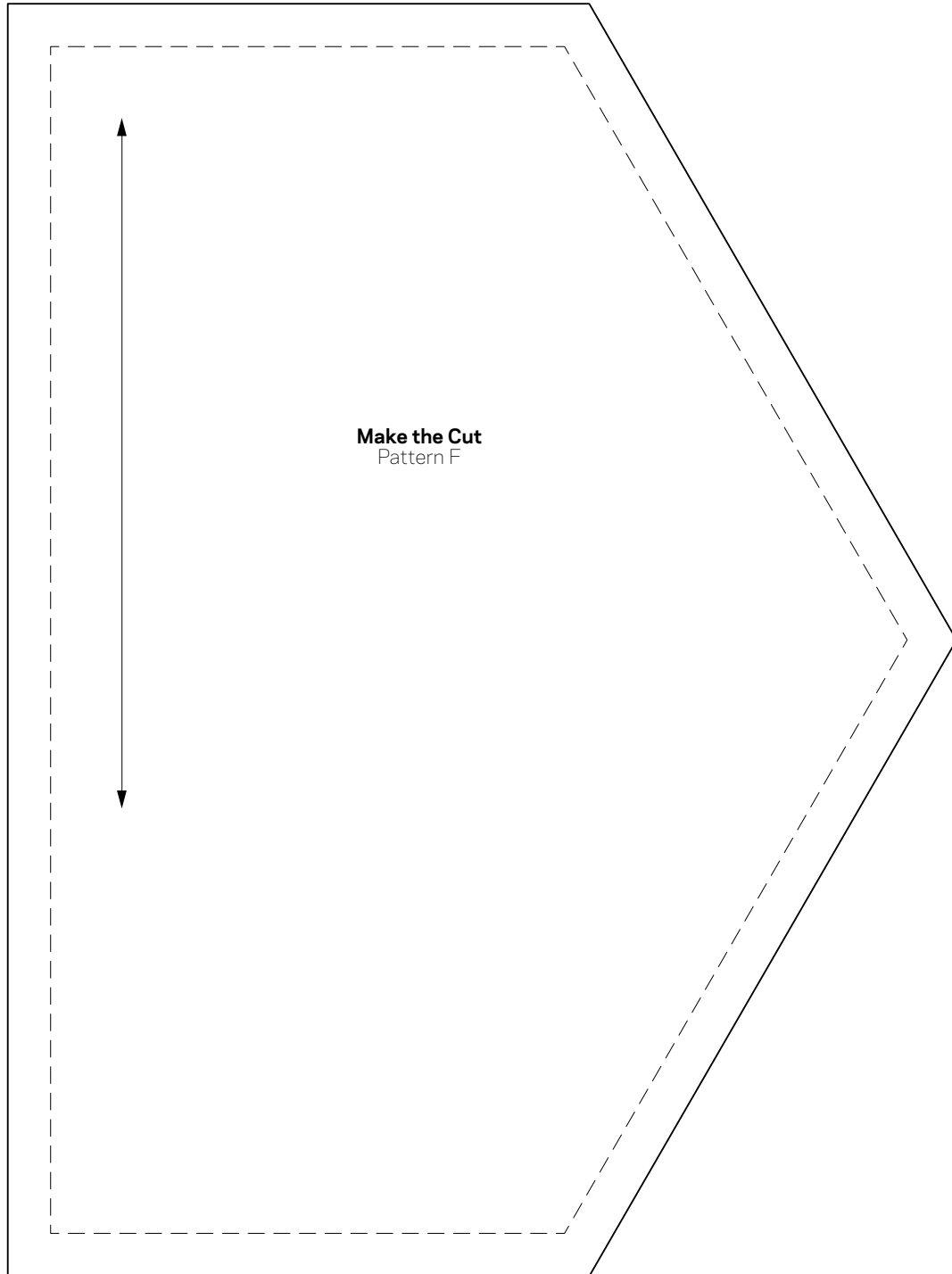


This box should measure 1".
← 1" →

*** NOTE:**

When printing a downloadable pdf, set Page Scaling preference to NONE to print patterns at 100%. Do NOT "Shrink to Fit" or "Fit to Printable Area."

Project: Starring Diamonds Wall Hanging



Make the Cut
Pattern F

This box should
measure 1".

← 1" →

*** NOTE:**

When printing a downloadable pdf, set Page Scaling preference to NONE to print patterns at 100%. Do NOT "Shrink to Fit" or "Fit to Printable Area."

Make and Use Templates

Make Templates

A template is a pattern made from extra-sturdy material so you can trace around it many times without wearing away the edges. Acrylic templates for many common shapes are available at quilt shops. Or you can make your own by duplicating printed patterns on template plastic.

To make permanent templates, purchase easy-to-cut template plastic, available at quilt shops and crafts supply stores. Lay the plastic over a printed pattern. Trace the pattern onto the plastic using a ruler and a permanent marker to ensure straight lines, accurate corners, and permanency.

For hand piecing and appliqué, make templates the exact size finished pieces will be (without seam allowances). For piecing, this means tracing the patterns' dashed lines.

For machine piecing, make templates that include seam allowances by tracing the patterns' solid and dashed lines onto the template plastic.

For easy reference, mark each template with its letter designation, grain line (if noted on the pattern), and block name. Cut out the traced shapes on their outside lines. Verify each template's shape and size by placing it over its printed pattern. Templates must be accurate; errors, however small, will compound many times as you assemble a quilt. To check templates' accuracy, make a test block before cutting the fabric pieces for an entire quilt.

Use Templates

To mark on fabric, use a pencil, white dressmaker's pencil, chalk, or a special fabric marker that makes a thin, accurate line. Do not use a ballpoint or ink pen; it may bleed if washed. Test all marking tools on a fabric scrap before using them.

To make pieces for hand piecing or appliqué, place a template facedown on the wrong side of the fabric and trace. Then reposition the template at least $\frac{1}{2}$ " away from the previous tracing (**Diagram 1**), trace again, and repeat. The lines you trace on the fabric are sewing lines. Mark cutting lines $\frac{1}{4}$ " away from the sewing lines, or estimate the distance by eye when cutting out the pieces with scissors. For hand piecing, add a $\frac{1}{4}$ " seam allowance; for hand appliqué, add a $\frac{3}{16}$ " seam allowance.

Because templates used to make pieces for machine piecing have seam allowances included, you can use common tracing lines for efficient cutting. Place a template facedown on the wrong side of the fabric and trace. Then reposition the template without a space between it and the previous tracing (**Diagram 2**); trace again and repeat. Using a rotary cutter and ruler, cut pieces out, cutting precisely on the drawn lines.

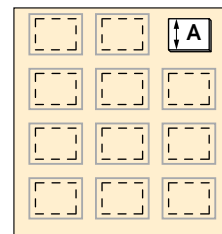


DIAGRAM 1

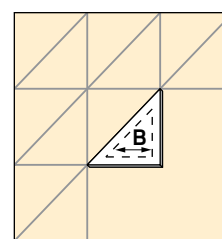


DIAGRAM 2