

Project: Tumbling Leaves

DESIGNER: GAIL ABELOE
QUILTMAKER: KATHLEEN WILLIAMS



Project: Tumbling Leaves

Cut Fabrics

Cutting Instructions: Crib/Wall

Assorted Batiks

- 20 - 3⁷/₈" squares
- 30 - 3¹/₂" squares
- 40 - 2³/₈" squares
- 60 - 2" squares
- 10 - 1¹/₈×5" strips
- 20 - 1×3" strips

Tan print

- 5 - 4×42" strips for border
- 5 - 2¹/₂×42" strips for binding
- 10 - 5" squares
- 10 - 3⁷/₈" squares
- 10 - 3¹/₂" squares
- 20 - 2³/₈" squares
- 20 - 2" squares

Dark Green Batik

- 2 - 1¹/₄×36¹/₂" border strips
- 3 - 1¹/₄×42" strips for border

Cutting Instructions: Lap/Twin

Assorted Batiks

- 48 - 3⁷/₈" squares
- 72 - 3¹/₂" squares
- 96 - 2³/₈" squares
- 144 - 2" squares
- 24 - 1¹/₈×5" strips
- 48 - 1×3" strips

Tan print

- 7 - 4×42" strips for border
- 8 - 2¹/₂×42" strips for binding
- 48 - 5" squares
- 48 - 3⁷/₈" squares
- 48 - 3¹/₂" squares
- 96 - 2³/₈" squares
- 96 - 2" squares

Dark Green Batik

- 7 - 1¹/₄×36¹/₂" strips for border

Cutting Instructions: Full/Queen

Assorted Batiks

- 80 - 3⁷/₈" squares
- 120 - 3¹/₂" squares
- 160 - 2³/₈" squares
- 240 - 2" squares
- 40 - 1¹/₈×5" strips
- 80 - 1×3" strips

Tan print

- 9 - 4×42" strips for border
- 10 - 2¹/₂×42" strips for binding
- 80 - 5" squares
- 80 - 3⁷/₈" squares
- 80 - 3¹/₂" squares
- 160 - 2³/₈" squares
- 160 - 2" squares

Dark Green Batik

- 9 - 1¹/₄×36¹/₂" strips for border

Cutting Instructions: King

Assorted Batiks

- 100 - 3⁷/₈" squares
- 150 - 3¹/₂" squares
- 200 - 2³/₈" squares
- 300 - 2" squares
- 50 - 1¹/₈×5" strips
- 100 - 1×3" strips

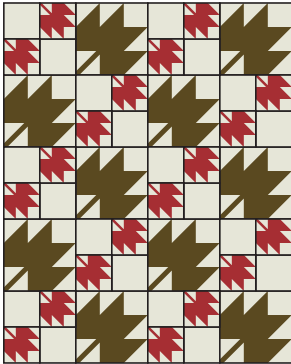
Tan print

- 10 - 4×42" strips for border
- 10 - 2¹/₂×42" strips for binding
- 100 - 5" squares
- 100 - 3⁷/₈" squares
- 100 - 3¹/₂" squares
- 200 - 2³/₈" squares
- 200 - 2" squares

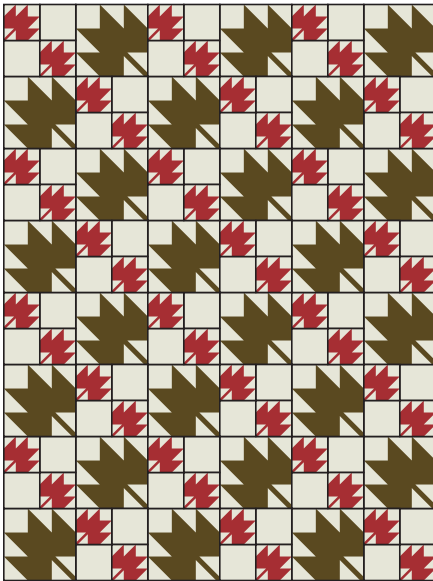
Dark Green Batik

- 10 - 1¹/₄×36¹/₂" strips for border

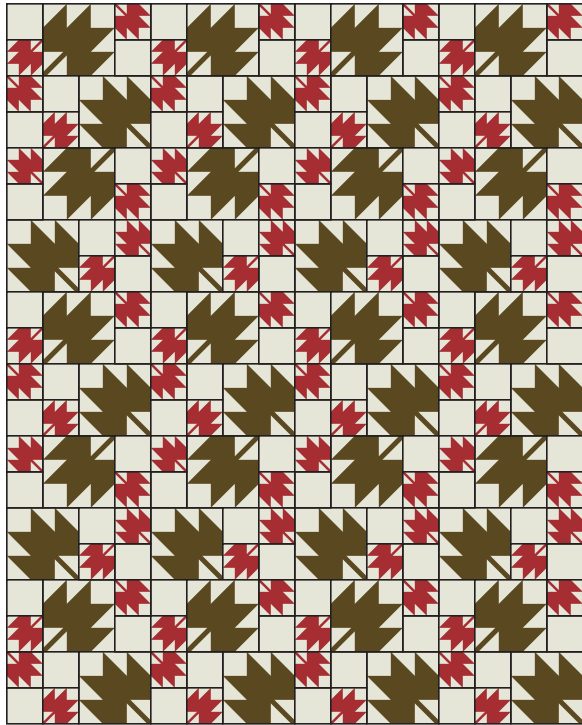
Project: Tumbling Leaves



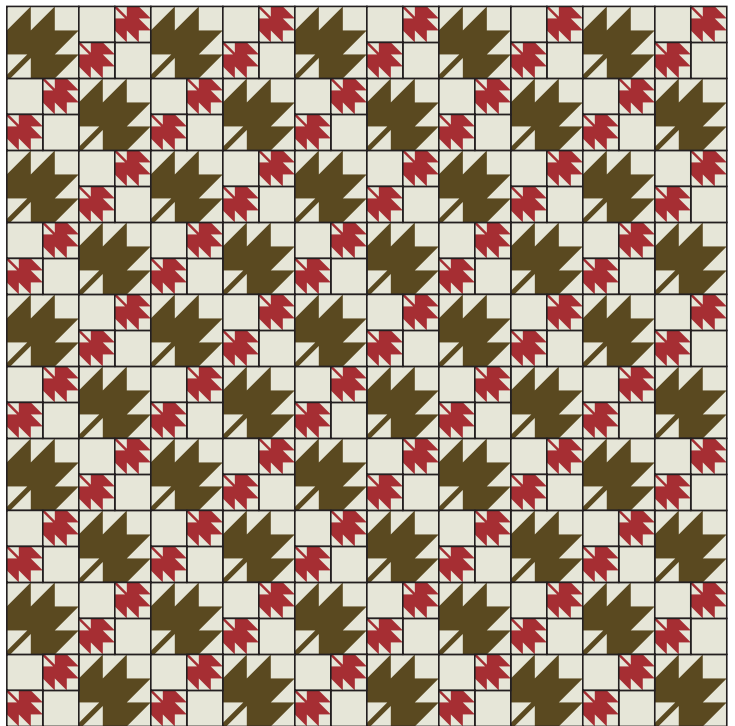
QUILT ASSEMBLY DIAGRAM
CRIB/WALL



QUILT ASSEMBLY DIAGRAM LAP/TWIN



QUILT ASSEMBLY DIAGRAM FULL/QUEEN



QUILT ASSEMBLY DIAGRAM KING