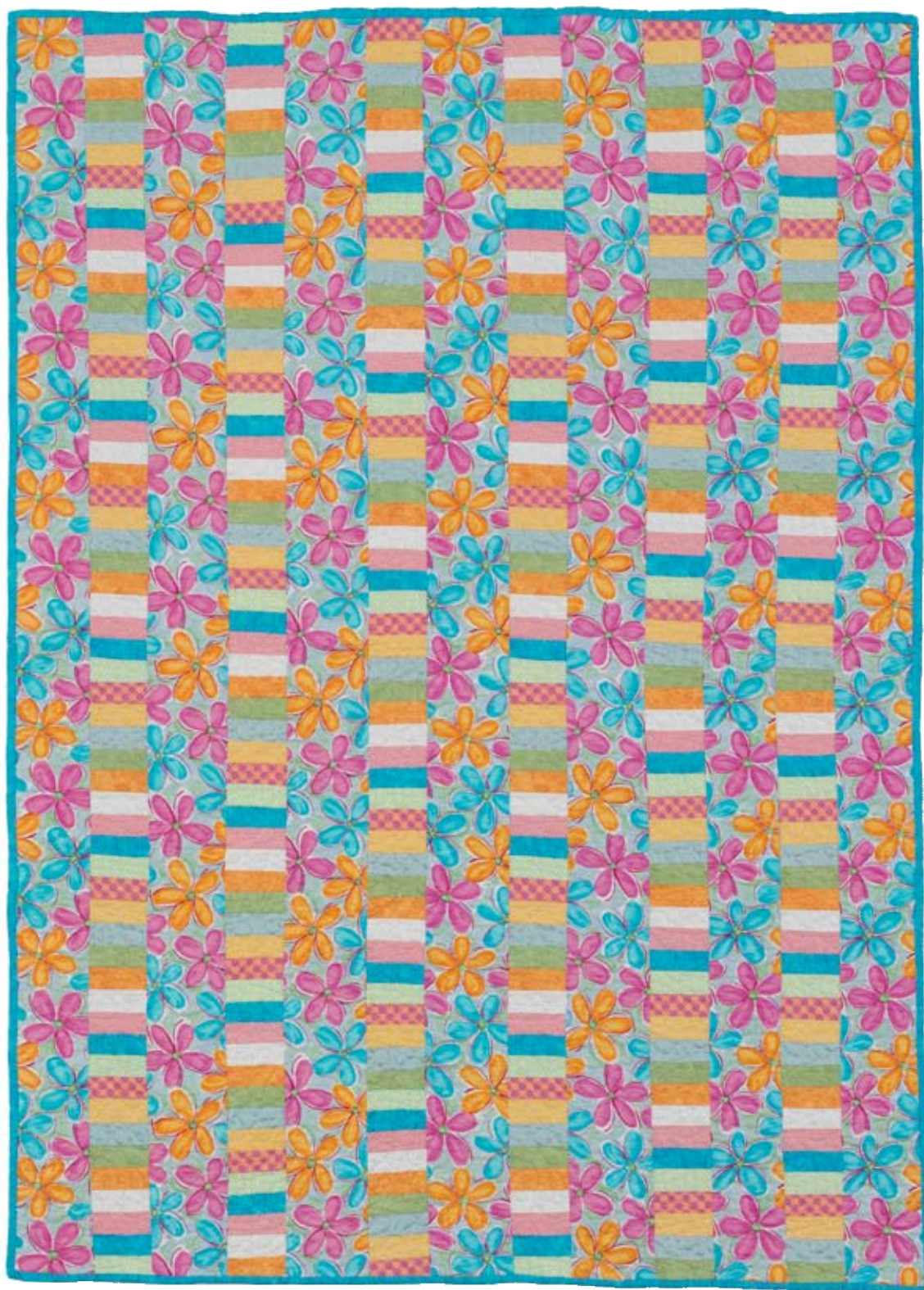


Project: Sweet Strips

QUILTMAKER: MARY PEPPER  
MACHINE QUILTER: RANDY SIMDORN



## Project: Sweet Strips

This pint-size quilt is perfect for a baby quilt or for a toddler to cuddle up with on a cool fall day.

### Materials

- 1 yard total assorted pastel prints, polka dots, and solids (pieced rows)
- 1¾ yard floral (sashing and border)
- ½ yard solid turquoise (binding)
- 3 yards backing fabric
- 54×65" batting

Finished quilt: 48×58½"

Quantities are for 44/45"-wide, 100% cotton fabrics.

Measurements include ¼" seam allowances. Sew with right sides together unless otherwise stated.

### Cut Fabrics

Cut pieces in the following order. Cut sashing and border strips lengthwise (parallel to the selvages).

**From assorted pastel print, polka dot, and solid, cut:**

- 348—1½×3½" rectangles

**From floral, cut:**

- 2—5¼×58½" border strips
- 5—4½×58½" sashing strips

**From solid turquoise, cut:**

- 6—2½×42" binding strips

### Assemble Pieced Rows

Referring to **Quilt Assembly Diagram**, lay out 58 assorted print 1½×3½" rectangles in a row. Sew together rectangles; press seams in one direction to make a pieced row. The pieced row should be 3½×58½" including seam allowances. Repeat to make six pieced rows total.

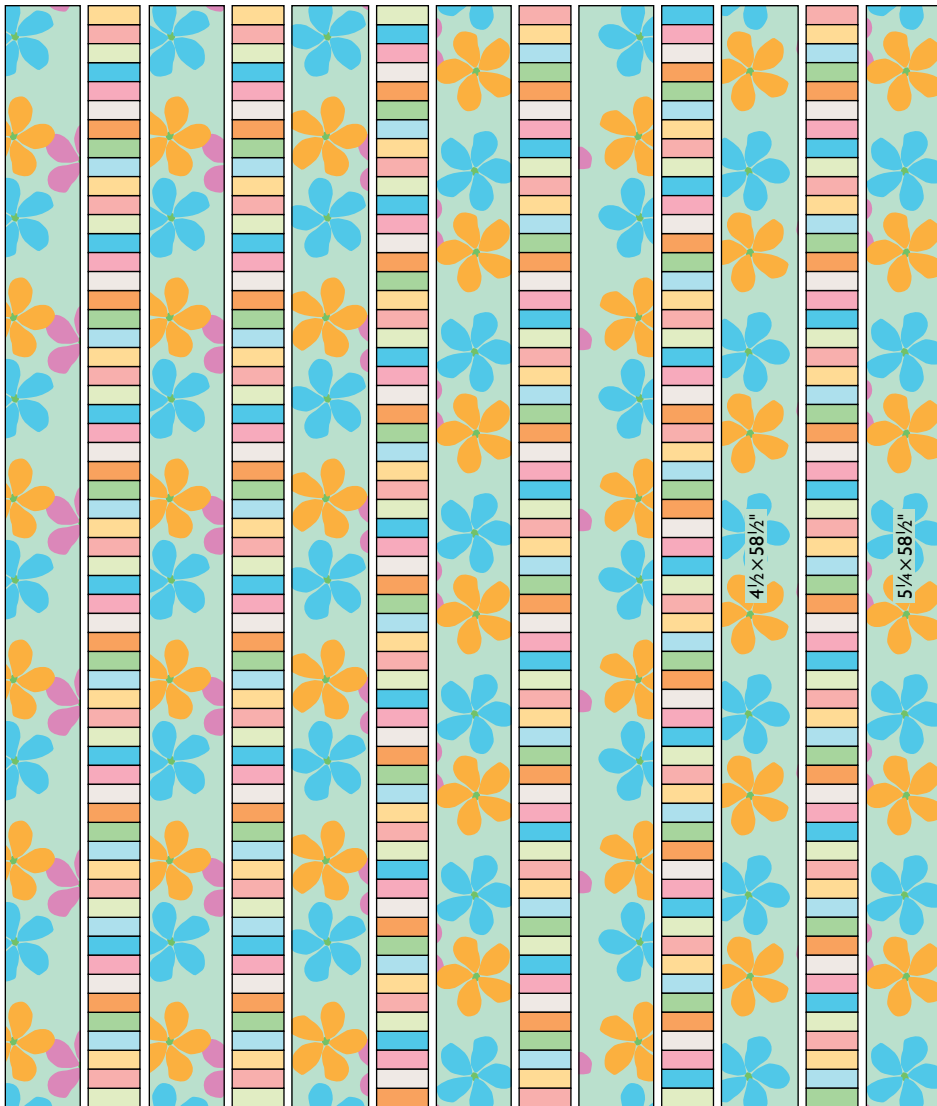
### Assemble Quilt Top

1. Referring to **Quilt Assembly Diagram**, lay out pieced rows and floral 4½×58½" sashing strips and 5¼×58½" border strips in 13 rows.
2. Sew together rows; press seams in one direction.

### Finish Quilt

1. Layer quilt top, batting, and backing; baste. Quilt as desired.
2. Bind with solid turquoise binding strips.

Project: Sweet Strips



QUILT ASSEMBLY DIAGRAM