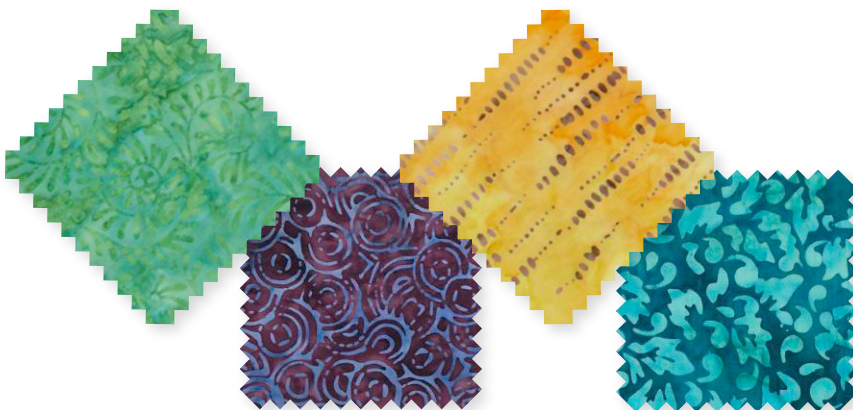


Project: 81-Patch Wall Hanging

INSPIRED BY "CAPTURE THE CANYON" FROM COLLECTOR JULIE HENDRICKSEN
QUILTMAKER: LAURA BOEHNKE



Tonga Batiks from Timeless Treasures were used to make this bright nine-block wall hanging. By alternating the values of batiks in the blocks (five are medium/dark and four are medium/light), the quilter created a secondary Nine-Patch pattern. Strip piecing makes quick work of this quilt's construction, and it's good practice for perfecting your $\frac{1}{4}$ " seams.

Project: 81-Patch Wall Hanging

Plan the Quilt

This quilt uses two fabrics in each block. Five blocks are medium/dark, and four blocks are medium/light which creates a secondary Nine-Patch design.

Want to make a scrappier version of this quilt? Go to *page 3* for ideas using multiple fabrics in each block. For a scrappy version, you'll need 729—1 $\frac{3}{4}$ " squares total (81 for each of the nine—11 $\frac{3}{4}$ " square-finished blocks).

Materials

- 5— $\frac{1}{4}$ -yard pieces assorted dark batiks in purple and blue (blocks)
- 9— $\frac{1}{4}$ -yard pieces assorted medium batiks in blue, red, green, orange, and purple (blocks)
- 4— $\frac{1}{4}$ -yard pieces assorted light batiks in yellow, pink, and green (blocks)
- $\frac{5}{8}$ yard blue-and-black batik (border, binding)
- 2 $\frac{1}{2}$ yards backing fabric
- 46" square batting

Finished quilt: 39 $\frac{1}{4}$ " square

Finished block: 11 $\frac{3}{4}$ " square

Quantities are for 44/45"-wide, 100% cotton fabrics.

Measurements include $\frac{1}{4}$ " seam allowances. Sew with right sides together unless otherwise stated.

Cut Fabrics

From assorted dark batiks, cut:

- 45—1 $\frac{3}{4}$ ×9" strips (5 matching sets of 9 strips)

From assorted medium batiks, cut:

- 81—1 $\frac{3}{4}$ ×9" strips (9 matching sets of 9 strips)

From assorted light batiks, cut:

- 36—1 $\frac{3}{4}$ ×9" strips (4 matching sets of 9 strips)

From blue-and-black batik, cut:

- 4—2 $\frac{1}{2}$ ×42" binding strips
- 2—3×39 $\frac{1}{4}$ " border strips
- 2—3×34 $\frac{1}{4}$ " border strips

Assemble Blocks

1. Aligning long edges, sew together five matching assorted dark batik strips and four matching assorted medium strips to make strip set A (**Diagram 1**). Press seams toward assorted dark batik. Cut strip set into five 1 $\frac{3}{4}$ "-wide A segments total.

2. Sew together four matching assorted dark batik strips and five matching assorted medium batik strips to make strip set B (**Diagram 2**). Press seams toward assorted dark batik. Cut strip set into four 1 $\frac{3}{4}$ "-wide B segments total.

3. Referring to **Diagram 3**, join five A segments and four B segments to make a block. Press seams in one direction. The block should be 11 $\frac{3}{4}$ " square including seam allowances.

4. Repeat steps 1-3 to make five dark/medium blocks total.

5. Using assorted medium batik strips and assorted light batik strips, repeat steps 1-3 to make four medium/light blocks total.

Assemble Quilt Center

1. Referring to photo on *page 1*, lay out five dark/medium blocks and four medium/light blocks in three rows.

2. Sew together blocks in each row; press seams in one direction, alternating direction with each row. Join rows to complete quilt top. Press seams in one direction.

Add Border

1. Add short border strips to opposite edges of quilt center.

2. Add long border strips to remaining edges to complete quilt top. Press all seams toward border.

Finish Quilt

1. Layer quilt top, batting, and backing; baste. Quilt as desired.

2. Bind with blue-and-black batik binding strips.

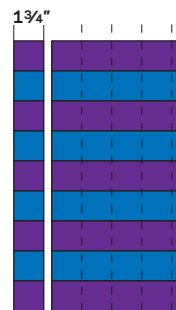


DIAGRAM 1



DIAGRAM 2

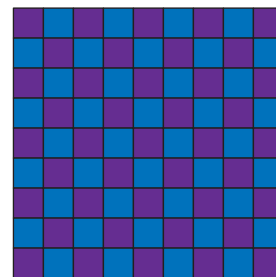
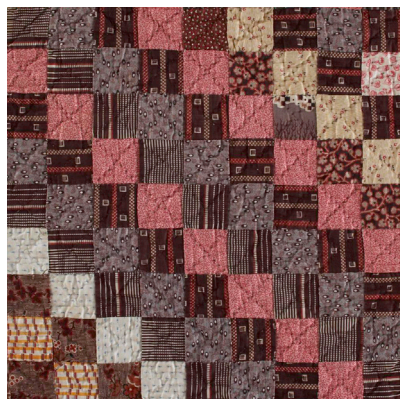


DIAGRAM 3

Project: 81-Patch Wall Hanging

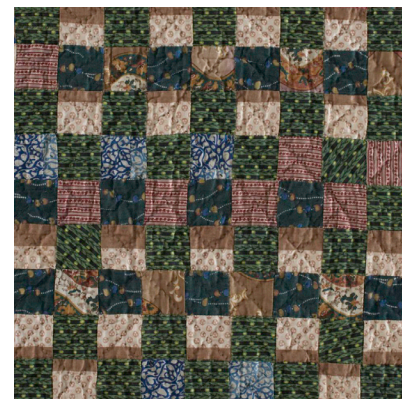
It is amazing how just one block can produce so many different looks. If you want to use scraps to make your quilt, here are five additional ways to arrange 81-Patch blocks.



1. Diagonal rows of the same color bring a scrappy block together, even when the fabrics are diverse.



2. Outer rows of dark prints around medium or light prints in the same colors can create a frame. In this case, the quiltmaker chose to frame the block in dark blue and brown.



3. A regular arrangement of colors can result in a woven effect.



4. Pieces of similar value and scale make a subtle checkerboard pattern.



5. A quilt made entirely of blocks in this layout would produce a secondary design.