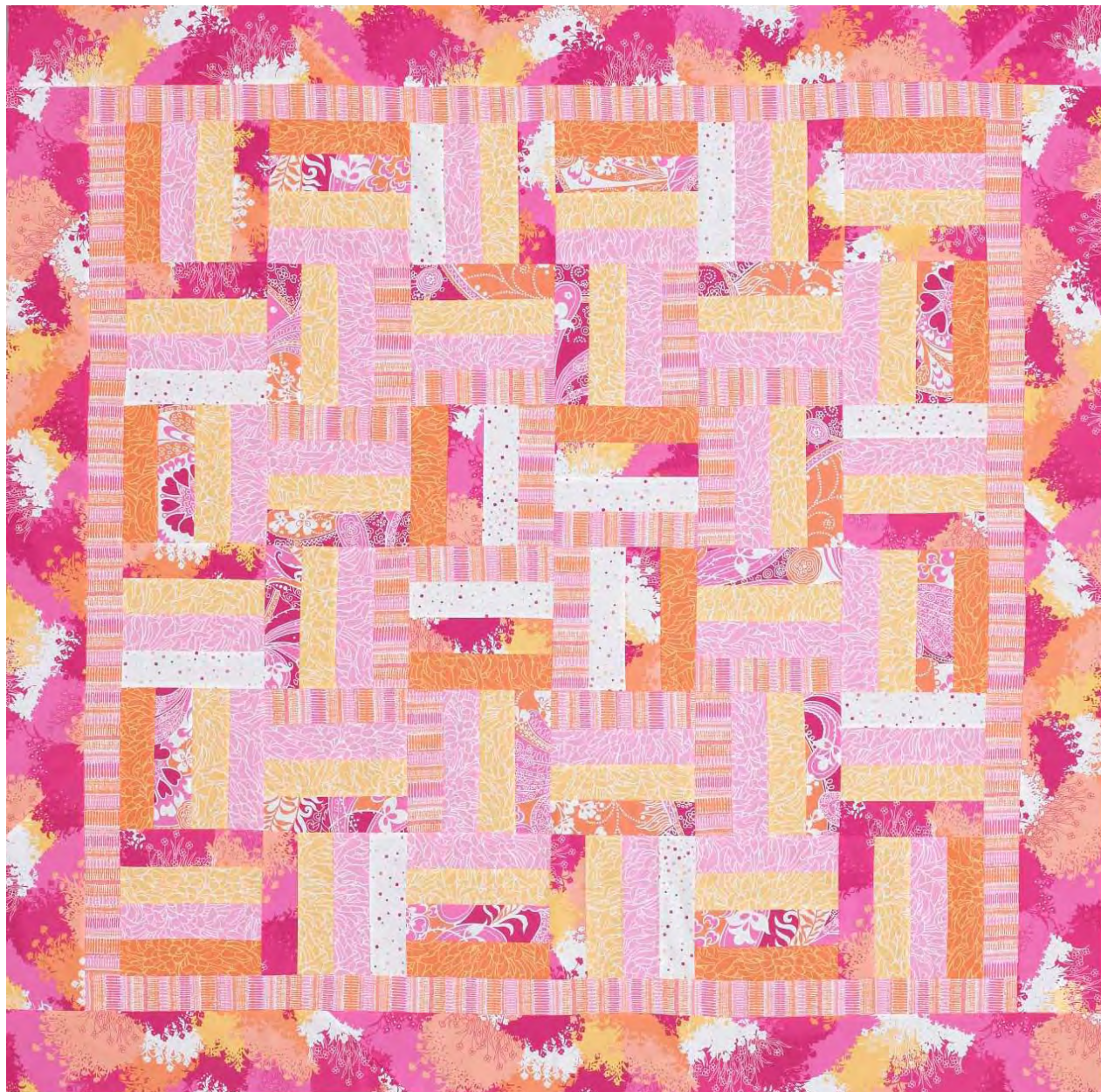


Project: Sherbet Rail Fence

INSPIRED BY "CRÈME BRULÉE" FROM DESIGNER GERRI ROBINSON OF PLANTED SEED DESIGNS
QUILTMAKER: MARY PEPPER



Project: Sherbet Rail Fence

Make a cheerful summer throw of cleverly arranged Rail Fence blocks. Cheerful sherbet-tone prints from the Strawberry Field collection by Alice Kennedy for Timeless Treasures liven up this traditional, easy-to-piece pattern.

Materials

- 1¾ yards pink-and-orange print (blocks, outer border, binding)
- ¾ yard pink-and-orange stripe (inner border, blocks)
- ⅝ yard pink-and-white print fabric (blocks)
- ⅝ yard yellow-and-white print fabric (blocks)
- ½ yard pink paisley (blocks)
- ⅓ yard orange-and-white print (blocks)
- ¼ yard white polka dot (blocks)
- 3⅞ yards backing fabric
- 68" square batting

Finished quilt: 61½" square

Finished block: 8" square

Quantities are for 44/45"-wide, 100% cotton fabrics.

Measurements include ¼" seam allowances. Sew with right sides together unless otherwise stated.

Cut Fabrics

Cut pieces in the following order.

From pink-and-orange print, cut:

- 6—5×42" strips for outer border
- 7—2½×42" binding strips
- 17—2½×8½" rectangles

From pink-and-orange stripe, cut:

- 6—2½×42" strips for inner border
- 16—2½×8½" rectangles

From pink-and-white print, cut:

- 32—2½×8½" rectangles

From yellow-and-white print, cut:

- 32—2½×8½" rectangles

From pink paisley, cut:

- 19—2½×8½" rectangles

From orange-and-white print, cut:

- 16—2½×8½" rectangles

From white polka dot, cut:

- 12—2½×8½" rectangles

Assemble Blocks

Referring to **Block Assembly Diagram**, join four assorted print 2½×8½" rectangles to make a block. Press seams in one direction. The block should be 8½" square including seam allowances. Repeat to make 36 blocks total.

Assemble Quilt Center

1. Referring to **Quilt Assembly Diagram**, lay out blocks in six rows, rotating blocks as shown.
2. Sew together blocks in each row. Press seams in one direction, alternating direction with each row.
3. Join rows to make quilt center; press seams in one direction. The quilt center should be 48½" square including seam allowances.

Add Borders

1. Cut and piece pink-and-orange stripe 2½×42" strips to make:
 - 2—2½×52½" inner border strips
 - 2—2½×48½" inner border strips
2. Sew short inner border strips to opposite edges of quilt center. Add long inner border strips to remaining edges. Press all seams toward inner border.

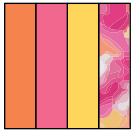
3. Cut and piece pink-and-orange print 5×42" strips to make:
 - 2—5×61½" outer border strips
 - 2—5×52½" outer border strips

4. Sew short outer border strips to opposite edges of quilt center. Add long outer border strips to remaining edges to complete quilt top. Press all seams toward outer border.

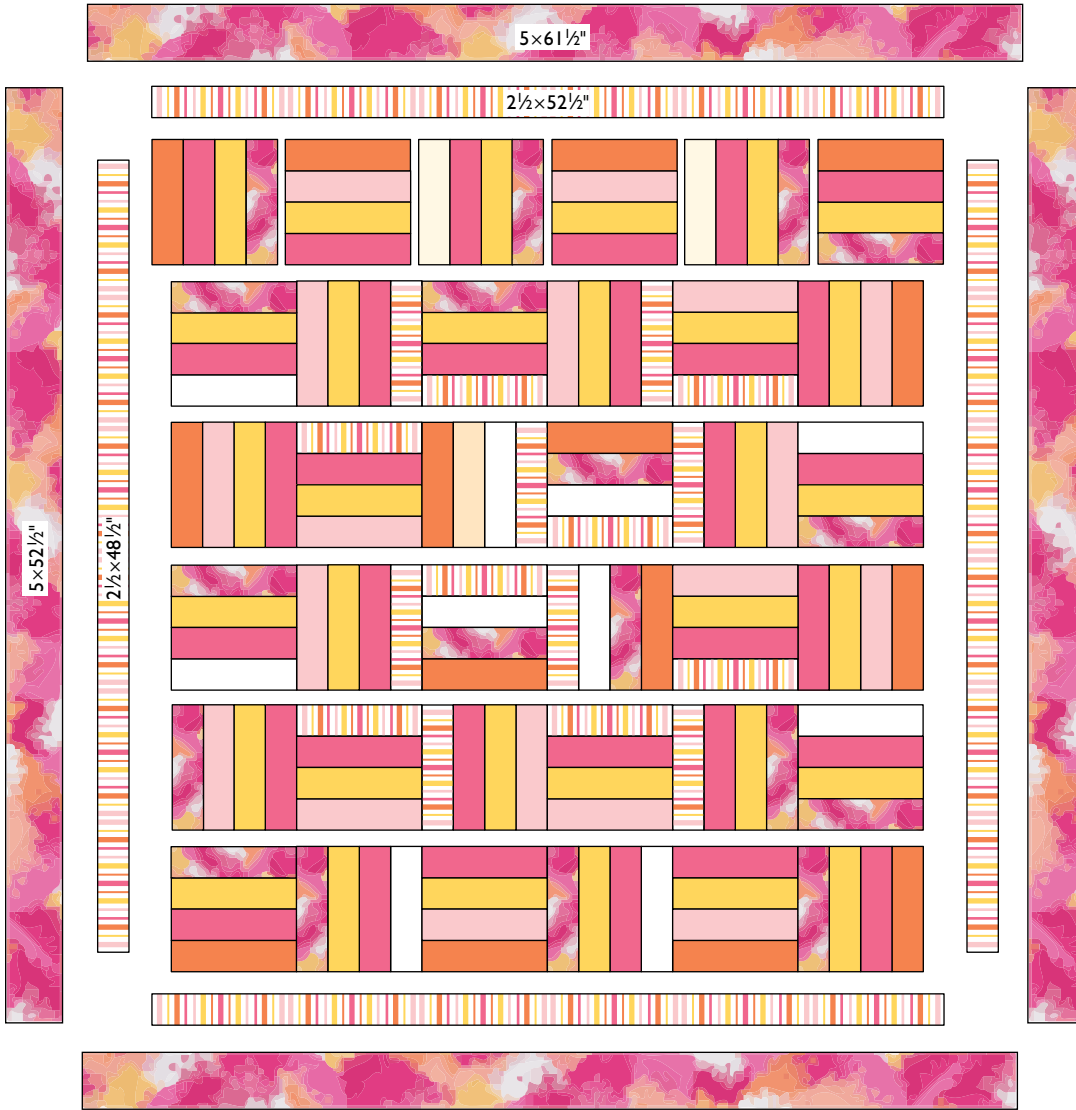
Finish Quilt

1. Layer quilt top, batting, and backing; baste.
2. Quilt as desired.
3. Bind with pink-and-orange print binding strips.

Project: Sherbet Rail Fence



BLOCK ASSEMBLY DIAGRAM



QUILT ASSEMBLY DIAGRAM