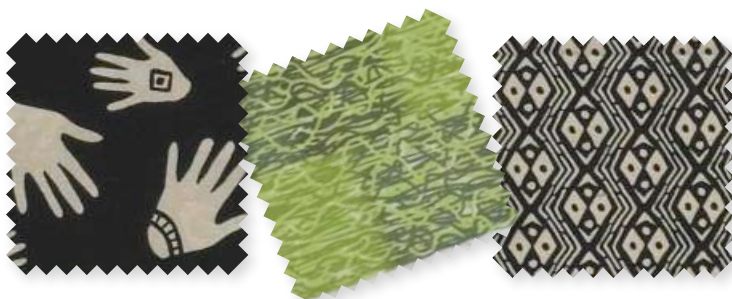


Project: African Inspired

INSPIRED BY "TWO OF A KIND" BY DESIGNER RACHEL SHELBURNE AND QUILTMAKER DARLENE ZIMMERMAN



Fabrics are from Drums of Afrika by Sonie Ruffin, and Paint Box I and Paint Box II by Lonni Rossi, all from Andover Fabrics.

Project: African Inspired

Using the same pattern reminiscent of a Card Trick block, combine ethnic prints, geometrics, and splashes of color to make this graphic throw.

plan the quilt

To ensure that all the pieces are placed in the correct position, arrange the pieces on a design wall before you sew. As you assemble each row in the step-by-step instructions that follow, take down only the pieces in that row, sew them together, then return the row to the design wall. Once each row is assembled, it will be easy to complete the quilt center.

materials

- $\frac{3}{4}$ yard total assorted light to medium prints in green, yellow, orange, turquoise, and purple (quilt center)
- $\frac{1}{2}$ yard total assorted black-and-cream geometrics (quilt center)
- 1 yard solid black (quilt center)
- $\frac{1}{4}$ yard rust print (inner border)
- $2\frac{5}{8}$ yards black-and-cream African print (outer border, binding)
- $\frac{1}{4}$ yard black-and-cream hand print (border squares)
- $1\frac{1}{2}$ yards backing fabric
- 46x53" batting

Finished quilt: 39 $\frac{1}{2}$ x46 $\frac{1}{2}$ "

Quantities are for 44/45"-wide, 100% cotton fabrics.

Measurements include $\frac{1}{4}$ " seam allowances. Sew with right sides together unless otherwise stated.

cut fabrics

Cut pieces in the following order. Cut border and binding strips lengthwise (parallel to selvage).

From assorted light to medium prints, cut:

- 3—5 $\frac{1}{2}$ " squares
- 20—3x5 $\frac{1}{2}$ " rectangles
- 20—3" squares

From assorted black-and-cream geometrics, cut:

- 2—5 $\frac{1}{2}$ " squares
- 10—3x5 $\frac{1}{2}$ " rectangles
- 10—3" squares

From solid black, cut:

- 2—8 $\frac{3}{8}$ " squares, cutting each diagonally twice in an X for 8 large setting triangles total
- 3—4 $\frac{7}{8}$ " squares, cutting each diagonally twice in an X for 12 small setting triangles total
- 2—4 $\frac{1}{2}$ " squares, cutting each in half diagonally for 4 corner triangles total
- 24—3" squares

From rust print, cut:

- 2—1 $\frac{1}{4}$ x35" inner border strips
- 2—1 $\frac{1}{4}$ x29 $\frac{1}{2}$ " inner border strips

From black-and-cream

African print, cut:

- 2—5 $\frac{1}{2}$ x36 $\frac{1}{2}$ " outer border strips
- 2—5 $\frac{1}{2}$ x29 $\frac{1}{2}$ " outer border strips
- 5—2 $\frac{1}{2}$ x42 $\frac{1}{2}$ " binding strips

From black-and-cream, hand print, cut:

- 4—5 $\frac{1}{2}$ " squares

assemble rows

1. Referring to **Quilt Assembly Diagram**, lay out assorted light to medium print 5 $\frac{1}{2}$ " squares, assorted black-and-cream geometric 5 $\frac{1}{2}$ " squares, the 3" squares and 3x5 $\frac{1}{2}$ " rectangles, and the solid black 3" squares and setting and corner triangles in diagonal rows on a design wall.
2. Referring to **Diagram 1**, sew a short edge of a solid black small setting triangle to a 3" square. Press open attached triangle. Sew a short edge of a second solid black small setting triangle to adjacent edge of square to make a Unit A. Press open attached triangle. Repeat to make three total of Unit A.
3. Referring to **Diagram 2**, sew a short edge of a Unit A to an assorted 5 $\frac{1}{2}$ " square. Press seam toward 5 $\frac{1}{2}$ " square. Sew a short edge of a solid black large setting triangle to opposite edge of square to make Row 1. Press seam toward 5 $\frac{1}{2}$ " square.
4. Referring to **Quilt Assembly Diagram and Diagram 3**, sew together two 3" squares, two 3x5 $\frac{1}{2}$ " rectangles, and two solid black 3" squares in two rows. Press seams in opposite directions. Join rows to make Unit B. Press seam in one direction.
5. Referring to **Diagram 4**, sew together units A and B, a 5 $\frac{1}{2}$ " square, and a solid black large setting triangle to make Row 2. Press seams in opposite direction than in Row 1.
6. Referring to **Quilt Assembly Diagram** for placement, sew together a Unit A, two B units, a 5 $\frac{1}{2}$ " square, and a solid black large setting triangle to make row 3. Press seams in one direction.
7. Sew together three B units, a 5 $\frac{1}{2}$ " square, and a solid black large setting triangle to make Row 4 (**Quilt Assembly Diagram**). Press seams in one direction.

Project: African Inspired

8. Sew together a solid black large setting triangle, three B units, and $5\frac{1}{2}$ " square to make Row 5 (Quilt Assembly Diagram). Press seams in one direction.

9. Referring to Diagram 5, sew together two solid black small setting triangles, two $3 \times 5\frac{1}{2}$ " rectangles, and a 3" square in two vertical rows. Press seams in one direction. Join rows to make Unit C; press seam in one direction. Repeat to make three total of Unit C for rows 6 through 8.

10. Referring to Quilt Assembly Diagram, sew together a solid black large setting triangle, two B units, and one Unit C to make Row 6. Press seams in one direction.

11. Sew together solid black large setting triangle, a Unit B, and a Unit C to make row 7. Press seams in one direction.

12. Sew together a solid black large setting triangle and a Unit C to make Row 8 (Quilt Assembly Diagram). Press seam in one direction.

assemble quilt top

1. Referring to Quilt Assembly Diagram, sew together rows 1 and 2. Press seam open.

2. Join Row 3 to Step 1 piece. Continue adding rows 4 through 8 in numerical order. Press all seams open.

3. Sew solid black corner triangles to each corner to make quilt center. Press seams toward center. The quilt center should be 28×35 " including seam allowances.

4. Sew long rust print inner border strips to long edges of quilt center. Add short rust print strips to remaining edges. Press all seams toward border.

5. Sew a black-and-cream hand print $5\frac{1}{2}$ " square to each end of a black-and-cream African print short outer border strip. Repeat to make a second short outer border strip. Press seams toward border.

6. Sew long outer border strips to long edges of quilt top. Sew short border units to remaining edges to complete quilt top. Press all seams toward border.

finish quilt

1. Layer quilt top, batting, and backing; baste.

2. Quilt as desired.

3. Bind with black-and-cream African print binding strips.



UNIT A

DIAGRAM 1

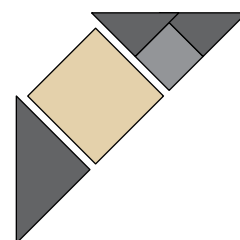
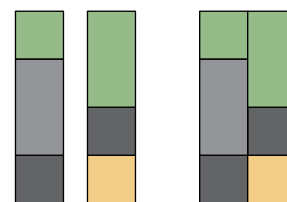


DIAGRAM 2



UNIT B

DIAGRAM 3

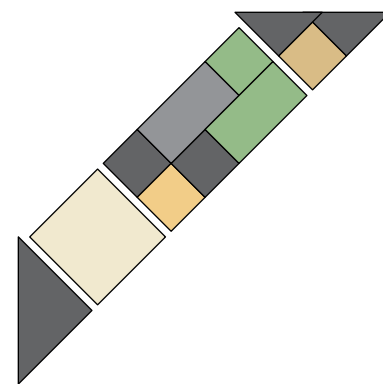
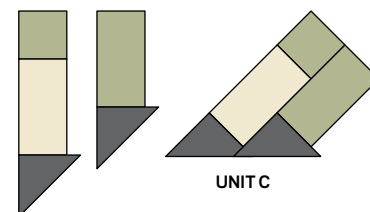


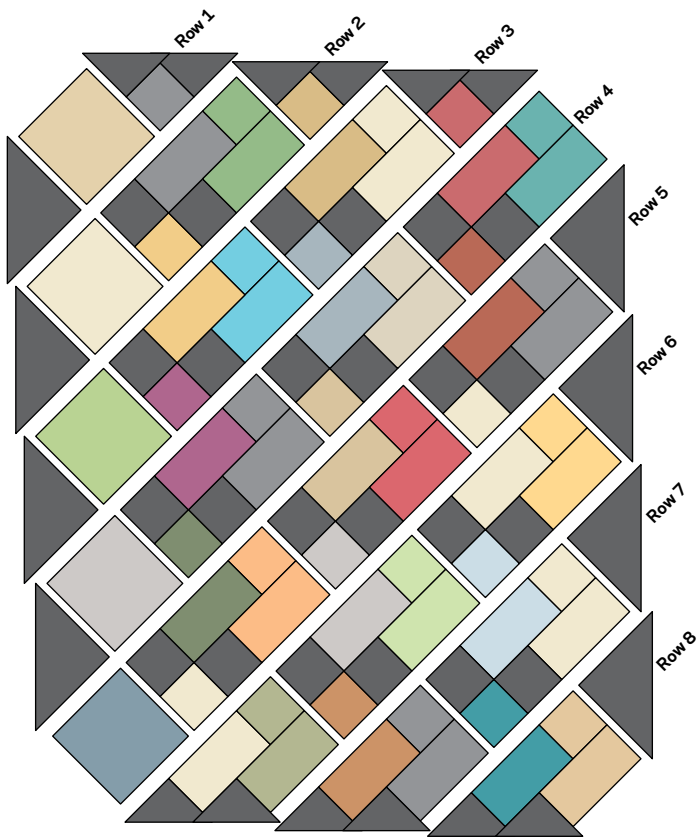
DIAGRAM 4



UNIT C

DIAGRAM 5

Project: African Inspired



QUILT ASSEMBLY DIAGRAM