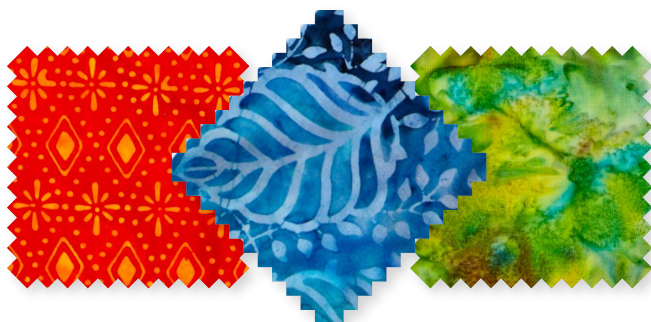


Project: Batik Patches Quilt

INSPIRED BY MOURNING GLORY FROM QUILT COLLECTOR MIRIAM KUJAC
QUILT TESTER: LAURA BOEHNKE



Combine dozens of batiks in a rainbow palette to create a scrappy lap-size quilt. The 25-Patch blocks feature randomly placed lights and darks while each Nine-Patch block uses just two batiks. Fabrics are from the Batik Paradise collection from Connecting Threads (connectingthreads.com).

Project: Batik Patches Quilt

Materials

- 1¾ yards total assorted light and dark batiks in yellow, tan, cream, blue, red, green, orange, black, and purple (blocks)
- 1¾ yards blue batik (sashing, border, binding)
- 27⁄8 yards backing fabric
- 50×64" batting

Finished quilt: 41¼×55¼"

Finished blocks: 25-Patch, 8¾" square; Nine-Patch, 5¼" square

Quantities are for 44/45"-wide, 100% cotton fabrics.

Measurements include ¼" seam allowances. Sew with right sides together unless otherwise stated.

Cut Fabrics

Cut pieces in the following order.

From assorted light and dark batiks, cut:

- 30—2¼" squares (6 sets of 5 matching squares) for Nine-Patch blocks
- 24—2¼" squares (6 sets of 4 matching squares) for Nine-Patch blocks
- 300—2¼" squares for 25-Patch blocks

From blue batik, cut:

- 17—5¾×9¼" sashing rectangles
- 10—2½×42" strips for border and binding

Assemble Blocks

1. Referring to **Diagram 1**, lay out one set of five matching batik 2¼" squares and one set of four matching batik 2¼" squares in three rows. Sew together squares in each row. Press seams in one direction, alternating direction with each row. Join rows to make a Nine-Patch block. Press seams in one direction. The block should be 5¾" square including seam allowances.
2. Repeat Step 1 to make six Nine-Patch blocks total.
3. Referring to **Diagram 2**, lay out 25 assorted light and dark batik 2¼" squares in five rows. Sew together squares in each row. Press seams in one direction, alternating direction with each row. Join rows to make a 25-Patch block. Press seams in one direction. The block should be 9¼" square including seam allowances.
4. Repeat Step 3 to make twelve 25-Patch blocks total.

Assemble Quilt Center

1. Referring to photo and **Quilt Assembly Diagram**, lay out Nine-Patch blocks, 25-Patch blocks, and blue batik sashing rectangles in seven horizontal rows. Sew together pieces in each row. Press seams toward sashing rectangles.
2. Join rows to make quilt center. Press seams in one direction. The quilt center should be 37¼×51¼" including seam allowances.

Add Border

1. Cut and piece blue batik 2½×42" strips to make:
 - 2—2½×51¼" border strips
 - 2—2½×41¼" border strips
2. Sew long border strips to long edges of quilt center. Add short border strips to remaining edges to complete quilt top. Press all seams toward border.

Finish Quilt

1. Layer quilt top, batting, and backing; baste. Quilt as desired.
2. Bind with remaining blue batik 2½×42" strips.

Project: Batik Patches Quilt

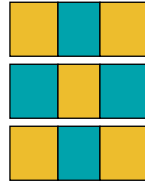


DIAGRAM 1

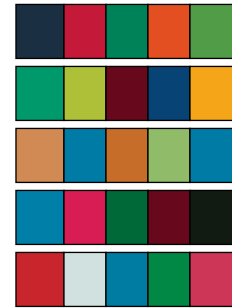
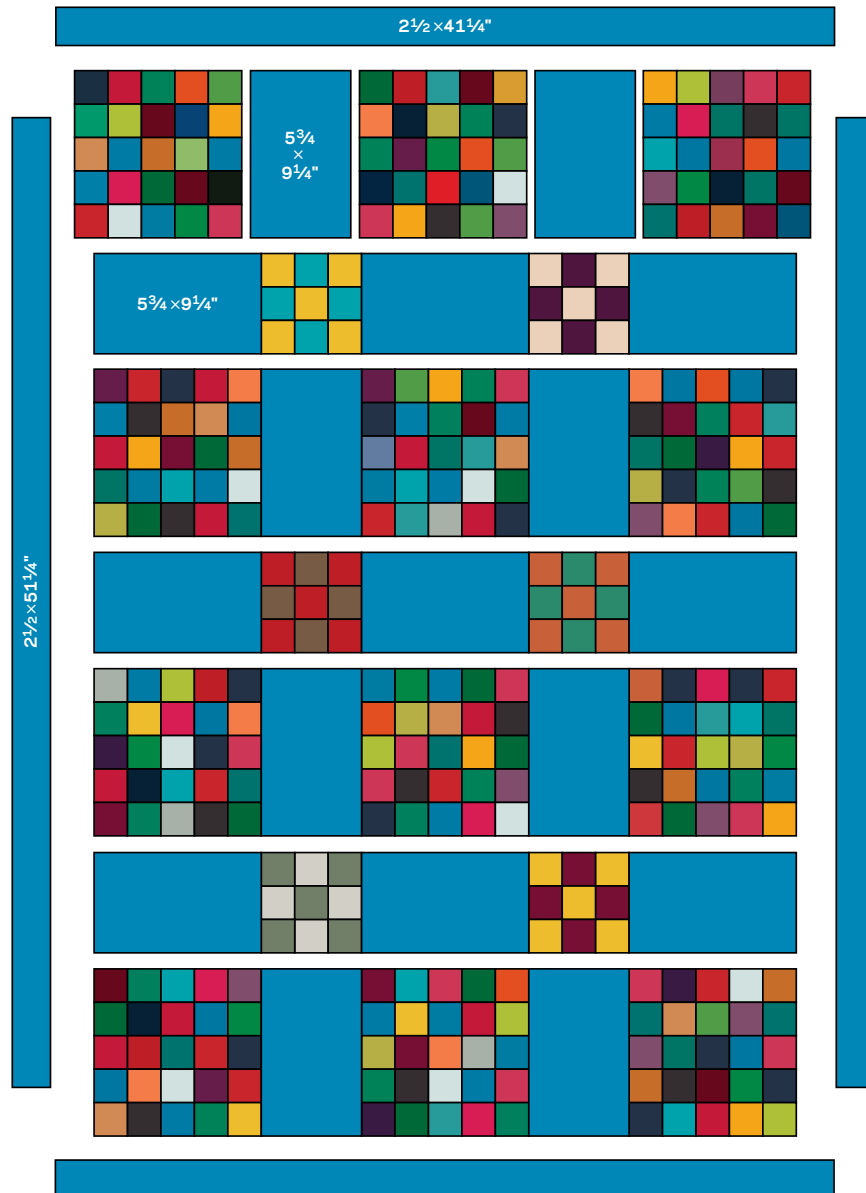


DIAGRAM 2



QUILT ASSEMBLY DIAGRAM