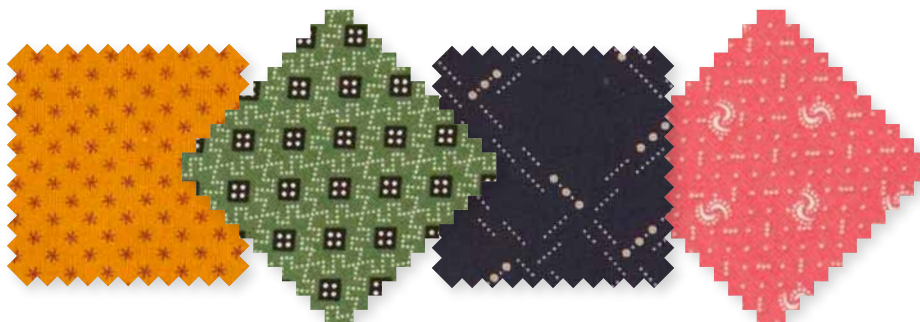


Project: Pixelated Diamond

INSPIRED BY COLOR ME CROCHET FROM DESIGNER LISSA ALEXANDER (MODALISSA.BLOGSPOT.COM)  
QUILT TESTER: LAURA BOEHNKE



FABRICS are from the Paula Barnes Companions collection from Marcus Fabrics (marcusfabrics.com).



Careful placement of scrappy blocks that are half dark prints, half light prints creates a large diamond shape. When you take a step back, the small squares in the diamond give it a pixelated look.

## Project: Pixelated Diamond

**Materials**

- 17 $\frac{1}{8}$  yards total assorted cream prints (blocks)
- 1 yard total assorted dark red prints (blocks)
- 17 $\frac{1}{8}$  yards total assorted medium and dark prints in green, rust, pink, blue, black, purple, and yellow (blocks)
- 7 $\frac{1}{8}$  yard black print (border, binding)
- 2 $\frac{2}{3}$  yards backing fabric
- 48×66" square batting

Finished quilt: 39 $\frac{1}{2}$ ×57 $\frac{1}{2}$ "

Finished block: 9" square

Yardages and cutting instructions are based on 42" of usable fabric width.

Measurements include  $\frac{1}{4}$ " seam allowances. Sew with right sides together unless otherwise stated.

**Cut Fabrics**

Cut pieces in the following order.

**From assorted cream prints, cut:**

- 24—2×12 $\frac{1}{2}$ " strips
- 24—2×10" strips
- 24—2×7 $\frac{1}{2}$ " strips
- 24—2×5" strips
- 24—2×2 $\frac{1}{2}$ " strips

**From assorted dark red prints, cut:**

- 24—2×15" strips

**From assorted medium and dark prints, cut:**

- 24—2×12 $\frac{1}{2}$ " strips
- 24—2×10" strips
- 24—2×7 $\frac{1}{2}$ " strips
- 24—2×5" strips
- 24—2×2 $\frac{1}{2}$ " strips

**From black print, cut:**

- 6—2 $\frac{1}{2}$ ×42" binding strips
- 6—2×42" strips for border

**Assemble A Strip Sets**

1. Referring to **Diagram 1**, sew together one of each length of assorted cream print 2"-wide strips to make Strip Set A. Press seams away from longest strip. Referring to **Diagram 2**, cut strip set into five 2"-wide A segments.
2. Repeat Step 1 to make 24 strip sets total, each cut into 2"-wide A segments.

**Assemble Blocks**

1. Referring to **Diagram 3**, join one dark red print 2×15" strip and one of each length of assorted medium and dark print 2"-wide strips to make Strip Set B. Press seams away from longest strip. Cut strip set into six 2"-wide B segments (**Diagram 4**). Move segments down to align bottom edges.
2. Gather one of each length of A segments, pulling from various strip sets to create a scrappy look. Referring to **Diagram 5**, lay out the A segments with the aligned B segments in six vertical rows.
3. Sew segments together by row. Join rows to make a block (**Diagram 6**). Press seams in one direction. The block should be 9 $\frac{1}{2}$ " square including seam allowances.
4. Repeat steps 1-3 to make 24 blocks total.

**Assemble Quilt Center**

1. Referring to **Quilt Assembly Diagram**, lay out blocks in six horizontal rows, rotating blocks as shown to create a diamond grid.
2. Sew together blocks in each row. Press seams in one direction, alternating direction with each row. Join rows to make quilt center. Press seams in one direction. The quilt center should be 36 $\frac{1}{2}$ ×54 $\frac{1}{2}$ " including seam allowances.

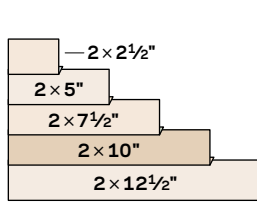
**Assemble And Add Borders**

1. Cut and piece black print 2×42" strips to make:
  - 2—2×54 $\frac{1}{2}$ " border strips
  - 2—2×39 $\frac{1}{2}$ " border strips
2. Sew long border strips to long edges of quilt center. Add short border strips to remaining edges to complete quilt. Press all seams toward border.

**Finish Quilt**

1. Layer quilt top, batting, and backing; baste. Quilt as desired.
2. Bind with black print binding strips.

## Project: Pixelated Diamond



Strip Set A  
DIAGRAM 1

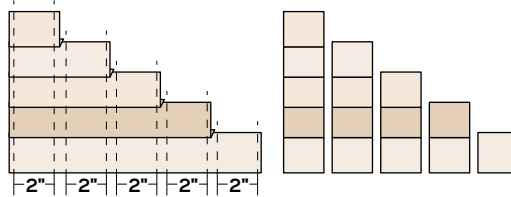
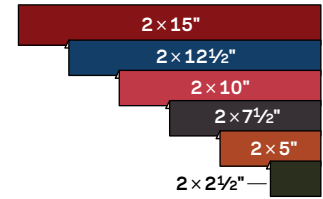


DIAGRAM 2



Strip Set B  
DIAGRAM 3

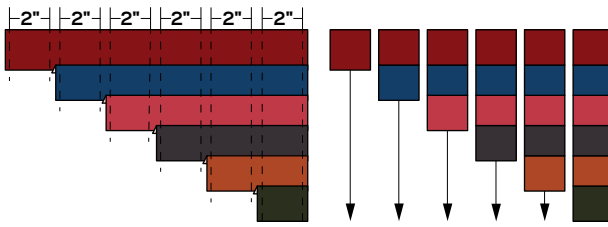


DIAGRAM 4

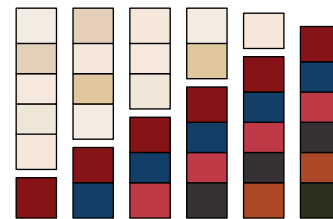


DIAGRAM 5

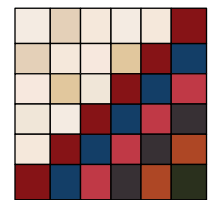
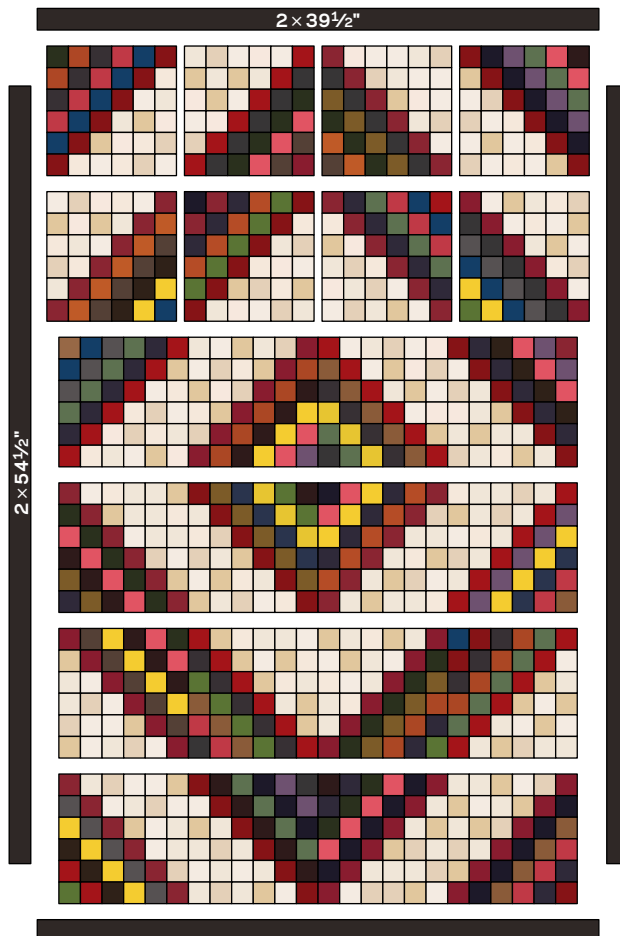


DIAGRAM 6



QUILT ASSEMBLY DIAGRAM