

Project: Twice Is Nice Pillow

FROM DESIGNER AVIS SHIRER OF JOINED AT THE HIP (JOINEDATTHEHIP.COM)



A pair of pillow toppers helps you make the shift from one holiday to the next.

Project: Twice Is Nice Pillow

Materials For Two Pillow Toppers

- ½ yard blue print (appliqué foundations)
- ⅓ yard solid black (appliqués)
- Scraps of yellow and off-white felted wool (appliqués)
- Scraps of pink print, orange plaid, gold plaid, yellow check, dark brown print, rust print, brown plaid, mottled gold, and yellow print (appliqués)
- ¼ yard mottled brown (turkey appliqué)
- ⅜ yard blue plaid (binding, ties)
- 2—15" squares backing fabric
- 2—15" squares batting
- 2—⅛"-diameter black beads
- Lightweight fusible web
- Purchased 18"-square pillow

Finished quilts: 12½" square

Unless otherwise specified, quantities are for 44/45"-wide, 100% cotton fabrics. All measurements include a ¼" seam allowance. Sew with right sides together unless otherwise stated.

Cut Fabrics

To make the best use of your fabrics, cut pieces in the following order.

Patterns are on pages 4-8. To use fusible web for appliquéing, complete the following steps.

1. Lay fusible web, paper side up, over patterns. Use a pencil to trace each pattern the number of times indicated in cutting instructions, leaving ½" between tracings. Cut out each fusible-web shape roughly ¼" outside the traced lines.
2. Following the manufacturer's instructions, press fusible-web shapes onto backs of designated fabrics; let cool. Cut out fabric shapes on drawn lines and peel off paper backings.

From blue print, cut:

- 2—12½" squares

From solid black, cut:

- 1 each of patterns A and B
- 2 of Pattern D

From yellow wool, cut:

- 2 of Pattern C

From off-white wool, cut:

- 2—¼×3" strips

From pink print, cut:

- 1 of Pattern E

From orange plaid, cut:

- 2 of letter O
- 1 each of letter B and patterns F, G, and W

From gold plaid, cut:

- 1 of Pattern H

From yellow check, cut:

- 1 of Pattern I

From dark brown print, cut:

- 1 each of patterns K, L, M, N, and O

From rust print, cut:

- 1 each of patterns P, Q, R, S, and T

From brown plaid, cut:

- 1 of Pattern U

From mottled gold, cut:

- 1 of Pattern V

From yellow print, cut:

- 1 of Pattern X

From mottled brown, cut:

- 1 of Pattern J

From blue plaid, cut:

- 3—2½×42" binding strips
- 2—1½×42" strips

Appliqué Cat Block

1. Referring to Cat Appliqué Placement Diagram, lay out pieces A-D, orange plaid letters, and pieces F-I on a blue print 12½" square; fuse in place.
2. Using threads that match the appliqué pieces and working from the bottom layer to the top, machine-blanket-stitch around each piece.

3. Arrange two off-white wool ¼×3" strips in an X on the cat's face to make whiskers. Center pink print E nose on top of the strips; fuse in place. With pink thread, machine-blanket-stitch around the nose, leaving whisker ends loose, to complete the cat block.

Appliqué Turkey Block

1. Following the manufacturer's instructions, press a fusible-web 3" square onto the back of a solid black scrap; let cool. Cut the fused square into two ¼×2" strips and four ¼×1" strips; peel off paper backings.
2. Referring to Turkey Appliqué Placement Diagram, lay out pieces J-X and the fused black print strips on the remaining blue print 12½" square. Fuse all pieces in place.
3. Using threads that match the appliqué pieces and working from the bottom layer to the top, machine-blanket-stitch around each piece.
4. Referring to patterns W and X, machine-straight-stitch the veins on each leaf to complete the turkey block.

Finish Quilts

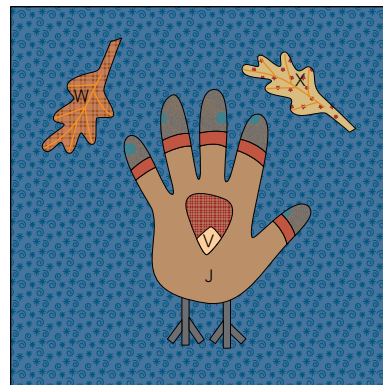
1. Layer each appliquéd block with batting and backing 15" squares.
2. Quilt as desired. In each background, Avis machine-quilted an all-over stipple.
3. Use black thread to hand-sew black beads on the turkey for eyes.

Project: Twice Is Nice Pillow

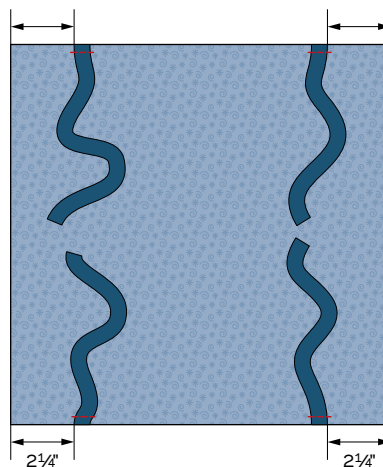
4. With right sides inside, fold each blue plaid $1\frac{1}{2} \times 42$ " strip in half lengthwise; sew together long edges. Cut each strip into four $10\frac{1}{2}$ "-long pieces for eight ties total. Turn ties right sides out; press.
5. On back of each quilted block, sew ends of two ties along top and bottom edges according to Tie Placement Diagram. Tie raw end of each tie in an overhand knot.
6. Bind quilted blocks with blue plaid $2\frac{1}{2} \times 42$ " strips. Place mini quilt on each side of 18" pillow and tie the ties together in bows.



CAT APPLIQUÉ PLACEMENT DIAGRAM

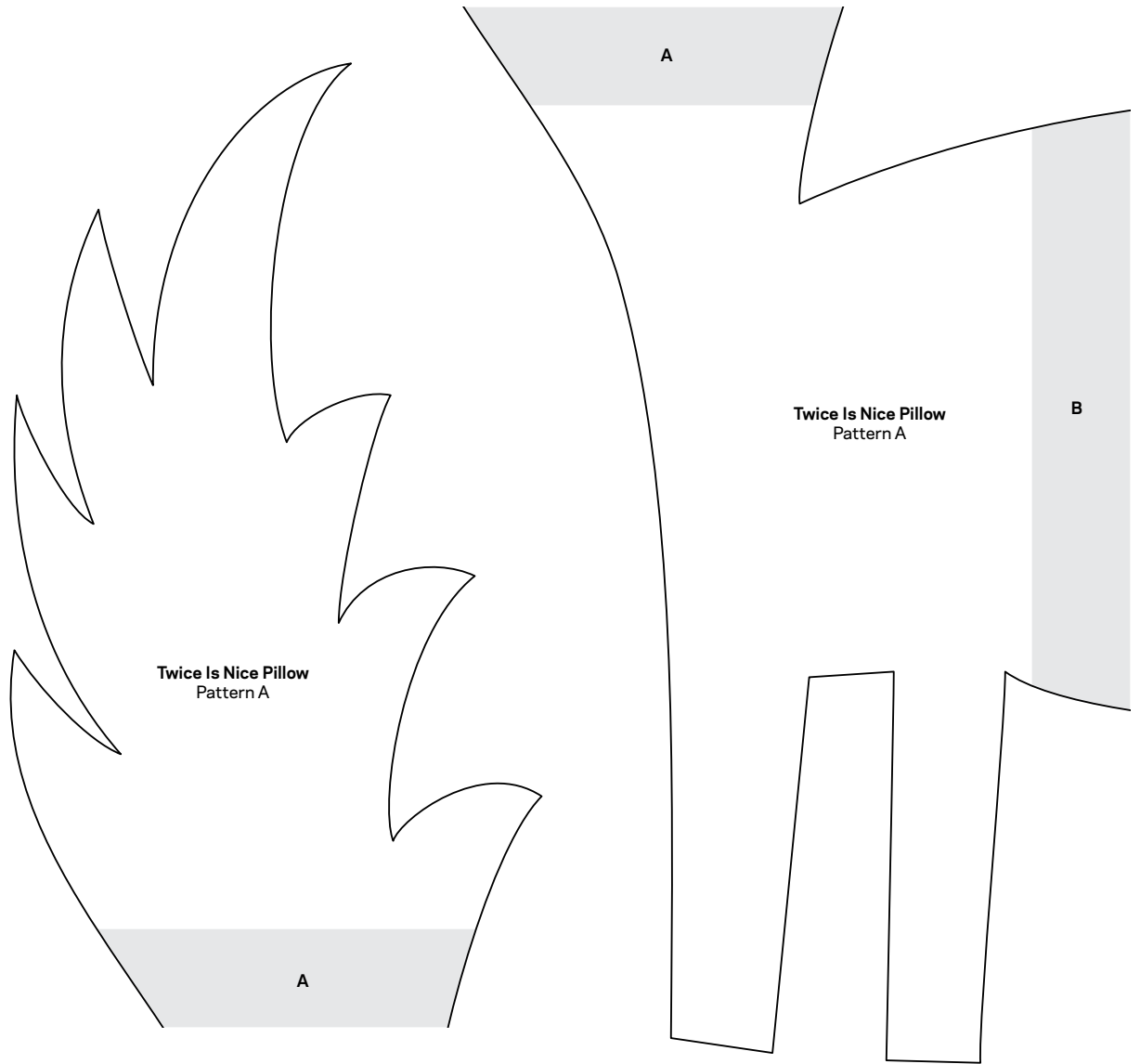


TURKEY APPLIQUÉ PLACEMENT DIAGRAM



TIE PLACEMENT DIAGRAM

Project: Twice Is Nice Pillow



To make an entire pattern, cut out partial patterns on outside lines and tape together, overlapping shaded areas.

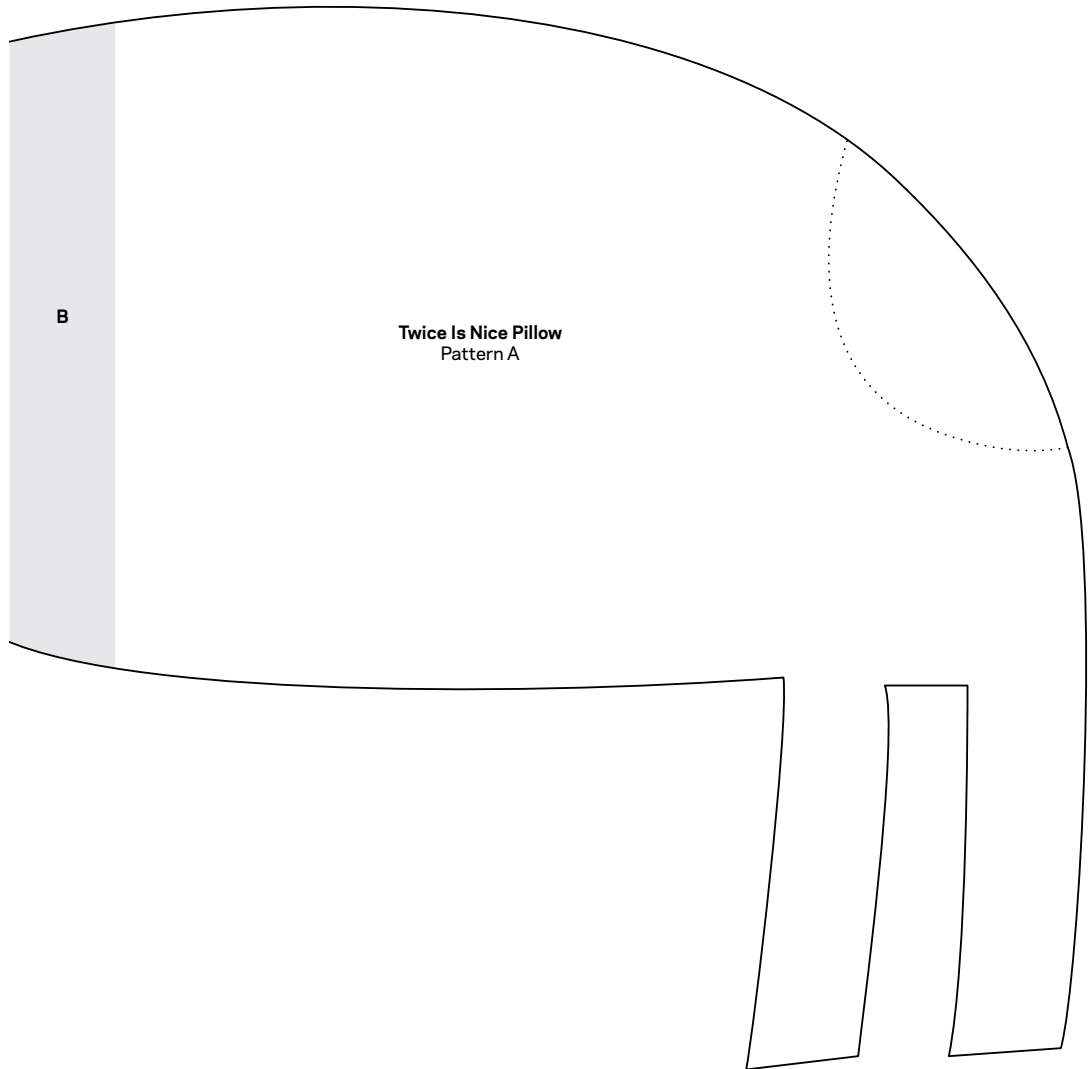
This box should measure 1".



*** NOTE:**

When printing a downloadable pdf, set Page Scaling preference to NONE to print patterns at 100%. Do NOT "Shrink to Fit" or "Fit to Printable Area."

Project: Twice Is Nice Pillow



To make an entire pattern, cut out partial patterns on outside lines and tape together, overlapping shaded areas.

This box should measure 1".



*** NOTE:**

When printing a downloadable pdf, set Page Scaling preference to NONE to print patterns at 100%. Do NOT "Shrink to Fit" or "Fit to Printable Area."

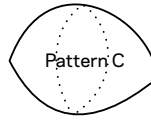
Project: Twice Is Nice Pillow



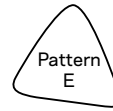
Twice Is Nice Pillow
Pattern B



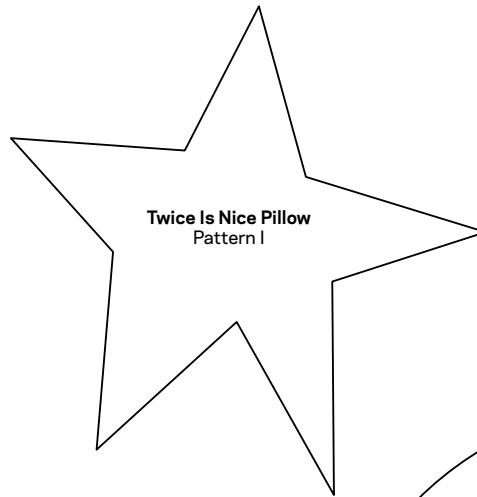
Pattern D



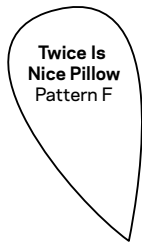
Pattern C



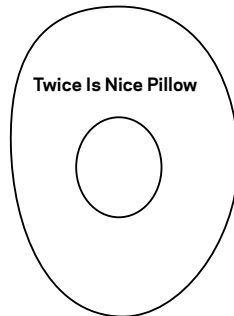
Pattern E



Twice Is Nice Pillow
Pattern I



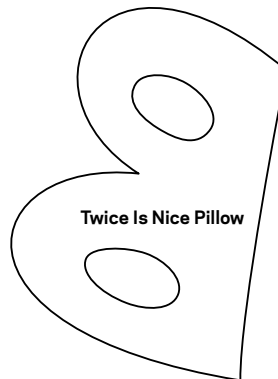
Twice Is Nice Pillow
Pattern F



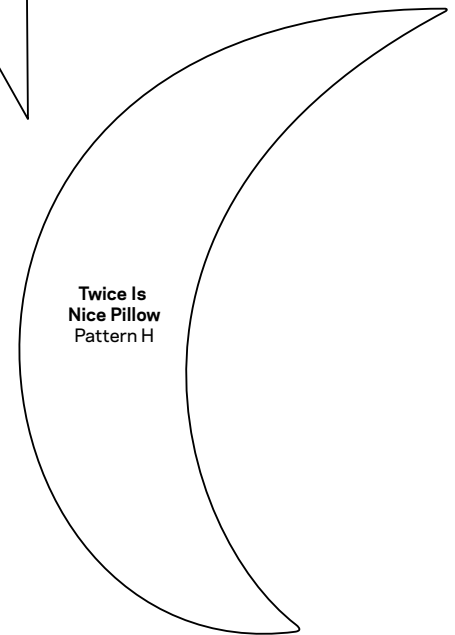
Twice Is Nice Pillow



Pattern G



Twice Is Nice Pillow



Twice Is Nice Pillow
Pattern H

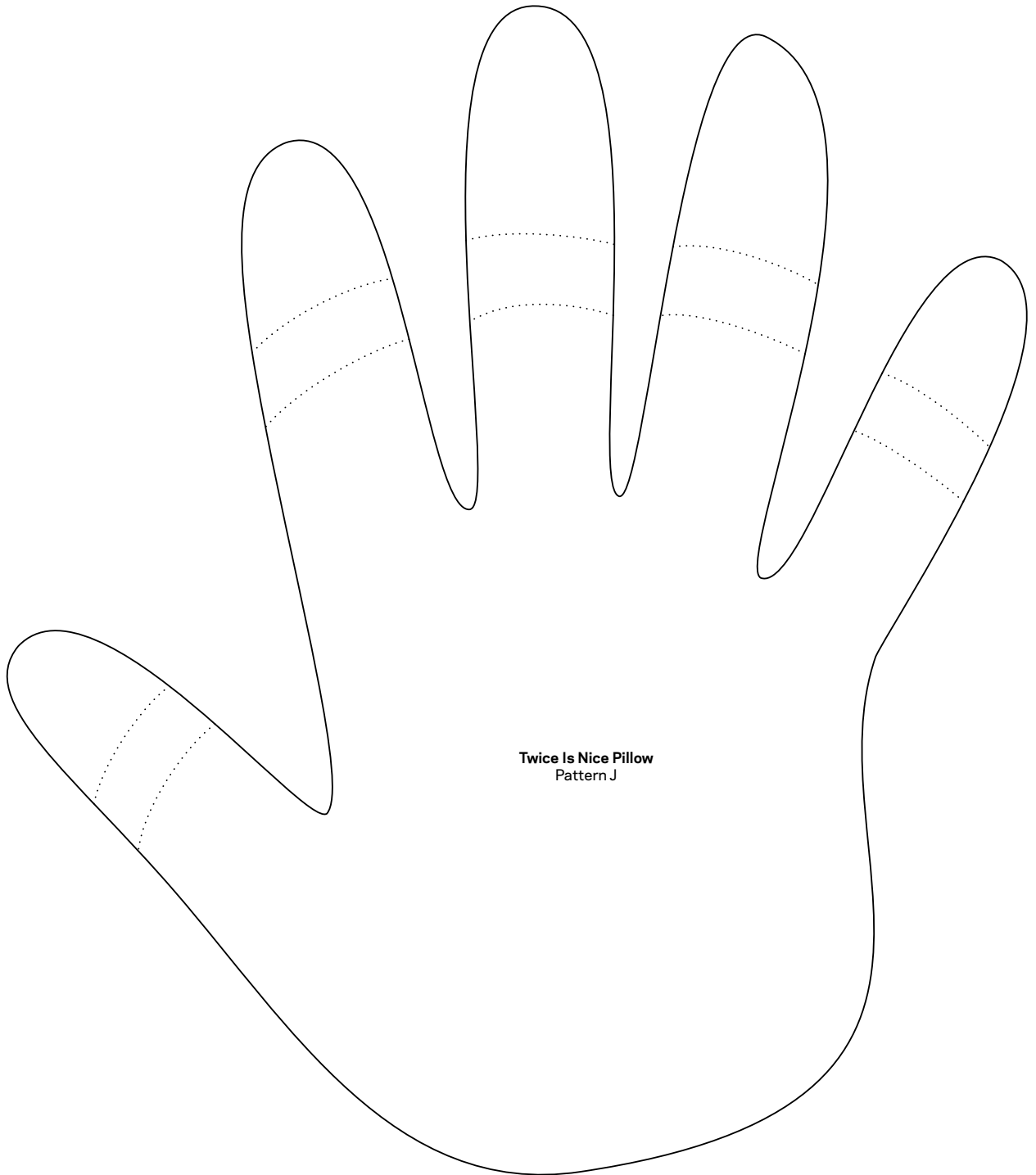
This box should
measure 1".

← 1" →

*** NOTE:**

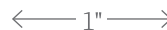
When printing a downloadable pdf, set Page Scaling preference to NONE to print patterns at 100%. Do NOT "Shrink to Fit" or "Fit to Printable Area."

Project: Twice Is Nice Pillow



Twice Is Nice Pillow
Pattern J

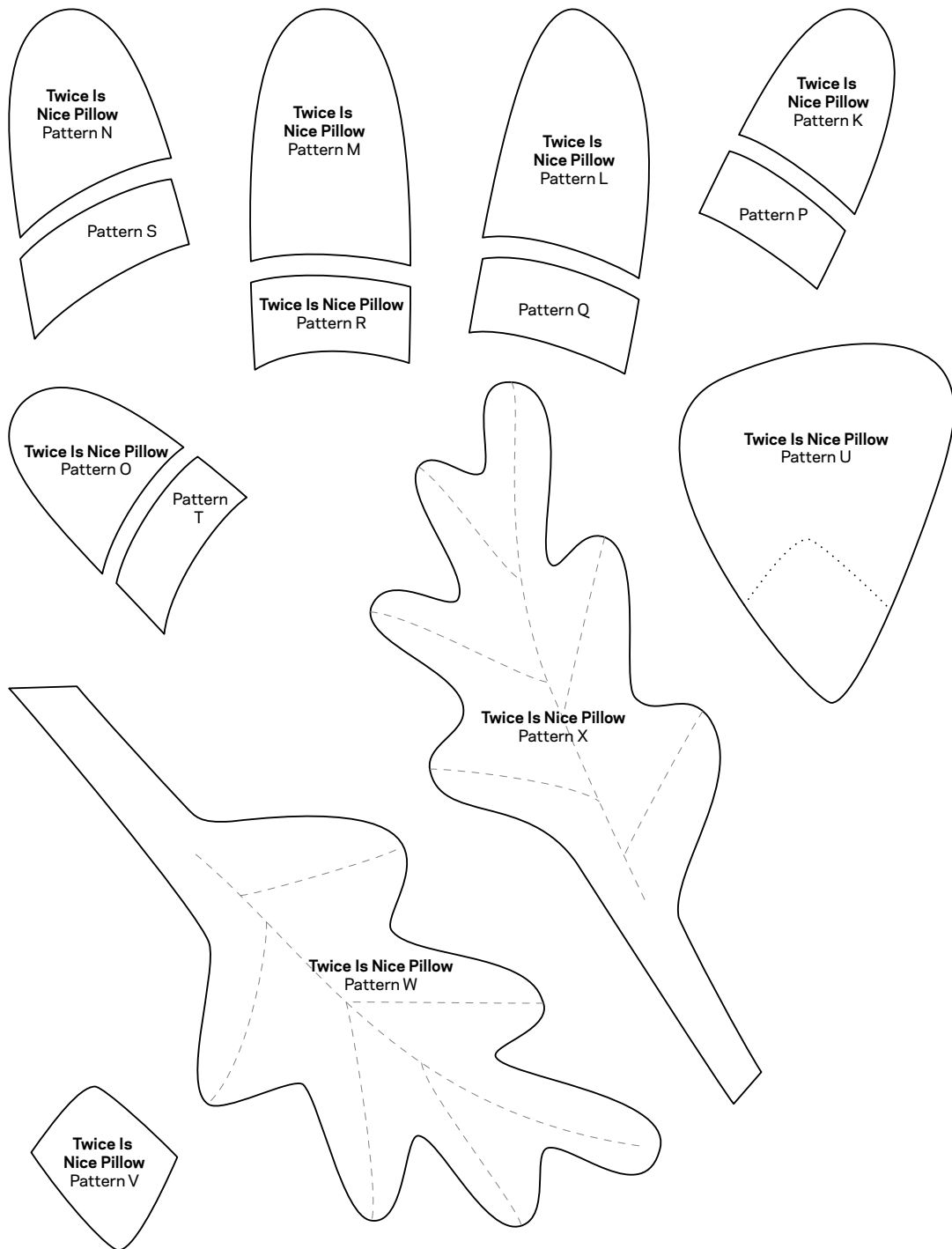
This box should
measure 1".



*** NOTE:**

When printing a downloadable pdf, set Page Scaling preference to NONE to print patterns at 100%. Do NOT "Shrink to Fit" or "Fit to Printable Area."

Project: Twice Is Nice Pillow



This box should measure 1".

← 1" →

*** NOTE:**

When printing a downloadable pdf, set Page Scaling preference to NONE to print patterns at 100%. Do NOT "Shrink to Fit" or "Fit to Printable Area."