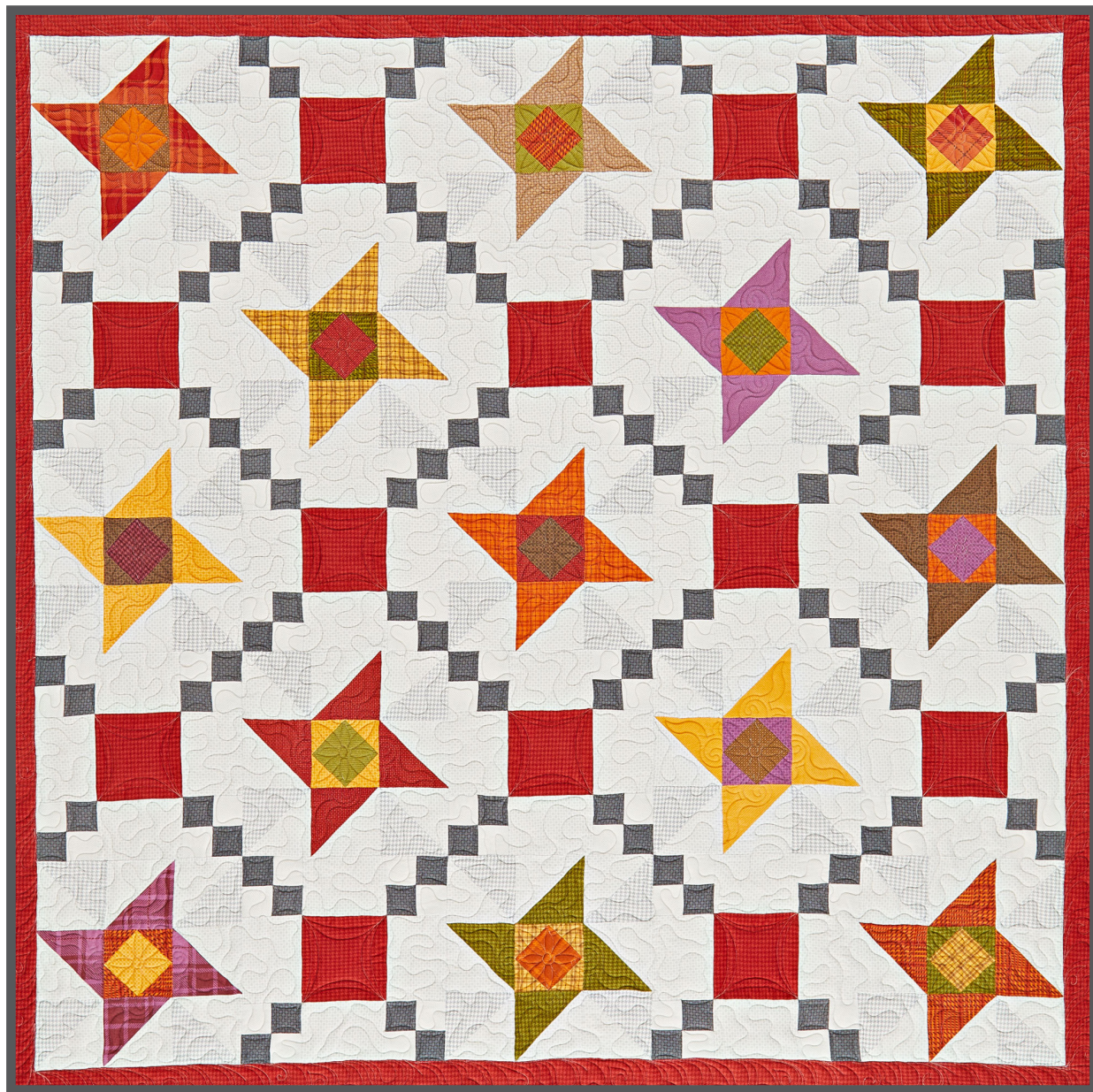


**PROJECT: Warm Welcome**

Assorted plaid and check flannels come together to create a cozy two-block throw.

**INSPIRED BY:** *Splash of Color* from designer Charisma Horton ([charismascorner.com](http://charismascorner.com))

**QUILT TESTER:** Diane Tomlinson



**FABRICS** are from the Autumn Gatherings Flannels collection by Primitive Gatherings for Moda Fabrics ([modafabrics.com](http://modafabrics.com)).

**FINISHED QUILT:** 64½" square  
**FINISHED BLOCKS:** 12" square

### MATERIALS

Yardages and cutting instructions are based on 42" of usable fabric width.

- 2¼ yards white print (A and B blocks)
- ¾ yard gray print (A blocks)
- 1⅓ yard total assorted prints in red, orange, yellow, green, purple, and brown (A blocks)
- 1 yard *each* black print and red plaid (B blocks, borders, binding)
- 4⅞ yards backing fabric
- 73"-square batting

### CUT FABRICS

Cut pieces in the following order.

If you prefer to make triangle-squares larger than necessary and trim them to size, cut 5" squares instead of the 4⅞" squares specified here.

#### From white print, cut:

- 6–2¼×42" strips
- 52–4⅞" squares
- 48–4×5½" rectangles

#### From gray print, cut:

- 26–4⅞" squares

#### From assorted prints, cut:

- 26–4⅞" squares (13 matching sets of two squares)
- 13–3⅜" squares
- 26–2⅞" squares, cutting each in half diagonally for 52 triangles total (13 sets of four matching triangles)

#### From black print, cut:

- 7–2½×42" binding strips
- 6–2¼×42" strips

#### From red plaid, cut:

- 7–2½×42" strips for border
- 12–5½" squares

### ASSEMBLE A BLOCKS

Measurements include ¼" seam allowances. Sew with right sides together unless otherwise stated.

Press seams in directions indicated by arrows on diagrams. If no direction is specified, press seam toward darker fabric.

**1** Use a pencil to mark a diagonal line on wrong side of each white print 4⅞" square.

**2** Layer a marked white print square atop a gray print 4⅞" square. Sew together with two seams, stitching ¼" on each side of marked line (**Diagram 1**). Cut apart on marked line. Press open to make two gray triangle-squares. Each triangle-square should be 4½" square including seam allowances. Repeat to make 52 gray triangle-squares total.

**3** Using remaining marked white print squares and assorted print 4⅞" squares, repeat Step 2 to make 52 triangle-squares (13 matching sets of four triangle-squares).

**4** Gather one set of four matching print triangles and one nonmatching print 3⅜" square. Referring to **Diagram 2**, sew triangles to opposite edges of square. Add remaining triangles to remaining edges of square to make a Square-in-a-Square unit. The unit should be 4½" square including seam allowances. Repeat to make 13 Square-in-a-Square units total.

**5** Referring to **Diagram 3**, for triangle-square orientation, lay out in three rows four gray triangle-squares, four matching assorted print triangle-squares, and one Square-in-a-Square unit in a contrasting color. Sew together pieces in rows. Join rows to make a Block A. The block should be 12½" square including seam allowances. Repeat to make 13 A blocks total.

### ASSEMBLE B BLOCKS

**1** Sew together a black print 2¼×42" strip and a white print 2¼×42" strip to make a strip set (**Diagram 4**). Repeat to make six strip sets total. Cut strip sets into ninety-six 2¼"-wide segments.

**2** Sew together two 2¼"-wide segments to make a Four-Patch unit (**Diagram 5**). The unit should be 4" square including seam allowances. Repeat to make 48 Four-Patch units total.

**3** Referring to **Diagram 6**, lay out four Four-Patch units, four white print 4×5½" rectangles, and one red plaid 5½" square in three rows. Sew together pieces in rows. Join rows to make Block B. The block should be 12½" square including seam allowances. Repeat to make 12 B blocks total.

### ASSEMBLE QUILT TOP

**1** Referring to **Quilt Assembly Diagram**, alternate blocks in five rows. Sew together blocks in rows. Press seams toward B blocks. Join rows to make quilt center. Press seams in one direction. The quilt center should be 60½" square including seam allowances.

**2** Piece and cut red plaid 2½×42" strips to make:

- 2–2½×64½" border strips
- 2–2½×60½" border strips

**3** Sew short outer border strips to opposite edges of quilt center. Add long outer border strips to remaining edges to complete quilt top. Press seams toward outer border.

#### FINISH QUILT

**1** Layer quilt top, batting, and backing;  
— baste.

**2** Quilt as desired. Handi Quilter Studio Educator Kristina Whitney used the DL Friendship Star 1 design from Wasatch Quilting to machine-stitch the A block centers (**Quilting Diagram**). For the rest of the quilt top she chose curvy designs—continuous curves in the dark gray and red squares and stippling in the light gray squares—to balance out the straight-line piecing. Kristina used two layers of batting, a Hobbs 80/20 topped by 100% wool, and Sew Fine Silver 408 thread by Superior Threads for the quilting.

**3** Bind with black print  $2\frac{1}{2}\times 42$ " strips.

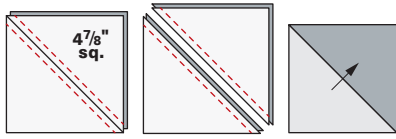


Diagram 1

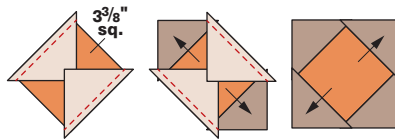
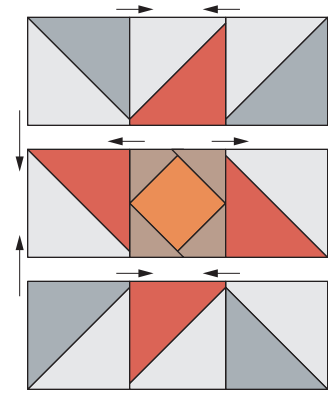


Diagram 2



Block A  
Diagram 3

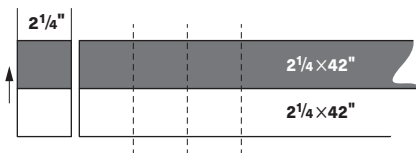


Diagram 4

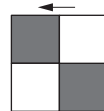
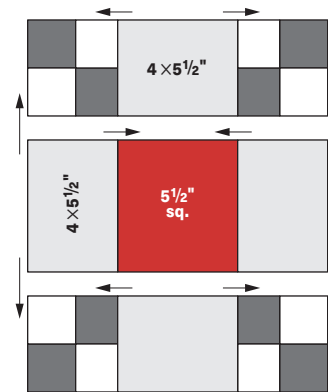
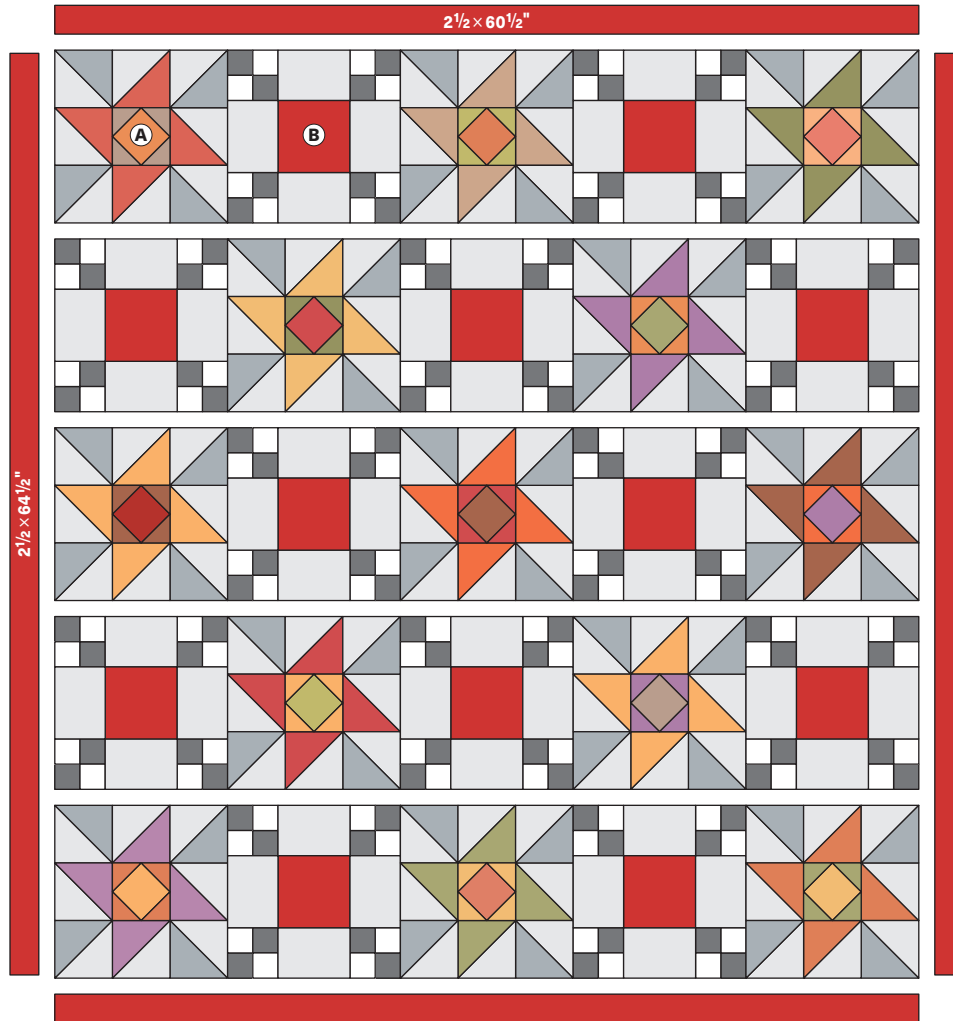


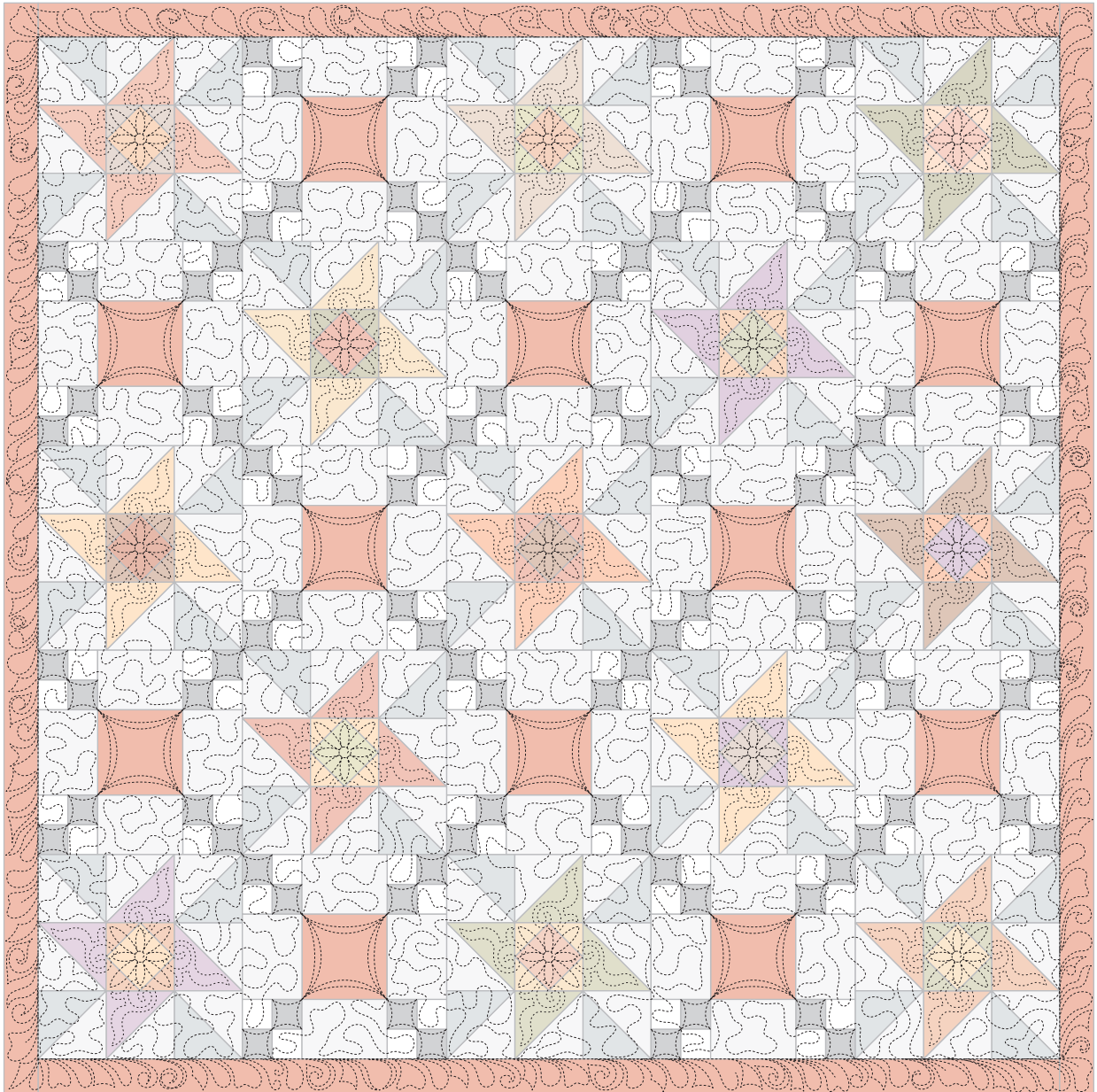
Diagram 5



Block B  
Diagram 6



Quilt Assembly Diagram



Quilting Diagram