

Seasonal Sampler: Present Block

This is a bonus 6" block version of the Present Block. Find all block patterns and details about this quilt at AllPeopleQuilt.com/SeasonalSampler.

FINISHED BLOCK: 6" square

MATERIALS

Yardages and cutting instructions are based on 42" of usable fabric width.

- 10" square *each* blue print and aqua print
- 5" square solid white

CUT FABRICS

Cut pieces in the following order.

From blue print, cut:

- 1-1×5" rectangle
- 2-1×3¼" rectangles
- 2-2" squares

From solid white, cut:

- 1-2×3½" rectangle
- 2-2" squares

From aqua print, cut:

- 4-2½×3¼" rectangles

ASSEMBLE BLOCK

Measurements include ¼" seam allowances. Sew with right sides together unless otherwise stated.

Press seams in directions indicated by arrows on diagrams. If no direction is specified, press seam toward darker fabric.

1 Use a pencil to mark a diagonal line on wrong side of each blue print 2" square.

2 Align a marked blue print 2" square with one end of a solid white 2×3½" rectangle (**Diagram 1**; note direction of marked line). Sew on marked line. Trim seam allowance to ¼". Press open attached triangle. Add a marked blue print 2" square to opposite end of rectangle to make a Flying Geese unit. The unit still should be 2×3½" including seam allowances.

3 Referring to **Diagram 2**, sew together two aqua print 2½×3¼" rectangles and one blue print 1×3¼" rectangle to make a present side unit. The unit should be 3¼×5" including seam allowances. Repeat to make a second present side unit.

4 Referring to **Diagram 3**, lay out two solid white 2" squares, Flying Geese unit, present side units, and blue print 1×5" rectangle in two rows. Sew together pieces in rows. Join rows to make a present block. The block should be 6½" square including seam allowances.

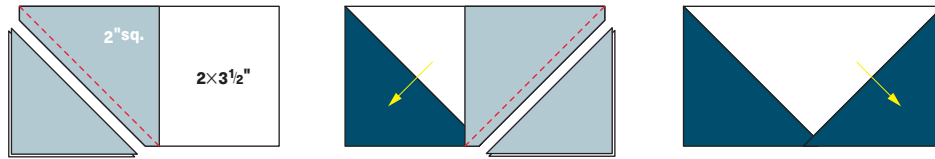


Diagram 1

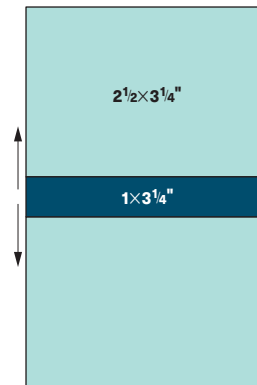


Diagram 2

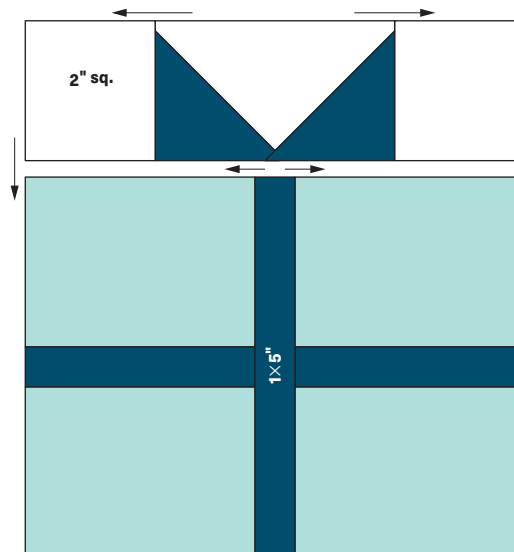


Diagram 3