

Blast from the Past Sampler: Block 26

From *Humble Pie* by designer Kim Diehl

American Patchwork & Quilting magazine April 2002

FINISHED BLOCK: 6" square

MATERIALS

Yardages and cutting instructions are based on 42" of usable fabric width.

- 2" square dark print No. 1
- 5" square light print No. 1
- 5" square medium print No. 1
- 5" square dark print No. 2
- 6" square light print No. 2
- 7" square medium print No. 2

CUT FABRICS

Cut pieces in the following order.

From dark print No. 1, cut:

- 1-1/2" square for position 1

From light print No. 1, cut:

- 1-1/2" x 2 1/2" rectangle for position 3
- 1-1/2" square for position 2

From medium print No. 1, cut:

- 1-1/2" x 3 1/2" rectangle for position 5
- 1-1/2" x 2 1/2" rectangle for position 4

From dark print No. 2, cut:

- 1-1/2" x 4 1/2" rectangle for position 7
- 1-1/2" x 3 1/2" rectangle for position 6

From light print No. 2, cut:

- 1-1/2" x 5 1/2" rectangle for position 9
- 1-1/2" x 4 1/2" rectangle for position 8

From medium print No. 2, cut:

- 1-1/2" x 6 1/2" rectangle for position 11
- 1-1/2" x 5 1/2" rectangle for position 10

ASSEMBLE BLOCK

Measurements include 1/4" seam allowances. Sew with right sides together unless otherwise stated.

Press seams in directions indicated by arrows on diagrams. If no direction is specified, press seam toward darker fabric.

1 Referring to **Diagram 1**, sew together dark print position 1 square and light print position 2 square. Referring to **Diagram 2**, add light print position 3 rectangle.

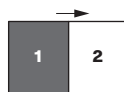


Diagram 1

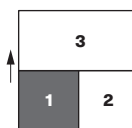


Diagram 2

2 Referring to **Diagram 3**, add remaining rectangles in numerical order to make block. Press seams toward newly added rectangles. The block should be 6 1/2" square including seam allowances.

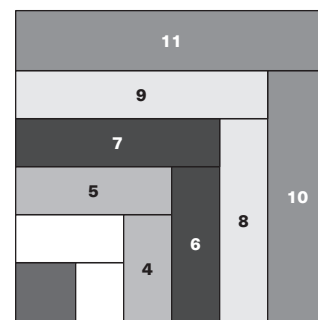
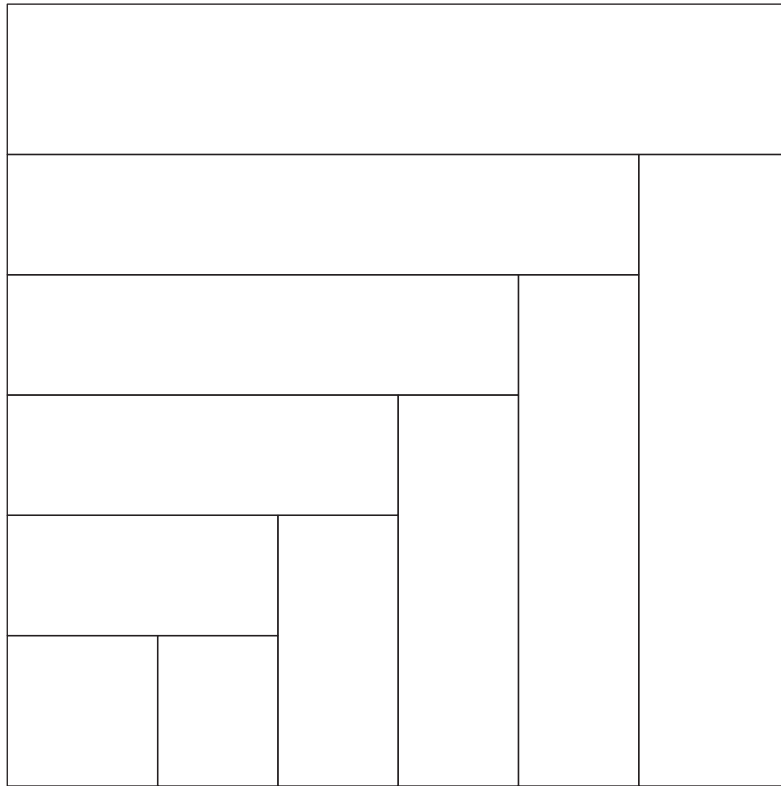
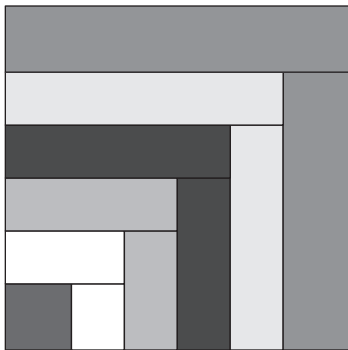


Diagram 3

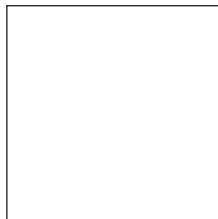




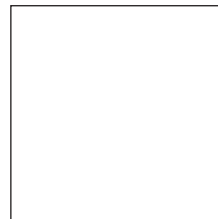
Coloring Diagram



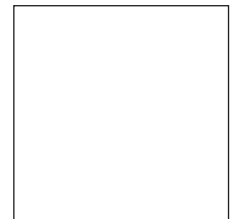
Use the Coloring Diagram, *top*, to plan your version of the original block, *above*. Audition fabric swatches using the squares, *right*.



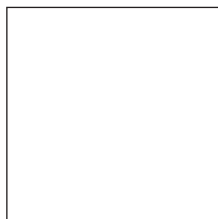
Swatch



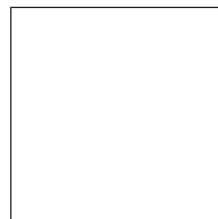
Swatch



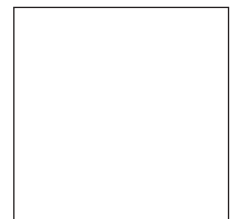
Swatch



Swatch



Swatch



Swatch